



# Whittington Way, Bishops Stortford

Beaumont Avenue South, Bishops Stortford, Herfordshire,  
CM23 4SH

A new development offering 2 bedroom houses

 ParadigmLiving

Prices  
from  
£138,250



£ Prices from £138,250(35% share)

% Share available 35%-75%

🛏 2 bedrooms



*Whittington Way is a brand new Development of homes located in the village of Thorley, situated close to Bishops Stortford town centre.*



## INSERT DEV NAME KEY FEATURES

Bathroom suite and  
thermostatic shower

Carpet throughout living areas

Vinyl flooring in kitchen,  
bathroom & downstairs toilet

Gas central heating

Allocated parking

Fitted kitchen with integrated  
oven and hob

Integrated washing machine and  
fridge freezer

These particulars do not constitute any part of an offer or contract. Any intended purchasers must satisfy themselves as to the correctness of each of the statements contained in these particulars. All floor layouts may be subject to changes. The dimensions given on the plan are subject to minor variations intended for guidance only and are not to be used for carpets, appliances or items of furniture.



## Two Bedroom House

Plots 226\*, 227, 228,  
229\*, 230

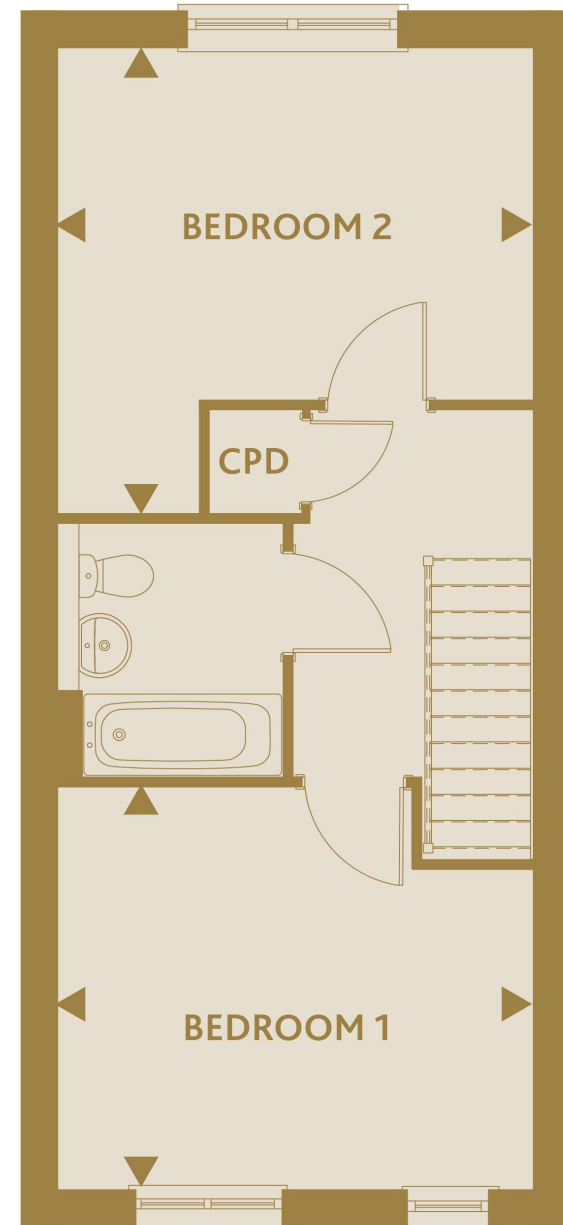
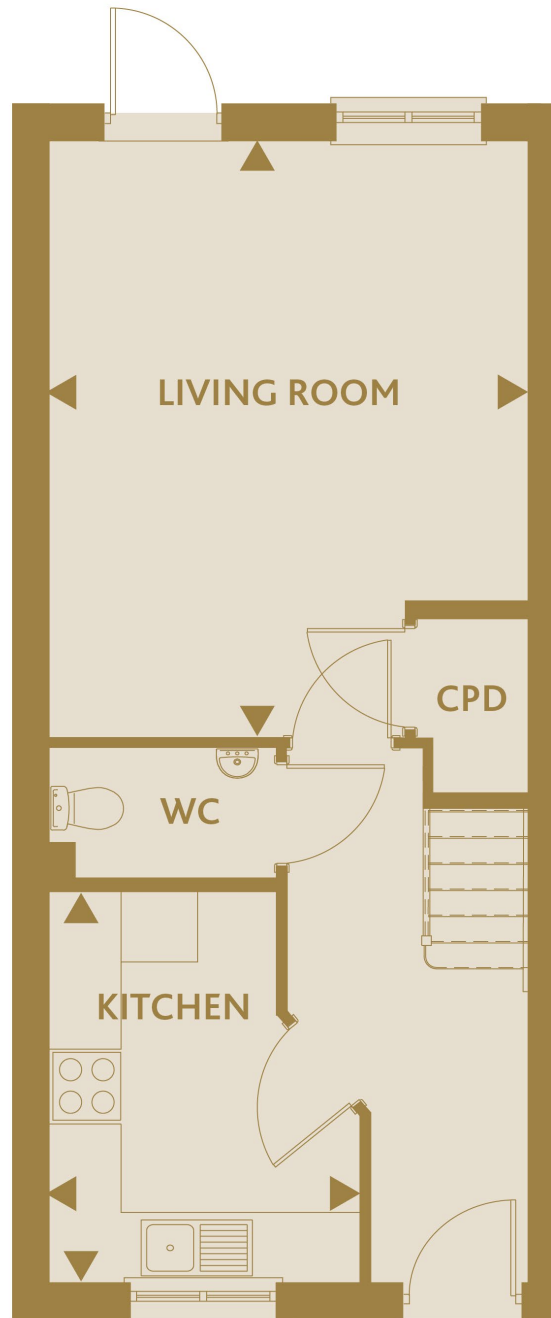
(\* handed)

**KITCHEN**  
8'9" x 11'2"     2.68m x 3.40m

**LIVING ROOM**  
13'5" x 16'11"     4.13m x 5.16m

**BEDROOM 1**  
13'5" x 11'5"     4.13m x 3.50m

**BEDROOM 2**  
13'5" x 13'2"     4.13m x 4.02m



These particulars do not constitute any part of an offer or contract. Any intended purchasers must satisfy themselves as to the correctness of each of the statements contained in these particulars. All floor layouts maybe subject to changes. The dimensions given on the plan are subject to minor variations intended for guidance only and are not be used for carpets, appliances or items of furniture.







# SITE PLAN



These particulars do not constitute any part of an offer or contract. Any intended purchasers must satisfy themselves as to the correctness of each of the statements contained in these particulars. All floor layouts may be subject to changes. The dimensions given on the plan are subject to minor variations intended for guidance only and are not to be used for carpets, appliances or items of furniture.

**////// ParadigmLiving**

**For more information**

**0300 303 8046**

**[www.paradigmliving.co.uk](http://www.paradigmliving.co.uk)**

These particulars do not constitute any part of an offer or contract. Any intended purchasers must satisfy themselves as to the correctness of each of the statements contained in these particulars. All floor layouts maybe subject to changes. The dimensions given on the plan are subject to minor variations intended for guidance only and are not be used for carpets, appliances or items of furniture.

