

Harrogate Road

The Stratton 3 bedroom home



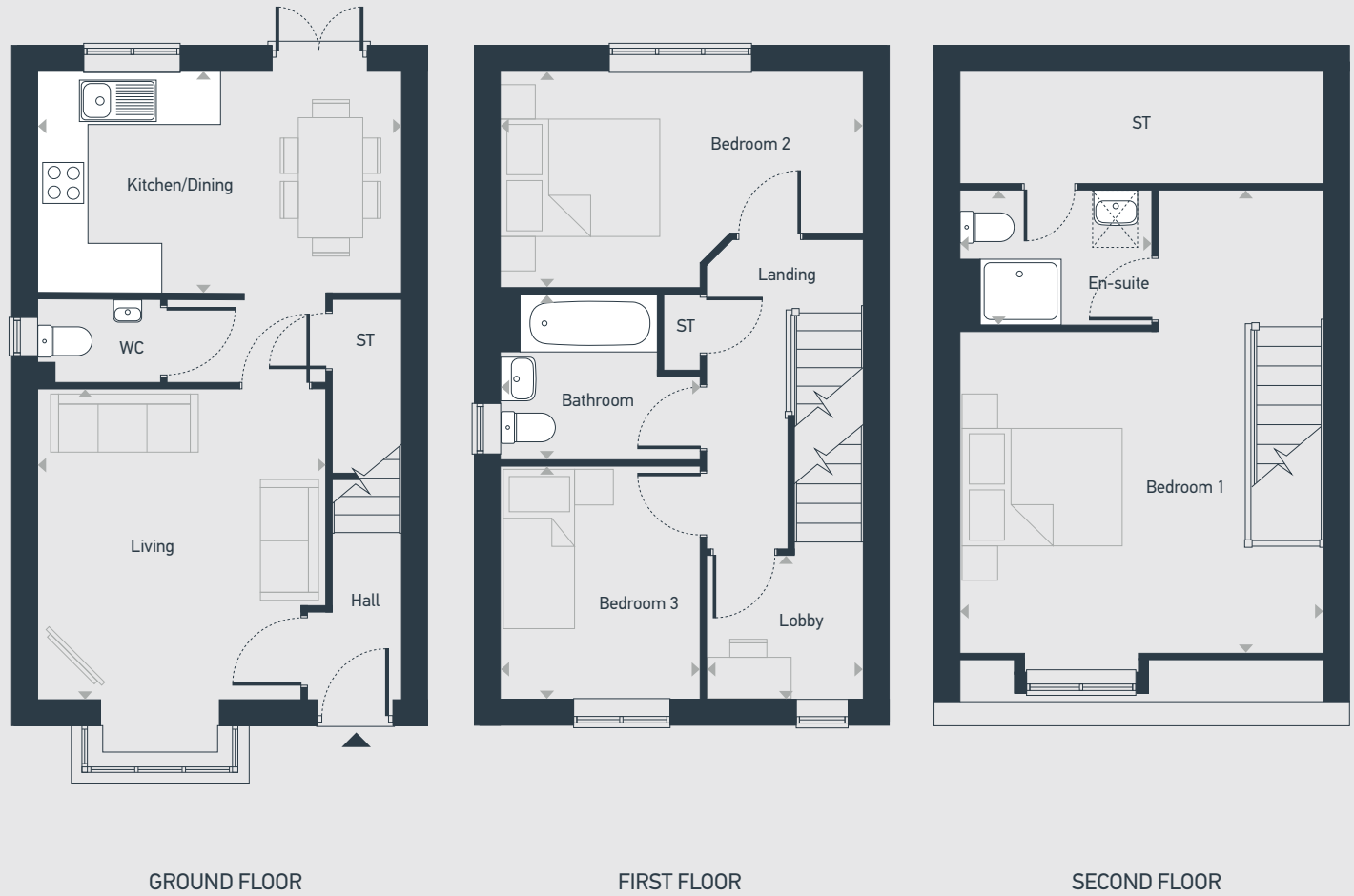
Harrogate Road

The Stratton 3 bedroom home

Plots as drawn: 178, 179, 180, 181, 241 and 242

98.66 sq.m / 1,062 sq.ft

Handed:



ST: Store WC: Water Closet ☒: Roof Light

DIMENSIONS	m	ft
Kitchen/Dining	4.49m x 2.74m	14'8" x 8'11"
Living	3.89m x 3.55m	12'9" x 11'7"

DIMENSIONS	m	ft
Bedroom 1	4.50m x 3.98m	14'9" x 13'0"
En-suite	2.37m x 1.66m	7'9" x 5'5"
Bedroom 2	4.50m x 2.67m	14'9" x 8'9"
Bedroom 3	2.88m x 2.47m	9'5" x 8'1"
Bathroom	2.47m x 2.03m	8'1" x 6'8"
Lobby	1.94m x 1.78m	6'4" x 5'9"



01274 531233 | centralandnorthsales@placesforpeople.co.uk | placesforpeople.co.uk/vision
Market Square, Shipley BD18 3QB

Please note: All layouts and floor plans, configurations, maps and information are intended for guidance only and accuracy of this information cannot be relied upon by prospective purchasers who must make their own enquiries to satisfy themselves by inspection or otherwise as to the correct detail.