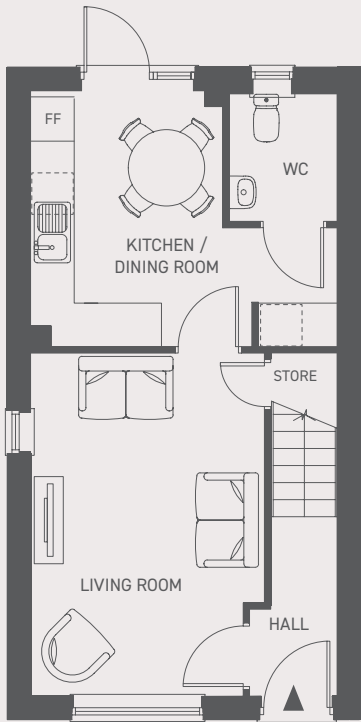


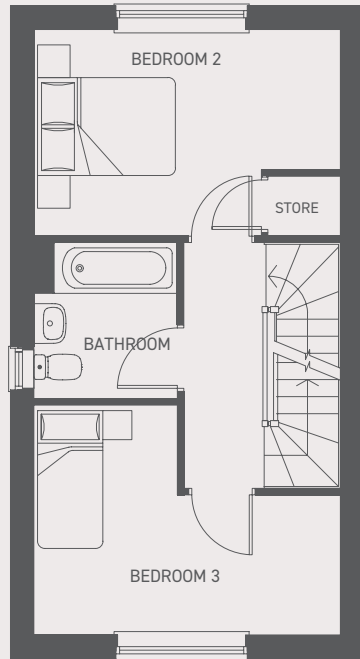
HOUSE / THE PARHAM

THREE BEDROOM HOUSE

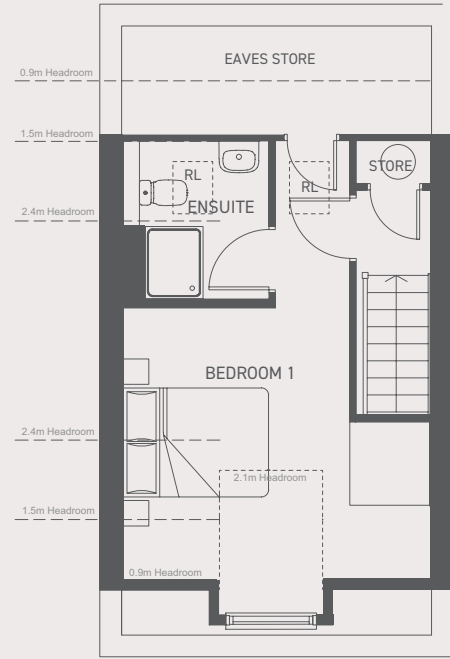
PLOTS: 53, 54, 78, 79, 80 & 81



GROUND FLOOR



1ST FLOOR



2ND FLOOR

LIVING ROOM	3.64 M X 2.67 M	11'9" X 8'8"
KITCHEN/DINING	4.69 M X 3.26 M	15'4" X 10'7"
BEDROOM 1	3.91 M X 3.13 M	12'8" X 10'3"
BEDROOM 2	4.27 M X 3.16 M	14'0" X 10'4"
BEDROOM 3	4.27 M X 2.88 M	14'0" X 9'4"
TOTAL AREA	94 M SQ.M.	1,014 SQ.FT.

KEY
FF - FRIDGE/FREEZER



Floorplans shown are for illustrative purposes and approximate measurements only. Exact layouts and sizes may vary. All measurements may vary within a tolerance of 5%. The dimensions are not intended to be used for carpet sizes, appliance sizes or items of furniture.