

# DESIRABLE LOCATION

## BEAULIEU PARK, CHELMSFORD

One-bedroom and two-bedroom apartments available for Shared Ownership in Chelmsford.

**35% shares available from £80,500 for a one bedroom apartment and £108,500 for a two bedroom apartment\***

**A selection of newly built one and two bedroom apartments available for Shared Ownership at Beaulieu Park, Chelmsford. Offering a convenient location, as well as excellent facilities on site and locally.**

Beaulieu Park is located on the north eastern edge of Chelmsford and offers something for everyone, including:

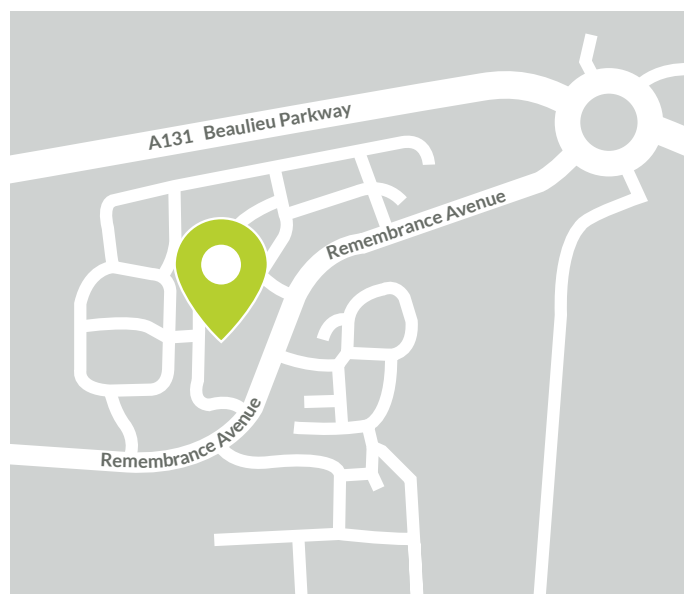
- Amenities on your doorstep. At Beaulieu Square you will find a Sainsbury's local, coffee shop and more
- A brand new onsite mainline train station with a targeted opening date of the end of 2025
- Acres of parkland, meadows, sports areas and allotments
- A range of new and existing onsite schools ranging from nursery to high school
- An established community with an onsite community centre
- Great transport links via the A130 and the A12

This, coupled with excellent local amenities, make Beaulieu Park the ideal setting for your new home.

### Property features include:

- Fully fitted kitchen with integrated appliances
- Flooring throughout
- Neutral décor
- Open plan living
- Double glazing
- Gas central heating
- Allocated parking with EV charging point
- New build warranty
- Fibre to the premises
- Private balcony

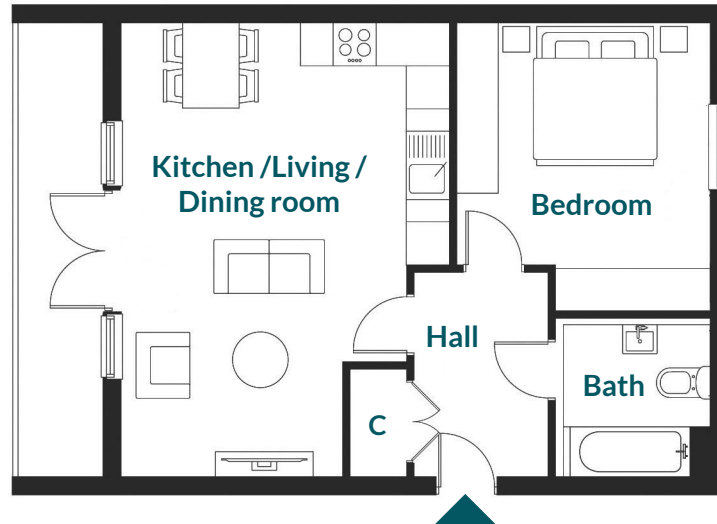
Property Location: **CM1 6HA / CM1 6LD**



\*Share percentage stated refers to purchasing a 35% share of a one-bedroom apartment with a full market of £230,000 and a 35% share of a two-bedroom apartment with a full market value of £310,000. Shared Ownership eligibility and affordability criteria apply. Minimum (35%) and maximum (75%) share values apply, and rent is payable on the unsold share. Please speak to a member of our Sales Team for more details. Images are indicative and for illustrative purposes only. Prices are subject to change.

# ONE BEDROOM APARTMENT

Plots 6 & 9 53.2 m<sup>2</sup> | £235,000

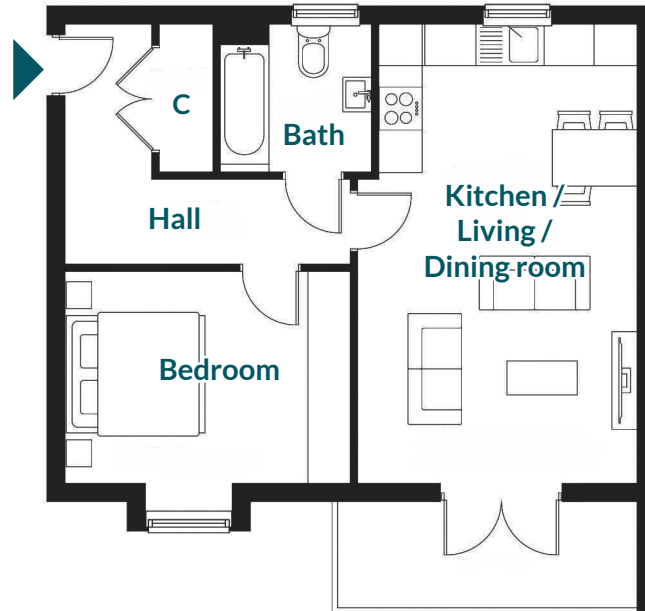


## C - Cupboard

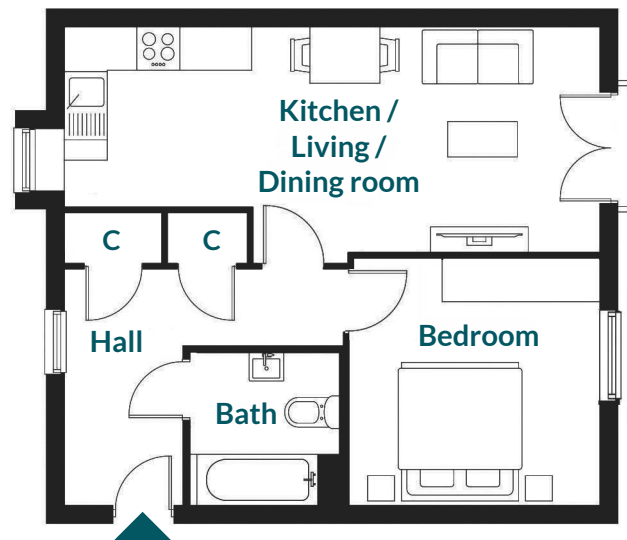
We wish to inform prospective purchasers that we have prepared these particulars as a general guide. We have not carried out a detailed survey nor tested the services, appliances and fittings. Room sizes should not be relied upon for carpets and furnishings.

# ONE BEDROOM APARTMENT

Plot 10 56.2 m<sup>2</sup> | £235,000



Plot 14 50.3 m<sup>2</sup> | £230,000

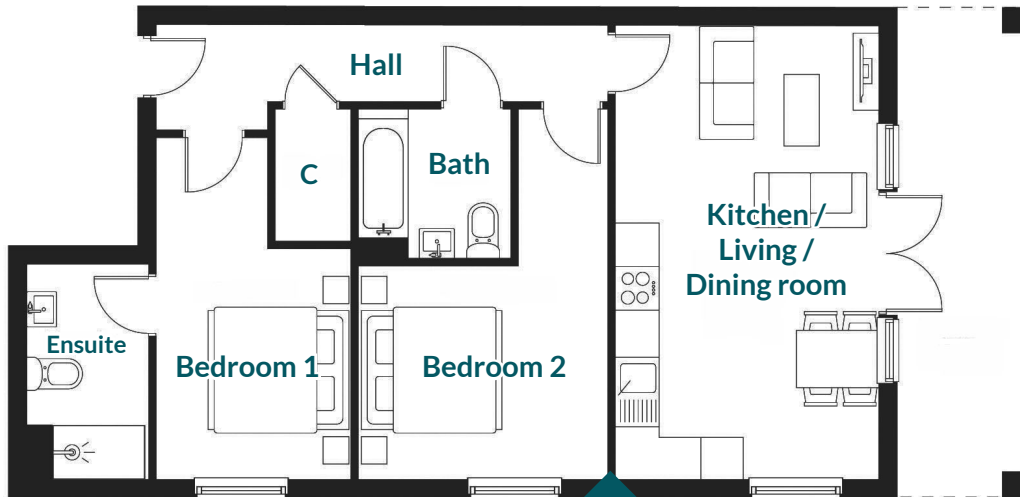


C - Cupboard

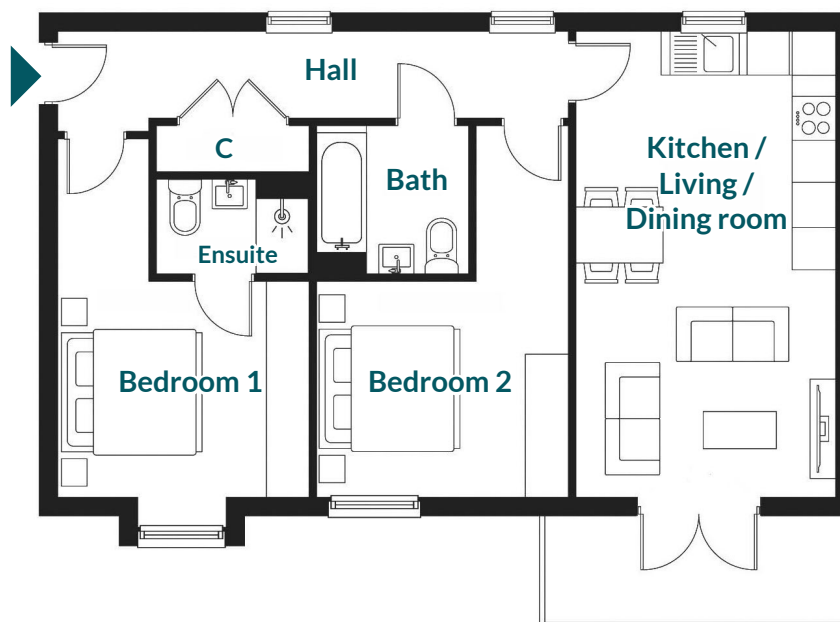
We wish to inform prospective purchasers that we have prepared these particulars as a general guide. We have not carried out a detailed survey nor tested the services, appliances and fittings. Room sizes should not be relied upon for carpets and furnishings.

# TWO BEDROOM APARTMENT

Plots 12, 15 & 17 70.6 m<sup>2</sup> | £320,000



Plots 139, 140 & 141 70.7 m<sup>2</sup> | £310,000

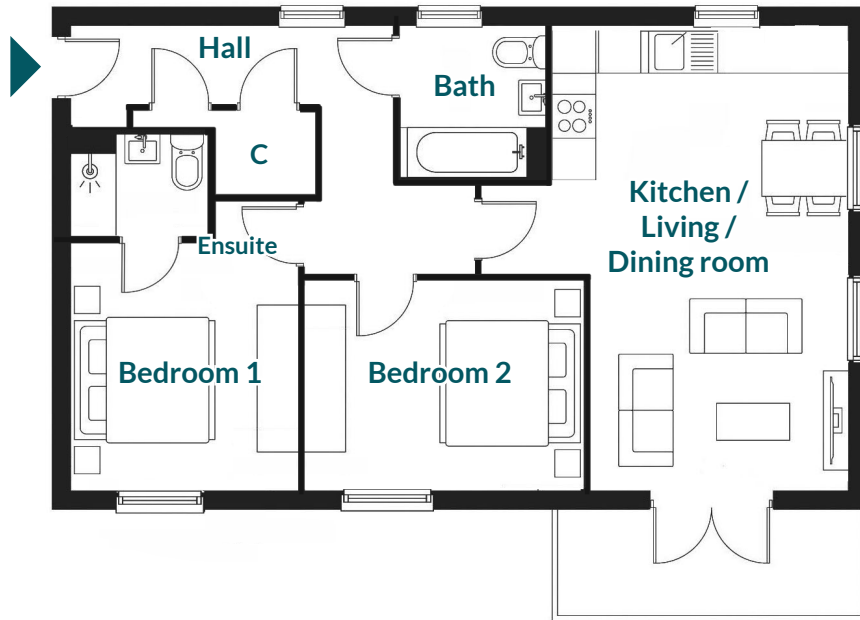


C - Cupboard

We wish to inform prospective purchasers that we have prepared these particulars as a general guide. We have not carried out a detailed survey nor tested the services, appliances and fittings. Room sizes should not be relied upon for carpets and furnishings.

# TWO BEDROOM APARTMENT

Plots 144,146 & 148 70.7 m<sup>2</sup> | £310,000

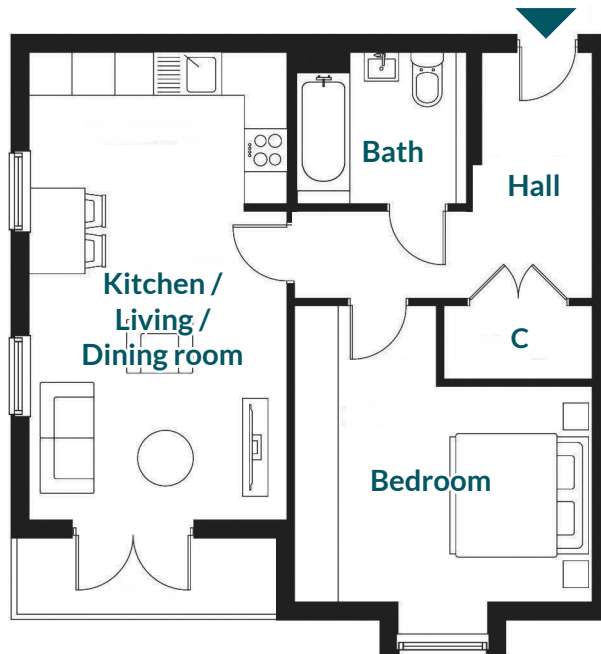


## C - Cupboard

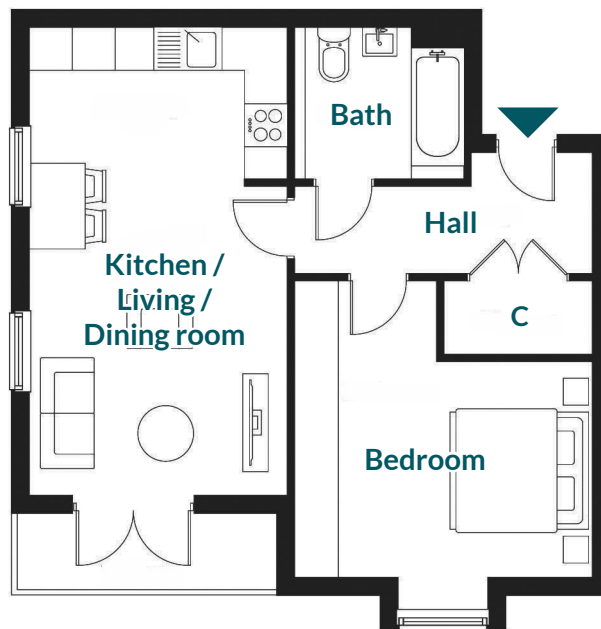
We wish to inform prospective purchasers that we have prepared these particulars as a general guide. We have not carried out a detailed survey nor tested the services, appliances and fittings. Room sizes should not be relied upon for carpets and furnishings.

# ONE BEDROOM APARTMENT

Plot 142 55.5 m<sup>2</sup> | £230,000



Plot 145 & 147 52.3 m<sup>2</sup> | £230,000



C - Cupboard

We wish to inform prospective purchasers that we have prepared these particulars as a general guide. We have not carried out a detailed survey nor tested the services, appliances and fittings. Room sizes should not be relied upon for carpets and furnishings.