



ROMAN FIELDS

Tiber Way, Banbury, Oxfordshire, OX16 1LP

Julius Place, Banbury, Oxfordshire, OX16 1JZ

Magnus Crescent, Banbury, Oxfordshire, OX16 1LQ

A brand-new development of 2- & 3-bedroom houses

Available through Shared Ownership

//// ParadigmLiving



£ Prices from **£115,500 (35% share)**

% Share available **35%-75%**

🛏 **2- & 3-bedroom houses**



Paradigm are pleased to offer these 2- & 3-bedroom houses, located in the historic market town of Banbury.

Roman Fields has excellent transport links, local amenities and number of schools close to the development.



ROMAN FIELDS KEY FEATURES

Bathroom suite and thermostatic shower

Carpet throughout living areas

Amtico flooring in kitchen, bathroom, downstairs toilet & en-suite (if applicable)

Gas central heating

2 allocated parking spaces

Fitted kitchen with integrated oven and hob

Integrated washing machine & fridge freezer

Integrated dishwasher (3 beds only)

These particulars do not constitute any part of an offer or contract. Any intended purchasers must satisfy themselves as to the correctness of each of the statements contained in these particulars. All floor layouts maybe subject to changes. The dimensions given on the plan are subject to minor variations intended for guidance only and are not be used for carpets, appliances or items of furniture.



2 Bedroom House

Plots 204* & 209*

(* handed)

KITCHEN/DINING

10'9" x 15'8" 3.29m x 4.79m

LIVING ROOM

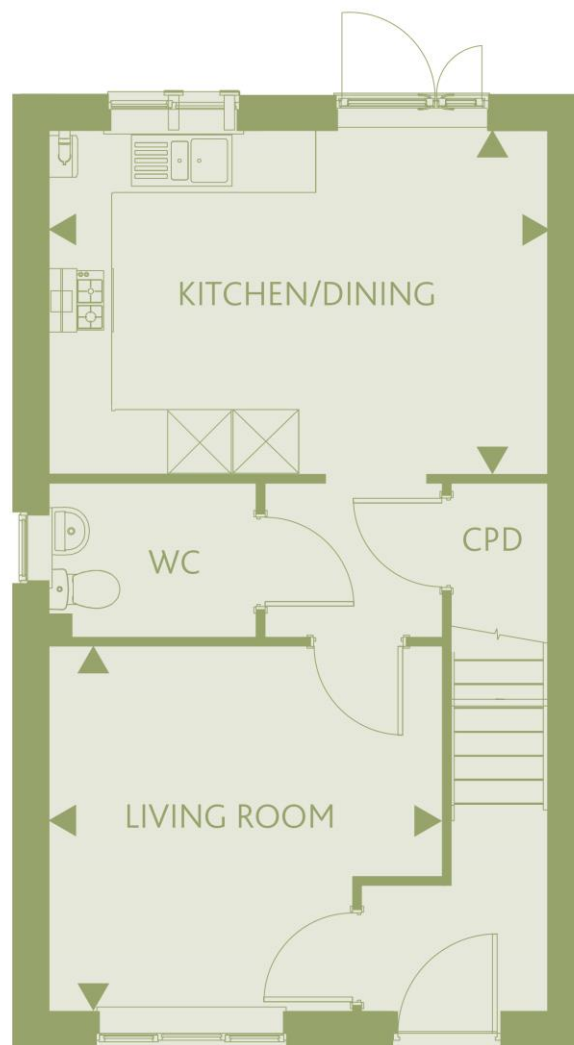
11'5" x 12'3" 3.49m x 3.75m

BEDROOM 1

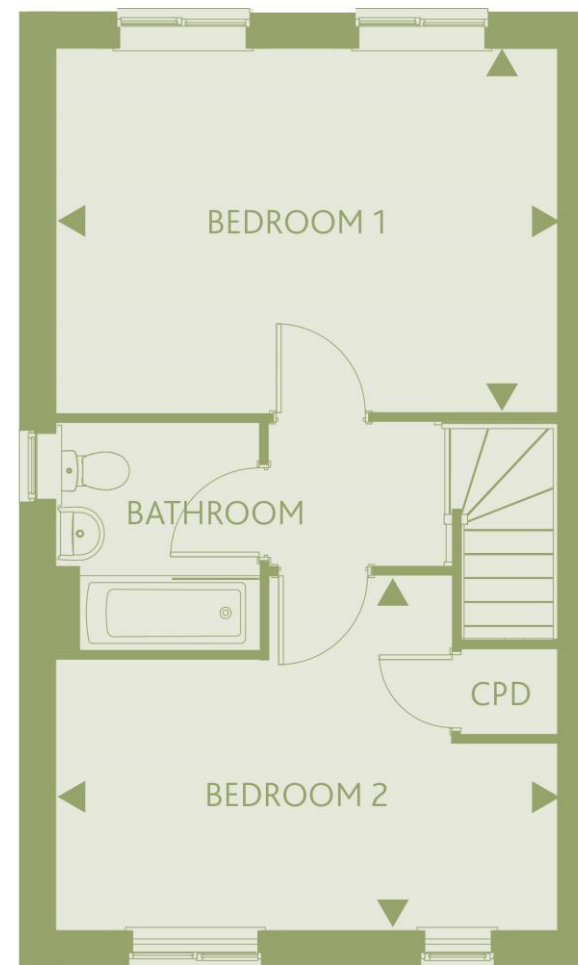
11'5" x 15'8" 3.48m x 4.79m

BEDROOM 2

8'5" x 15'8" 2.59m x 4.79m



GROUND FLOOR



FIRST FLOOR

These particulars do not constitute any part of an offer or contract. Any intended purchasers must satisfy themselves as to the correctness of each of the statements contained in these particulars. All floor layouts may be subject to changes. The dimensions given on the plan are subject to minor variations intended for guidance only and are not to be used for carpets, appliances or items of furniture.





2 Bedroom House

Plots 37*, 38*, 39 & 40
(* handed)

KITCHEN/DINING

10'9" x 15'8" 3.28m x 4.79m

LIVING ROOM

12'1" x 12'3" 3.70m x 3.75m

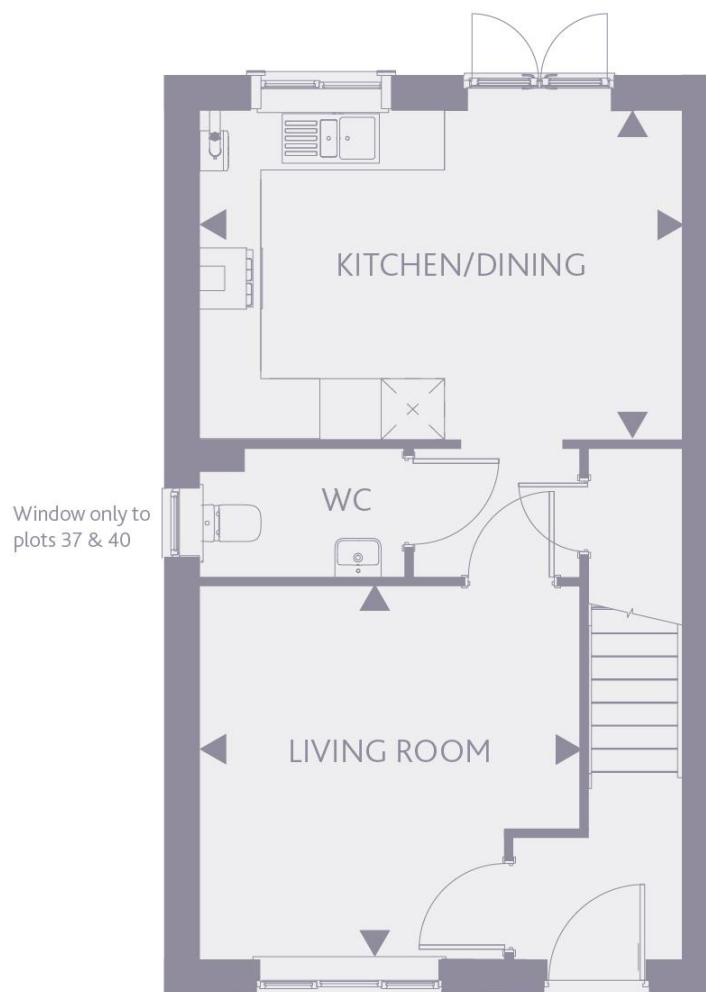
BEDROOM 1

11'10" x 15'8" 3.63m x 4.79m

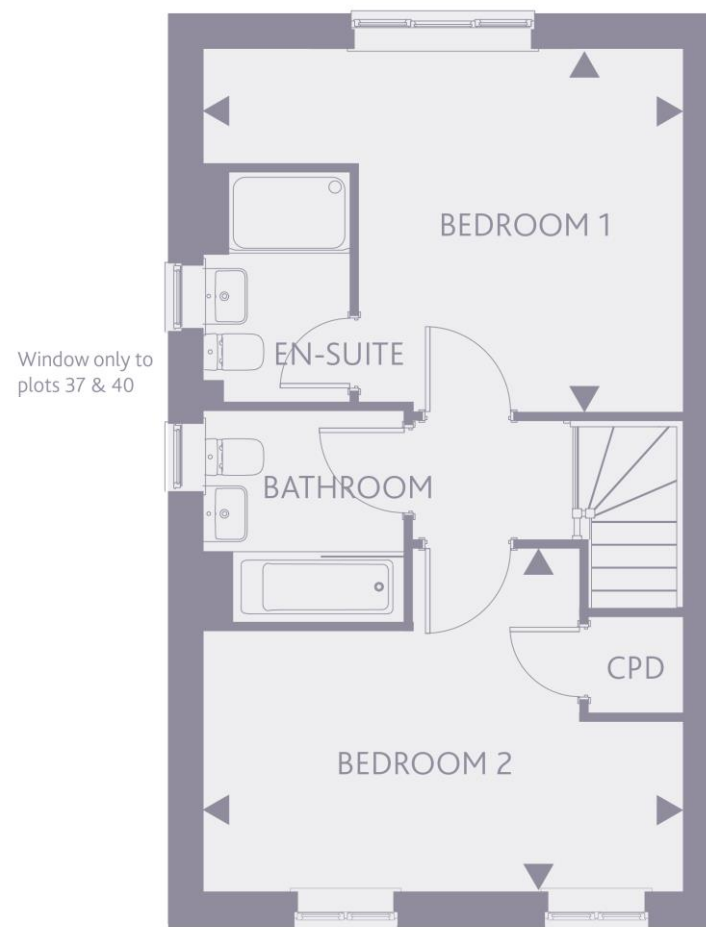
BEDROOM 2

11'3" x 15'8" 3.43m x 4.79m

These particulars do not constitute any part of an offer or contract. Any intended purchasers must satisfy themselves as to the correctness of each of the statements contained in these particulars. All floor layouts may be subject to changes. The dimensions given on the plan are subject to minor variations intended for guidance only and are not to be used for carpets, appliances or items of furniture.



GROUND FLOOR



FIRST FLOOR





3 Bedroom House

Plot 193

KITCHEN/DINING

18'6" x 8'11" 5.64m x 2.74m

LIVING ROOM

18'6" x 10'4" 5.64m x 3.16m

BEDROOM 1

11'3" x 10'6" 3.45m x 3.21m

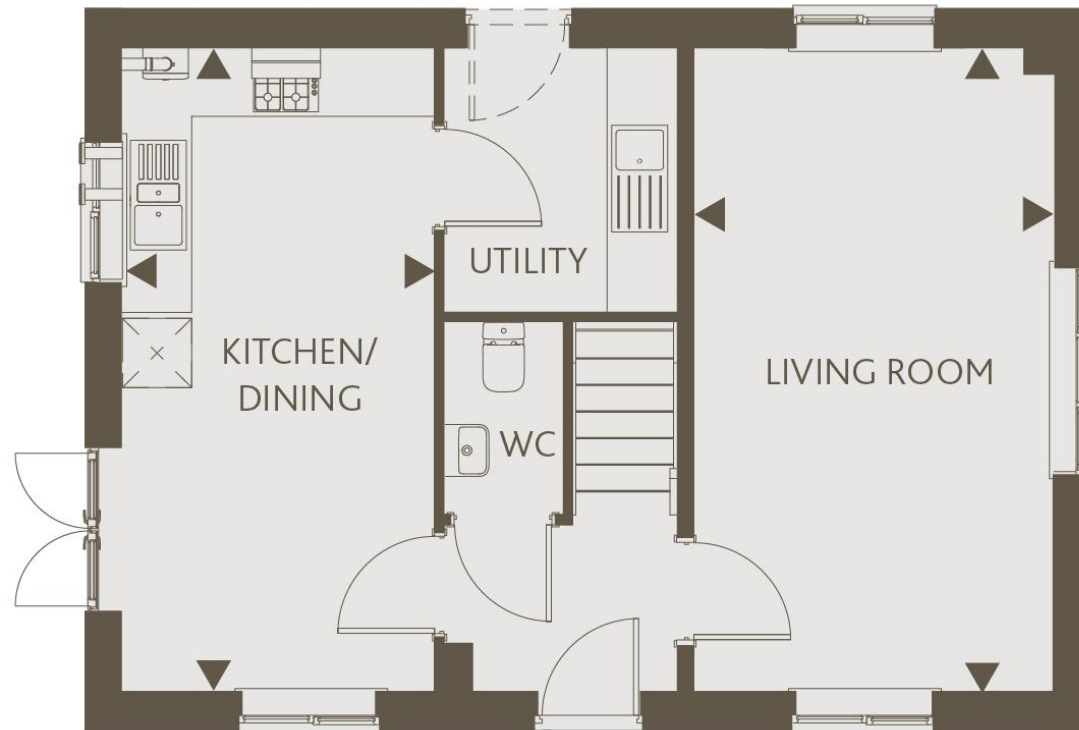
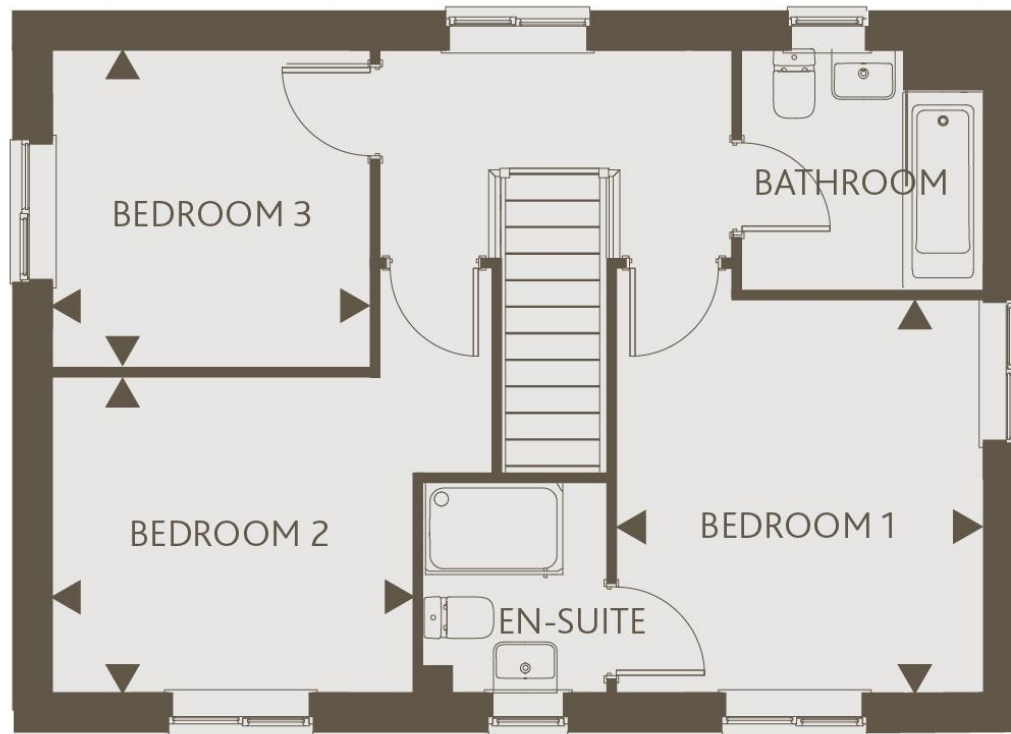
BEDROOM 2

9'1" x 10'4" 2.78m x 3.17m

BEDROOM 3

9'1" x 9'1" 2.79m x 2.79m

These particulars do not constitute any part of an offer or contract. Any intended purchasers must satisfy themselves as to the correctness of each of the statements contained in these particulars. All floor layouts may be subject to changes. The dimensions given on the plan are subject to minor variations intended for guidance only and are not be used for carpets, appliances or items of furniture.





3 Bedroom House

Plots 49*, 50, 51 & 205*
(* handed)

KITCHEN/DINING

12'0" x 17'2" 3.67m x 5.24m

LIVING ROOM

12'1" x 14'0" 3.70m x 4.27m

BEDROOM 1

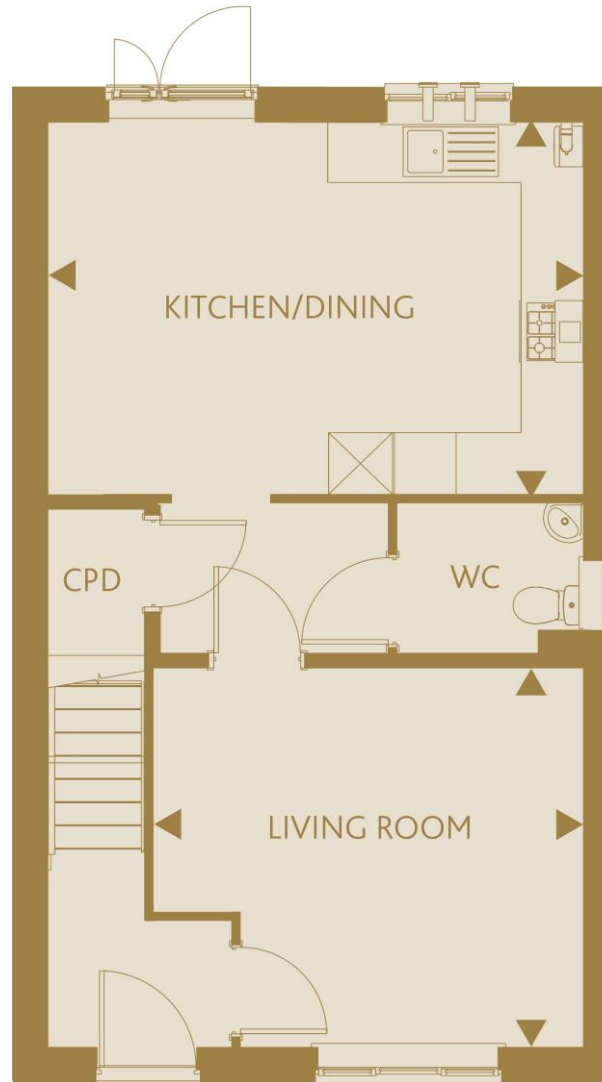
13'8" x 9'9" 4.19m x 2.99m

BEDROOM 2

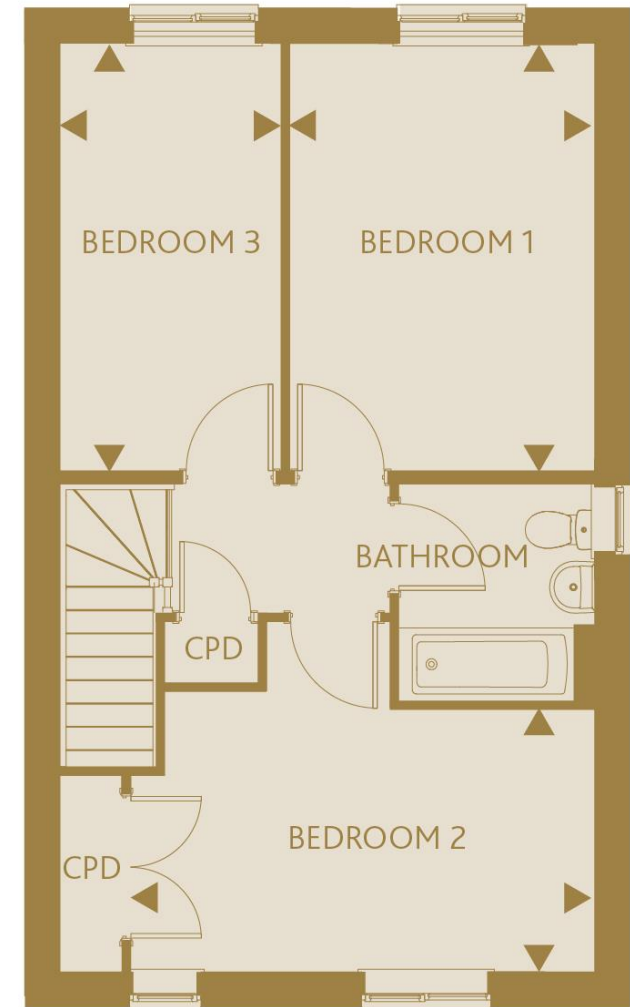
8'5" x 14'10" 2.59m x 4.53m

BEDROOM 3

13'8" x 7'1" 4.19m x 2.18m



GROUND FLOOR



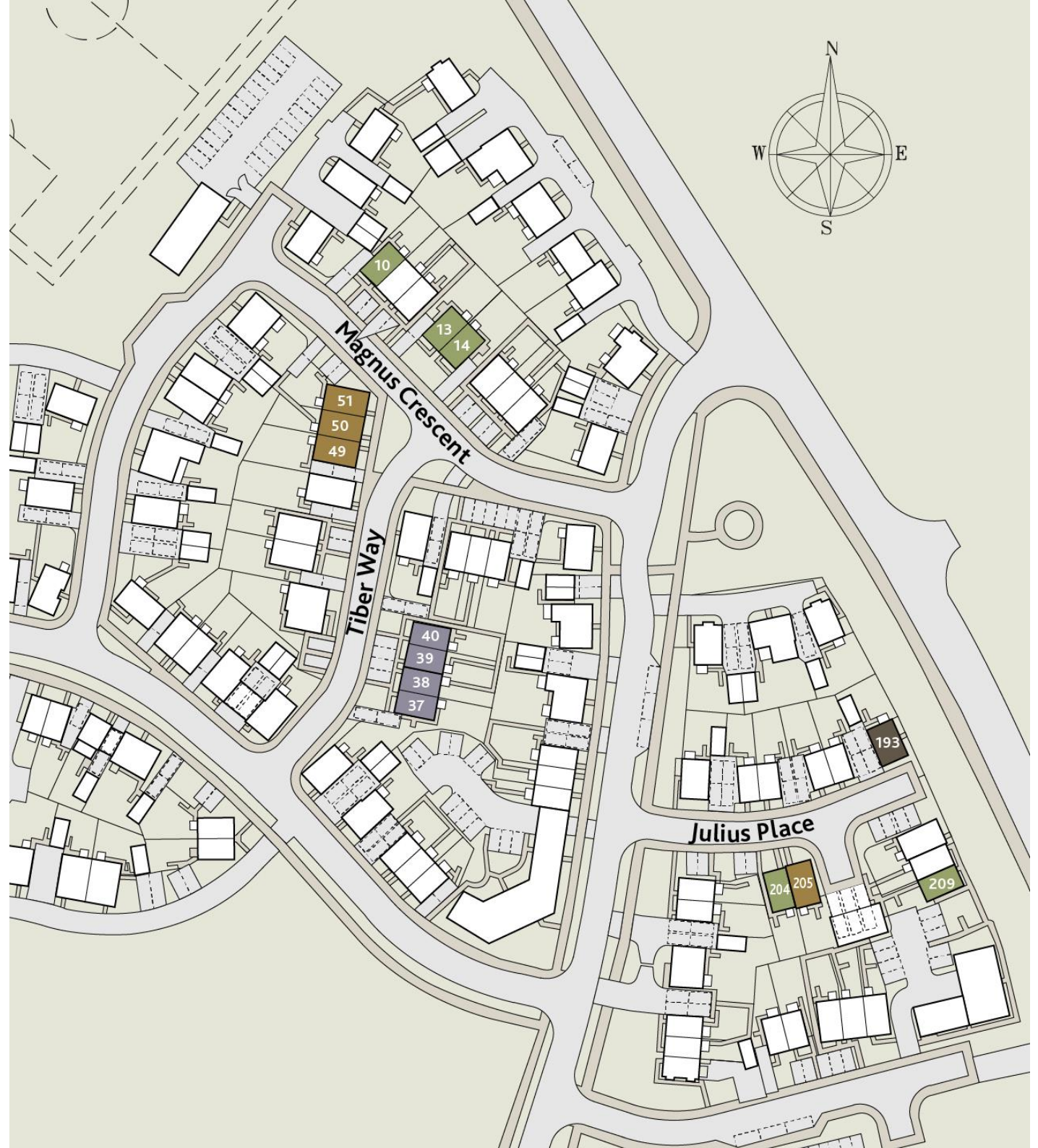
FIRST FLOOR

These particulars do not constitute any part of an offer or contract. Any intended purchasers must satisfy themselves as to the correctness of each of the statements contained in these particulars. All floor layouts may be subject to changes. The dimensions given on the plan are subject to minor variations intended for guidance only and are not to be used for carpets, appliances or items of furniture.





SITE PLAN



These particulars do not constitute any part of an offer or contract. Any intended purchasers must satisfy themselves as to the correctness of each of the statements contained in these particulars. All floor layouts may be subject to changes. The dimensions given on the plan are subject to minor variations intended for guidance only and are not to be used for carpets, appliances or items of furniture.



For more information

0300 303 8046

www.paradigmliving.co.uk

These particulars do not constitute any part of an offer or contract. Any intended purchasers must satisfy themselves as to the correctness of each of the statements contained in these particulars. All floor layouts maybe subject to changes. The dimensions given on the plan are subject to minor variations intended for guidance only and are not be used for carpets, appliances or items of furniture.

