



TYPE 17

2 BEDROOM APARTMENTS



Floor	Plot No.
1	85
2	92
3	99
4	105
5	111

KITCHEN/LIVING/

DINING AREA 5.90m x 4.60m 19'4" x 15'1"

BEDROOM 1 4.00m x 3.30m 13'1" x 10'10"

BEDROOM 2 4.00m x 3.00m 13'1" x 9'10"

TOTAL AREA 72.6 sq. m. 781.45 sq. ft.

Floorplan Key

D – Dishwasher
FF – Fridge Freezer
HWC – Hot Water Cylinder
---- Wardrobe shown for indicative purpose

1st floor



2nd floor



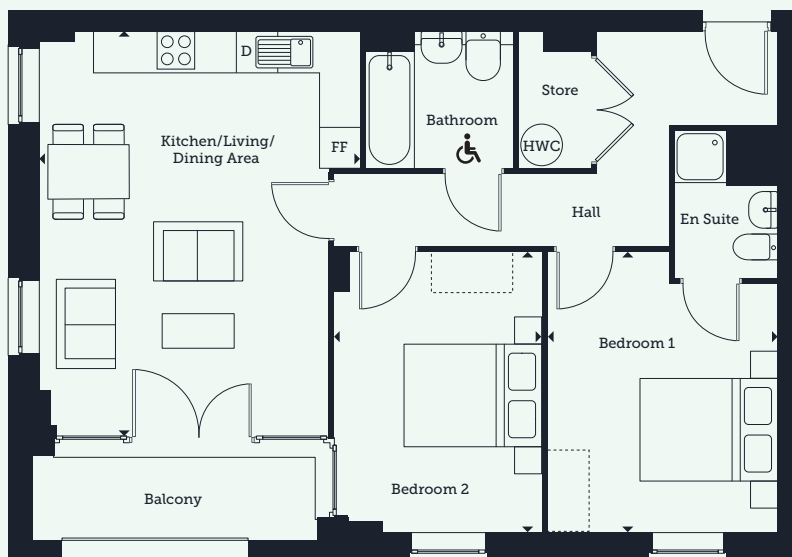
3rd floor



4th floor



5th floor



Guinness Homes is part of The Guinness Partnership Ltd. Registered office is at 30 Brock Street, Regent's Place, London, NW1 3FG.

These particulars do not constitute any part of an offer or contract. Any intending purchaser must satisfy themselves by inspection as to the correctness of each of the statements contained in these particulars. Computer generated images are for illustration purposes only. Features such as windows, brick and other materials may vary. Dimensions and floorplans are designed to give you a general indication of the layout and should never be used for curtains, carpets, furniture or appliance spaces. Landscaping is shown for illustrative purposes only. Plans are indicative only. Guinness Homes and The Guinness Partnership support the development of mixed tenure communities and are proud to provide homes for Shared Ownership and affordable rent. The tenure of these homes may change subject to demand. Details correct at time of going to print. October 2023.