

The Hawthorn

The Woodlands at Halsnead Garden Village



Four-bedroom home, sleeps seven

4 |

2 |

1 |



Artist's impression

Key features

- Three double bedrooms
- Downstairs W.C.
- En-suite to master bedroom
- Open plan kitchen and dining room
- Separate living room
- Driveway parking

Lickers Lane, Whiston, L35 3PW

A stunning collection of 158 beautifully designed new homes



The Hawthorn

Available plots

Shared ownership

43, 44, 94, 95, 95,
97, 108, 109, 121,
122, 171, 172, 173,
177, 178, 224, 225

Rent to Buy

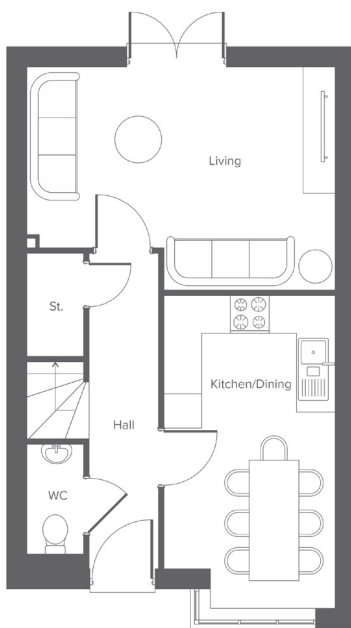
99, 101, 102, 174,
175, 176

The Hawthorn

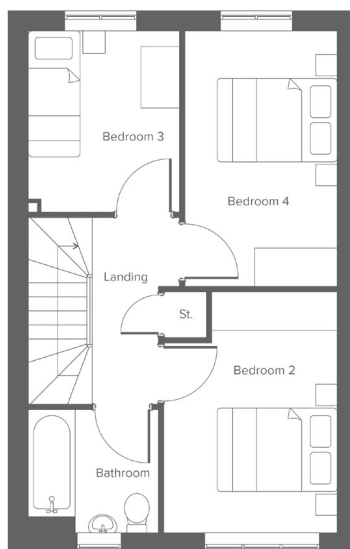
The Woodlands at Halsnead Garden Village

Four-bedroom home, sleeps seven

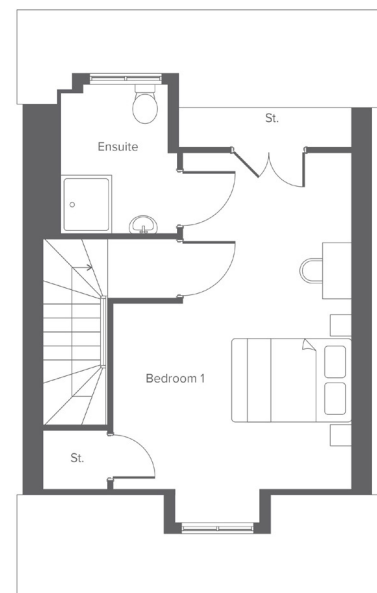
Ground floor



First floor



Second floor



Room	Metric	Imperial
Kitchen/Dining	2.73 x 5.00	8'11" x 16'4"
Living	4.92 x 3.56	16'1" x 11'8"
W.C.	0.93 x 1.99	3'0" x 6'6"

Room	Metric	Imperial
Bedroom 2	2.77 x 3.86	9'1" x 12'7"
Bedroom 3	2.41 x 2.89	7'10" x 9'5"
Bedroom 4	2.44 x 4.07	8'0" x 13'4"
Bathroom	2.07 x 1.98	6'9" x 6'5"

Room	Metric	Imperial
Bedroom 1	3.80 x 5.37	12'5" x 17'7"
En-suite	2.16 x 2.37	7'1" x 7'9"

Total size **111.89m² / 1,204.4 ft²**

Get in touch

 0151 808 1768

 [yourhousinggroup.co.uk](https://www.yourhousinggroup.co.uk)

 @yourhousing

 yourhousinggroup