

The Petworth Charnock Grove



3-bedroom home, sleeps 5

3 | 

2 | 

1 | 



Artist's impression

Key features

- Two double bedrooms
- Downstairs W.C.
- En-suite to master bedroom
- Open plan kitchen and dining room
- Separate living room
- Driveway parking



The Petworth

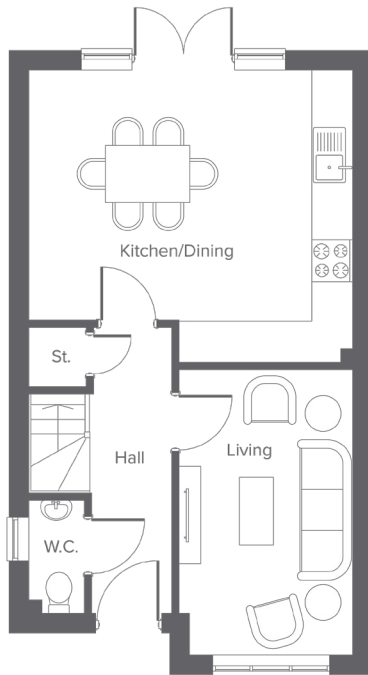
Available plots

5, 6, 45, 46, 51, 52, 53,
54, 55, 56, 57 or 58

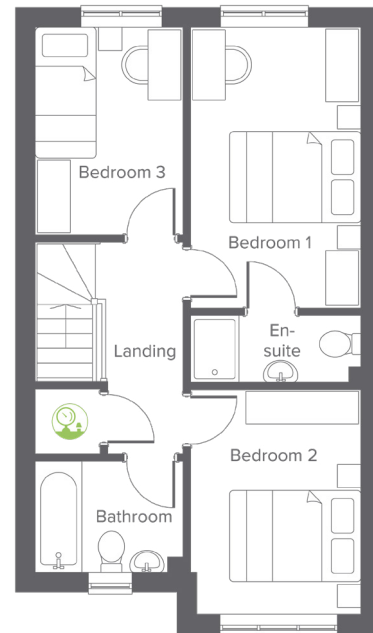
Charter Lane, Charnock Richard, PR7 5LZ
A collection of 76 beautifully designed new homes

The Petworth Charnock Grove

3-bedroom home, sleeps 5



Ground floor

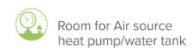


First floor

Ground Floor	Metric	Imperial
Kitchen/Dining	4.98 x 4.49	16'4" x 14'8"
Living	2.68 x 4.40	8'9" x 14'5"
W.C.	0.93 x 1.73	3'0" x 5'8"

First Floor	Metric	Imperial
Bedroom 1	2.61 x 4.22	8'6" x 14'6"
Bedroom 2	2.61 x 3.46	8'6" x 11'4"
Bedroom 3	2.26 x 3.18	7'4" x 10'5"
Bathroom	2.26 x 1.70	7'4" x 5'6"
En-suite	2.61 x 1.00	8'6" x 3'3"

Total size **88.3m² / 950ft²**



Get in touch

 01257 650614

 [yourhousinggroup.co.uk](https://www.yourhousinggroup.co.uk)

 @yourhousing

 yourhousinggroup