

# The Arundel+ Charnock Grove

4-bedroom home, sleeps 7



4 | 

2 | 

1 | 



Artist's impression

## Key features

- Set over three storeys
- Three double bedrooms
- En-suite to master bedroom
- Downstairs W.C.
- Open plan kitchen and dining room
- Separate study/dressing room
- Driveway parking

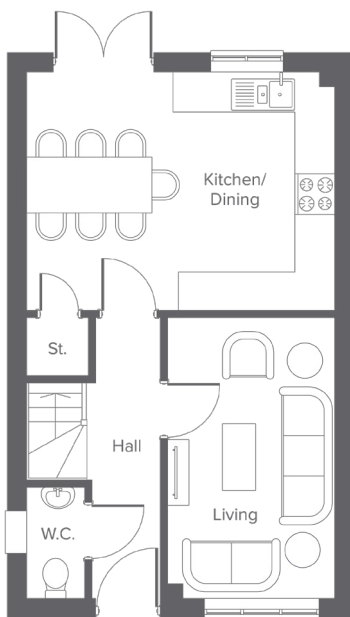


**The Arundel+**  
Available plots  
7, 8, 9 or 10

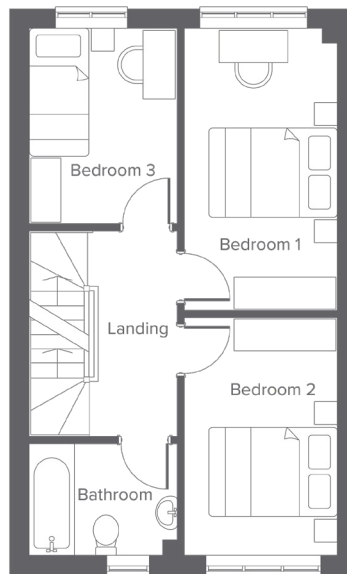
**Charter Lane, Charnock Richard, PR7 5LZ**  
A collection of 76 beautifully designed new homes

# The Arundel+ Charnock Grove

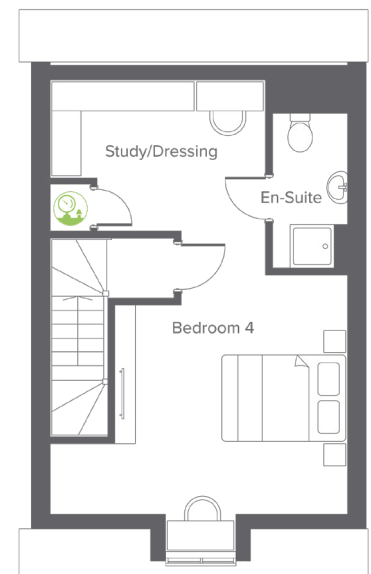
4-bedroom home, sleeps 7



**Ground floor**



**First floor**

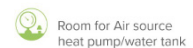


**Second floor**

Ground Floor	Metric	Imperial
Kitchen/Dining	4.82 x 3.73	15'9" x 12'2"
Living	2.61 x 4.40	8'6" x 14'5"
W.C.	0.91 x 1.74	2'11" x 5'8"

First Floor	Metric	Imperial
Bedroom 1	2.39 x 4.42	7'10" x 14'6"
Bedroom 2	2.39 x 3.71	7'10" x 12'2"
Bedroom 3	2.32 x 3.05	7'7" x 10'0"
Bathroom	2.32 x 1.74	7'7" x 5'8"

Second Floor	Metric	Imperial
Bedroom 4	4.82 x 3.89	15'9" x 12'9"
Study / Dressing	3.49 x 2.53	11'5" x 8'3"
En-suite	1.21 x 2.51	3'11" x 8'2"



Total size **112.5m<sup>2</sup> / 1,212ft<sup>2</sup>**

## Get in touch

 01257 650614

 [yourhousinggroup.co.uk](https://www.yourhousinggroup.co.uk)

 @yourhousing

 yourhousinggroup