

# Gresley Way Stevenage

WEAVERS CLOSE, ASTON END, STEVENAGE, HERTFORDSHIRE  
ROBINS HILL ROAD, ASTON END, STEVENAGE, HERTFORDSHIRE

A brand-new development of 3 & 4 bed houses

available through Shared Ownership

 ParadigmLiving

Prices  
from  
£120,000





£ Prices from **£120,000 (25% share)**

% Share available **25%-75%**

🛏 **3 & 4 bed houses**



Paradigm are pleased to present 7 new build homes available to purchase through the Shared Ownership Scheme. The properties consist of 3 & 4-bedroom set on the edge of one of Hertfordshire's up & coming towns. Stevenage has a plenty of amenities as well as excellent transport links to London by road & rail. The A1 trunk road is just minutes away for travel into London in under an hour-and-a-half and direct services from Stevenage railway station to London King's Cross, plus a good range of schools nearby too.



Disclaimer: Please note that, due to varying stages of construction, photographs may be of similar properties and are intended to give an idea of the finish of the properties being built.

## KEY FEATURES

White bathroom suite with thermostatic shower & heated towel rail

Carpet throughout living areas

Vinyl flooring in kitchen, bathroom & downstairs toilet

Air Source Heat Pumps

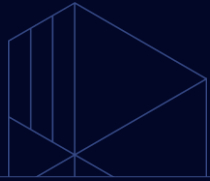
Allocated parking

Fitted kitchen with integrated electric oven and hob

Freestanding washer/ dryer and fridge freezer for Plots 10-13

Integrated washer/ dryer and fridge freezer for Plots 47-49

These particulars do not constitute any part of an offer or contract. Any intended purchasers must satisfy themselves as to the correctness of each of the statements contained in these particulars. All floor layouts may be subject to changes. The dimensions given on the plan are subject to minor variations intended for guidance only and are not to be used for carpets, appliances or items of furniture.



## 3 Bedroom House

Plots 10\* & 13

(\* handed)

### KITCHEN

10'11" x 16'3" 3.33m x 4.97m

### LIVING ROOM

13'5" x 12'10" 4.10m x 3.93m

### BEDROOM 1

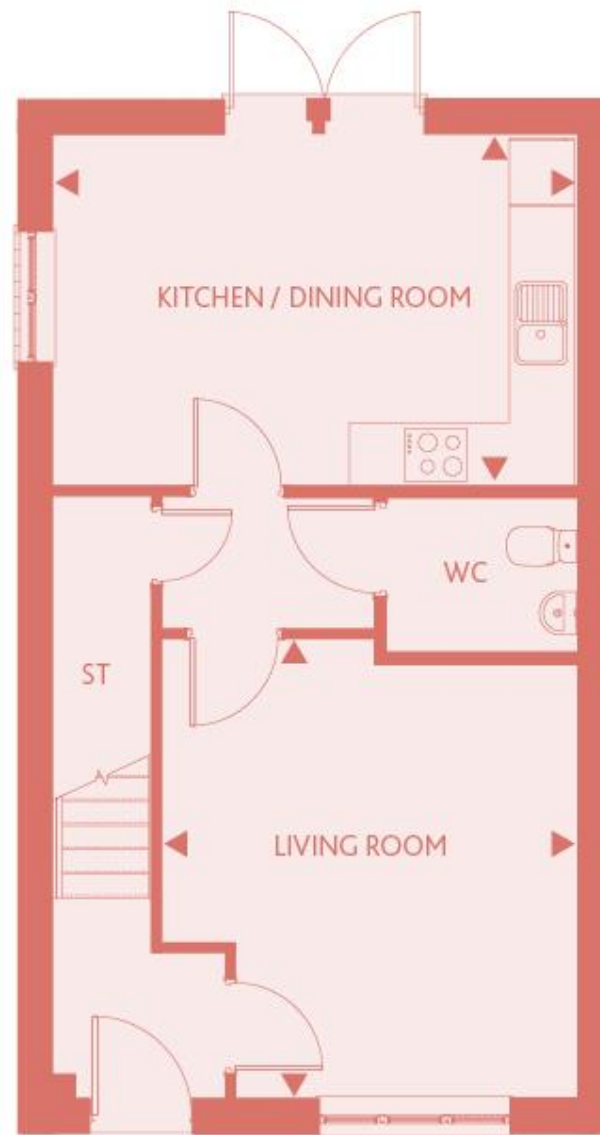
15'1" x 9'1" 4.60m x 2.78m

### BEDROOM 2

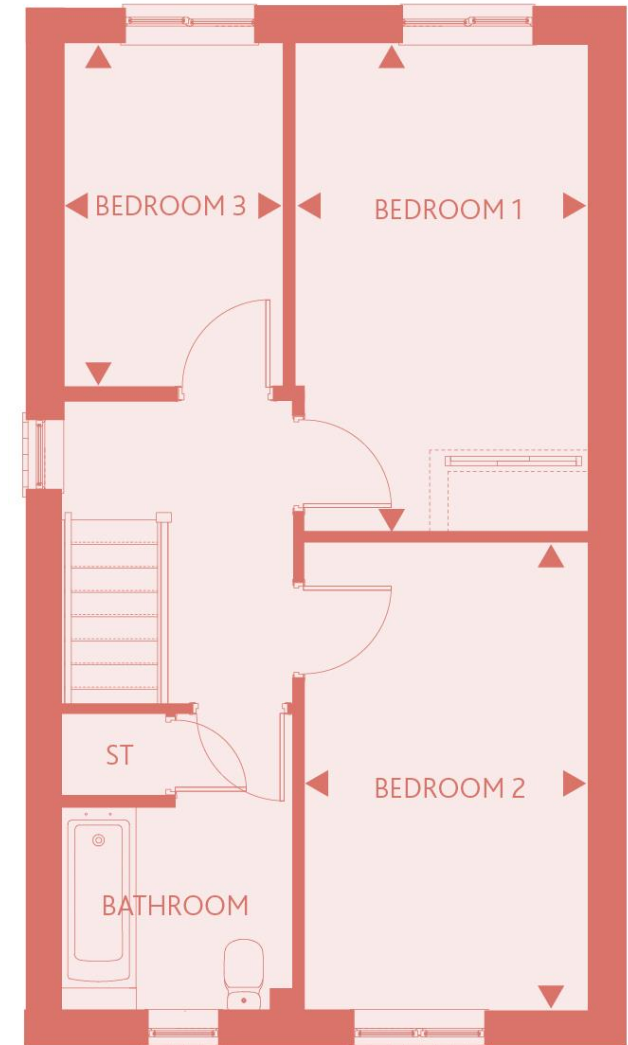
14'5" x 8'10" 4.41m x 2.70m

### BEDROOM 3

10'8" x 6'11" 3.26m x 2.12m



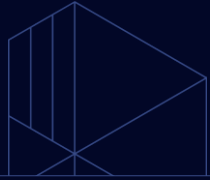
GROUND FLOOR



FIRST FLOOR

These particulars do not constitute any part of an offer or contract. Any intended purchasers must satisfy themselves as to the correctness of each of the statements contained in these particulars. All floor layouts may be subject to changes. The dimensions given on the plan are subject to minor variations intended for guidance only and are not to be used for carpets, appliances or items of furniture.





## 3 Bedroom House

Plots 11\* & 12

(\* handed)

### KITCHEN

10'11" x 16'3" 3.33m x 4.97m

### LIVING ROOM

13'5" x 12'10" 4.10m x 3.93m

### BEDROOM 1

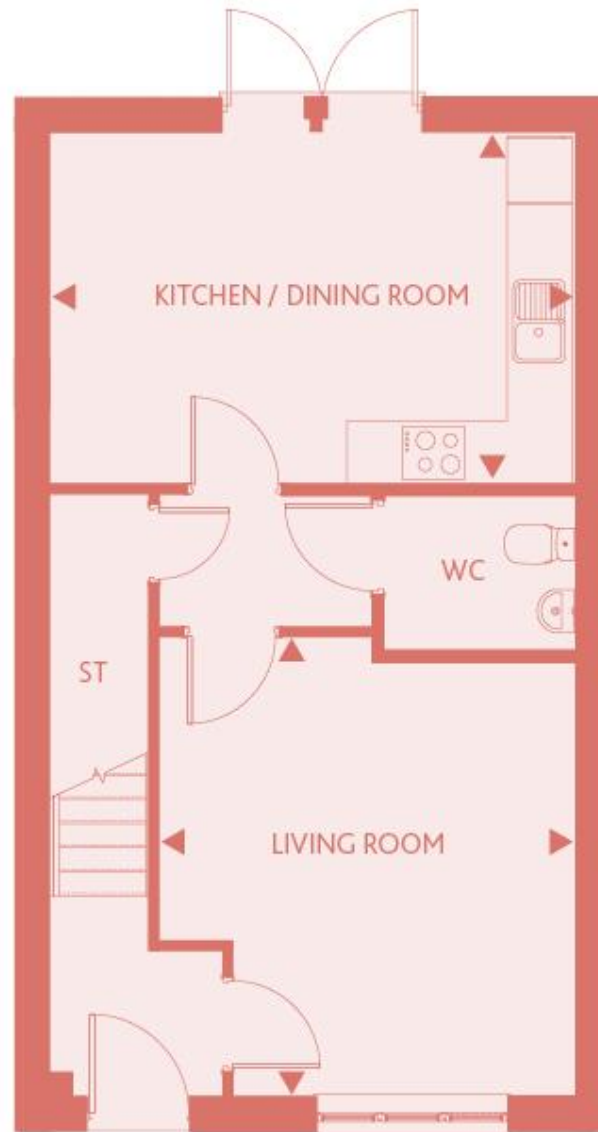
15'1" x 9'1" 4.60m x 2.78m

### BEDROOM 2

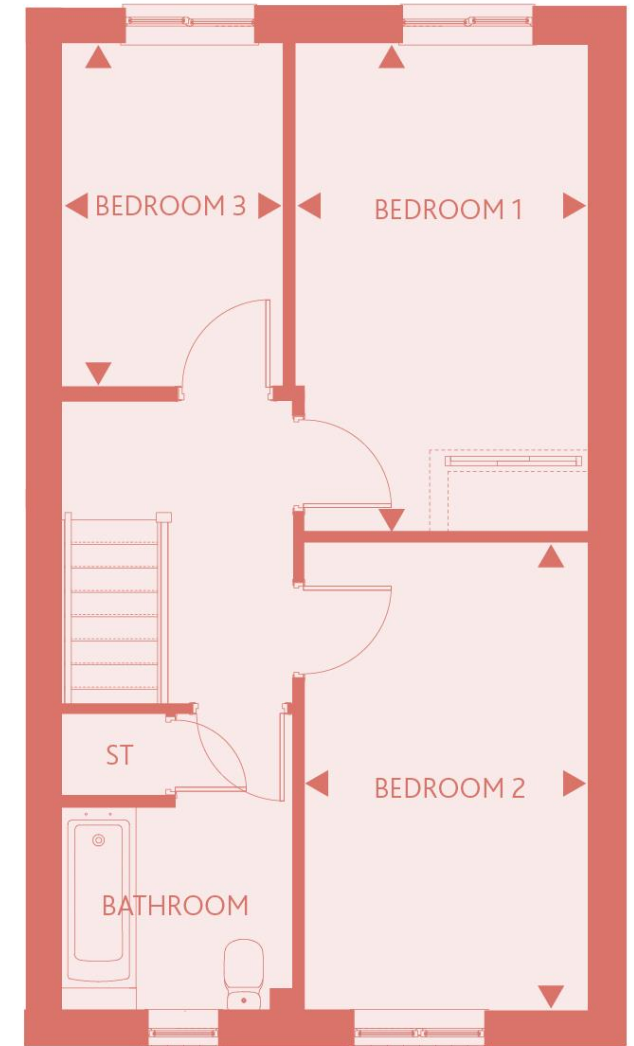
14'5" x 8'10" 4.41m x 2.70m

### BEDROOM 3

10'8" x 6'11" 3.26m x 2.12m



GROUND FLOOR



FIRST FLOOR

These particulars do not constitute any part of an offer or contract. Any intended purchasers must satisfy themselves as to the correctness of each of the statements contained in these particulars. All floor layouts may be subject to changes. The dimensions given on the plan are subject to minor variations intended for guidance only and are not to be used for carpets, appliances or items of furniture.





## 4 Bedroom House Plots 47 & 49\* (\* handed)

### KITCHEN/DINING

9'7" x 18'0" 2.94m x 5.51m

### LIVING ROOM

13'6" x 11'7" 4.12m x 3.55m

### BEDROOM 1

10'7" x 10'8" 3.25m x 3.26m

### BEDROOM 2

10'4" x 10'8" 3.15m x 3.26m

### BEDROOM 3

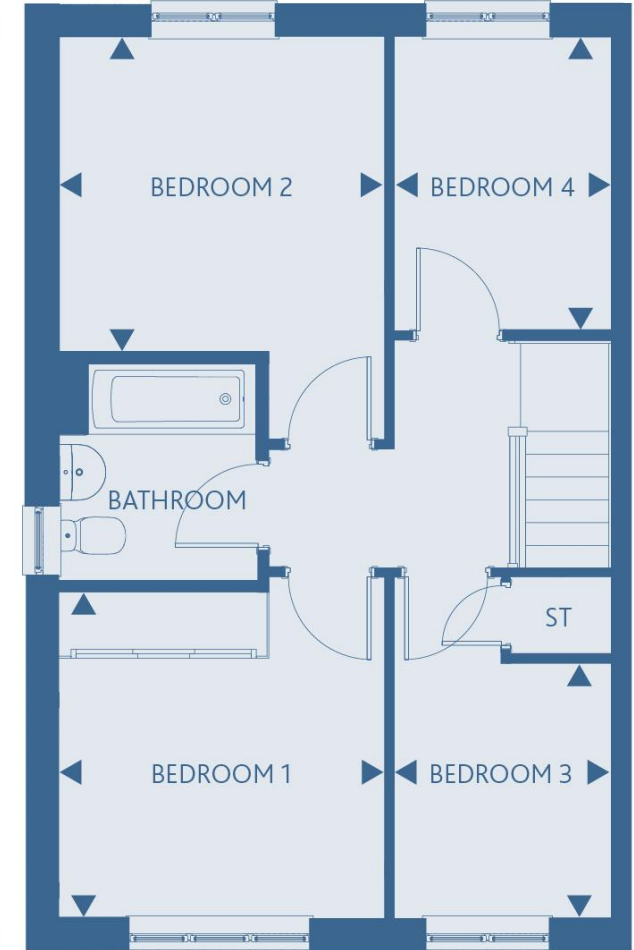
8'4" x 7'1" 2.55m x 2.18m

### BEDROOM 4

9'7" x 7'1" 2.94m x 2.18m



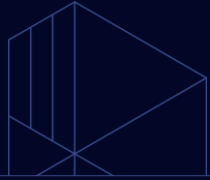
GROUND FLOOR



FIRST FLOOR

These particulars do not constitute any part of an offer or contract. Any intended purchasers must satisfy themselves as to the correctness of each of the statements contained in these particulars. All floor layouts may be subject to changes. The dimensions given on the plan are subject to minor variations intended for guidance only and are not to be used for carpets, appliances or items of furniture.





## 4 Bedroom House Plot 48

### KITCHEN/DINING

9'7" x 18'0" 2.94m x 5.51m

### LIVING ROOM

13'6" x 11'7" 4.12m x 3.55m

### BEDROOM 1

10'7" x 10'8" 3.25m x 3.26m

### BEDROOM 2

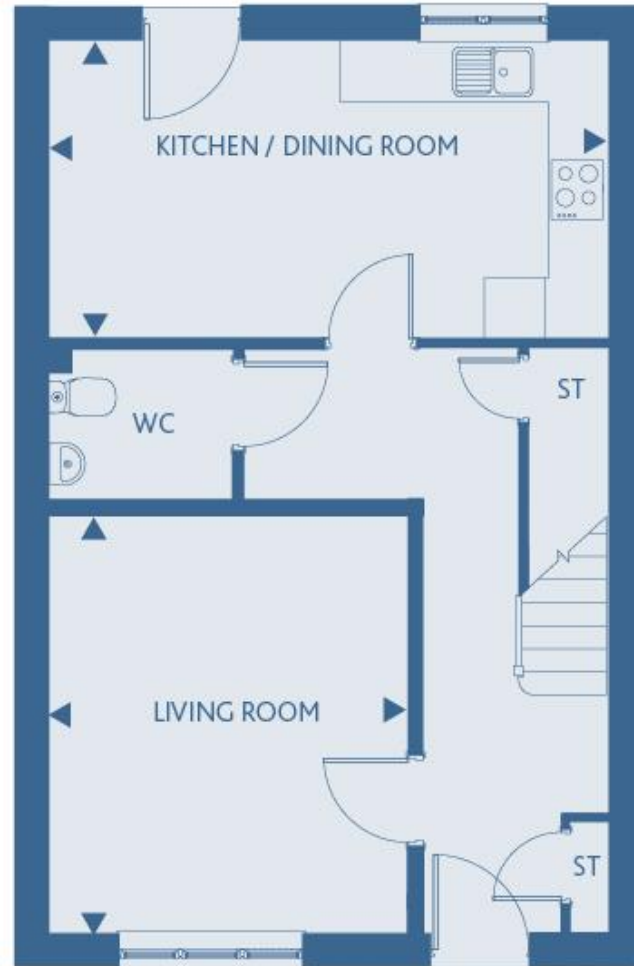
10'4" x 10'8" 3.15m x 3.26m

### BEDROOM 3

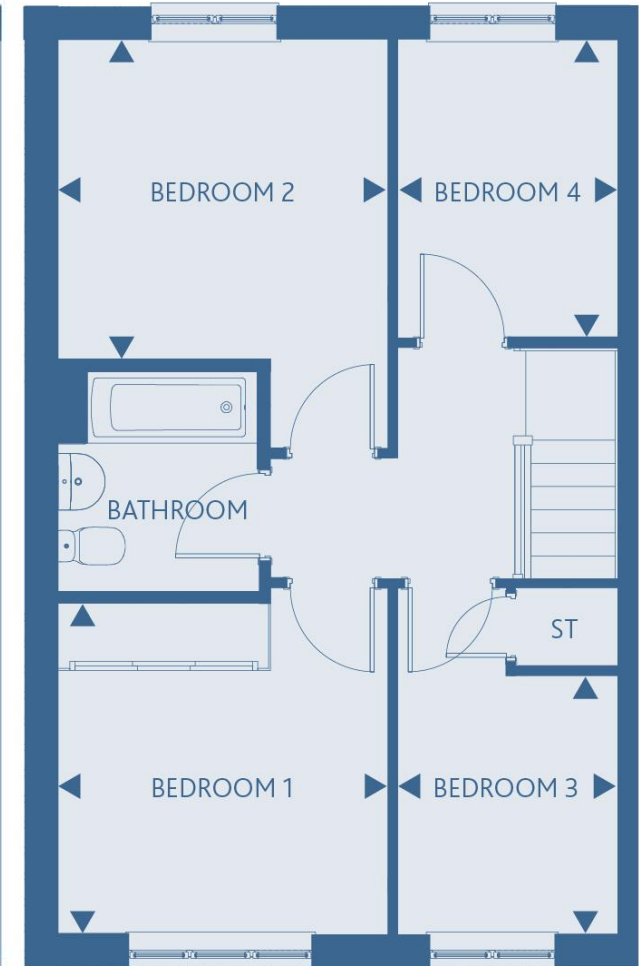
8'4" x 7'1" 2.55m x 2.18m

### BEDROOM 4

9'7" x 7'1" 2.94m x 2.18m



GROUND FLOOR




FIRST FLOOR

These particulars do not constitute any part of an offer or contract. Any intended purchasers must satisfy themselves as to the correctness of each of the statements contained in these particulars. All floor layouts may be subject to changes. The dimensions given on the plan are subject to minor variations intended for guidance only and are not to be used for carpets, appliances or items of furniture.

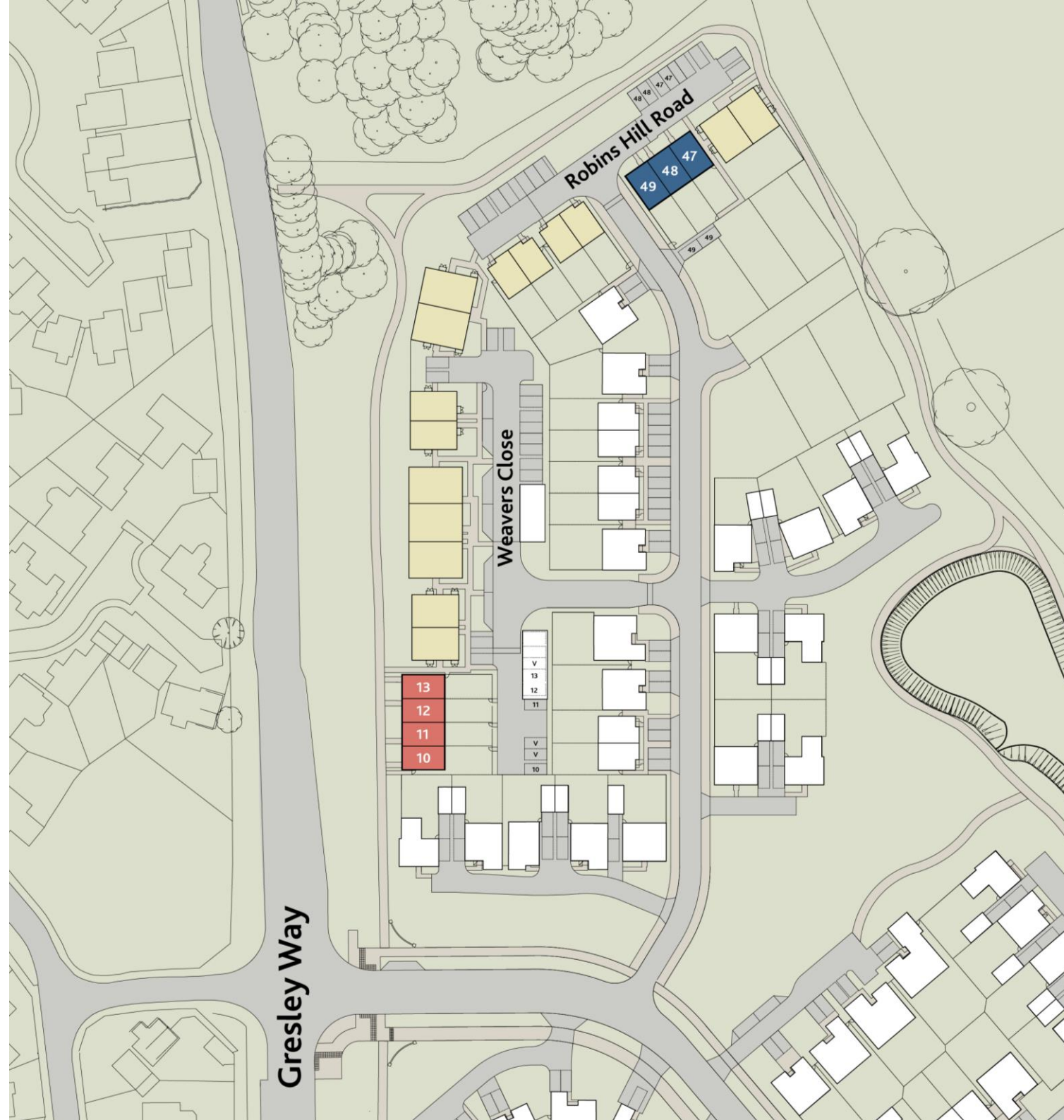




# SITE PLAN

 Rented properties

These particulars do not constitute any part of an offer or contract. Any intended purchasers must satisfy themselves as to the correctness of each of the statements contained in these particulars. All floor layouts may be subject to changes. The dimensions given on the plan are subject to minor variations intended for guidance only and are not to be used for carpets, appliances or items of furniture.



**////// ParadigmLiving**

**For more information**

0300 303 8046

**[www.paradigmliving.co.uk](http://www.paradigmliving.co.uk)**

These particulars do not constitute any part of an offer or contract. Any intended purchasers must satisfy themselves as to the correctness of each of the statements contained in these particulars. All floor layouts may be subject to changes. The dimensions given on the plan are subject to minor variations intended for guidance only and are not to be used for carpets, appliances or items of furniture.

