

# The Arundel+ Century Mill



4-bedroom home, sleeps 7

4 | 

2 | 

1 | 



Artist's impression

## Key features

- Set over three storeys
- Three double bedrooms
- En-suite from master bedroom
- Downstairs W.C.
- Open plan kitchen/dining room
- Separate study/dressing room
- Driveway parking



## The Arundel+

Available plots

4, 6, 7, 9, 13, 15, 22  
23, 92, 93, 100 or 101

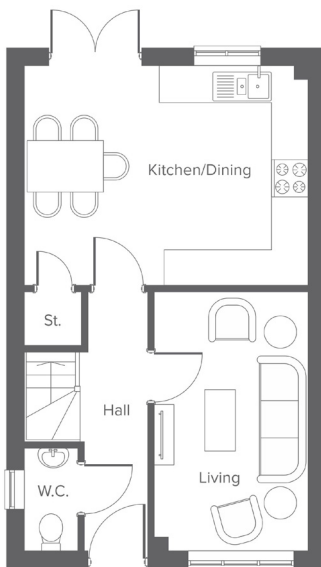
**George Street, Farnworth, BL4 9QT**

A collection of 106 beautifully designed new homes

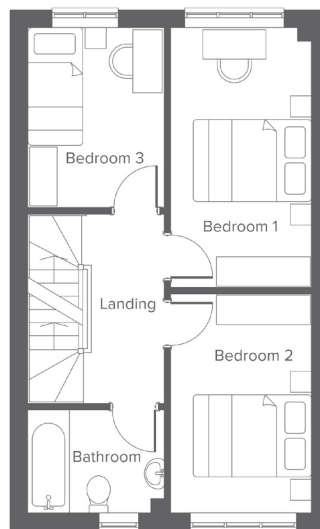
# The Arundel+ Century Mill

4-bedroom home, sleeps 7

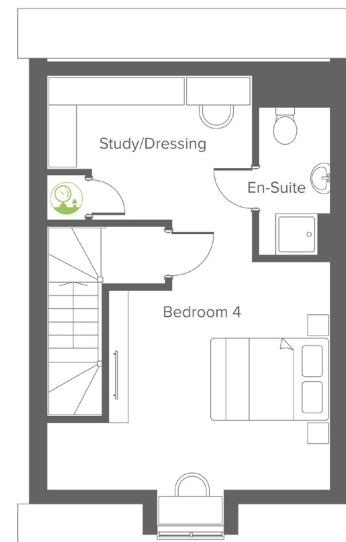
**Ground floor**



**First floor**



**Second floor**



Room	Metric	Imperial
Kitchen	4.90 x 3.76	16'0" x 12'4"
Living/Dining	2.45 x 4.43	8'0" x 14'6"
W.C.	0.93 x 1.77	3'0" x 5'9"

Room	Metric	Imperial
Bedroom 1	2.47 x 4.45	8'1" x 16'7"
Bedroom 2	2.47 x 3.74	8'1" x 12'3"
Bedroom 3	2.34 x 3.08	7'8" x 10'1"
Bathroom	2.34 x 1.77	7'8" x 5'9"

Room	Metric	Imperial
Bedroom 4	4.90 x 4.67	16'0" x 15'3"
Study/Dressing	3.52 x 2.55	11'6" x 8'4"
En-suite	1.29 x 2.51	4'2" x 8'2"

 Room for Air source heat pump/water tank

Total size **110.8m<sup>2</sup> / 1,192.6 ft<sup>2</sup>**

## Get in touch

 01204 896180

 [yourhousinggroup.co.uk](https://www.yourhousinggroup.co.uk)

 @yourhousing

 @Your\_Housing

 yourhousinggroup

 yhgtv