



# Brentwood Central CM14

Weston  
Homes 



DISCOVER  
YOUR PLACE

# at the heart of it all

## WELCOME TO BRENTWOOD CENTRAL

**A CONTEMPORARY COLLECTION OF  
ONE AND TWO BEDROOM APARTMENTS  
ARRANGED AROUND A LANDSCAPED  
COURTYARD IN A SOUGHT AFTER,  
CENTRAL LOCATION.**

Enjoy luxurious modern living just minutes from  
local amenities, excellent connections and  
beautiful open countryside.

Weston  
Homes 

PUT DOWN  
ROOTS AT A NEW  
**premium  
address**

Escape the hubbub of the town, but still just a stone's throw away from everything desirable Brentwood has to offer. Brentwood Central is designed for flexible, low maintenance living and built to Weston Homes' uncompromising standard of quality and finish.



Light, bright interiors with open plan layouts.





BRENTWOOD CENTRAL

Computer generated image



A few minutes' walk from Brentwood Central will bring you to Brentwood's bustling high street, with its abundance of amenities, attractive historical buildings and boutique town feel.

There is a diverse mix of eating and drinking options, from favourite chain restaurants to intimate bistros and quirky cafés. Highlights include ever popular Nando's and Giggling Squid, authentic Italian, Tarantino and vibrant restaurant and bar, Figo. For fine dining, it's just a short drive to decadent Felix Restaurant or elegant Alec's, where you can enjoy stunning countryside views.

CENTRAL FOR

# cosmopolitan living

LOCATION





The town has plenty of high street brands and supermarkets to choose from, or pretty Crown Street and Ropers Yard are home to some popular independent shops. The farmers' market, open every Friday and Saturday, offers a wide selection of fresh food along with gifts, plants and flowers and art. For more choice, Lakeside and Bluewater shopping centres are both within half an hour's drive, as is Chelmsford with its large John Lewis store and Everyman Cinema.

“”

## Since 2016, we have been offering clients a 'London' salon experience in the heart of Essex

We're an award-winning, friendly team with a passion for creating amazing hair and our green approach makes us proud to be recognised as the most sustainable salon in the county.

Rob Macgowan at  
**THE BRENTWOOD  
HAIRDRESSER**

0.3 miles from Brentwood Central



“”

## Calcott Hall is a family run business with a focus on quality and freshness

We have been farming here for over 40 years, gradually expanding to offer a wide range of home grown fruit and vegetables, alongside baked goods, cheeses and other delicious products, all from local suppliers wherever possible.

Dan Hunt at  
**CALCOTT HALL FARM SHOP**  
1.1 miles from Brentwood Central





A large, black, cursive sign spelling 'Alec's' is mounted on a light-colored wall above a doorway. To the left of the doorway is a black door with a white frame. To the right is a window with white shutters. A green bush is visible in the background to the right.

# Alec's

Four people are standing in front of the restaurant entrance. From left to right: a man with long hair in a dark suit and blue tie; a woman in a black dress; a man in a white chef's coat and a blue and white striped apron; and another man in a white chef's coat and a blue and white striped apron. They are all smiling at the camera.

“““  
We are proud to offer exceptional dining with breathtaking countryside views, just minutes from the centre of Brentwood

Alec's has established itself as one of Essex's leading fish restaurants, attracting customers from near and far for our quality ingredients and excellent service.

Ajay Barak at

**ALEC'S RESTAURANT**

3.3 miles from Brentwood Central

# CENTRAL FOR countryside charm

Whether you enjoy scenic strolls and woodland walks, hitting the gym or perfecting your swing, with sprawling countryside and leisure facilities on the doorstep, there are endless opportunities for an active lifestyle.

Get back to nature with pretty parks, fields and nature reserves within easy reach, including 500 acre Thorndon Park with its open parkland, colourful woodlands and much loved Gruffalo Trail. King George's Playing Fields provide play and sports facilities alongside green space and formal gardens, while the vast Weald Country Park is known for its varied wildlife and spectacular views.

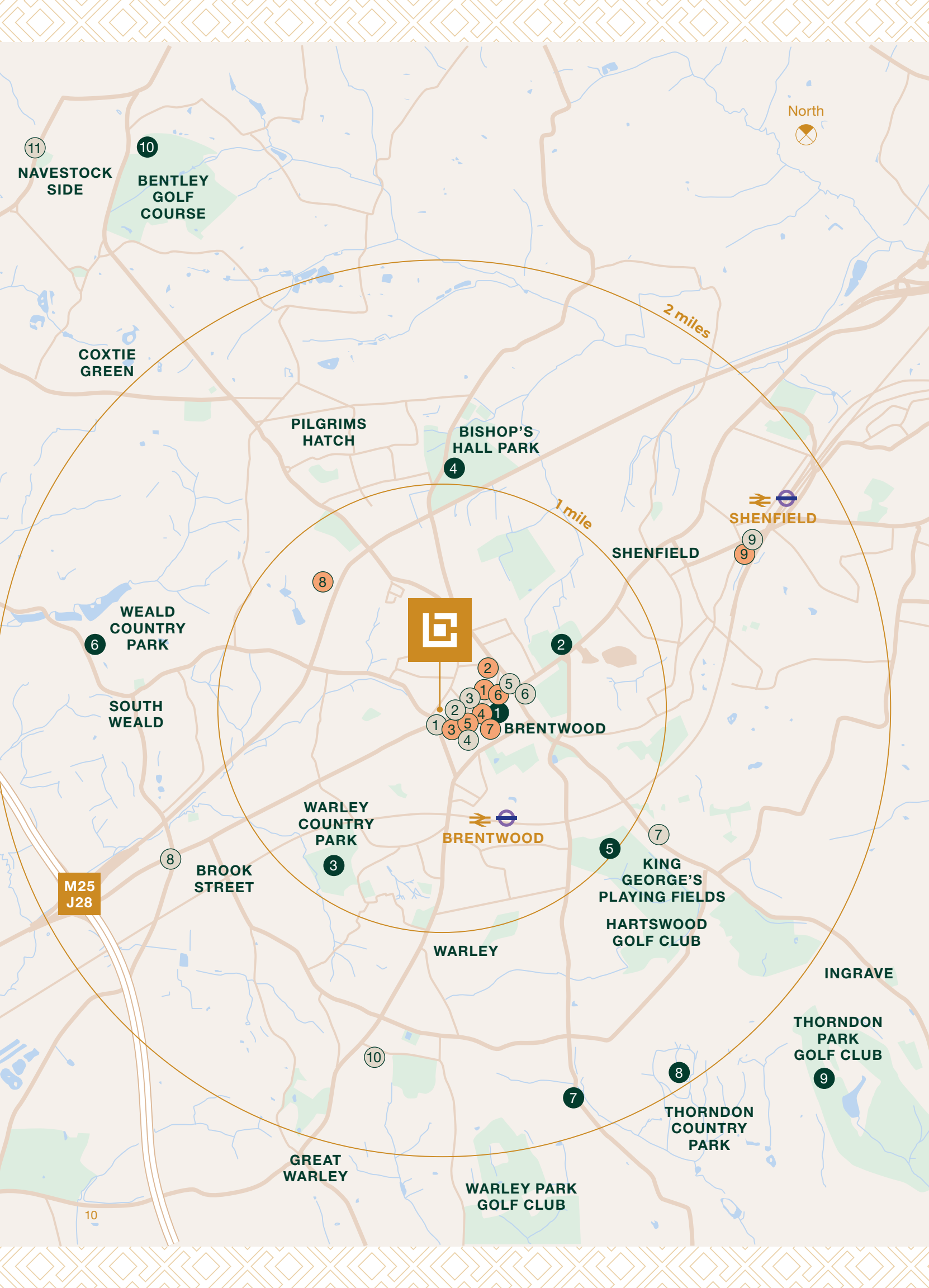


LOCATION



Looking to pick up the pace, then there are several good gyms to choose from, with the nearest being just a few minutes' walk from Brentwood Central. Alternatively, The Brentwood Centre offers sports and fitness facilities and classes for all abilities, or you don't have to go far for a sociable game of padel. For keen golfers, there are many highly regarded clubs within an easy drive, with both Thorndon Park and Bentley golf courses rated within the top ten in the county.





North



11

NAVESTOCK  
SIDE

10

BENTLEY  
GOLF  
COURSE

COXTIE  
GREEN

2 miles

PILGRIMS  
HATCH

BISHOP'S  
HALL PARK

4

1 mile

SHENFIELD

SHENFIELD

9

9



2

WEALD  
COUNTRY  
PARK

6

SOUTH  
WEALD

BRENTWOOD

8

WARLEY  
COUNTRY  
PARK

3

BRENTWOOD

KING  
GEORGE'S  
PLAYING FIELDS

5

7

HARTSWOOD  
GOLF CLUB

M25  
J28

8

BROOK  
STREET

WARLEY

INGRAVE

THORNDON  
PARK  
GOLF CLUB

9

GREAT  
WARLEY

10

7

THORNDON  
COUNTRY  
PARK

8

WARLEY PARK  
GOLF CLUB

10

# CENTRAL FOR connections & convenience

The development's central location means you're spoilt for choice when it comes to dining and leisure options.

For business or pleasure, commuters are catered for with Brentwood station just half a mile away, providing direct links to Stratford in half an hour, London Liverpool Street in less than 40 minutes, Paddington in 50 minutes and Heathrow in 1 hour 20 minutes via the new Elizabeth line.



## PARKS & LEISURE

- 1. BETTER GYM**  
0.2 miles
- 2. BRENTWOOD CRICKET CLUB**  
0.8 miles
- 3. WARLEY COUNTRY PARK**  
1 mile
- 4. THE BRENTWOOD CENTRE**  
1.1 miles
- 5. KING GEORGE'S PLAYING FIELDS**  
1.4 miles
- 6. WEALD COUNTRY PARK**  
1.8 miles
- 7. BRENTWOOD HARD COURT TENNIS & PADEL CLUB**  
2.3 miles
- 8. THORNDON COUNTRY PARK**  
2.6 miles
- 9. THORNDON PARK GOLF CLUB**  
2.9 miles
- 10. BENTLEY GOLF CLUB**  
3.1 miles



## BARS & RESTAURANTS

- 1. LEMONGRASS**  
0.1 miles
- 2. FIGO**  
0.1 miles
- 3. GAIL'S BAKERY**  
0.2 miles
- 4. TARANTINO**  
0.2 miles
- 5. GIGGLING SQUID**  
0.4 miles
- 6. THE BRENTWOOD KITCHEN**  
0.4 miles
- 7. MASONS RESTAURANT**  
1.3 miles
- 8. THE NAG'S HEAD**  
1.5 miles
- 9. THE LOT BAR & RESTAURANT**  
1.6 miles
- 10. FELIX WARLEY**  
1.7 miles
- 11. ALEC'S RESTAURANT**  
3.3 miles



## SHOPPING

- 1. BRENTWOOD MARKET**  
0.2 miles
- 2. SAINSBURY'S**  
0.3 miles
- 3. FRENCH QUARTER**  
0.2 miles
- 4. TAYLOR WINES**  
0.2 miles
- 5. BIZARA CARDS**  
0.2 miles
- 6. MARKS & SPENCER**  
0.3 miles
- 7. THE BAYTREE SHOPPING CENTRE**  
0.3 miles
- 8. CALCOTT HALL FARM SHOP**  
1.1 miles
- 9. LIQUORICE WINE**  
1.7 miles



THE DEVELOPMENT

Computer generated image

# YOUR relaxing retreat

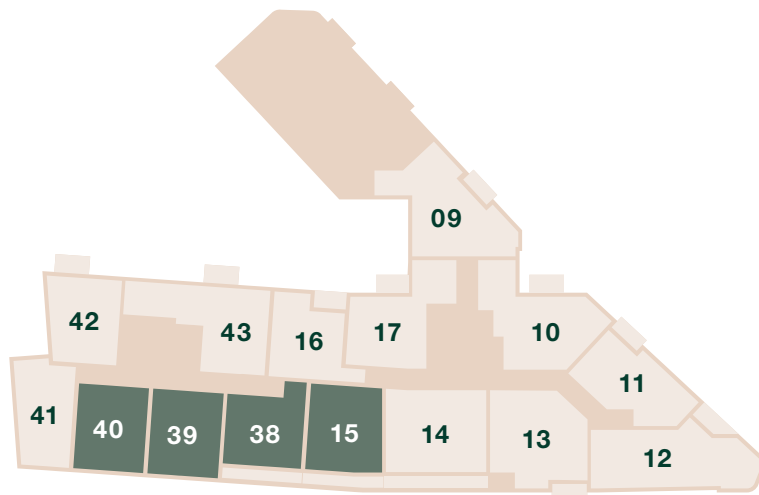
Set over five storeys, Brentwood Central comprises 60 one and two bedroom apartments arranged around an attractively landscaped communal courtyard, a wonderful place away from it all for residents to unwind and socialise. Most properties also have the benefit of private outside space, with top floor apartments boasting spacious private terraces.



Contemporary, luxurious interiors provide an elegant and calming backdrop.

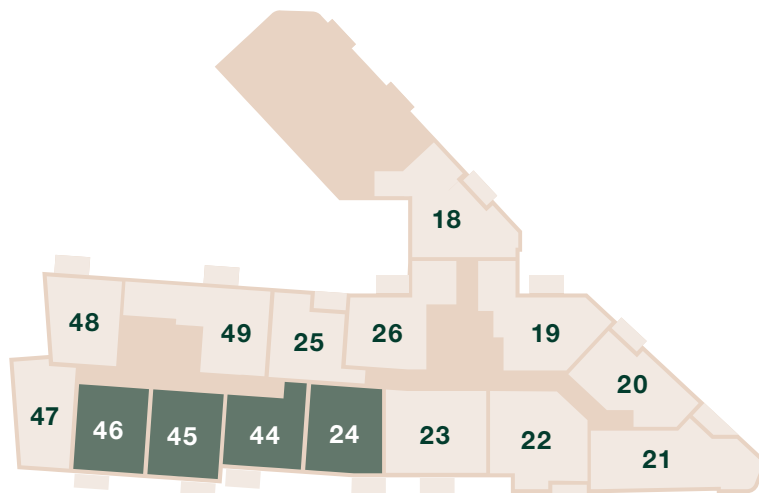
# floorplates

## FIRST FLOOR



Plots	Beds	Area	Page
09	2	779ft <sup>2</sup>	17
10	2	771ft <sup>2</sup>	18
11	1	590ft <sup>2</sup>	18
12	2	838ft <sup>2</sup>	19
13	2	764ft <sup>2</sup>	19
14	2	753ft <sup>2</sup>	20
15	2	579ft <sup>2</sup>	20
16	1	534ft <sup>2</sup>	23
17	2	670ft <sup>2</sup>	24
38	1	537ft <sup>2</sup>	21
39	1	549ft <sup>2</sup>	21
40	1	549ft <sup>2</sup>	21
41	1	527ft <sup>2</sup>	22
42	1	539ft <sup>2</sup>	22
43	2	736ft <sup>2</sup>	23

## SECOND FLOOR



Plots	Beds	Area	Page
18	2	779ft <sup>2</sup>	17
19	2	771ft <sup>2</sup>	18
20	1	590ft <sup>2</sup>	18
21	2	838ft <sup>2</sup>	19
22	2	764ft <sup>2</sup>	19
23	2	757ft <sup>2</sup>	20
24	2	579ft <sup>2</sup>	20
25	1	534ft <sup>2</sup>	23
26	2	670ft <sup>2</sup>	24
44	1	537ft <sup>2</sup>	21
45	1	549ft <sup>2</sup>	21
46	1	549ft <sup>2</sup>	21
47	1	527ft <sup>2</sup>	22
48	1	539ft <sup>2</sup>	22
49	2	736ft <sup>2</sup>	23

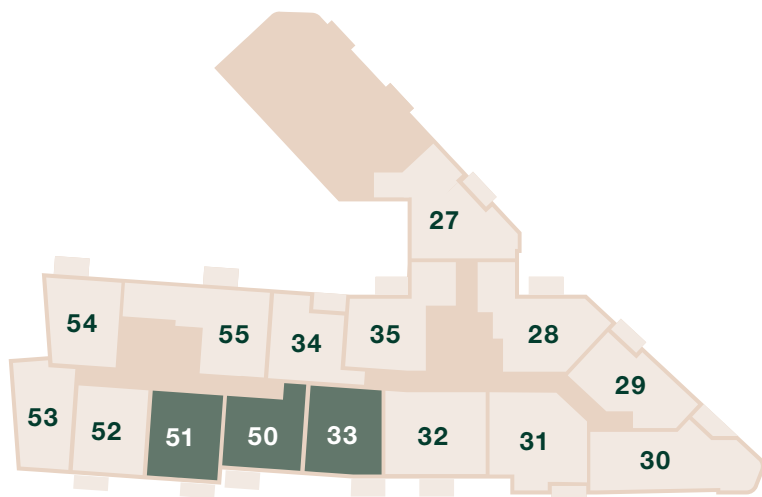
■ Discount Market Sale homes, subject to planning

Parking is available on the ground floor, see page 17 'Ground floor parking and facilities' for further information.



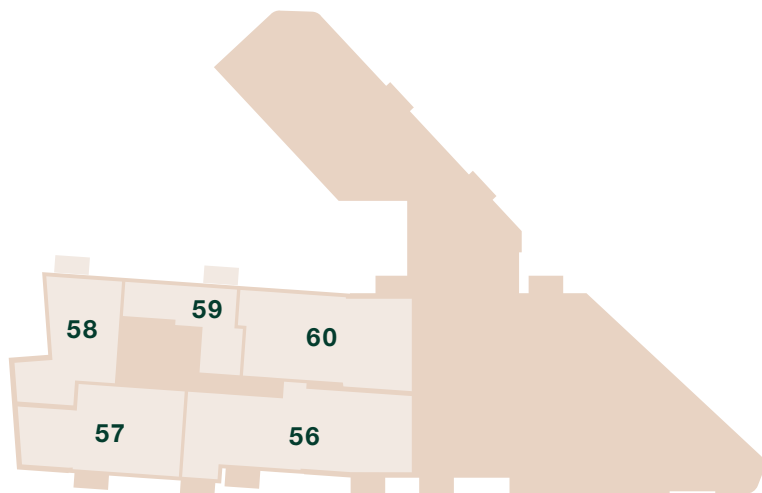


### THIRD FLOOR



Plots	Beds	Area	Page
27	2	732ft <sup>2</sup>	24
28	2	771ft <sup>2</sup>	18
29	1	590ft <sup>2</sup>	18
30	2	838ft <sup>2</sup>	19
31	2	764ft <sup>2</sup>	19
32	2	757ft <sup>2</sup>	20
33	2	579ft <sup>2</sup>	20
34	1	534ft <sup>2</sup>	23
35	2	661ft <sup>2</sup>	25
50	1	537ft <sup>2</sup>	21
51	1	549ft <sup>2</sup>	21
52	1	549ft <sup>2</sup>	21
53	1	527ft <sup>2</sup>	22
54	1	539ft <sup>2</sup>	22
55	2	736ft <sup>2</sup>	23

### FOURTH FLOOR



Plots	Beds	Area	Page
56	2	801ft <sup>2</sup>	25
57	2	817ft <sup>2</sup>	26
58	1	593ft <sup>2</sup>	26
59	1	528ft <sup>2</sup>	27
60	2	772ft <sup>2</sup>	27

Maximum dimensions are shown. They are intended as a guide only and are subject to change. Not all plans are to scale. Please speak to the sales consultant for further information.



# floorplans

North



### GROUND FLOOR PARKING AND FACILITIES

Entrance  
Lobby

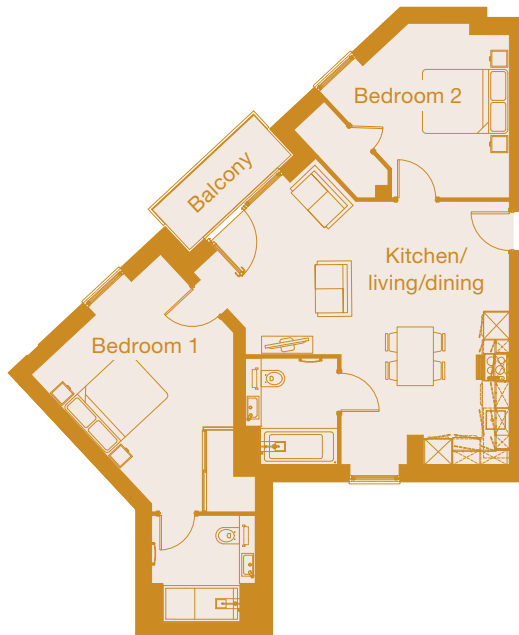


- Cycle Stands
- Disabled Parking
- Electric car charging parking port
- Bin Store

Cycle Store



North



#### TYPE 9

72m<sup>2</sup> / 779ft<sup>2</sup>

#### KITCHEN/LIVING/DINING

5822mm x 5808mm / 19'1" x 19'1"

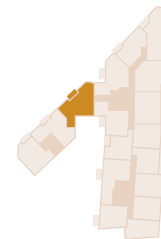
#### BEDROOM 1

3895mm x 3891mm / 12'9" x 12'9"

#### BEDROOM 2

3850mm x 4025mm / 12'8" x 13'2"

First floor – Plot 9  
Second floor – Plot 18



Maximum dimensions are shown. They are intended as a guide only and are subject to change. Not all plans are to scale. Please speak to the sales consultant for further information.

# floorplans

## TYPE 10

72m<sup>2</sup> / 771ft<sup>2</sup>

### KITCHEN/LIVING/DINING

6698mm x 4288mm / 22' x 14'1"

### BEDROOM 1

4588mm x 3430mm / 15'1" x 11'3"

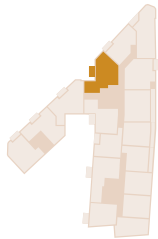
### BEDROOM 2

3291mm x 3175mm / 10'10" x 10'5"

First floor – Plot 10

Second floor – Plot 19

Third floor – Plot 28



## TYPE 11

55m<sup>2</sup> / 590ft<sup>2</sup>

### KITCHEN/LIVING/DINING

6217mm x 6092mm / 20'5" x 20'

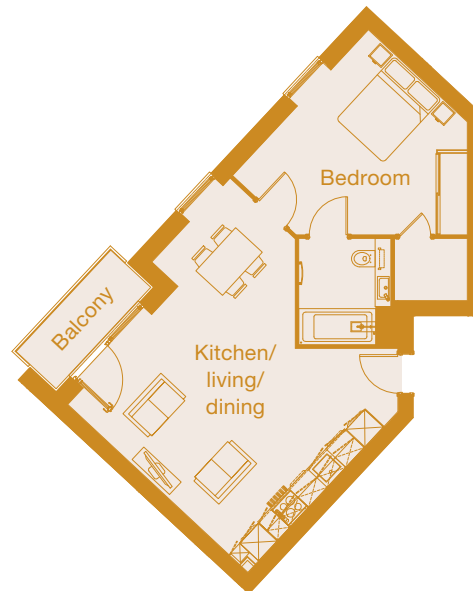
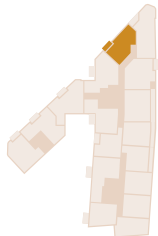
### BEDROOM

4396mm x 4175mm / 14'5" x 13'8"

First floor – Plot 11

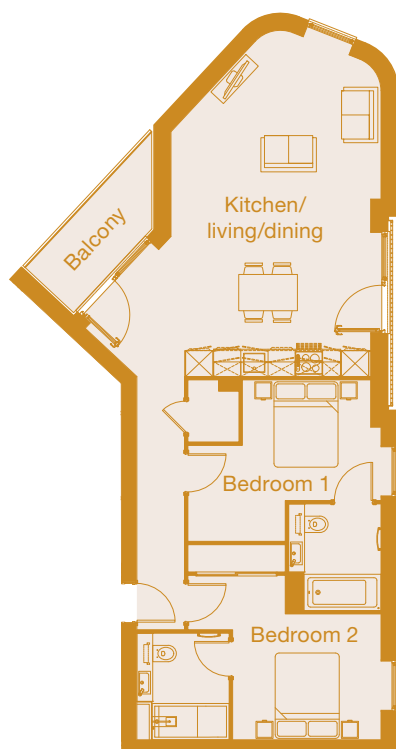
Second floor – Plot 20

Third floor – Plot 29



Maximum dimensions are shown. They are intended as a guide only and are subject to change. Not all plans are to scale. Please speak to the sales consultant for further information.

North



**TYPE 12**

78m<sup>2</sup> / 838ft<sup>2</sup>

**KITCHEN/LIVING/DINING**

7578mm x 4629mm / 24'10" x 15'2"

**BEDROOM 1**

4255mm x 3560mm / 13'11" x 11'8"

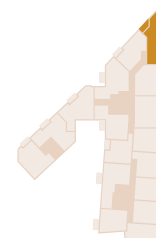
**BEDROOM 2**

4300mm x 3625mm / 14'1" x 11'11"

First floor – Plot 12

Second floor – Plot 21

Third floor – Plot 30



**TYPE 13**

71m<sup>2</sup> / 764ft<sup>2</sup>

**KITCHEN/LIVING/DINING**

5598mm x 3484mm / 18'4" x 11'5"

**BEDROOM 1**

5130mm x 2800mm / 16'10" x 9'2"

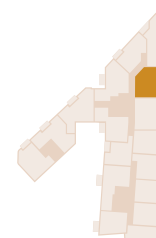
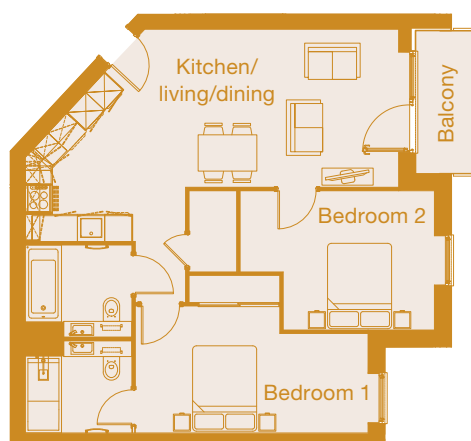
**BEDROOM 2**

4282mm x 3071mm / 14'1" x 10'1"

First floor – Plot 13

Second floor – Plot 22

Third floor – Plot 31



# floorplans

## TYPE 14

70m<sup>2</sup> / 753ft<sup>2</sup>

### KITCHEN/LIVING/DINING

7515mm x 4123mm / 24'8" x 13'6"

### BEDROOM 1

5025mm x 2882mm / 16'6" x 9'5"

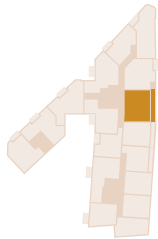
### BEDROOM 2

5090mm x 2800mm / 16'8" x 9'2"

First floor – Plot 14

Second floor – Plot 23

Third floor – Plot 32



## TYPE 15

54m<sup>2</sup> / 579ft<sup>2</sup>

### KITCHEN/LIVING/DINING

7878mm x 4389mm / 25'10" x 14'5"

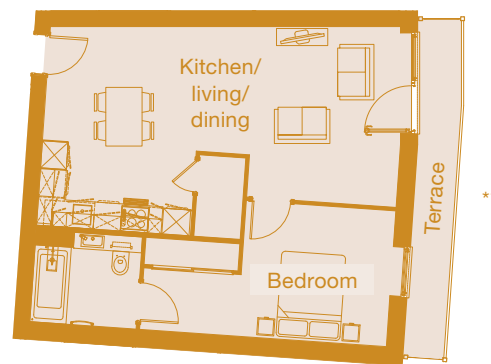
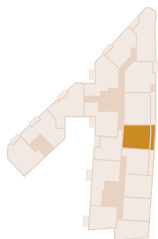
### BEDROOM

5453mm x 3000mm / 17'11" x 9'10"

First floor – Plot 15<sup>+</sup>

Second floor – Plot 24<sup>+</sup>

Third floor – Plot 33<sup>+</sup>



<sup>+</sup> Discount Market Sale home, subject to planning

Maximum dimensions are shown. They are intended as a guide only and are subject to change.

Not all plans are to scale. Please speak to the sales consultant for further information. \* Balcony to Plots 23 and 32. \*\* Balcony to Plots 24 and 33.

North



**TYPE 16**

50m<sup>2</sup> / 537ft<sup>2</sup>

**KITCHEN/LIVING/DINING**

6400mm x 4253mm / 21' x 13'11"

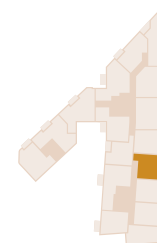
**BEDROOM**

5505mm x 2860mm / 18'1" / 9'5"

First floor – Plot 38 <sup>+</sup>

Second floor – Plot 44 <sup>+</sup>

Third floor – Plot 50 <sup>+</sup>



**TYPE 17**

51m<sup>2</sup> / 549ft<sup>2</sup>

**KITCHEN/LIVING/DINING**

7800mm x 3313mm / 25'7" x 10'10"

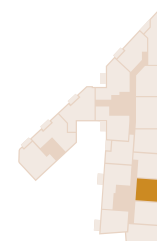
**BEDROOM**

5375mm x 2906mm / 17'8" x 9'6"

First floor – Plot 39 <sup>+</sup> and 40 (h) <sup>+</sup>

Second floor – Plot 45 <sup>+</sup> and 46 (h) <sup>+</sup>

Third floor – Plot 51 <sup>+</sup> and 52 (h)



\* Balcony to Plots 44 and 50. \*\* No balcony to Plots 39 and 40. (h) Handed Plot.

# floorplans

## TYPE 18

49m<sup>2</sup> / 527ft<sup>2</sup>

### KITCHEN/DINING

3461mm x 3432mm / 11'4" x 11'3"

### LIVING

6400mm x 3217mm / 21' x 10'7"

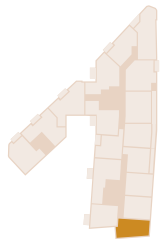
### BEDROOM

4378mm x 3295mm / 14'4" x 10'10"

First floor – Plot 41

Second floor – Plot 47

Third floor – Plot 53



## TYPE 19

50m<sup>2</sup> / 539ft<sup>2</sup>

### KITCHEN/LIVING/DINING

7872mm x 3988mm / 25'10" x 13'1"

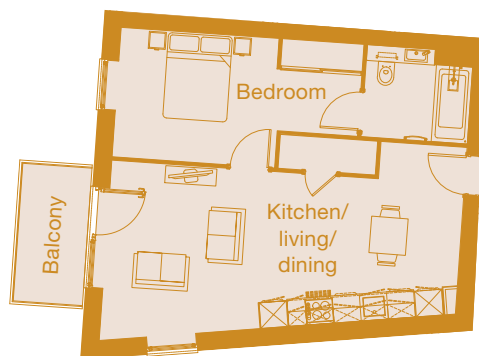
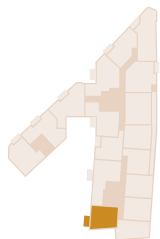
### BEDROOM

5366mm x 2860mm / 17'7" x 9'5"

First floor – Plot 42

Second floor – Plot 48

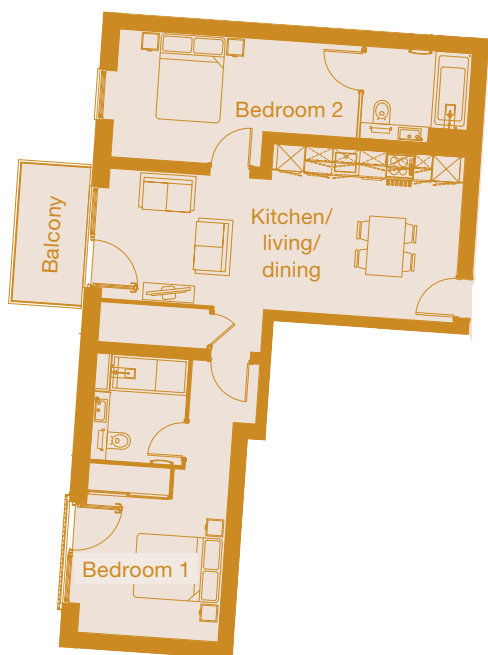
Third floor – Plot 54



Maximum dimensions are shown. They are intended as a guide only and are subject to change. Not all plans are to scale. Please speak to the sales consultant for further information.



North



**TYPE 20**

68m<sup>2</sup> / 736ft<sup>2</sup>

**KITCHEN/LIVING/DINING**

7791mm x 3660mm / 25'7" x 12'

**BEDROOM 1**

6170mm x 3101mm / 20'3" x 10'2"

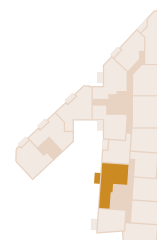
**BEDROOM 2**

5366mm x 2822mm / 17'7" x 9'3"

First floor – Plot 43

Second floor – Plot 49

Third floor – Plot 55



**TYPE 21**

50m<sup>2</sup> / 534ft<sup>2</sup>

**KITCHEN/LIVING/DINING**

6216mm x 4443mm / 20'5" x 14'7"

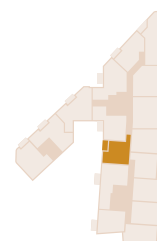
**BEDROOM**

5366mm x 3317mm / 17'7" x 10'11"

First floor – Plot 16

Second floor – Plot 25

Third floor – Plot 34



# floorplans

## TYPE 22

62m<sup>2</sup> / 670ft<sup>2</sup>

### KITCHEN/LIVING/DINING

6602mm x 4192mm / 21'8" x 13'9"

### BEDROOM 1

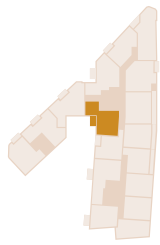
4053mm x 3279mm / 13'4" x 10'9"

### BEDROOM 2

2977mm x 2700mm / 9'9" x 8'10"

First floor – Plot 17

Second floor – Plot 26



## TYPE 23

68m<sup>2</sup> / 732ft<sup>2</sup>

### KITCHEN/LIVING/DINING

5822mm x 5556mm / 19'1" x 18'3"

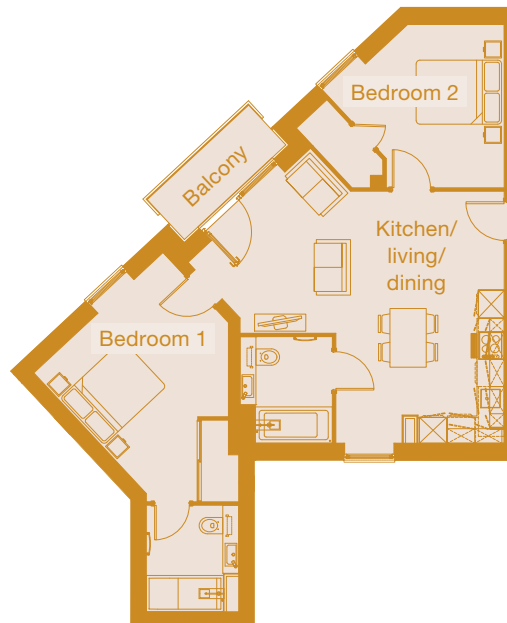
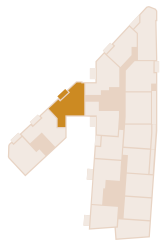
### BEDROOM 1

3895mm x 3639mm / 12'9" x 11'11"

### BEDROOM 2

3855mm x 3600mm / 12'8" x 11'10"

Third floor – Plot 27



Maximum dimensions are shown. They are intended as a guide only and are subject to change. Not all plans are to scale. Please speak to the sales consultant for further information.

North



**TYPE 24**

61m<sup>2</sup> / 661ft<sup>2</sup>

**KITCHEN/LIVING/DINING**

6602mm x 4192mm / 21'8" x 13'9"

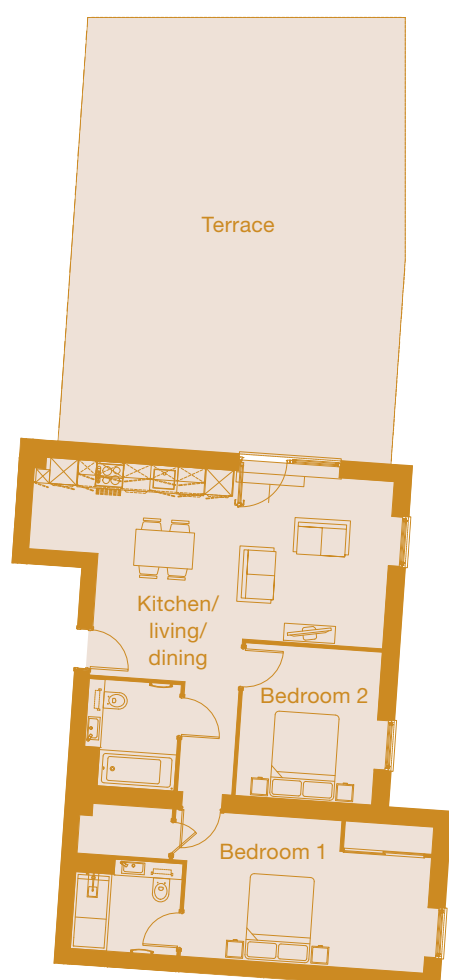
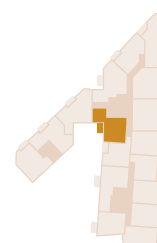
**BEDROOM 1**

3801mm x 3279mm / 12'6" x 10'9"

**BEDROOM 2**

2977mm x 2700mm / 9'9" x 8'10"

Third floor – Plot 35



**TYPE 25**

74m<sup>2</sup> / 801ft<sup>2</sup>

**KITCHEN/LIVING/DINING**

7930mm x 4720mm / 26' x 15'6"

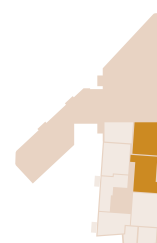
**BEDROOM 1**

5375mm x 3228mm / 17'8" x 10'7"

**BEDROOM 2**

3375mm x 3015mm / 11'1" x 9'11"

Fourth floor – Plot 56



# floorplans

## TYPE 26

76m<sup>2</sup> / 817ft<sup>2</sup>

### KITCHEN/LIVING/DINING

7800mm x 4685mm / 25'7" x 15'4"

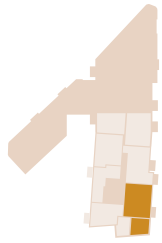
### BEDROOM 1

5375mm x 2800mm / 17'8" x 9'2"

### BEDROOM 2

4100mm x 2800mm / 13'5" x 9'2"

Fourth floor – Plot 57



## TYPE 27

55m<sup>2</sup> / 593ft<sup>2</sup>

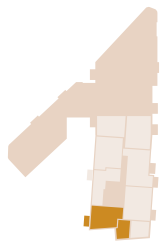
### KITCHEN/LIVING/DINING

7796mm x 3988mm / 25'7" x 13'1"

### BEDROOM

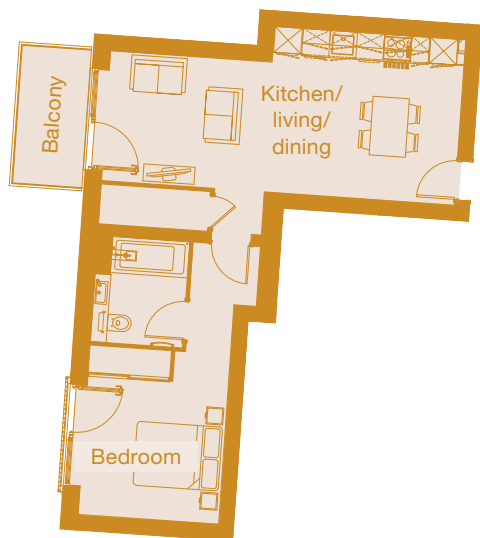
5363mm x 2860mm / 17'7" x 9'4"

Fourth floor – Plot 58



Maximum dimensions are shown. They are intended as a guide only and are subject to change. Not all plans are to scale. Please speak to the sales consultant for further information.

North



**TYPE 28**

49m<sup>2</sup> / 528ft<sup>2</sup>

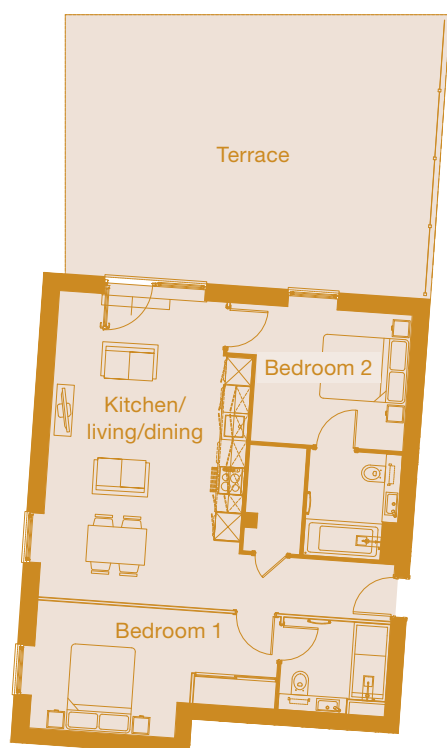
**KITCHEN/LIVING/DINING**

7791mm x 3656mm / 25'7" x 12'

**BEDROOM**

6170mm x 3101mm / 20'3" x 10'2"

Fourth floor – Plot 59



**TYPE 29**

72m<sup>2</sup> / 772ft<sup>2</sup>

**KITCHEN/LIVING/DINING**

6765mm x 4350mm / 22'2" x 14'3"

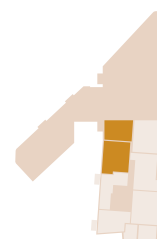
**BEDROOM 1**

5366mm x 2823mm / 17'7" x 9'3"

**BEDROOM 2**

4016mm x 3015mm / 13'2" x 9'11"

Fourth floor – Plot 60





SPECIFICATION





# specification

The elegant homes at Brentwood Central include an all-inclusive specification enabling you to start enjoying your home from the moment you move in. With a wide range of luxurious options to choose from, you can personalise your home and truly make it your own. Contemporary open plan living spaces, superb bespoke designer kitchens and elegant bathrooms are all finished to the very highest standards.

Large windows provide an abundance of light throughout each apartment. Built with modern living in mind and designed to offer ease of maintenance, homes are well insulated to minimise heat loss, reduce running costs. Benefits include energy saving appliances, efficient heating systems and double glazed windows helping to lower utility bills. Hyperoptic superfast broadband to each home ensures Brentwood Central is perfectly placed to remain fully connected, both inside and out.



## GENERAL FINISHES

- Sprinkler system installed to all plots
- Forest oak doors with polished chrome ironmongery, matching door-linings, architraves and skirtings
- Choice of strip flooring to entrance hall, living area, dining area, kitchen and cloakrooms/ cupboards\*\*
- Choice of carpets with underlay to bedrooms\*\*
- Fitted mirrored wardrobes to principal bedroom
- Television and telephone points to living area and principal bedroom
- USB double power sockets to kitchen and principal bedroom
- Smoke alarms
- UPVC double-glazed windows and external doors
- Audio/visual entry system to apartments accessed via communal entrance doors
- Dimplex EDL200UK-630 air source heat pump hot water cylinder to provide hot water, and electric high efficiency panel heaters with programmer and room thermostat to provide space heating





## CONNECTIVITY

- Hyperoptic superfast broadband enabled with speeds of up to 1Gbps with same day connection, subject to contract†

## DESIGNER KITCHENS

- Wide choice of designer units by Oakwood Kitchens\*\*
- Choice of quartz stone worktops with full height and width quartz stone splashback\*\*
- Range of integrated appliances from Electrolux:
  - Stainless steel electric fan oven
  - Electric hob
  - Microwave
  - Fridge/freezer
  - Washer/dryer
  - Dishwasher
  - Stainless steel integrated extractor hood
- Fascino inset stainless steel sink
- Fascino designer tap with integrated instant boiling and cold filtered water facility
- Integrated stainless steel soap dispenser
- LED lighting under kitchen wall units

## LUXURIOUS BATHROOMS & EN-SUITES

- Fascino digitally controlled smart tap
- Smart mirror with LED lighting, shaver socket, digital clock and de-mist pad
- Bespoke vanity units with integrated storage space in a choice of three finishes\*\*
- Luxurious black porcelain worktop with mounted RAK Ceramics basin
- Arctic white shower trays and baths in matt finish with sleek stainless steel waste cover
- RAK Ceramics Hygiene+ WC with RAKRimless™ pan and soft-close ergonomic design seat
- Fascino Smart shower with integrated body-jets and digital control to shower-rooms, and/or Fascino Smart bath with digital control to bathrooms
- Heated chrome towel rails
- Choice of RAK Ceramics porcelain wall and floor tile colour with polished and matt finishes\*\*

## CONSTRUCTION METHOD

- Traditional build, brick and block construction with fully filled cavity insulation
- Ground floor: suspended beam and block or suspended reinforced concrete slab with insulation and screed over
- Upper floors: screed on pre-cast concrete planks or an insulated reinforced concrete podium slab supported on reinforced concrete columns at first floor
- Roof: insulated green roof laid to falls on pre-cast concrete planks and concrete screed or timber trusses, pitched roof with slates

\*\*Choices from Weston Homes range and subject to stage of construction.

†Terms and conditions apply, visit [hyperoptic.com](http://hyperoptic.com) for details.

Specification images taken from previous Weston Homes developments and are indicative.





Springfield Park, Maidstone



BUILT WITH  
PASSION

# delivered with pride



Weston Homes was formed in 1987 by Bob Weston, establishing what has now become one of the major property developers in the South East of England. Weston Homes has built a reputation for high quality design and build standards, delivered with a passionate desire to make a genuine difference to the lives of our customers and to leave a legacy of which we are justly proud.

Continually reassessing the marketplace, Weston Homes has combined the traditional skills of house-building with the ever-expanding opportunities created by new technology. The company has taken a revolutionary approach to property development - many of our properties' components are now pre-manufactured and tested in our own carefully controlled Weston-run factory, rather than on site. This enables the efficient fitting at a late stage of construction for fixtures such as kitchen worktops, wardrobes and bathroom vanity units, which incorporate bespoke basins, storage cabinets and associated plumbing. This minimises wasted materials whilst maximising the quality of your brand new home.

Weston Homes provides properties to exceed the expectations of purchasers both in terms of quality and value for money. Projects are hugely varied, ranging from select housing developments to large-scale city apartment complexes of many hundreds of homes. As well as new-build, the company has extensive experience of refurbishment and restoration work, breathing new life into historic and Listed buildings to give new purpose to Britain's architectural heritage.

*Exterior shown above is of Abbey Quay, Barking.*



Best Medium House Builder



Best Interior Design



Best Starter Home Scheme



Private Developer of the Year



Best Refurbishment Project

DESIGNED  
FOR

# modern life



There are many reasons to buy a new home, from living in an energy efficient property that's never been lived in and doesn't require any DIY, to peace of mind with a 10-year warranty. Weston Homes are here to guide you every step of the way.

#### SO WHY BUY NEW?

# 1.

**FULLY INCLUSIVE SPECIFICATION** means you can move in and start enjoying your new lifestyle from the moment you unlock the door.

# 2.

You'll be the **VERY FIRST HOMEOWNER** and won't inherit any DIY disasters from a previous occupier.

# 3.

**OUR HOMES ARE SUSTAINABLE** and built with the environment in mind, saving energy, water and your pocket.

# 4.

Carefully considered flexible living spaces, with **FULL HEIGHT WINDOWS AND LIGHT-FILLED ROOMS** are perfect for modern day living.

# 5.

Have peace of mind with a **10-YEAR NHBC WARRANTY**, including a two-year warranty from Weston Homes.

# 6.

We create new communities; places to **MAKE A GENUINE DIFFERENCE** to the lives of our customers.

# 7.

There are **NO FORWARD CHAINS** which takes away the uncertainty when buying an older home.



# COMMITMENT TO Our customers



## THE ENTIRE WESTON HOMES TEAM IS COMMITTED TO PROVIDING YOU, OUR CUSTOMERS, WITH QUALITY HOMES.

We are working to achieve one common goal: to ensure that you are satisfied and happy with your new home, from the moment that you make your reservation, to the day you move in and beyond.

No matter who you are dealing with, or what queries, questions or complaints you may have, you can be confident that our people and procedures will adhere to the terms of our customer charter and the 'New Homes Quality Code'. Copies of the 'New Homes Quality Code' are available from our selling agents and via our website; a copy (also identifying where further guidance can be found) will always be provided to you upon reservation.

Each property is quality checked and commissioned by our dedicated Customer Services team before handover to its new owner.

Your home will come with a 10-year NHBC policy which includes:

- Deposit protection from exchange of contracts
- A two-year builder warranty from legal completion directly with Weston Homes, backed by NHBC's dispute resolution service
- Eight years of structural defects insurance cover

For more details, please visit [www.nhbc.co.uk/homeowners](http://www.nhbc.co.uk/homeowners).







### **BRENTWOOD CENTRAL**

Western Road,  
Brentwood CM14 4SR  
T: 01277 231515

### **WESTON HOMES PLC**

Weston Group Business Centre  
Parsonage Road, Takeley,  
Essex CM22 6PU  
T: 01279 873333  
E: [sales@weston-homes.com](mailto:sales@weston-homes.com)  
W: [weston-homes.com](http://weston-homes.com)

The particulars are set out as a general outline only for the guidance of intending purchasers or lessees and do not constitute, nor constitute part of, an offer or contract. All descriptions, dimensions, references to condition and necessary permissions for use and occupation, and other details are given without responsibilities and any intending purchasers or tenants should not rely on them as statements or representations of fact but must satisfy themselves by inspection or otherwise as to the correctness of each of them. The information contained in this brochure is for guidance only. Weston Homes Plc operates a policy of continuous product development and features may therefore vary from time to time. Floor plans and dimensions can only be given as a guide and are indicative of the type only. The computer generated images, floor plans, configuration and layouts are included for guidance only, please refer to drawings. Interior photography shows previous Weston Homes developments and is indicative. It should be noted that the representations of Brentwood Central may not necessarily be accurate in every respect. These particulars should not be relied on as accurately describing any of the specific matters described by any order under the Consumer Protection from Unfair Trading Regulations (2008). This information does not constitute a contract of warranty. All details correct at time of going to print. Brentwood Central is the marketing name for use until a permanent postal address has been issued.