

Meadow View

Appledore

lovelivinghomes

by

lovelivinghomes

Meadow View



A beautiful new development of four, three-bedroom shared ownership homes situated in the small town of Appledore in Kent. Located near Ashford, enjoy the high-speed services to bustling cities such as Canterbury and London, whilst being surrounded by Kent Countryside.

Meadow View Site Plan



Meadow View
The Street
Appledore
TN26 2BU

This site plan depicts the intended layout and development mix at the time of creation and is for orientation purposes and may be subject to change. Parking, landscaping, finished locations and materials are all for guidance only.

 Love Living Homes 3 Bed Houses

Plot 1

3 Bed House



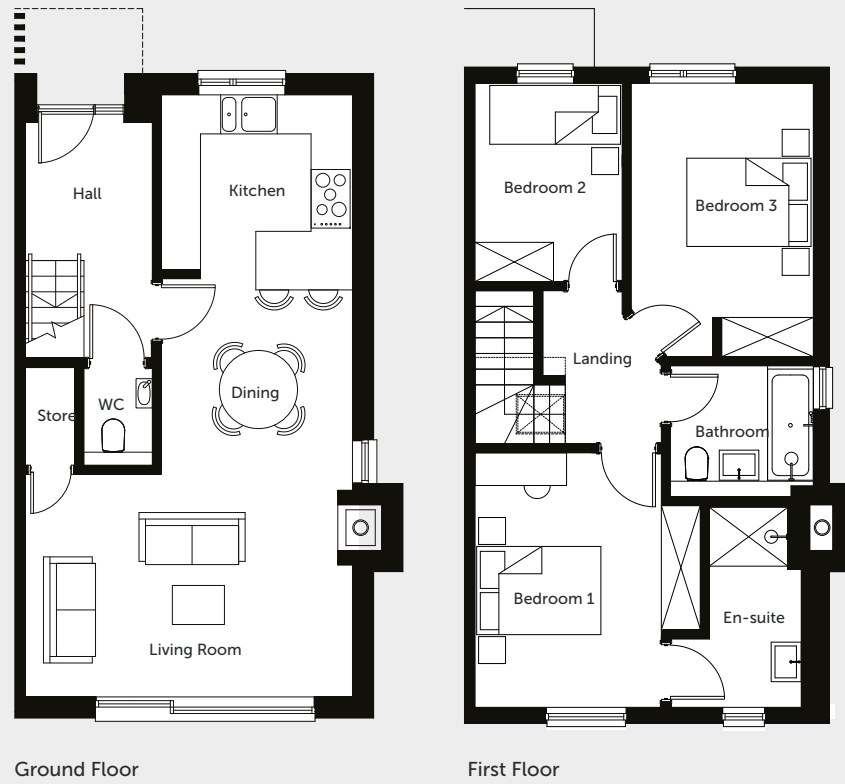
95 sqm / 1022 sqft



3 Bedrooms



1 Bathroom



Plot 2

3 Bed House



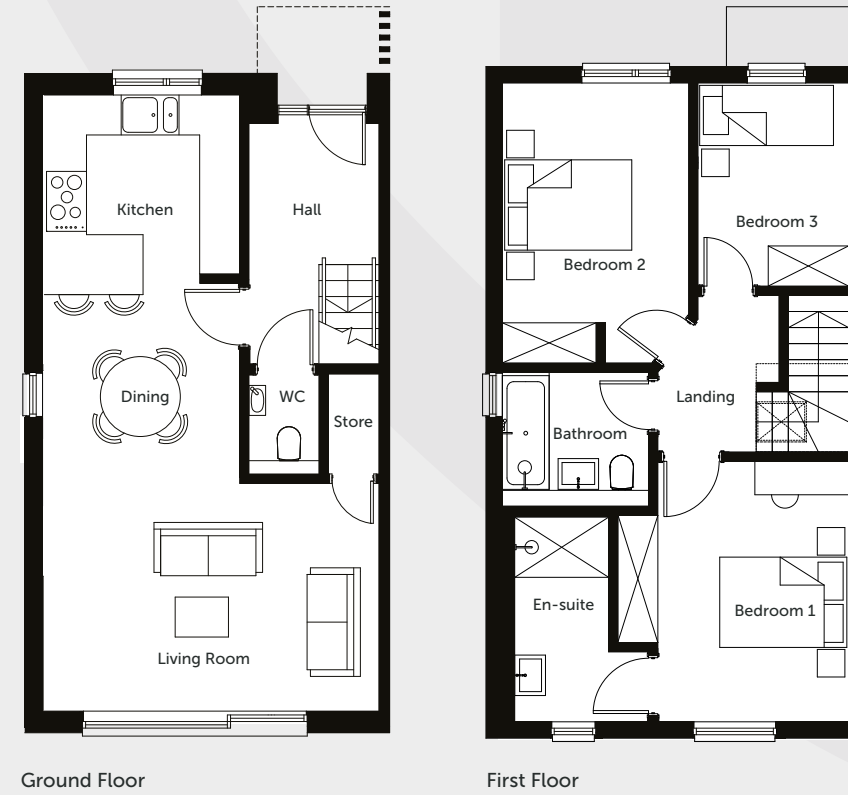
95 sqm / 1022 sqft



3 Bedrooms



1 Bathroom



DIMENSIONS

KITCHEN

2965mm x 2715mm - 9'9" x 8'11"

DINING

3005mm x 2965mm - 9'10" x 9'9"

LIVING ROOM

5055mm x 3450mm - 16'7" x 11'4"

BEDROOM 1

3945mm x 2915mm - 12'11" x 9'7"

BEDROOM 2

4235mm x 2835mm - 13'11" x 9'3"

BEDROOM 2

3085mm x 2315mm - 10'1" x 7'7"

Please note that all dimensions shown are for guidance only and maximum measurements are shown where necessary. Plans should not be used for furniture or other fittings. Furniture shown is for illustrative purposes only and not included. Individual units may vary according to location – please consult your sales advisor for more details.

DIMENSIONS

KITCHEN

2965mm x 2715mm - 9'9" x 8'11"

DINING

3005mm x 2965mm - 9'10" x 9'9"

LIVING ROOM

5055mm x 3450mm - 16'7" x 11'4"

BEDROOM 1

3945mm x 2915mm - 12'11" x 9'7"

BEDROOM 2

4235mm x 2835mm - 13'11" x 9'3"

BEDROOM 2

3085mm x 2315mm - 10'1" x 7'7"

Please note that all dimensions shown are for guidance only and maximum measurements are shown where necessary. Plans should not be used for furniture or other fittings. Furniture shown is for illustrative purposes only and not included. Individual units may vary according to location – please consult your sales advisor for more details.

Plot 3

3 Bed House



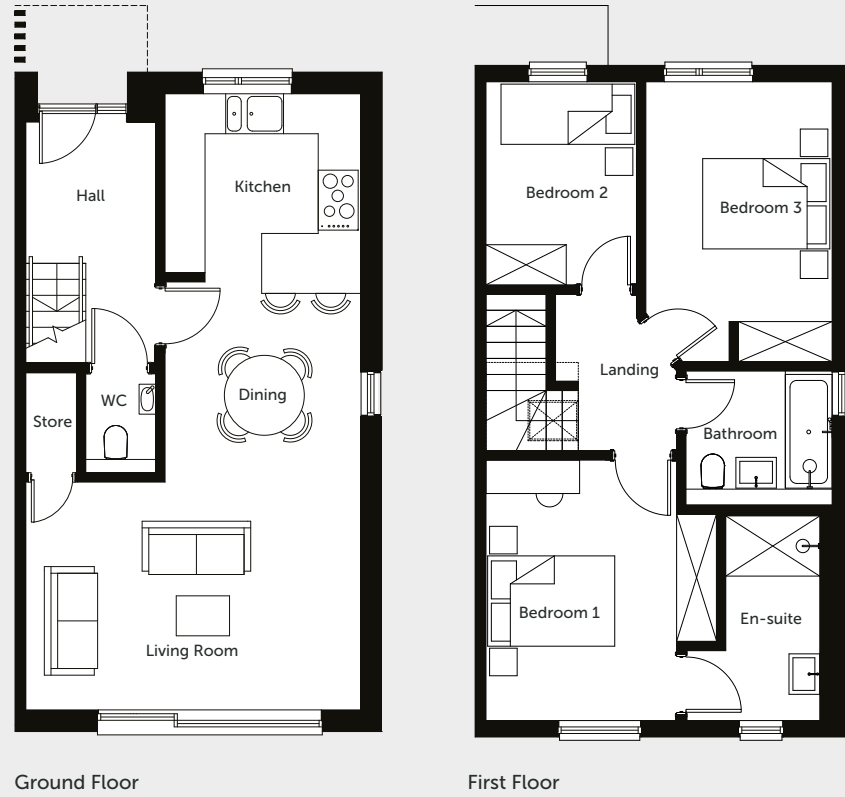
95 sqm / 1022 sqft



3 Bedrooms



1 Bathroom



Plot 4

3 Bed House



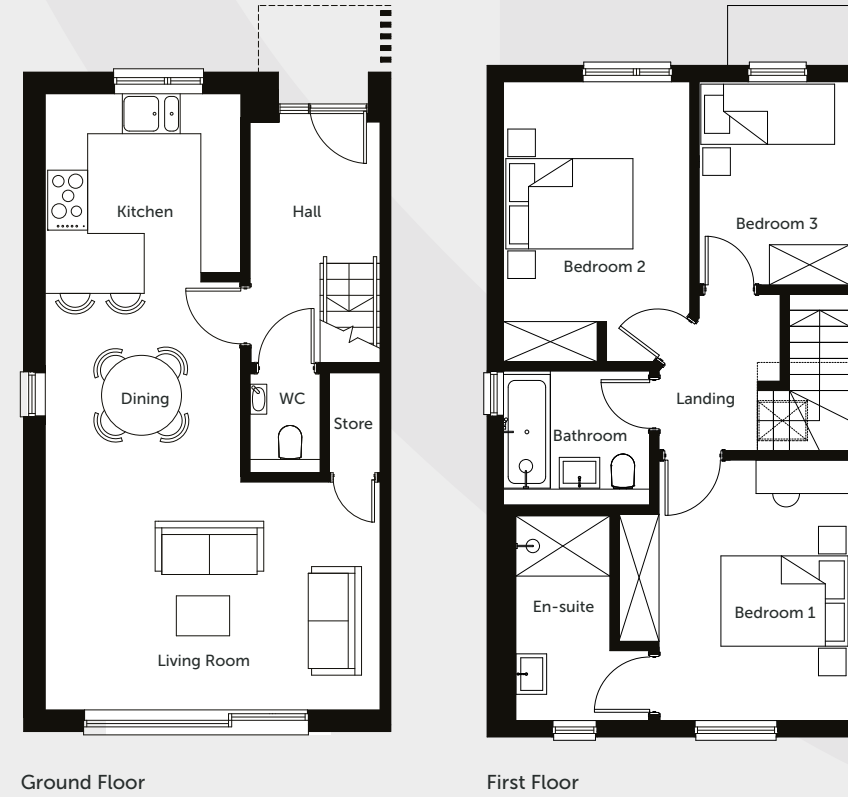
95 sqm / 1022 sqft



3 Bedrooms



1 Bathroom



DIMENSIONS

KITCHEN

2965mm x 2715mm - 9'9" x 8'11"

DINING

3005mm x 2965mm - 9'10" x 9'9"

LIVING ROOM

5055mm x 3450mm - 16'7" x 11'4"

BEDROOM 1

3945mm x 2915mm - 12'11" x 9'7"

BEDROOM 2

4235mm x 2835mm - 13'11" x 9'3"

BEDROOM 2

3085mm x 2315mm - 10'1" x 7'7"

Please note that all dimensions shown are for guidance only and maximum measurements are shown where necessary. Plans should not be used for furniture or other fittings. Furniture shown is for illustrative purposes only and not included. Individual units may vary according to location – please consult your sales advisor for more details.

DIMENSIONS

KITCHEN

2965mm x 2715mm - 9'9" x 8'11"

DINING

3005mm x 2965mm - 9'10" x 9'9"

LIVING ROOM

5055mm x 3450mm - 16'7" x 11'4"

BEDROOM 1

3945mm x 2915mm - 12'11" x 9'7"

BEDROOM 2

4235mm x 2835mm - 13'11" x 9'3"

BEDROOM 2

3085mm x 2315mm - 10'1" x 7'7"

Please note that all dimensions shown are for guidance only and maximum measurements are shown where necessary. Plans should not be used for furniture or other fittings. Furniture shown is for illustrative purposes only and not included. Individual units may vary according to location – please consult your sales advisor for more details.

Specification

All our homes at Meadow View include generous specifications to make life as comfortable and convenient as can be.

KITCHEN

- Contemporary dark green kitchen units with Omega Ellis Stone worktop
- Bushed Aluminium Splashback Panel & extractor fan
- Stainless steel sink and drainer
- Integrated fridge/freezer, double fan oven, induction hob, and dishwasher

BATHROOM

- Eco Slate Beige tiled bathroom suite with chrome fittings
- Shower over bath with glass screen
- Floating washbasin with mixer tap
- Heated towel radiators

INTERIOR & DECORATION

- Kitchen and living room is open plan
- Double glazing with easy clean hinges
- Textured, Karndean Knight Vinyl light wood effect floorings in bathrooms, kitchen and living room
- White emulsion to walls and ceilings and white satin to woodwork
- Durable neutral carpets to the stairs, landing and bedrooms
- High performance air source heat pump ASHP heating and cooling system
- Automatic room thermostat control
- TV / broadband connection points
- Underfloor heating

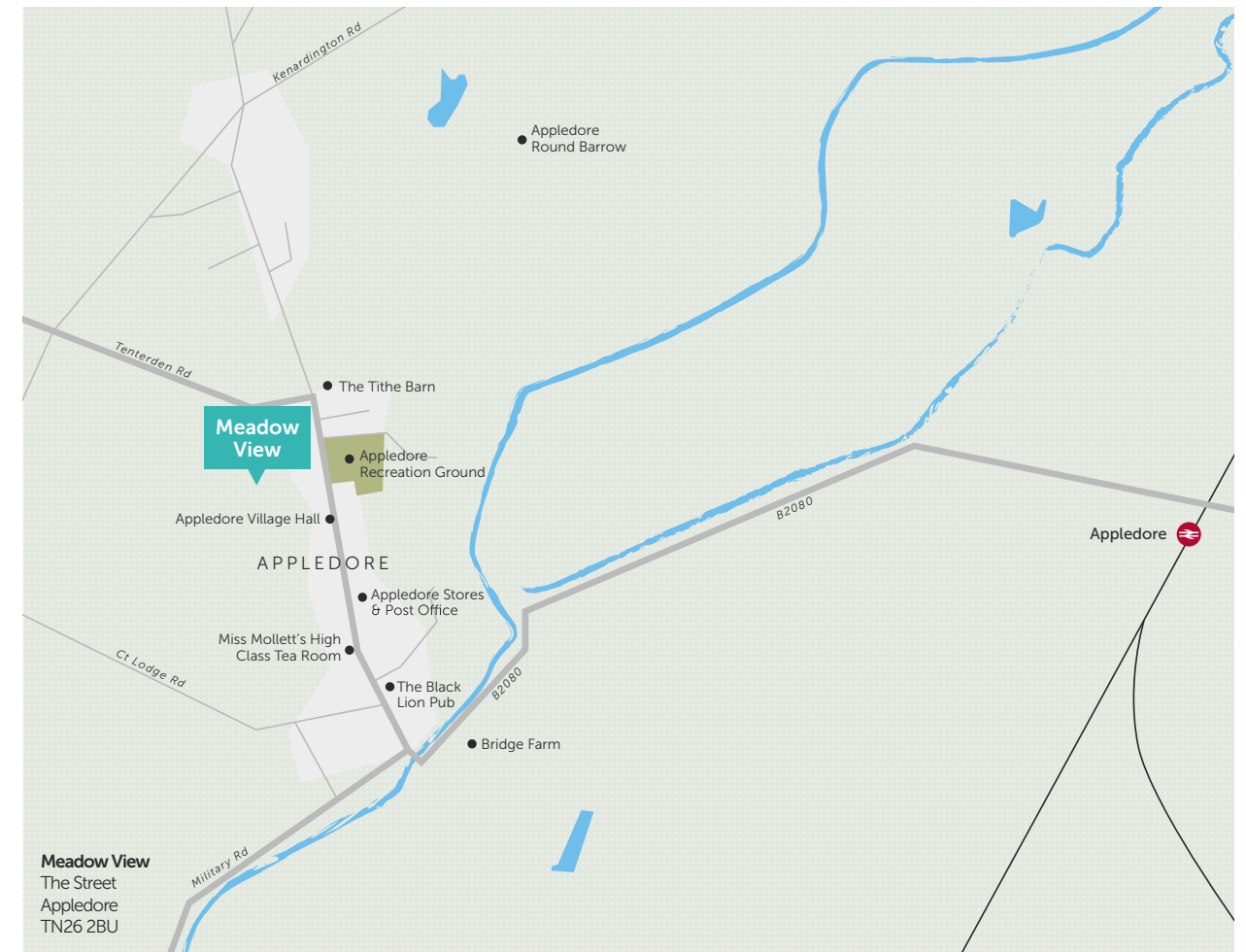
EXTERIOR

- Allocated parking
- Private gardens
- Surrounded by green spaces and enclosed development

WARRANTY

- All Love Living Homes are backed by a full 10-year ICW warranty to provide peace of mind, and help you relax knowing that there's help if you need it!

Location and local amenities



Reserving your chosen plot



There's nothing more exciting than taking that first step onto the home ownership ladder, and at Love Living Homes, we aim to make that journey as straightforward and enjoyable as possible.

To register your interest or to find out more information, please email us at

buy@lovelivinghomes.co.uk



love livinghomes

Love Living Homes is the trading name of

