

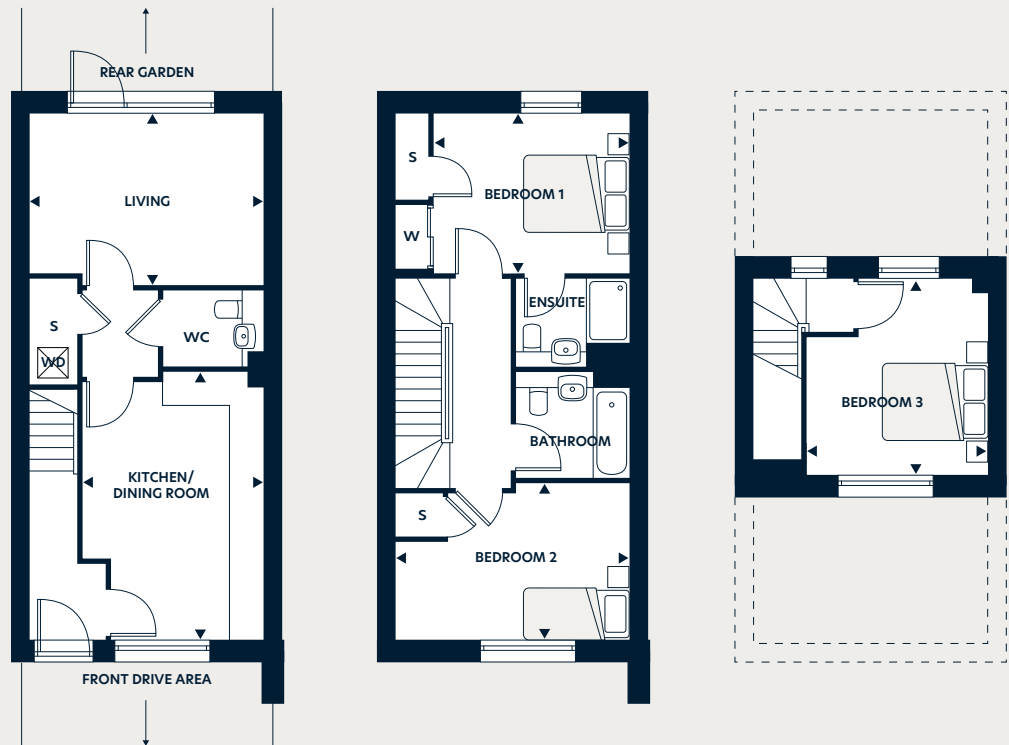
## Three bedroom house (The Bairstow)

### Boundary Mews

Plot 66

#### Floorplan key

W Wardrobe  
 S Storage  
 WD Washer/Dryer



#### Locator key BOUNDARY MEWS



Dimensions	m	ft
Living	3.26 x 4.46	10'8" x 14'7"
Kitchen/Dining	3.41 x 5.09	11'2" x 16'8"
Bedroom 1	3.04 x 4.46	9'11" x 14'7"
Ensuite	1.67 x 2.17	5'5" x 7'1"
Bedroom 2	2.97 x 4.45	9'8" x 14'7"
Bedroom 3	3.46 x 3.72	11'4" x 12'2"
Bathroom	2.02 x 2.17	6'7" x 7'1"
<b>Total Internal Area</b>	<b>106m<sup>2</sup></b>	<b>1141ft<sup>2</sup></b>
Front Drive Area	4.83 x 7.08	15'10" x 23'2"
Rear Garden	4.83 x 15.67	15'10" x 51'4"

The floorplans are intended to give a general indication of the proposed floorplan layout. They are not drawn to scale and are not intended to form part of any offer, warranty or representation. Measurements are approximate and are given as a guide and as such must not be relied on as a statement or representation of fact. Do not use these measurements for carpets, appliance spaces or items of furniture. Kitchen, bathroom and utility layouts and door swings may differ to build and specific plot sizes and layouts may vary within the same unit type. Hyde reserves the right to make changes to these plans prior to exchange of contracts. For further information regarding specific individual plots, please ask your Sales Consultant.

[hydenewhomes.co.uk](https://www.hydenewhomes.co.uk)

020 8297 7603

Hyde New Homes

Boundary Mews | **Parkside Triangle**