



VIVID AT

ALBANY PARK

CHURCH CROOKHAM, HAMPSHIRE

HOW IT WORKS

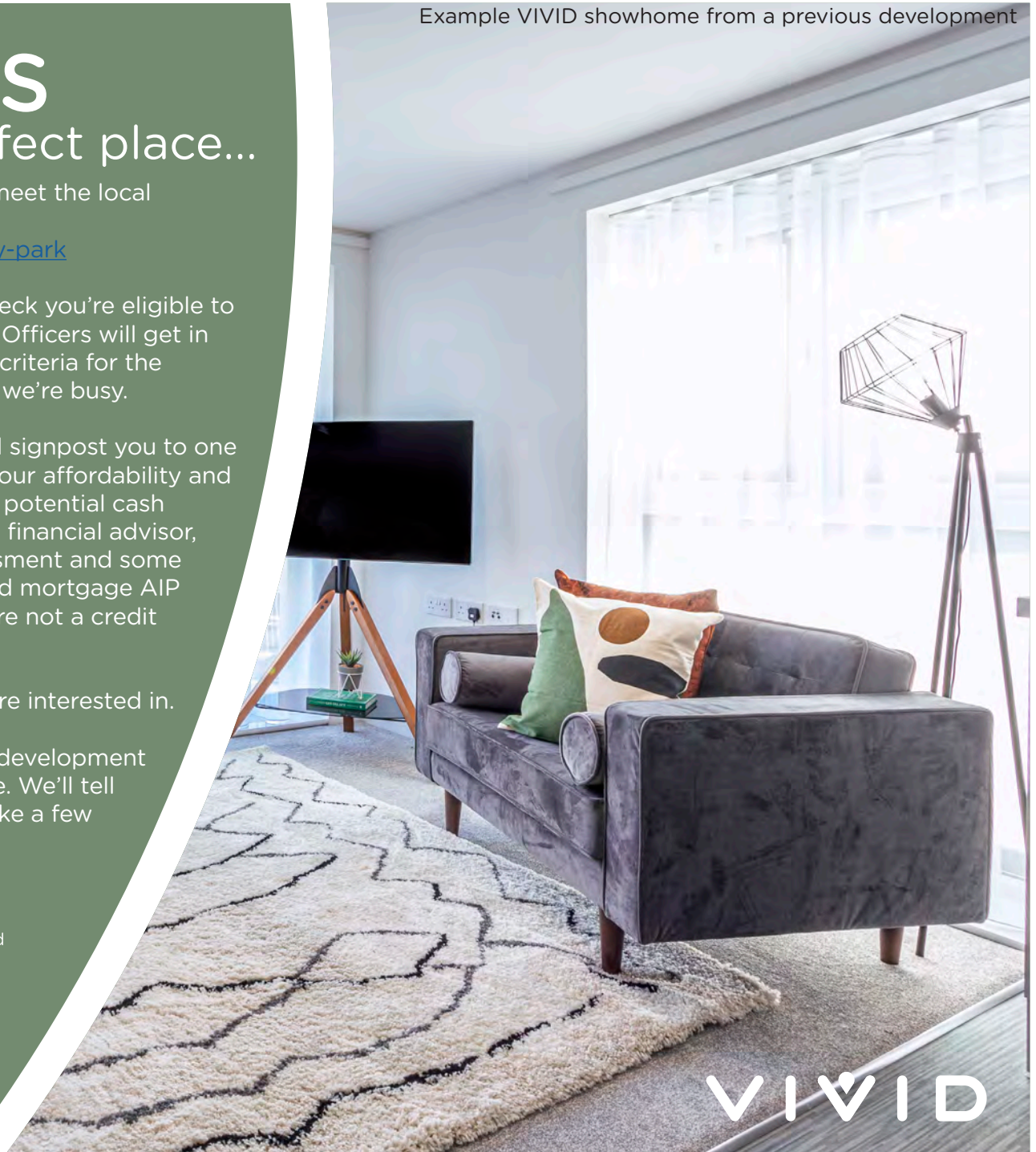
Helping you find your perfect place...

- 1** View the listing for Albany Park, check if you meet the local connection criteria, then apply online:
<https://yourvividhome.co.uk/properties/albany-park>
- 2** Once we've received your application, we'll check you're eligible to apply for Shared Ownership. One of our Sales Officers will get in touch to let you know if you meet the priority criteria for the development, this can take a few weeks when we're busy.
- 3** If we're able to progress your application, we'll signpost you to one of our panel financial advisors* to talk about your affordability and the share you could purchase (even if you're a potential cash buyer). If you choose to use them or your own financial advisor, they'll send us your completed financial assessment and some more documents like proof of your deposit and mortgage AIP (Agreement in Principle). Please note, VIVID are not a credit broker.
- 4** We'll also ask you to email us which plots you're interested in.
- 5** We'll review all the documents and check the development criteria to see if we're able to offer you a home. We'll tell you as soon as we can, sometimes this may take a few weeks whilst we complete this process

*There are many financial advisors you could use to understand and apply for a Shared Ownership mortgage on your behalf. Every financial advisor has a duty to find you the mortgage that's best for you. They'll keep in mind VIVID's timescales for any mortgage that is offered to you, as it needs to meet our sales timeframe. We're signposting you to our panel Financial Advisors as they are experts in Shared Ownership and know the VIVID process too. They'll complete your affordability checks free of charge. If you're offered a home and apply for a mortgage with them there will be a £250 fee, please check with your panel financial advisor when this will be payable. If you choose to use another Financial Advisor that's absolutely fine, and your choice won't impact any VIVID decision on whether you buy a home from us.

Please note; VIVID is not a credit broker.

Example VIVID showhome from a previous development



VIVID

TRUST VIVID

Always got a prompt response to my emails. I was kept informed throughout the process. Lovely staff.

Kara - Shared Owner

The service from start to finish was amazing. Fantastic communication, things happened when they said they would and the whole process was so easy.

Nicola - Shared Owner

VIVID have been outstanding from the very beginning of my application - they professionally supported me through the whole process explained every step and made me feel part of the VIVID family, I can't stress how amazing all the VIVID team have been - thank you.

Susan - Shared Owner

Example VIVID showhome from a previous development



VIVID

Virtual Staging of a Bedroom on previous phase at Albany Park

THE DEVELOPMENT

New 2 & 3 bedroom homes now available in Church Crookham!

Our homes at Albany Park are in Church Crookham, a pretty semi-rural village, not far from Fleet in Hampshire. This flourishing village is known to have a great community spirit and it's a safe place to live too. Surrounded by protected areas of natural beauty, yet only a few miles from the bustling towns of Fleet, Aldershot and Farnham, this area has a lot to offer for people of all ages.

For those who enjoy the outdoors, Caesars camp is just 4 minutes' drive and well worth a visit for a pretty walk.



VIVID

THE LOCATION

A desirable location in easy reach of other places further afield

Church Crookham has a few local amenities to hand including a Co-operative supermarket, a post office, a choice of good country pubs, there's an independent bakery only a short drive away and a dentist surgery. For more choice Fleet is just 9 minutes* drive, here you'll find many restaurants, shops, a community cinema and there's Hart Leisure Centre too.

Commuters can travel from Fleet train station to London Waterloo in just under an hour. By car, Church Crookham is close to the A31 connecting residents to Farnham, Alton and Winchester, alternatively you can connect to the M3 towards London, or south towards Winchester.



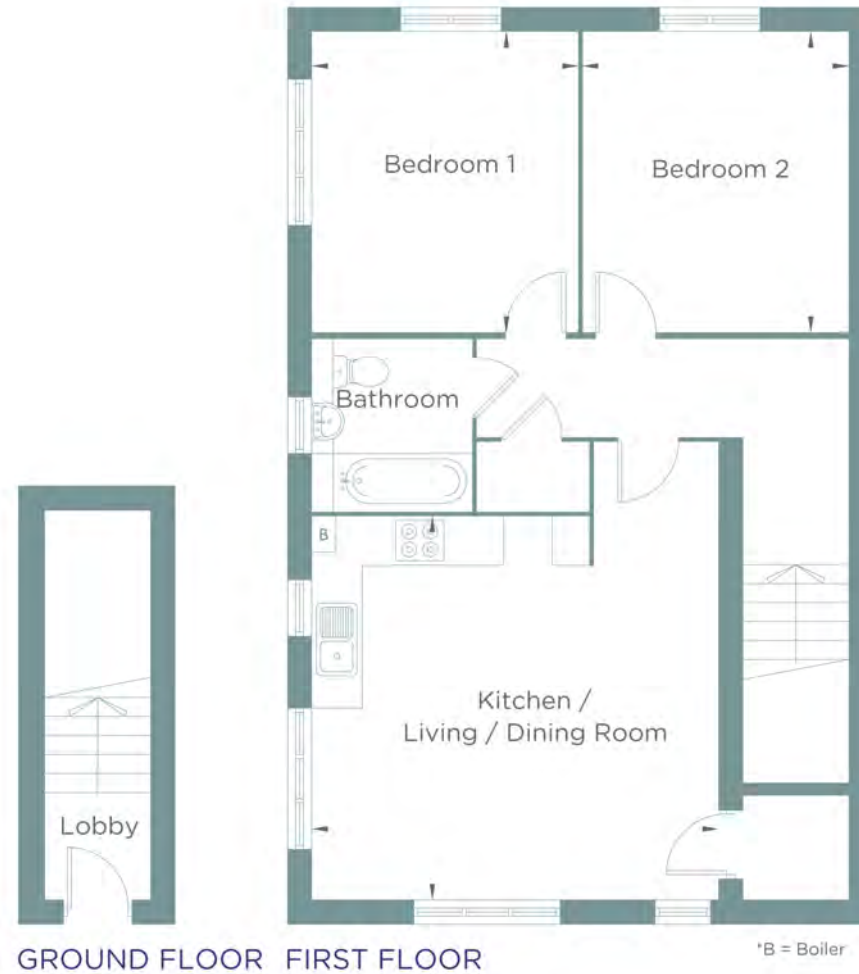
VIVID

Albany Park

Plots 247 269
2 BEDROOM MAISONNETTE

FIRST FLOOR

Kitchen / Living / Dining Room	5.03m x 4.75m (16'-6" x 15'-7")
Bedroom 1	3.72m x 3.30m (12'-2" x 10'-10")
Bedroom 2	3.72m x 3.30m (12'-2" x 10'-10")



Please note floorplans are not to scale and are indicative only, total areas are provided as gross internal areas and are subject to variance and these plans do not act as part of a legally binding contract, warranty or guarantee. These plans may not be to scale and dimensions may vary during the build programme. It is common for fixtures and fittings to change during the build programme, for example boilers. Location of windows, doors, kitchen units and appliances may differ. Doors may swing in to the opposite direction to that shown on selected houses. Dimensions which are taken from the indicated points of measurement are for guidance only and are not intended to be used to calculate the space needed for specific pieces of furniture. If your home is set within a terrace row, the position of the windows may vary from those shown on this plan. The property may also be a handed (mirrored) version of the layout shown here. We advise that you do not order any furniture based on these indicative plans, please wait until you can measure up fully, inside the property. Please speak to a member of our sales team about when you can gain access to take measurements. We will not be responsible for costs incurred due to ordering incorrect furniture. VIVID Housing Limited is registered in England and Wales as a registered society under the Co-operative and Community Benefit Societies Act 2014 under number 7544 with exempt charity status and as a registered provider of social housing with the Homes and Communities Agency under number 4850. Our registered office is at Peninsular House, Wharf Road, Portsmouth, Hampshire PO2 8HB. All information correct at time of creation - October 2024.

VIVID

Albany Park

Plots 246 247
2 BEDROOM MAISONNETTE



PLOT 247 - FIRST FLOOR
FRONT ELEVATION

PLOT 246 - GROUND FLOOR
SIDE ELEVATION



PLOT 247 - FIRST FLOOR
SIDE ELEVATION

PLOT 246 - GROUND FLOOR
FRONT ELEVATION



PLOT 247 - FIRST FLOOR
REAR ELEVATION

PLOT 246 - GROUND FLOOR
SIDE ELEVATION



PLOT 247 - FIRST FLOOR
SIDE ELEVATION

PLOT 246 - GROUND FLOOR
REAR ELEVATION

Please note floorplans are not to scale and are indicative only, total areas are provided as gross internal areas and are subject to variance and these plans do not act as part of a legally binding contract, warranty or guarantee. These plans may not be to scale and dimensions may vary during the build programme. It is common for fixtures and fittings to change during the build programme, for example boilers. Location of windows, doors, kitchen units and appliances may differ. Doors may swing in to the opposite direction to that shown on selected houses. Dimensions, which are taken from the indicated points of measurement are for guidance only and are not intended to be used to calculate the space needed for specific pieces of furniture. If your home is set within a terrace row, the position of the windows may vary from those shown on this plan. The property may also be a handed (mirrored) version of the layout shown here. We advise that you do not order any furniture based on these indicative plans, please wait until you can measure up fully, inside the property. Please speak to a member of our sales team about when you can gain access to take measurements. We will not be responsible for costs incurred due to ordering incorrect furniture. VIVID Housing Limited is registered in England and Wales as a registered society under the Co-operative and Community Benefit Societies Act 2014 under number 7544 with exempt charity status and as a registered provider of social housing with the Homes and Communities Agency under number 4850. Our registered office is at Peninsular House, Wharf Road, Portsmouth, Hampshire, PO2 8HB. All information correct at time of creation - October 2024.

VIVID

Albany Park

Plots 268 269
2 BEDROOM MAISONNETTE



PLOT 269 - FIRST FLOOR
FRONT ELEVATION

PLOT 268 - GROUND FLOOR
SIDE ELEVATION



PLOTS 269 - FIRST FLOOR
SIDE ELEVATION

PLOT 268 - GROUND FLOOR
FRONT ELEVATION



PLOT 269 - FIRST FLOOR
REAR ELEVATION

PLOT 268 - GROUND FLOOR
SIDE ELEVATION



PLOT 269 - FIRST FLOOR
SIDE ELEVATION

PLOT 268 - GROUND FLOOR
REAR ELEVATION

Please note floorplans are not to scale and are indicative only, total areas are provided as gross internal areas and are subject to variance and these plans do not act as part of a legally binding contract, warranty or guarantee. These plans may not be to scale and dimensions may vary during the build programme, it is common for fixtures and fittings to change during the build programme, for example boilers. Location of windows, doors, kitchen units and appliances may differ. Doors may swing in to the opposite direction to that shown on selected houses. Dimensions, which are taken from the indicated points of measurement are for guidance only and are not intended to be used to calculate the space needed for specific pieces of furniture. If your home is set within a terrace row, the position of the windows may vary from those shown on this plan. The property may also be a handed (mirrored) version of the layout shown here. We advise that you do not order any furniture based on these indicative plans, please wait until you can measure up fully, inside the property. Please speak to a member of our sales team about when you can gain access to take measurements. We will not be responsible for costs incurred due to ordering incorrect furniture. VIVID Housing Limited is registered in England and Wales as a registered society under the Co-operative and Community Benefit Societies Act 2014 under number 7544 with exempt charity status and as a registered provider of social housing with the Homes and Communities Agency under number 4850. Our registered office is at Peninsular House, Wharf Road, Portsmouth, Hampshire, PO2 8HB. All information correct at time of creation - October 2024.

VIVID

Albany Park

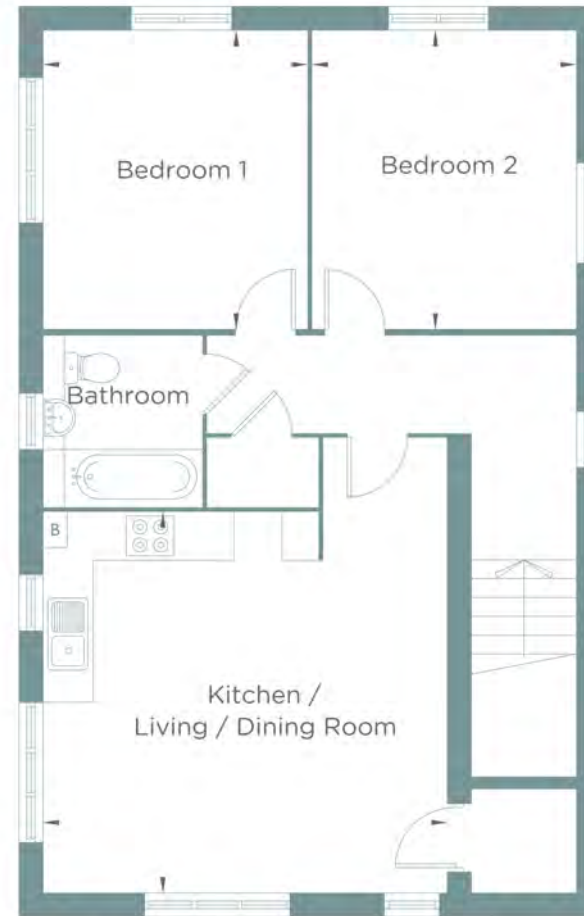
Plot 258
2 BEDROOM MAISONNETTE

FIRST FLOOR

Kitchen / Living / Dining Room	5.03m x 4.75m (16'-6" x 15'-7")
Bedroom 1	3.72m x 3.30m (12'-2" x 10'-10")
Bedroom 2	3.72m x 3.30m (12'-2" x 10'-10")



GROUND FLOOR



FIRST FLOOR

*B = Boiler

Please note floorplans are not to scale and are indicative only, total areas are provided as gross internal areas and are subject to variance and these plans do not act as part of a legally binding contract, warranty or guarantee. These plans may not be to scale and dimensions may vary during the build programme. It is common for fixtures and fittings to change during the build programme, for example boilers. Location of windows, doors, kitchen units and appliances may differ. Doors may swing in to the opposite direction to that shown on selected houses. Dimensions which are taken from the indicated points of measurement are for guidance only and are not intended to be used to calculate the space needed for specific pieces of furniture. If your home is set within a terrace row, the position of the windows may vary from those shown on this plan. The property may also be a handed (mirrored) version of the layout shown here. We advise that you do not order any furniture based on these indicative plans, please wait until you can measure up fully, inside the property. Please speak to a member of our sales team about when you can gain access to take measurements. We will not be responsible for costs incurred due to ordering incorrect furniture. VIVID Housing Limited is registered in England and Wales as a registered society under the Co-operative and Community Benefit Societies Act 2014 under number 7544 with exempt charity status and as a registered provider of social housing with the Homes and Communities Agency under number 4850. Our registered office is at Peninsular House, Wharf Road, Portsmouth, Hampshire, PO2 8HB. All information correct at time of creation - October 2024.

VIVID

Albany Park

Plots 257 258
2 BEDROOM MAISONNETTE



PLOT 258 - FIRST FLOOR
FRONT ELEVATION

PLOT 257 - GROUND FLOOR
SIDE ELEVATION



PLOT 258 - FIRST FLOOR
SIDE ELEVATION

PLOT 257 - GROUND FLOOR
FRONT ELEVATION



PLOT 258 - FIRST FLOOR
REAR ELEVATION

PLOT 257 - GROUND FLOOR
SIDE ELEVATION



PLOT 258 - FIRST FLOOR
SIDE ELEVATION

PLOT 257 - GROUND FLOOR
REAR ELEVATION

Please note floorplans are not to scale and are indicative only, total areas are provided as gross internal areas and are subject to variance and these plans do not act as part of a legally binding contract, warranty or guarantee. These plans may not be to scale and dimensions may vary during the build programme, it is common for fixtures and fittings to change during the build programme, for example boilers. Location of windows, doors, kitchen units and appliances may differ. Doors may swing in to the opposite direction to that shown on selected houses. Dimensions, which are taken from the indicated points of measurement are for guidance only and are not intended to be used to calculate the space needed for specific pieces of furniture. If your home is set within a terrace row, the position of the windows may vary from those shown on this plan. The property may also be a handed (mirrored) version of the layout shown here. We advise that you do not order any furniture based on these indicative plans, please wait until you can measure up fully, inside the property. Please speak to a member of our sales team about when you can gain access to take measurements. We will not be responsible for costs incurred due to ordering incorrect furniture. VIVID Housing Limited is registered in England and Wales as a registered society under the Co-operative and Community Benefit Societies Act 2014 under number 7544 with exempt charity status and as a registered provider of social housing with the Homes and Communities Agency under number 4850. Our registered office is at Peninsular House, Wharf Road, Portsmouth, Hampshire, PO2 8HB. All information correct at time of creation - October 2024.

VIVID

Albany Park

Plot 279
3 BEDROOM HOUSE

GROUND FLOOR

Living / Dining Room 5.25m x 4.94m
(17'-3" x 16'-2")

Kitchen 4.15m x 2.93m
(13'-7" x 9'-7")

FIRST FLOOR

Bedroom 1 4.88m x 2.82m
(16'-0" x 9'-3")

Bedroom 2 4.21m x 2.82m
(13'-7" x 9'-3")

Bedroom 3 3.36m x 2.37m
(11'-0" x 7'-9")



Please note floorplans are not to scale and are indicative only, total areas are provided as gross internal areas and are subject to variance and these plans do not act as part of a legally binding contract, warranty or guarantee. These plans may not be to scale and dimensions may vary during the build programme. It is common for fixtures and fittings to change during the build programme, for example boilers. Location of windows, doors, kitchen units and appliances may differ. Doors may swing in the opposite direction to that shown on selected houses. Dimensions, which are taken from the indicated points of measurement are for guidance only and are not intended to be used to calculate the space needed for specific pieces of furniture. If your home is set within a terrace row, the position of the windows may vary from those shown on this plan. The property may also be a handed (mirrored) version of the layout shown here. We advise that you do not order any furniture based on these indicative plans, please wait until you can measure up fully, inside the property. Please speak to a member of our sales team about when you can gain access to take measurements. We will not be responsible for costs incurred due to ordering incorrect furniture. VIVID Housing Limited is registered in England and Wales as a registered society under the Co-operative and Community Benefit Societies Act 2014 under number 7544 with exempt charity status and as a registered provider of social housing with the Homes and Communities Agency under number 14850. Our registered office is at Peninsular House, Wharf Road, Portsmouth, Hampshire, PO2 8HB. All information correct at time of creation - October 2024.

VIVID

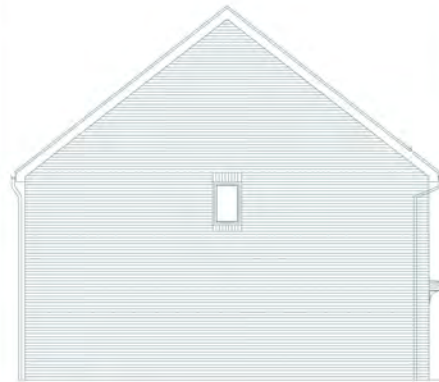
Albany Park

Plots 278, 279
3 BEDROOM HOUSE



PLOT 278
FRONT ELEVATION

PLOT 279
FRONT ELEVATION



PLOT 278
SIDE ELEVATION



PLOT 279
REAR ELEVATION

PLOT 278
REAR ELEVATION



PLOT 279
SIDE ELEVATION

Please note floorplans are not to scale and are indicative only, total areas are provided as gross internal areas and are subject to variance and these plans do not act as part of a legally binding contract, warranty or guarantee. These plans may not be to scale and dimensions may vary during the build programme. It is common for fixtures and fittings to change during the build programme, for example boilers. Location of windows, doors, kitchen units and appliances may differ. Doors may swing in to the opposite direction to that shown on selected houses. Dimensions, which are taken from the indicated points of measurement are for guidance only and are not intended to be used to calculate the space needed for specific pieces of furniture. If your home is set within a terrace row, the position of the windows may vary from those shown on this plan. The property may also be a handed (mirrored) version of the layout shown here. We advise that you do not order any furniture based on these indicative plans; please wait until you can measure up fully, inside the property. Please speak to a member of our sales team about when you can gain access to take measurements. We will not be responsible for costs incurred due to ordering incorrect furniture. VIVID Housing Limited is registered in England and Wales as a registered society under the Co-operative and Community Benefit Societies Act 2014 under number 7544 with exempt charity status and as a registered provider of social housing with the Homes and Communities Agency under number 4850. Our registered office is at Peninsular House, Wharf Road, Portsmouth, Hampshire, PO2 8HB. All information correct at time of creation - October 2024.

VIVID

Albany Park

Plot 281

2 BEDROOM MAISONETTE

FIRST FLOOR

Kitchen / Living / Dining Room	5.03m x 4.75m (16'-6" x 15'-7")
Bedroom 1	3.72m x 3.30m (12'-2" x 10'-10")
Bedroom 2	3.72m x 3.30m (12'-2" x 10'-10")



Please note floorplans are not to scale and are indicative only, total areas are provided as gross internal areas and are subject to variance and these plans do not act as part of a legally binding contract, warranty or guarantee. These plans may not be to scale and dimensions may vary during the build programme. It is common for fixtures and fittings to change during the build programme, for example boilers. Location of windows, doors, kitchen units and appliances may differ. Doors may swing in the opposite direction to that shown on selected houses. Dimensions, which are taken from the indicated points of measurement are for guidance only and are not intended to be used to calculate the space needed for specific pieces of furniture. If your home is set within a terrace row, the position of the windows may vary from those shown on this plan. The property may also be a handed (mirrored) version of the layout shown here. We advise that you do not order any furniture based on these indicative plans, please wait until you can measure up fully, inside the property. Please speak to a member of our sales team about when you can gain access to take measurements. We will not be responsible for costs incurred due to ordering incorrect furniture. VIVID Housing Limited is registered in England and Wales as a registered society under the Co-operative and Community Benefit Societies Act 2014 under number 7544 with exempt charity status and as a registered provider of social housing with the Homes and Communities Agency under number 14850. Our registered office is at Peninsular House, Wharf Road, Portsmouth, Hampshire, PO2 9HB. All information correct at time of creation - October 2024.

VIVID

Albany Park

Plots 280 281
2 BEDROOM MAISONNETTE



PLOT 281 - FIRST FLOOR
FRONT ELEVATION



PLOT 281 - FIRST FLOOR
SIDE ELEVATION



PLOT 281 - FIRST FLOOR
REAR ELEVATION



PLOT 281 - FIRST FLOOR
SIDE ELEVATION

PLOT 280 - GROUND FLOOR
SIDE ELEVATION

PLOT 280 - GROUND FLOOR
FRONT ELEVATION

PLOT 280 - GROUND FLOOR
SIDE ELEVATION

PLOT 280 - GROUND FLOOR
REAR ELEVATION

Please note floorplans are not to scale and are indicative only, total areas are provided as gross internal areas and are subject to variance and these plans do not act as part of a legally binding contract, warranty or guarantee. These plans may not be to scale and dimensions may vary during the build programme. It is common for fixtures and fittings to change during the build programme, for example boilers. Location of windows, doors, kitchen units and appliances may differ. Doors may swing in to the opposite direction to that shown on selected houses. Dimensions, which are taken from the indicated points of measurement are for guidance only and are not intended to be used to calculate the space needed for specific pieces of furniture. If your home is set within a terrace row, the position of the windows may vary from those shown on this plan. The property may also be a handed (mirrored) version of the layout shown here. We advise that you do not order any furniture based on these indicative plans; please wait until you can measure up fully, inside the property. Please speak to a member of our sales team about when you can gain access to take measurements. We will not be responsible for costs incurred due to ordering incorrect furniture. VIVID Housing Limited is registered in England and Wales as a registered society under the Co-operative and Community Benefit Societies Act 2014 under number 7544 with exempt charity status and as a registered provider of social housing with the Homes and Communities Agency under number 4850. Our registered office is at Peninsular House, Wharf Road, Portsmouth, Hampshire, PO2 8HB. All information correct at time of creation - October 2024.

VIVID

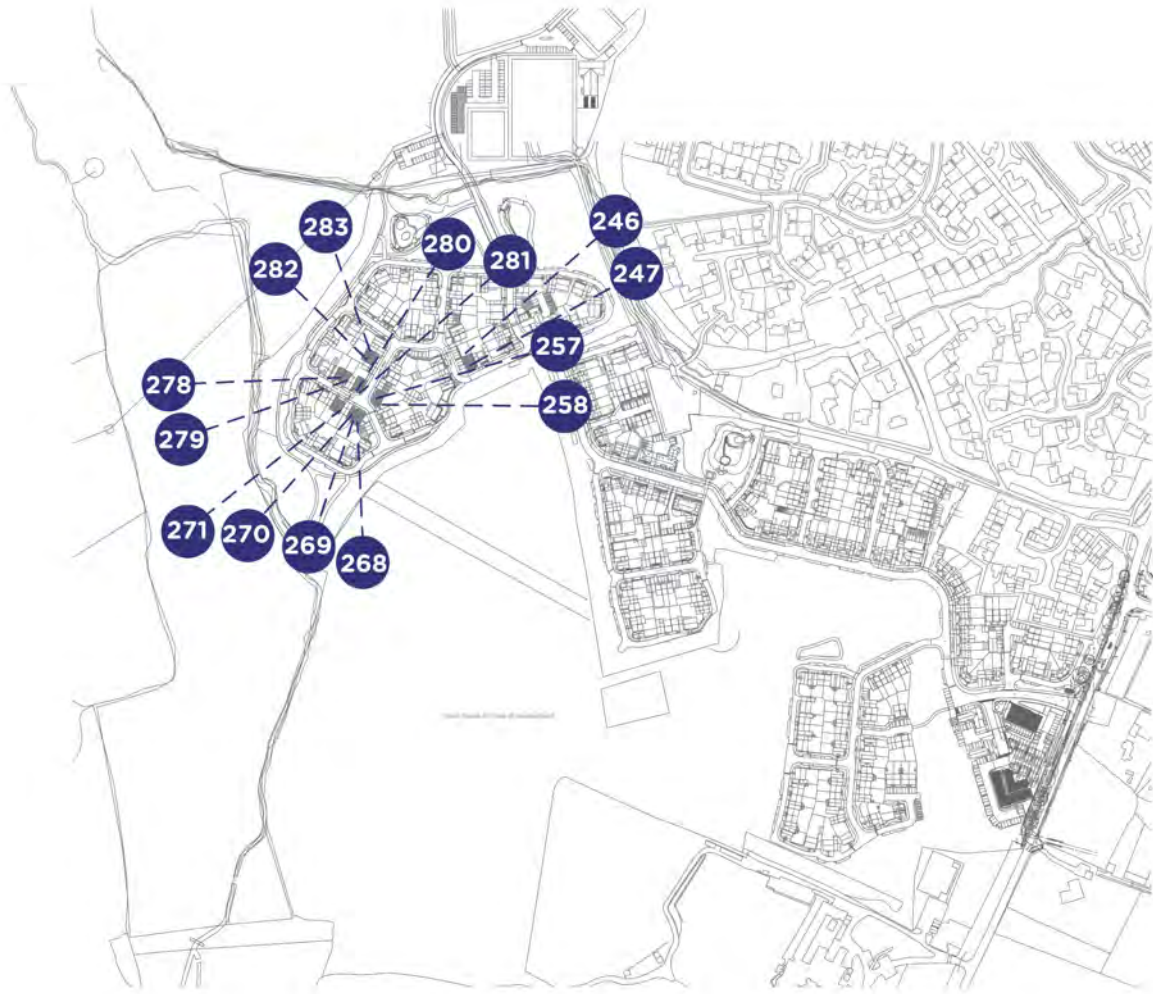
Albany Park



Please note floorplans are not to scale and are indicative only, total areas are provided as gross internal areas and are subject to variance and these plans do not act as part of a legally binding contract, warranty or guarantee. These plans may not be to scale and dimensions may vary during the build programme. It is common for fixtures and fittings to change during the build programme, for example boilers. Location of windows, doors, kitchen units and appliances may differ. Doors may swing in to the opposite direction to that shown on selected houses. Dimensions, which are taken from the indicated points of measurement are for guidance only and are not intended to be used to calculate the space needed for specific pieces of furniture. If your home is not within a terrace row, the position of the windows may vary from those shown on this plan. The property may also be a handed (mirrored) version of the layout shown here. We advise that you do not order any furniture based on these indicative plans, please wait until you can measure up fully, inside the property. Please speak to a member of our sales team about when you can gain access to take measurements. We will not be responsible for costs incurred due to ordering incorrect furniture. VIVID Housing Limited is registered in England and Wales as a registered society under the Co-operative and Community Benefit Societies Act 2014 under number 7544 with exempt charity status and as a registered provider of social housing with the Homes and Communities Agency under number 4850. Our registered office is at Peninsular House, Wharf Road, Portsmouth, Hampshire, PO2 8HB. All information correct at time of creation - October 2024.



Albany Park



Please note floorplans are not to scale and are indicative only. Total areas are provided as gross internal areas and are subject to variance and these plans do not act as part of a legally binding contract, warranty or guarantee. These plans may not be to scale and dimensions may vary during the build programme. It is common for fixtures and fittings to change during the build programme, for example boilers. Location of windows, doors, kitchen units and appliances may differ. Doors may swing in to the opposite direction to that shown on selected houses. Dimensions, which are taken from the indicated points of measurement are for guidance only and are not intended to be used to calculate the space needed for specific pieces of furniture. If your home is not within a terrace row, the position of the windows may vary from those shown on the plan. The property may also be a handed (mirror) version of the layout shown here. We advise that you do not order any furniture based on these indicative plans, please wait until you can measure up fully, inside the property. Please speak to a member of our sales team about when you can gain access to take measurements. We will not be responsible for costs incurred due to ordering incorrect furniture. VIVID Housing Limited is registered in England and Wales as a registered society under the Co-operative and Community Benefit Societies Act 2014 under number 7544 with exempt charity status and as a registered provider of social housing with the Homes and Communities Agency under number 4850. Our registered office is at Peninsular House, Wharf Road, Portsmouth, Hampshire, PO2 8HB. All information correct at time of creation - October 2024.

VIVID

SPECIFICATION

Kitchen

- Symphony New York Dusk kitchen units
- Carbon Steel Worktops
- Chrome chunky bridge handles

Other Internals

- Carpet in non-wet areas is Abingdon Quartz 20
- Vinyl is Comfytex Carmague 522
- Tiles are Porcelanosa Japan Marine 25 x 44.3cm tiles with Cemento Grout

Other

- Turfed Gardens
- Gas Combi Boiler
- Plots 246, 247, 257, 258, 268 & 281 feature two parking spaces[^] (Right to Use)
- Plots 269 features one parking space[^] (Right to Use)
- Plots 270, 271, 272, 278, 279 282 & 283 feature two parking spaces[^] (Demised)

[^]parking spaces include EV charging points, please speak with your Sales Officer for more information

Images shown are indicative and do not represent the final specification. VIVID reserves the right to change items in the specification dependent on availability, at any moment, and without prior notice during the build completion.



VIVID

SERVICES & ADDITIONAL INFO

- Utilities - Mains Gas, Electric, Water (Metered) & Waste Water
- Broadband - OFNL <https://www.ofnl.co.uk/>
- Broadband Coverage Checker - <https://checker.ofcom.org.uk/en-gb/broadband-coverage>
- Mobile Coverage Checker - <https://checker.ofcom.org.uk/en-gb/mobile-coverage>
- Solar Panels - Current plots feature solar panels
- Construction method - Traditional
- Planning - View the local website for more information <https://www.hart.gov.uk/>

Please Note: Newbuild property specification and additional info is not always available, also newbuild property addresses may not be active immediately with all service providers. Please contact the team if you have additional queries.



VIVID

WHO WE ARE

We're a customer-focused provider of affordable homes and the 4th largest builder amongst UK housing associations. We have an ambitious development programme, together with providing vital support services to our communities.

BUYING MORE SHARES

Shared Ownership enables you to buy more shares in your home over time, from an additional 10% to outright purchase (in most cases). We call this staircasing.

AFTER YOU MOVE IN

You can have confidence buying a VIVID home as our team are here to help you if you have any unforeseen issues or defects in your new home.



VIVID

SO HOW CAN YOU ENJOY
ALL THIS FOR JUST £84,375?*

ONLY WITH VIVID SHARED OWNERSHIP

Shared ownership lets you buy a share of your new home. You can start at just 25% with a 5% deposit. You pay rent on the rest. If you buy a 25% share on one of these houses, you can expect the rent to be around £580.08 per month*. In the future, as your financial situation changes, you can buy greater shares if you want to. This is called staircasing. As your share goes up, your rent comes down. If you'd like to get a better understanding of how much buying a brand new home at Albany Park would cost you.

Visit www.yourvividhome.co.uk to see all of our homes on offer with Shared Ownership!

*Prices are based on buying a 25% share in a 2 bedroom maisonette with a FMW of £337,500, shares start from £84,375 with a monthly rent of example of £580.08 (Based on unsold equity at 2.75% of value). Terms and conditions apply.



VIVID

PRICELIST AND MORE INFORMATION

Property type	Plot	Address	100% Value*	Eg: FROM minimum 25% share (which you must raise mortgage & deposit for)	Eg: Initial monthly rent pcm FROM (based on 75% share you don't own)	Estimated monthly Service Charge	Projected handover date*	Lease Length	Council Tax Band	Important Information
2 Bedroom First Floor Maisonette	247	5 Linnet Way, Church Crookham, Hampshire, GU52 0AY	£337,500	£84,375	£580.08	£32.28	April 2025	990 Years	TBC	Energy Info Key Info
2 Bedroom First Floor Maisonette	258	20 Linnet Way, Church Crookham, Hampshire, GU52 0AY	£337,500	£84,375	£580.08	£32.28	June 2025	990 Years	TBC	Energy Info Key Info
2 Bedroom First Floor Maisonette	269	25 Linnet Way, Church Crookham, Hampshire, GU52 0AY	£337,500	£84,375	£580.08	£32.28	June 2025	990 Years	TBC	Energy Info Key Info
3 Bedroom Semi Detached House	279	11 Deer Crescent, Church Crookham, Hampshire, GU52 0BE	£527,500	£131,875	£906.64	£27.95	June 2025	990 Years	TBC	Energy Info Key Info
2 Bedroom First Floor Maisonette	281	23 Linnet Way, Church Crookham, Hampshire, GU52 0AY	£337,500	£84,375	£580.08	£32.28	May 2025	990 Years	TBC	Energy Info Key Info

PRICELIST AND MORE INFORMATION

PLEASE NOTE THE FOLLOWING:

- Eligibility conditions apply.
- MOD Applicants will have priority followed by Applicants with one of the Local Connection criteria listed below:
 - Currently residing in or have previously resided in Hart District within the last 5 years
 - Employed and working in Hart District
 - Have a close family connection to Hart District (parents, grandparents, children and siblings) We may be required to discuss your application with the Local Authority
- Initial Rent is calculated from 2.75%
- MOD Applicants will have priority followed by first come, first served
- The 25% example above shows the minimum share available. Applicants will be means tested to confirm the share they purchase and are required to purchase the maximum affordable %.
- Successful applicants will have a maximum of 28 days ** to exchange contracts following VIVID's solicitor issuing the contract pack. You must then complete on the purchase within a maximum 5 days of either exchange of contracts or following handover from the developer.

*Prices & projected handover dates are for guidance only and are subject to change. Our newbuild Shared Ownership homes are valued by a RICS (Royal Institute Chartered Surveyor) surveyor which confirms the full market value for 3 months. Every 3 months we will have the homes revalued, to make sure they're in line with the current market. This means the price is non-negotiable. It also means the value of the homes could go up or down, so are subject to change.

If purchasing a property off-plan Handover dates are only projected and subject to change. Vivid will inform you of any changes to projected handover dates as and when received by the developer. Please note that we are not able to give you detailed information to the reasons for any extended delays due to confidentiality agreements within the contracts between vivid and the developer. By agreeing to reserve a property off-plan Vivid will not be responsible for any fees that you may incur due to delays in property completions.

** or if all legal paperwork and the mortgage offer is in you must complete the sale

The logo for VIVID, featuring the word "VIVID" in a bold, white, sans-serif font. The letter "V" is stylized with a heart shape inside its upper right curve.

NOW IT'S TIME TO APPLY

yourvividhome.co.uk/developments/albany-park

VIVID

VIVID Housing Limited is registered in England and Wales as a registered society under the Co-operative and Community Benefit Societies Act 2014 under number 7544 with exempt charity status and as a registered provider of social housing with the Regulator of Social Housing under number 4850. Our registered office is at Peninsular House, Wharf Road, Portsmouth, Hampshire, PO2 8HB. All information correct at time of creation – March 2025.