

Type 2B

1 bedroom apartment

Block A



Block B



Plots Floor

Block A

07 First

14 Second

Block B*

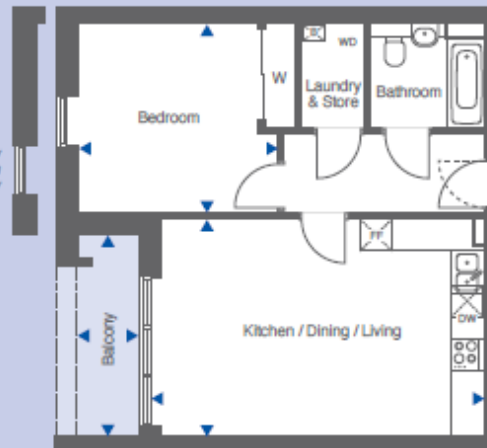
23 Ground

30 First

37 Second

* Plots are handed

Window position may vary



Entrance door may be handed

Gross Internal

Floor Area

52.8 m²

568 sq ft

Room	Metric	Imperial
Kitchen / Dining / Living	6.0 x 3.8 m	19'11" x 12'8"
Bedroom	3.7 x 3.6 m	12'5" x 11'11"
Balcony	3.6 x 1.1m	11'10" x 3'8"

FF	Fridge/Freezer
DW	Dishwasher
WD	Washer/Dryer
B	Boiler