

STATION VIEW

• DISS •



Computer generated image

THE ROYDON

3 Bedroom House

Plots 6, 7, 8, 9, 10, 17, 18

GROUND FLOOR

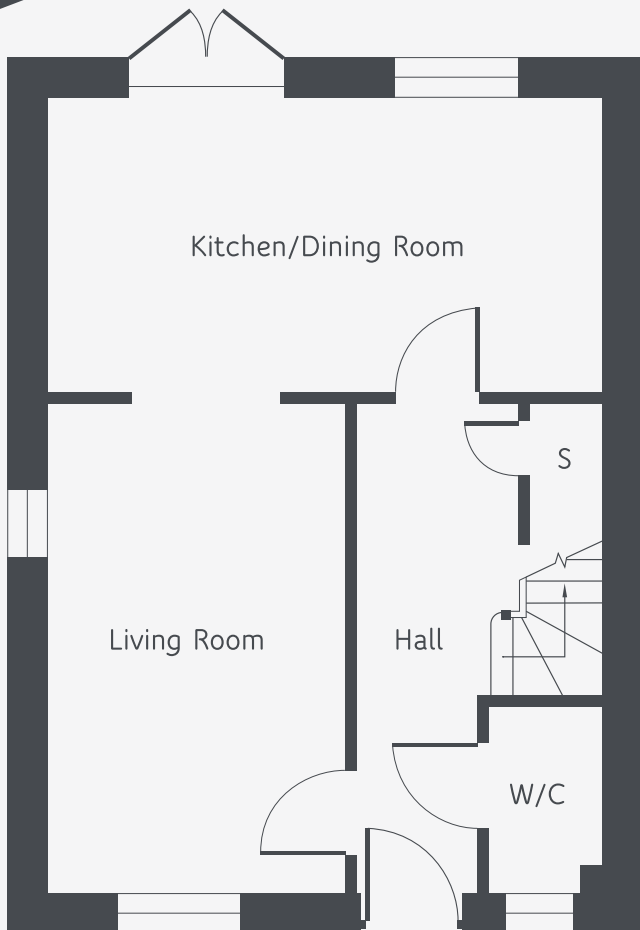
Kitchen/Dining Room	5.67m x 3.03m	18'7" x 9'11"
Living Room	5.01m x 3.07m	16'5" x 10'1"

FIRST FLOOR

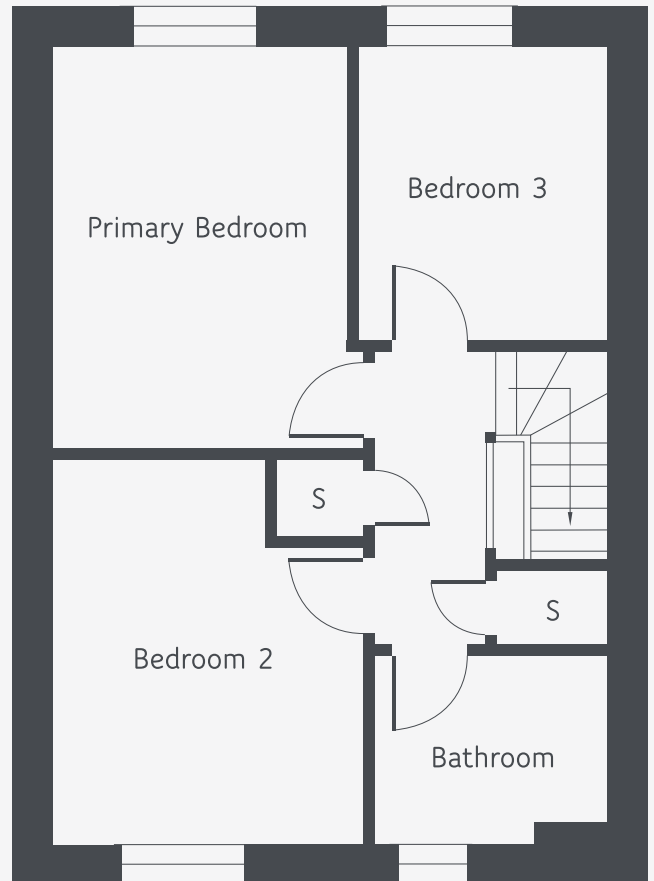
Primary Bedroom	4.13m x 3.21m	13'7" x 10'6"
Bedroom 2	3.91m x 3.21m	12'10" x 10'6"
Bedroom 3	3.04m x 2.37m	10'0" x 7'9"

STATION VIEW

• DISS •



GROUND FLOOR



FIRST FLOOR

Total floor space: 1,001 sq ft / 93 sq m

Floor plans and computer generated images are indicative only and external finished may vary.
Dimensions shown may vary within a tolerance of +/- 50mm and are not intended to be used for carpet sizes, appliance sizes or items of furniture.
Floor plans are not shown to scale.