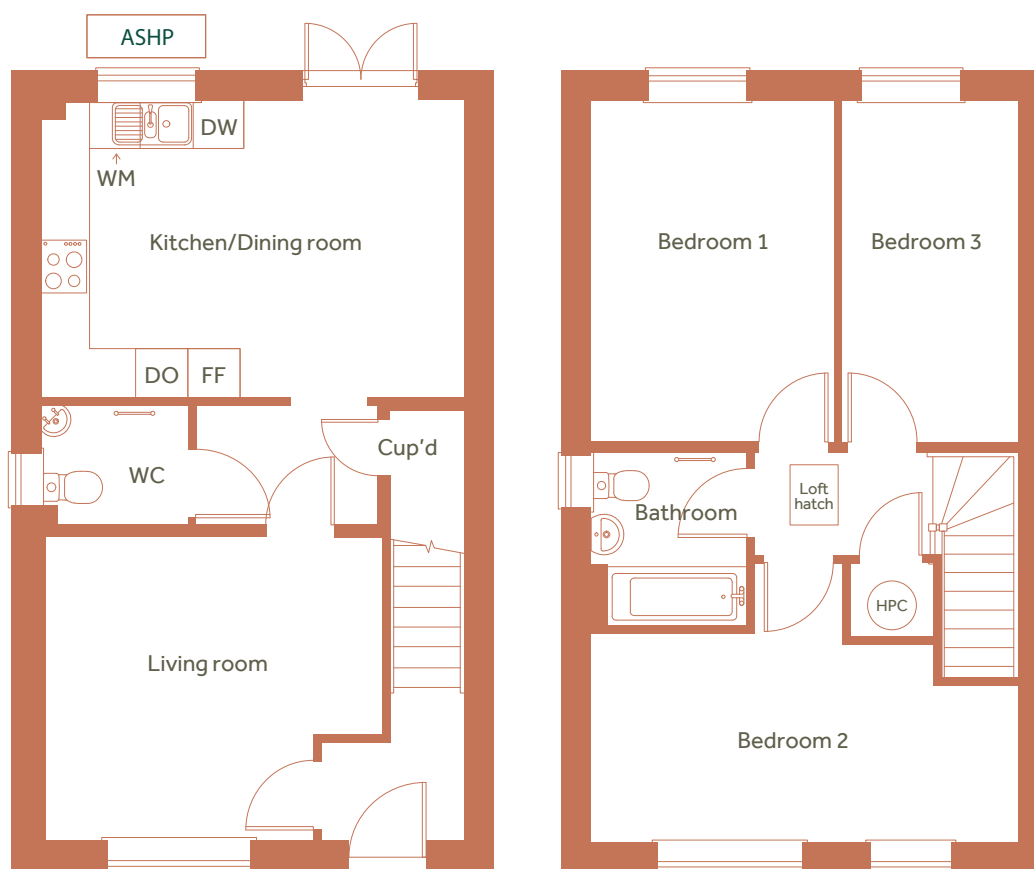


Three bedroom semi-detached house

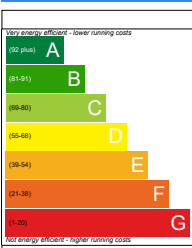
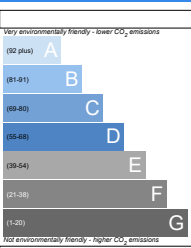
22 Arthur Blunden Road, West Malling



ASHP = Air source heat pump

Please speak to the sales executive for more information

Total Internal Area	93.5 sq m
Kitchen / Dining area	3.7m x 5.2m
Living	3.6m x 4.2m
Bedroom 1	4.1m x 2.9m
Bedroom 2	5.2m x 2.5 m
Bedroom 3	4.1m x 2.1m

Energy Efficiency Rating	Environmental Impact (CO ₂) Rating
 <p>Very energy efficient - lower running costs</p> <p>93</p> <p>EU Directive 2002/91/EC</p> <p>England</p>	 <p>Very environmentally friendly - lower CO₂ emissions</p> <p>91</p> <p>EU Directive 2002/91/EC</p> <p>England</p>

C = Cupboard, WC = Water Closet, HPC = Heat Pump Cylinder, FF = Fridge Freezer, DW = Dishwasher, WM = Washing Machine DO = Integrated double oven

Floor plans shown are indicative only. All room sizes are approximate with maximum dimensions of finished items of furniture. Room layouts may be subject to minor modifications. Furniture, kitchen and bathroom layouts shown are indicative only. Measurement at widest point.

Three bedroom semi-detached house

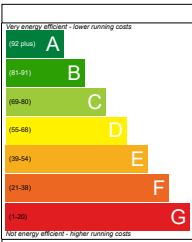
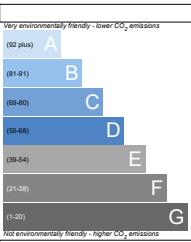
20 Arthur Blunden Road, West Malling



ASHP = Air source heat pump

Please speak to the sales executive for more information

Total Internal Area	93.5 sq m
Kitchen / Dining area	3.7m x 5.2m
Living	3.6m x 4.2m
Bedroom 1	4.1m x 2.9m
Bedroom 2	5.2m x 2.5 m
Bedroom 3	4.1m x 2.1m

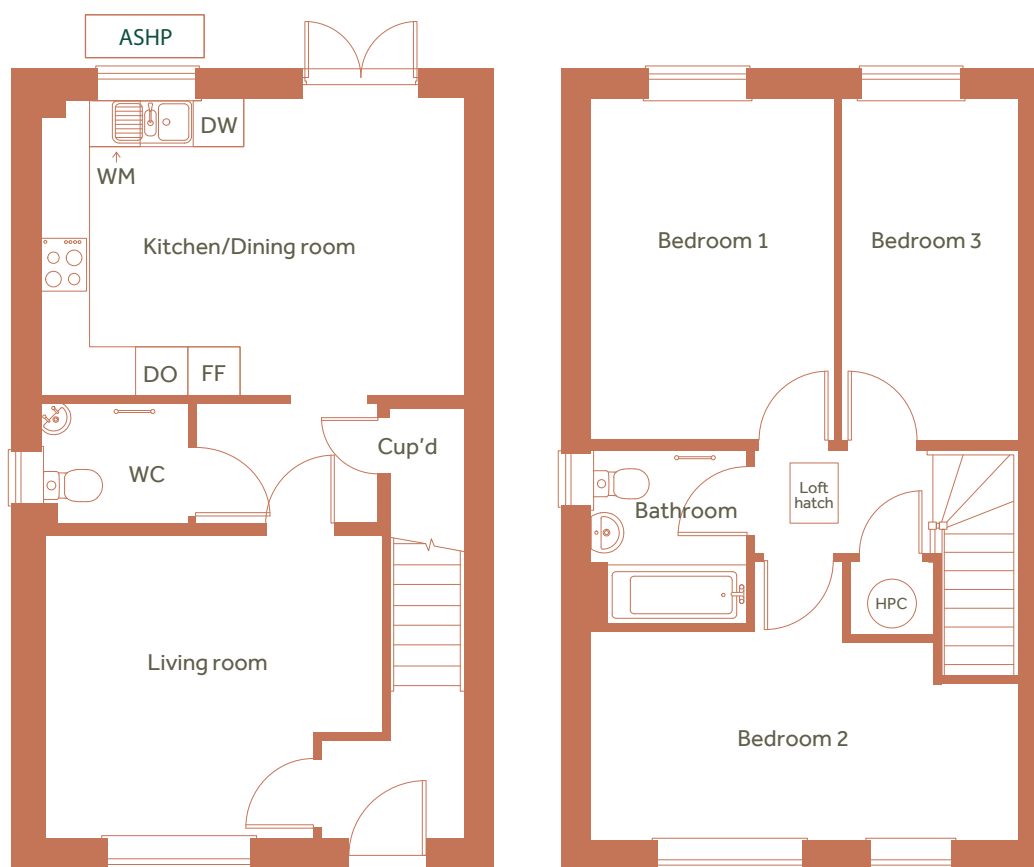
Energy Efficiency Rating	Environmental Impact (CO ₂) Rating
 <p>Very energy efficient - lower running costs</p> <p>EU Directive 2002/91/EC</p> <p>England</p>	 <p>Very environmentally friendly - lower CO₂ emissions</p> <p>EU Directive 2002/91/EC</p> <p>England</p>

C = Cupboard, WC = Water Closet, HPC = Heat Pump Cylinder, FF = Fridge Freezer, DW = Dishwasher, WM = Washing Machine DO = Integrated double oven

Floor plans shown are indicative only. All room sizes are approximate with maximum dimensions of finished items of furniture. Room layouts may be subject to minor modifications. Furniture, kitchen and bathroom layouts shown are indicative only. Measurement at widest point.

Three bedroom end of terraced house

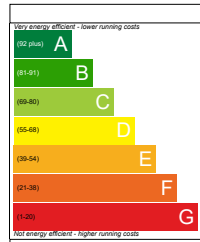
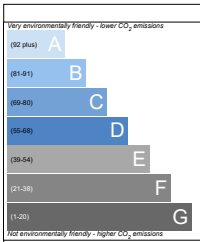
16 Cornfields, West Malling



ASHP = Air source heat pump

Please speak to the sales executive for more information

Total Internal Area	93.5 sq m
Kitchen / Dining area	3.7m x 5.2m
Living	3.6m x 4.2m
Bedroom 1	4.1m x 2.9m
Bedroom 2	5.2m x 2.5 m
Bedroom 3	4.1m x 2.1m

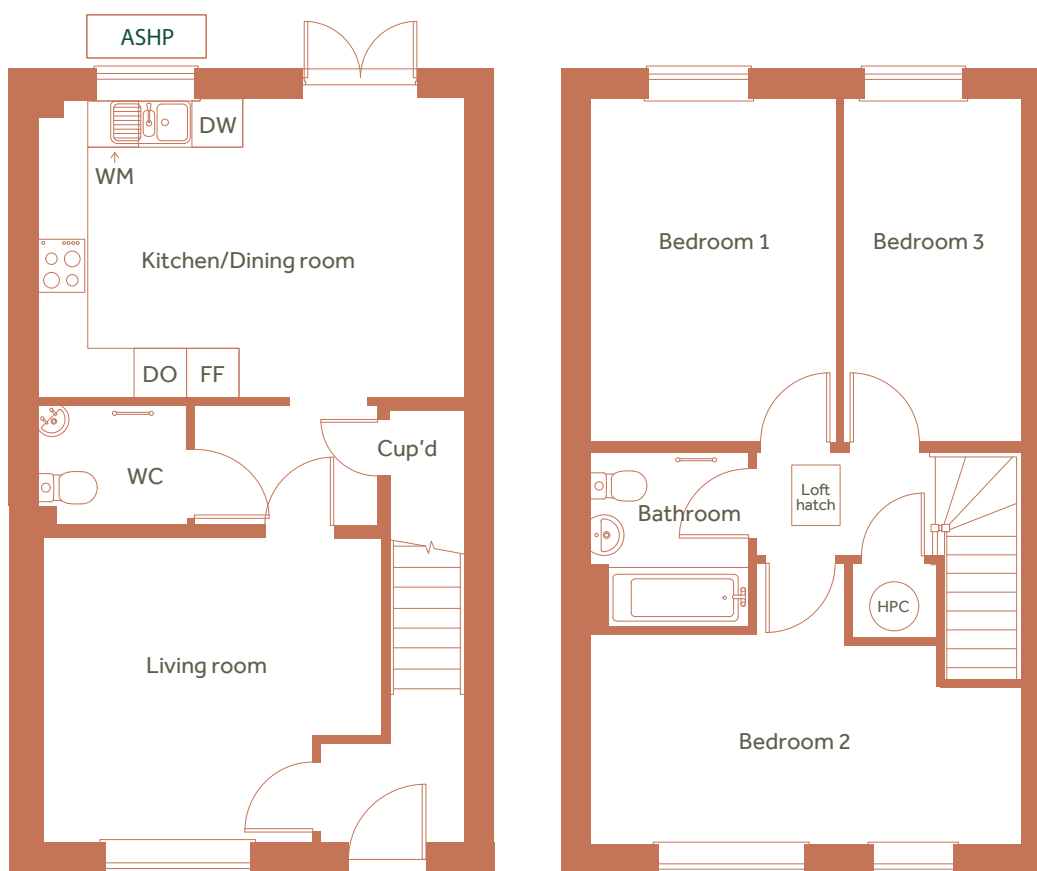
Energy Efficiency Rating	Environmental Impact (CO ₂) Rating
 <p>Very energy efficient - lower running costs</p> <p>93</p> <p>England</p> <p>EU Directive 2002/91/EC</p>	 <p>Very environmentally friendly - lower CO₂ emissions</p> <p>91</p> <p>England</p> <p>EU Directive 2002/91/EC</p>

C = Cupboard, WC = Water Closet, HPC = Heat Pump Cylinder, FF = Fridge Freezer, DW = Dishwasher, WM = Washing Machine DO = Integrated double oven

Floor plans shown are indicative only. All room sizes are approximate with maximum dimensions of finished items of furniture. Room layouts may be subject to minor modifications. Furniture, kitchen and bathroom layouts shown are indicative only. Measurement at widest point.

Three bedroom mid-terraced house

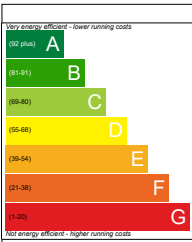
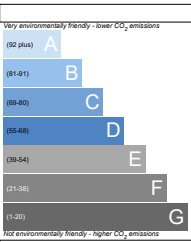
14 Cornfields, West Malling



ASHP = Air source heat pump

Please speak to the sales executive for more information

Total Internal Area	93.5 sq m
Kitchen / Dining area	3.7m x 5.2m
Living	3.6m x 4.2m
Bedroom 1	4.1m x 2.9m
Bedroom 2	5.2m x 2.5 m
Bedroom 3	4.1m x 2.1m

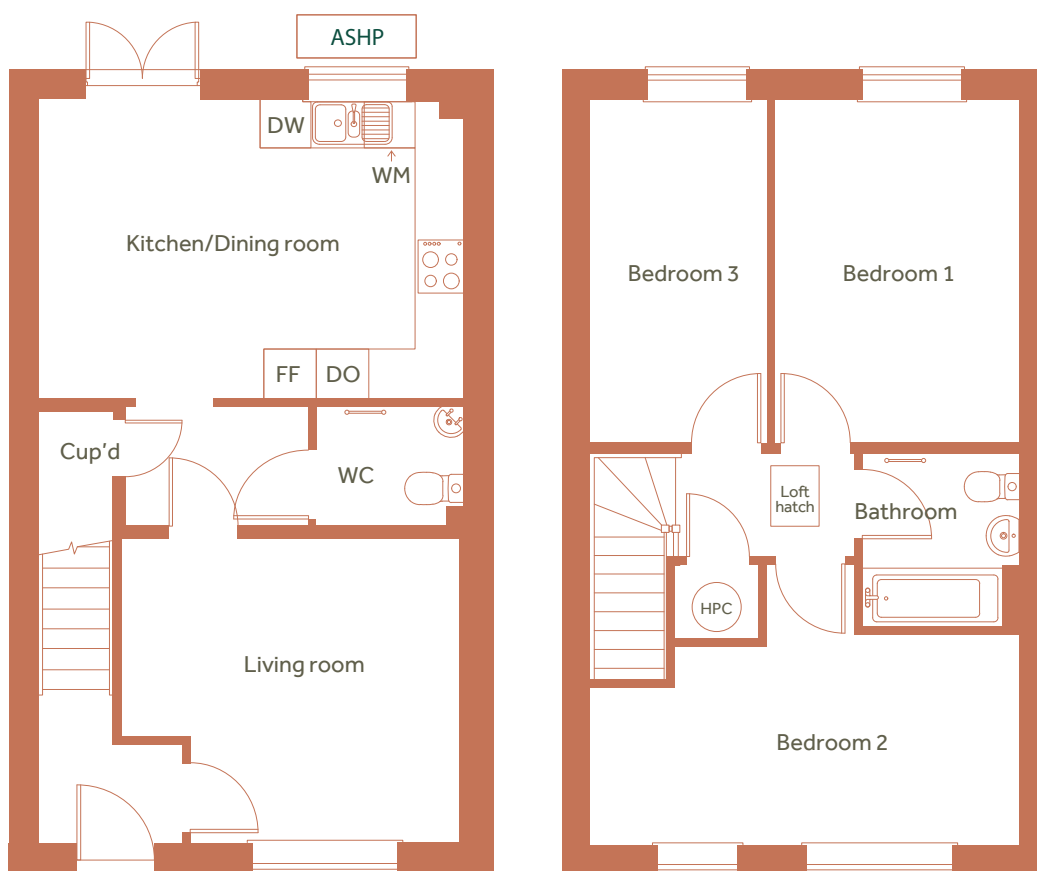
Energy Efficiency Rating	Environmental Impact (CO ₂) Rating
 <p>Very energy efficient - lower running costs</p> <p>92</p> <p>EU Directive 2002/91/EC</p> <p>England</p>	 <p>Very environmentally friendly - lower CO₂ emissions</p> <p>92</p> <p>EU Directive 2002/91/EC</p> <p>England</p>

C = Cupboard, WC = Water Closet, HPC = Heat Pump Cylinder, FF = Fridge Freezer, DW = Dishwasher, WM = Washing Machine DO = Integrated double oven

Floor plans shown are indicative only. All room sizes are approximate with maximum dimensions of finished items of furniture. Room layouts may be subject to minor modifications. Furniture, kitchen and bathroom layouts shown are indicative only. Measurement at widest point.

Three bedroom mid-terraced house

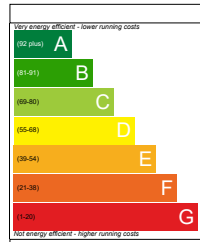
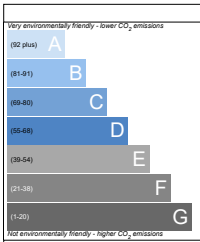
12 Cornfields, West Malling



ASHP = Air source heat pump

Please speak to the sales executive for more information

Total Internal Area	93.5 sq m
Kitchen / Dining area	3.7m x 5.2m
Living	3.6m x 4.2m
Bedroom 1	4.1m x 2.9m
Bedroom 2	5.2m x 2.5 m
Bedroom 3	4.1m x 2.1m

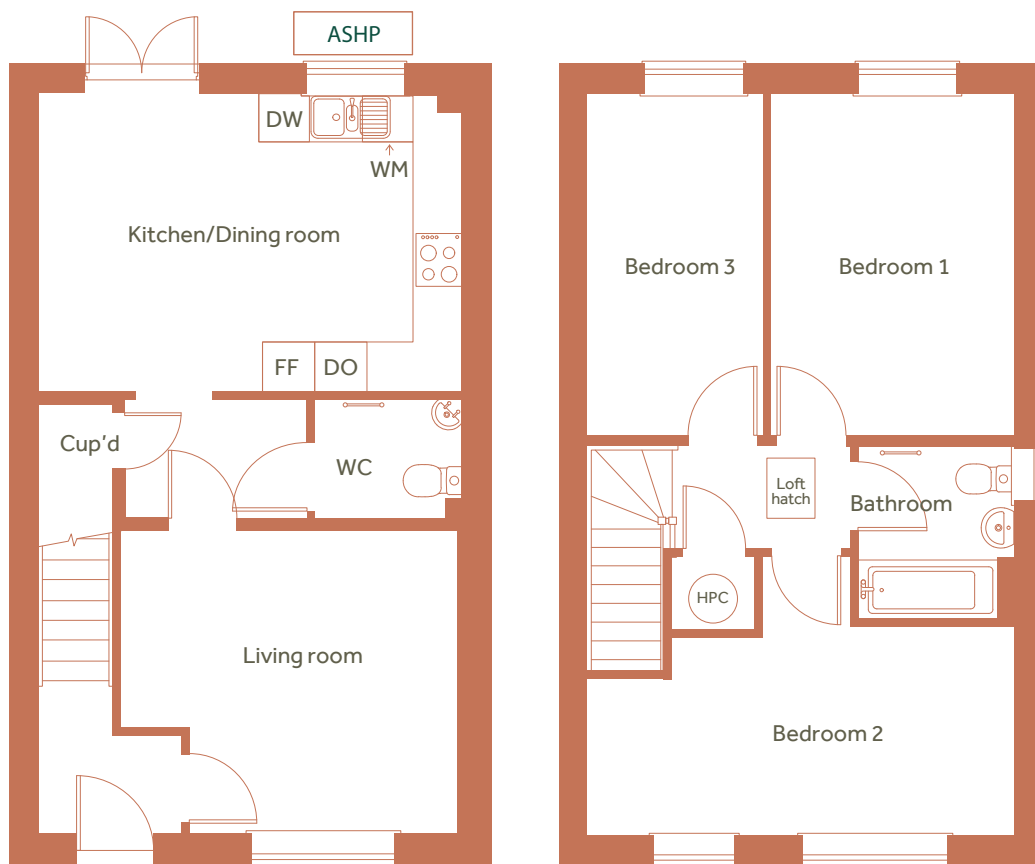
Energy Efficiency Rating	Environmental Impact (CO ₂) Rating
 <p>92</p> <p>England</p> <p>EU Directive 2002/91/EC</p>	 <p>92</p> <p>England</p> <p>EU Directive 2002/91/EC</p>

C = Cupboard, WC = Water Closet, HPC = Heat Pump Cylinder, FF = Fridge Freezer, DW = Dishwasher, WM = Washing Machine DO = Integrated double oven

Floor plans shown are indicative only. All room sizes are approximate with maximum dimensions of finished items of furniture. Room layouts may be subject to minor modifications. Furniture, kitchen and bathroom layouts shown are indicative only. Measurement at widest point.

Three bedroom end of terraced house

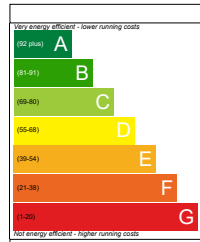
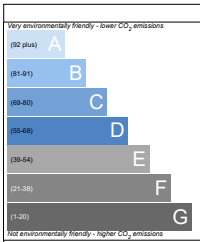
10 Cornfields, West Malling



ASHP = Air source heat pump

Please speak to the sales executive for more information

Total Internal Area	93.5 sq m
Kitchen / Dining area	3.7m x 5.2m
Living	3.6m x 4.2m
Bedroom 1	4.1m x 2.9m
Bedroom 2	5.2m x 2.5 m
Bedroom 3	4.1m x 2.1m

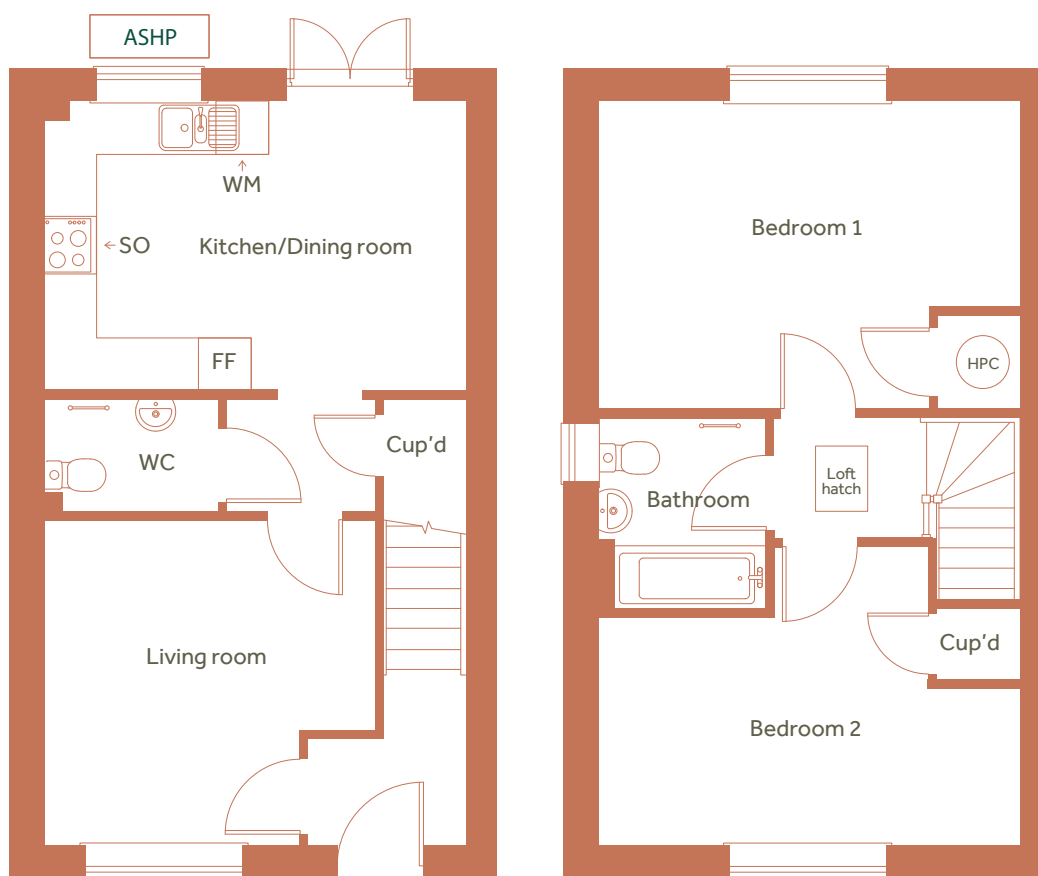
Energy Efficiency Rating	Environmental Impact (CO ₂) Rating
 <p>Very energy efficient - lower running costs</p> <p>93</p> <p>England</p> <p>EU Directive 2002/91/EC</p>	 <p>Very environmentally friendly - lower CO₂ emissions</p> <p>91</p> <p>England</p> <p>EU Directive 2002/91/EC</p>

C = Cupboard, WC = Water Closet, HPC = Heat Pump Cylinder, FF = Fridge Freezer, DW = Dishwasher, WM = Washing Machine DO = Integrated double oven

Floor plans shown are indicative only. All room sizes are approximate with maximum dimensions of finished items of furniture. Room layouts may be subject to minor modifications. Furniture, kitchen and bathroom layouts shown are indicative only. Measurement at widest point.

Two bedroom end of terraced house

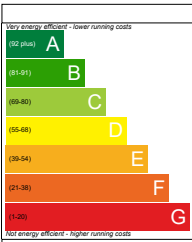
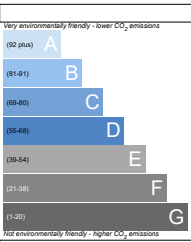
1 Wigan Lane, West Malling



ASHP = Air source heat pump

Please speak to the sales executive for more information

Total Internal Area	79 sq m
Kitchen / Dining area	3.2m x 4.7m
Living	3.6m x 3.7m
Bedroom 1	3.4m x 4.7m
Bedroom 2	3.3m x 4.7m

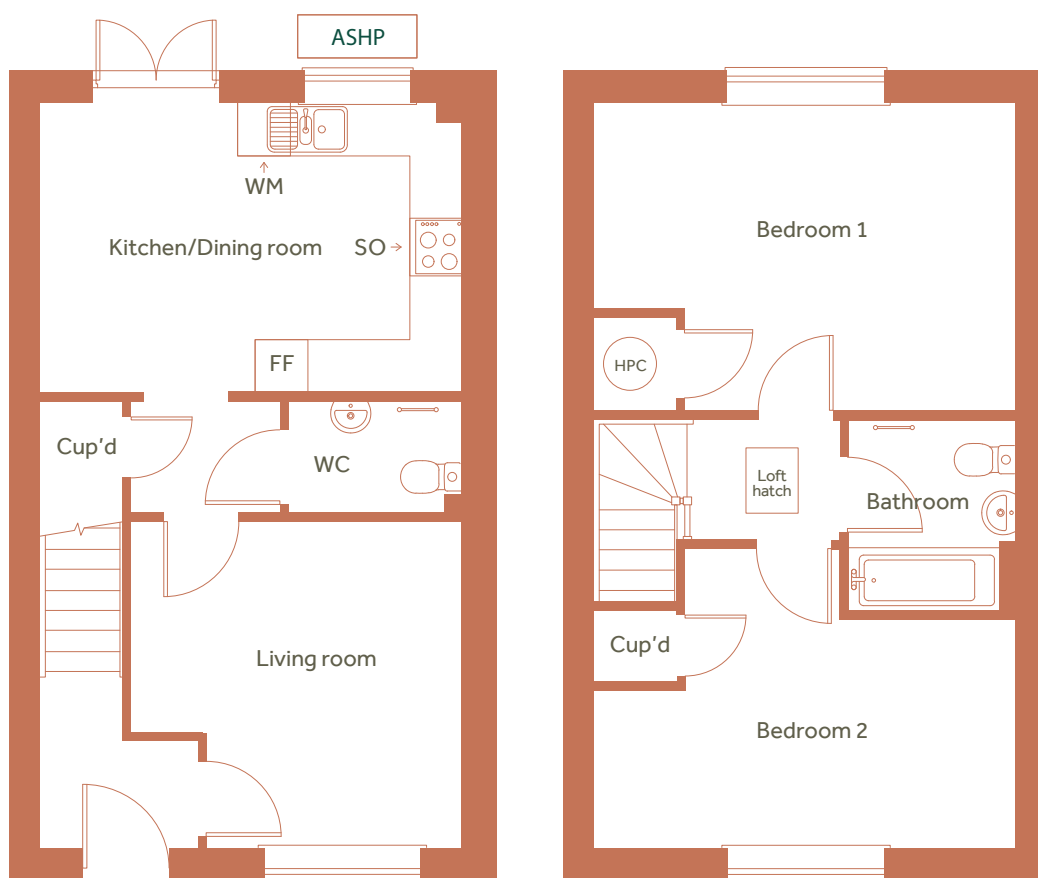
Energy Efficiency Rating	Environmental Impact (CO ₂) Rating
 <p>Very energy efficient - lower running costs</p> <p>A (92 plus)</p> <p>B (81-91)</p> <p>C (69-80)</p> <p>D (55-68)</p> <p>E (39-54)</p> <p>F (21-38)</p> <p>G (1-20)</p> <p>Not energy efficient - higher running costs</p> <p>England</p> <p>EU Directive 2002/91/EC</p>	 <p>Very environmentally friendly - lower CO₂ emissions</p> <p>A (92 plus)</p> <p>B (81-91)</p> <p>C (69-80)</p> <p>D (55-68)</p> <p>E (39-54)</p> <p>F (21-38)</p> <p>G (1-20)</p> <p>Not environmentally friendly - higher CO₂ emissions</p> <p>England</p> <p>EU Directive 2002/91/EC</p>

C = Cupboard, WC = Water Closet, HPC = Heat Pump Cylinder, FF = Fridge Freezer, WM = Washing Machine, SO = Integrated single oven

Floor plans shown are indicative only. All room sizes are approximate with maximum dimensions of finished items of furniture. Room layouts may be subject to minor modifications. Furniture, kitchen and bathroom layouts shown are indicative only. Measurement at widest point.

Two bedroom mid-terraced house

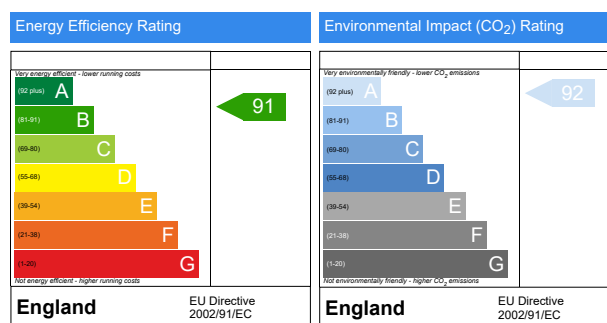
3 Wigan Lane, West Malling



ASHP = Air source heat pump

Please speak to the sales executive for more information

Total Internal Area	79 sq m
Kitchen / Dining area	3.2m x 4.7m
Living	3.6m x 3.7m
Bedroom 1	3.4m x 4.7m
Bedroom 2	2.5m x 4.7m

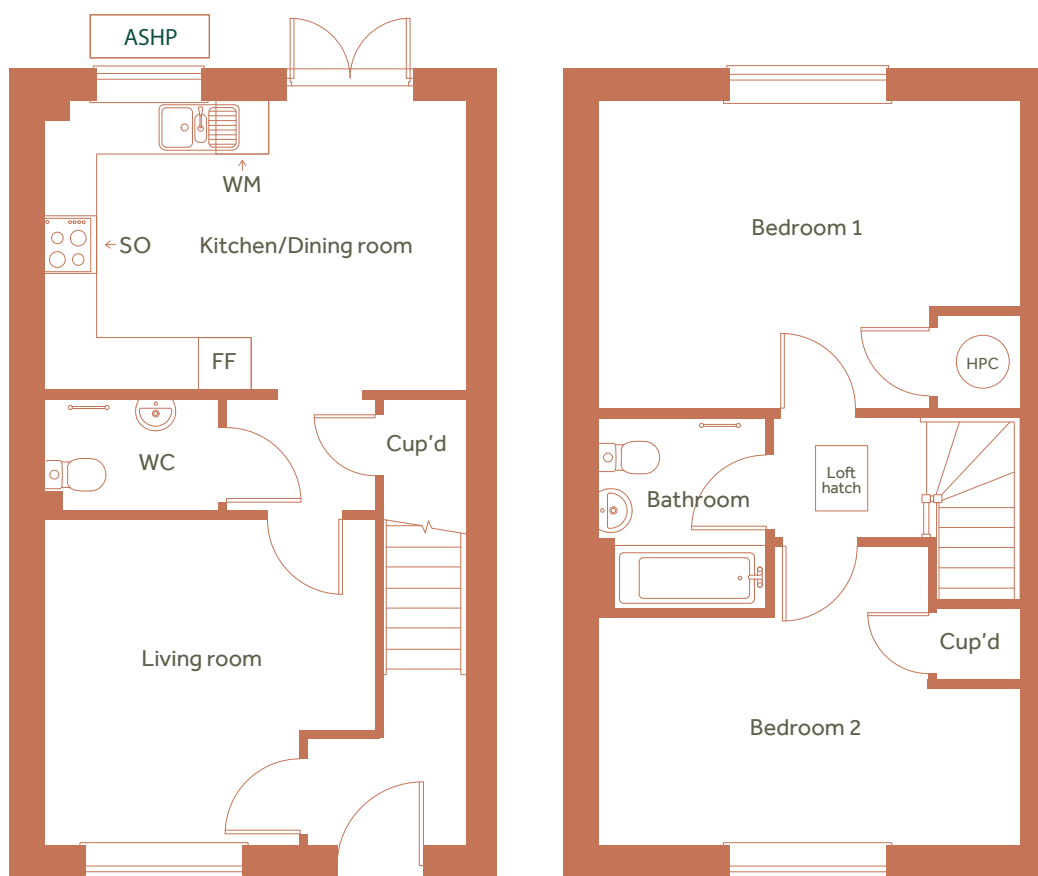


C = Cupboard, WC = Water Closet, HPC = Heat Pump Cylinder, FF = Fridge Freezer, WM = Washing Machine, SO = Integrated single oven

Floor plans shown are indicative only. All room sizes are approximate with maximum dimensions of finished items of furniture. Room layouts may be subject to minor modifications. Furniture, kitchen and bathroom layouts shown are indicative only. Measurement at widest point.

Two bedroom mid-terraced house

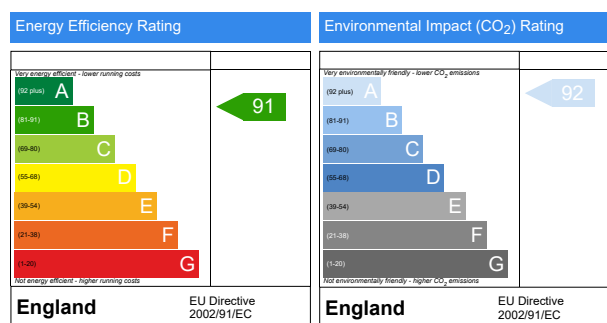
5 Wigan Lane, West Malling



ASHP = Air source heat pump

Please speak to the sales executive for more information

Total Internal Area	79 sq m
Kitchen / Dining area	3.2m x 4.7m
Living	3.6m x 3.7m
Bedroom 1	3.4m x 4.7m
Bedroom 2	2.5m x 4.7m



C = Cupboard, WC = Water Closet, HPC = Heat Pump Cylinder, FF = Fridge Freezer, WM = Washing Machine,

SO = Integrated single oven

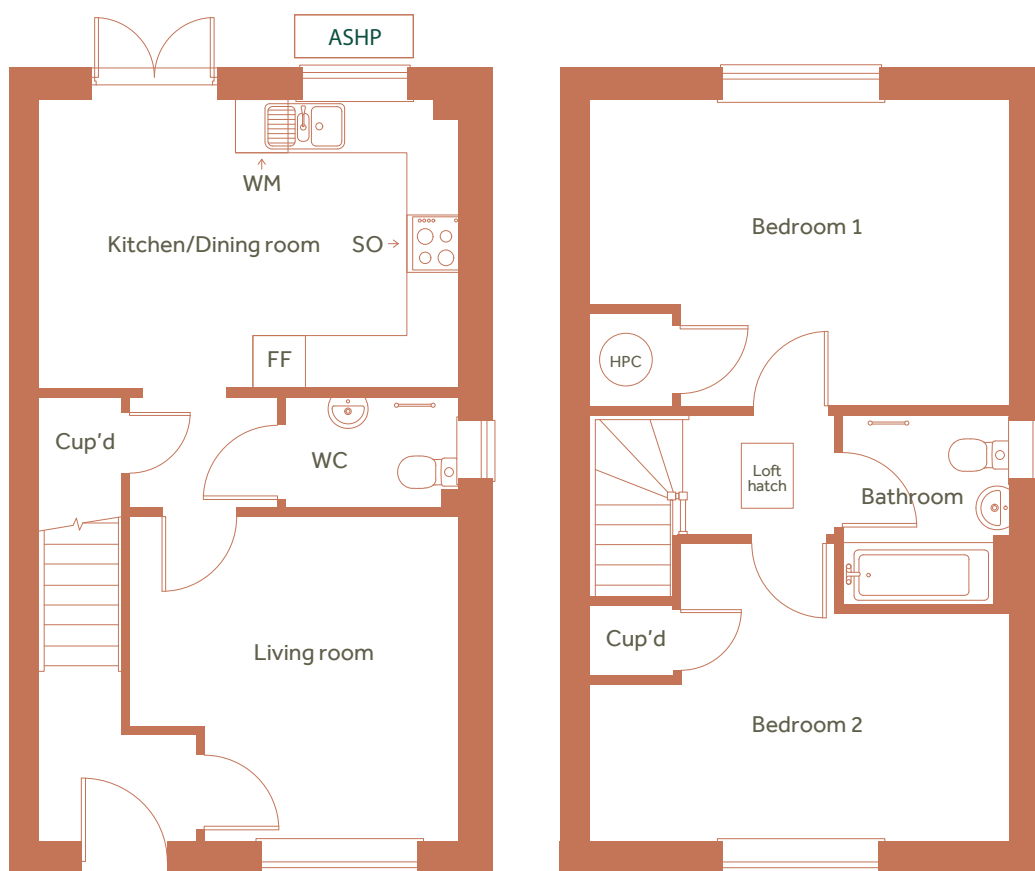
Floor plans shown are indicative only. All room sizes are approximate with maximum dimensions of finished items of furniture.

Room layouts may be subject to minor modifications. Furniture, kitchen and bathroom layouts shown are indicative only.

Measurement at widest point.

Two bedroom end of terraced house

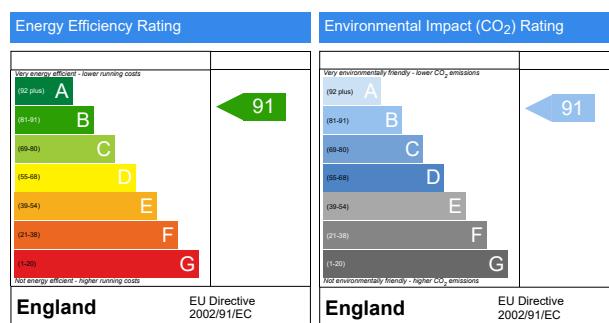
7 Wigan Lane, West Malling



ASHP = Air source heat pump

Please speak to the sales executive for more information

Total Internal Area	79 sq m
Kitchen / Dining area	3.2m x 4.7m
Living	3.6m x 3.7m
Bedroom 1	3.4m x 4.7m
Bedroom 2	2.5m x 4.7m

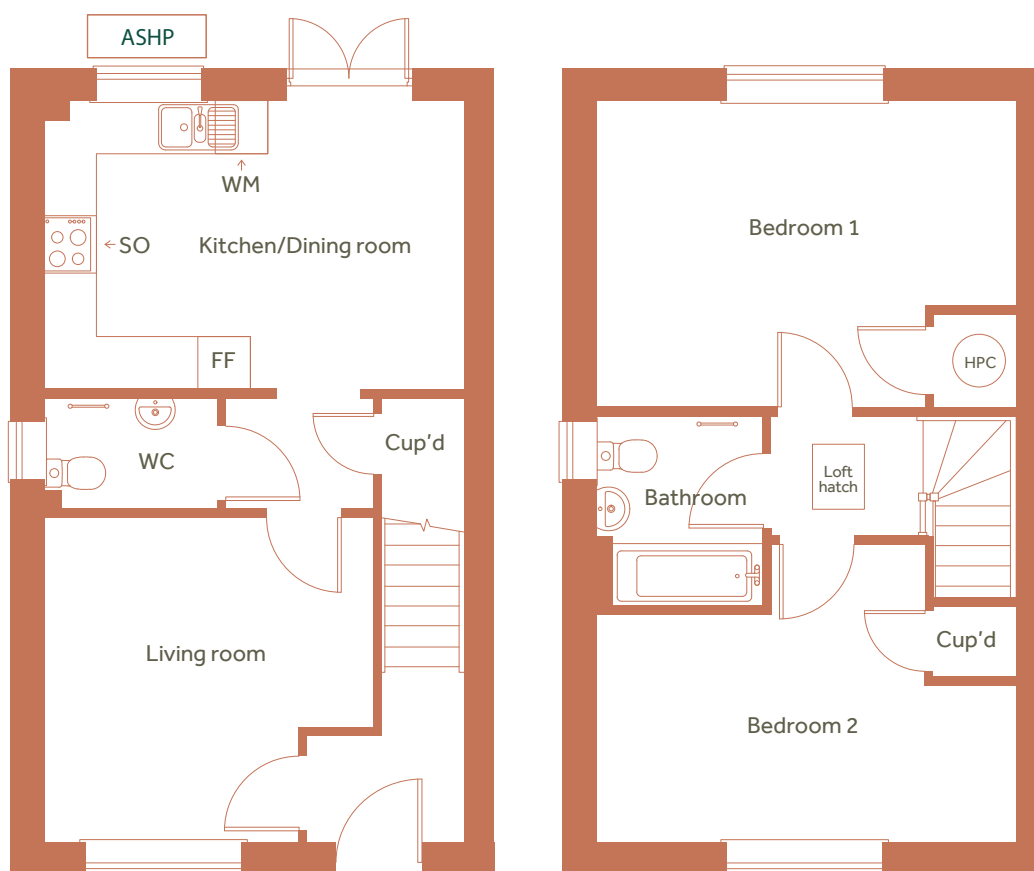


C = Cupboard, WC = Water Closet, HPC = Heat Pump Cylinder, FF = Fridge Freezer, WM = Washing Machine, SO = Integrated single oven

Floor plans shown are indicative only. All room sizes are approximate with maximum dimensions of finished items of furniture. Room layouts may be subject to minor modifications. Furniture, kitchen and bathroom layouts shown are indicative only. Measurement at widest point.

Two bedroom semi-detached house

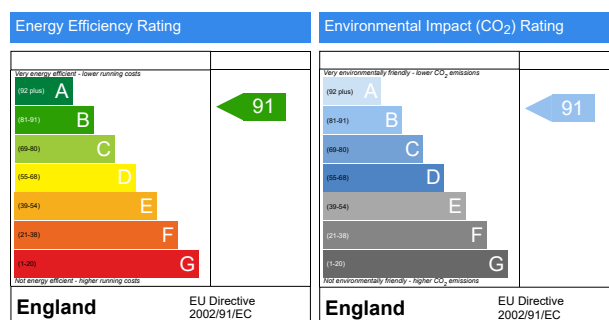
18 Wigan Lane, West Malling



ASHP = Air source heat pump

Please speak to the sales executive for more information

Total Internal Area	79 sq m
Kitchen / Dining area	3.2m x 4.7m
Living	3.6m x 3.7m
Bedroom 1	3.4m x 4.7m
Bedroom 2	2.5m x 4.7m

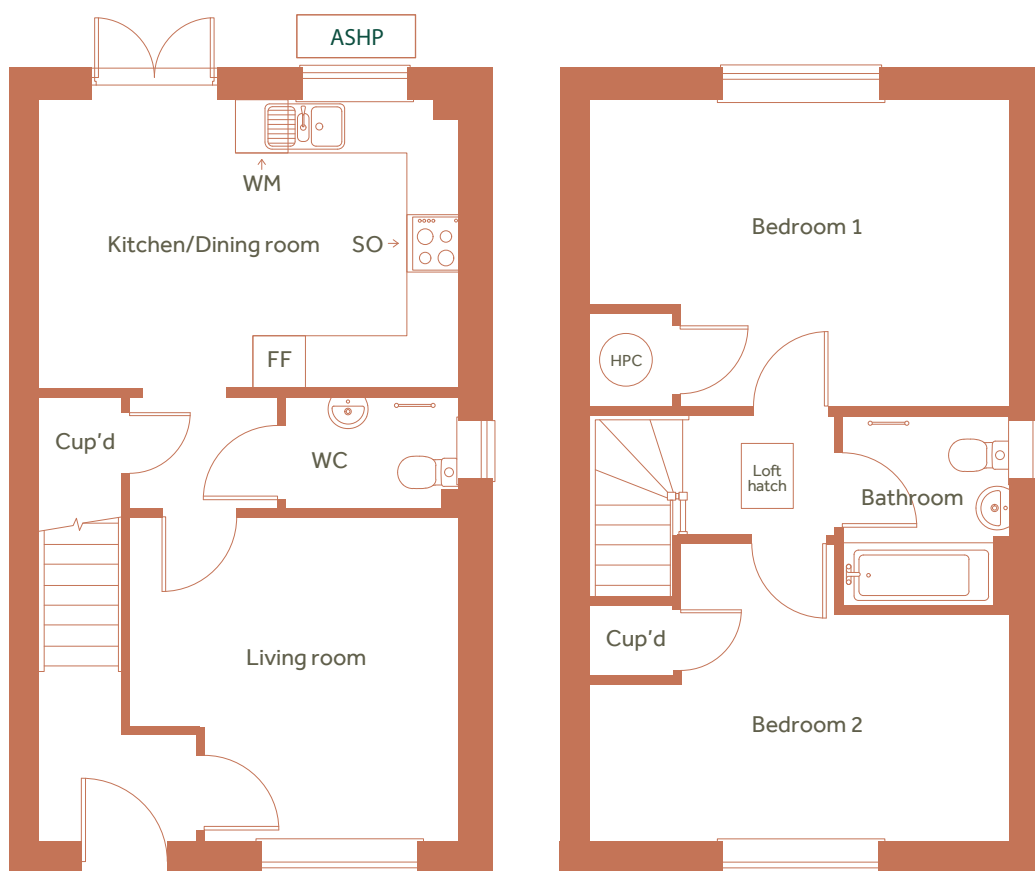


C = Cupboard, WC = Water Closet, HPC = Heat Pump Cylinder, FF = Fridge Freezer, WM = Washing Machine, SO = Integrated single oven

Floor plans shown are indicative only. All room sizes are approximate with maximum dimensions of finished items of furniture. Room layouts may be subject to minor modifications. Furniture, kitchen and bathroom layouts shown are indicative only. Measurement at widest point.

Two bedroom semi-detached house

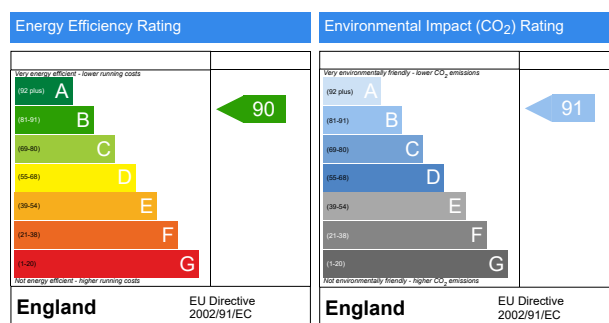
16 Wigan Lane, West Malling



ASHP = Air source heat pump

Please speak to the sales executive for more information

Total Internal Area	79 sq m
Kitchen / Dining area	3.2m x 4.7m
Living	3.6m x 3.7m
Bedroom 1	3.4m x 4.7m
Bedroom 2	2.5m x 4.7m

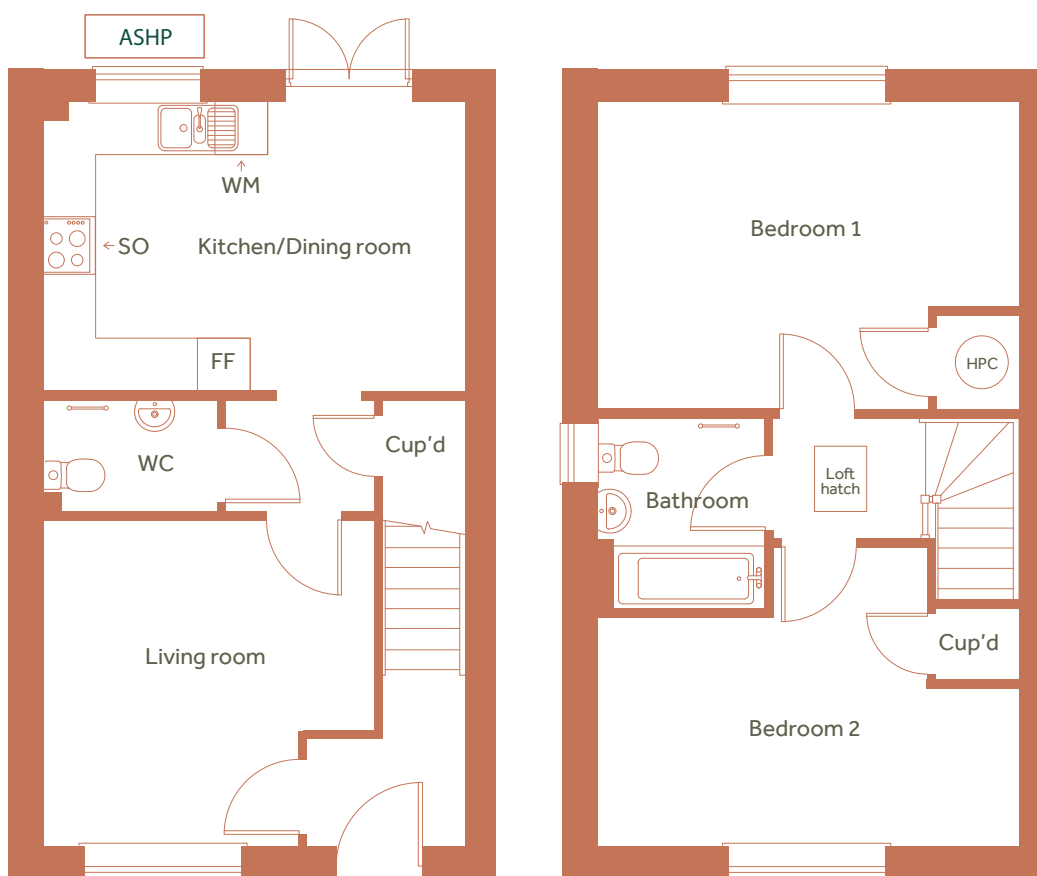


C = Cupboard, WC = Water Closet, HPC = Heat Pump Cylinder, FF = Fridge Freezer, WM = Washing Machine, SO = Integrated single oven

Floor plans shown are indicative only. All room sizes are approximate with maximum dimensions of finished items of furniture. Room layouts may be subject to minor modifications. Furniture, kitchen and bathroom layouts shown are indicative only. Measurement at widest point.

Two bedroom semi-detached house

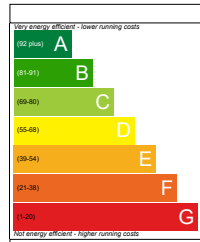
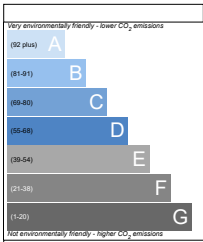
12 Wigan Lane, West Malling



ASHP = Air source heat pump

Please speak to the sales executive for more information

Total Internal Area	79 sq m
Kitchen / Dining area	3.2m x 4.7m
Living	3.6m x 3.7m
Bedroom 1	3.4m x 4.7m
Bedroom 2	2.5m x 4.7m

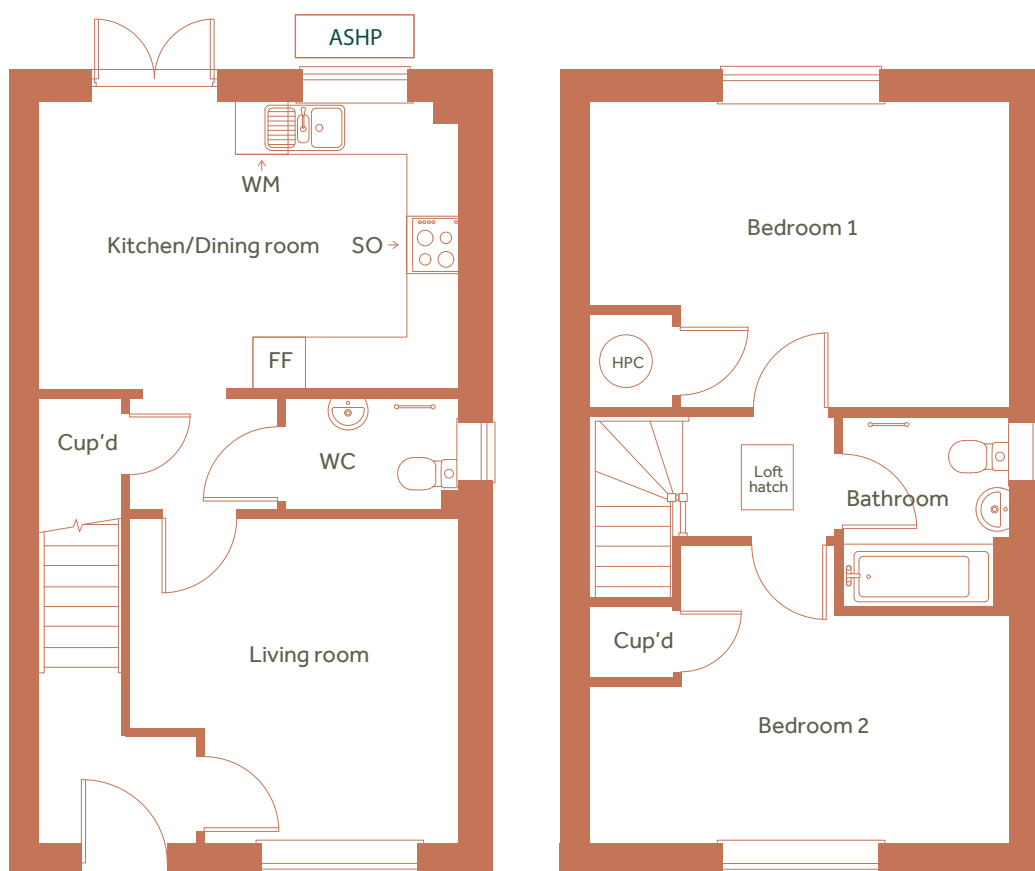
Energy Efficiency Rating	Environmental Impact (CO ₂) Rating
 <p>Very energy efficient - lower running costs</p> <p>A (92 plus)</p> <p>B (81-91)</p> <p>C (69-80)</p> <p>D (55-68)</p> <p>E (39-54)</p> <p>F (21-38)</p> <p>G (1-20)</p> <p>Not energy efficient - higher running costs</p> <p>England</p> <p>EU Directive 2002/91/EC</p>	 <p>Very environmentally friendly - lower CO₂ emissions</p> <p>A (92 plus)</p> <p>B (81-91)</p> <p>C (69-80)</p> <p>D (55-68)</p> <p>E (39-54)</p> <p>F (21-38)</p> <p>G (1-20)</p> <p>Not environmentally friendly - higher CO₂ emissions</p> <p>England</p> <p>EU Directive 2002/91/EC</p>

C = Cupboard, WC = Water Closet, HPC = Heat Pump Cylinder, FF = Fridge Freezer, WM = Washing Machine, SO = Integrated single oven

Floor plans shown are indicative only. All room sizes are approximate with maximum dimensions of finished items of furniture. Room layouts may be subject to minor modifications. Furniture, kitchen and bathroom layouts shown are indicative only. Measurement at widest point.

Two bedroom semi-detached house

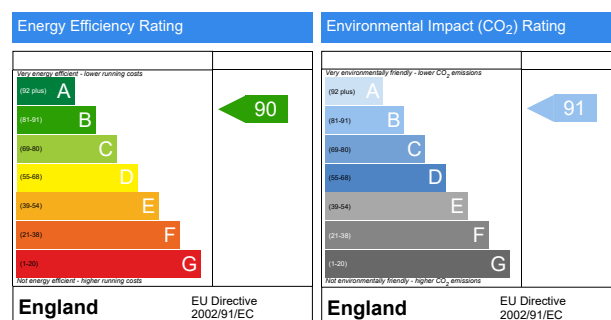
10 Wigan Lane, West Malling



ASHP = Air source heat pump

Please speak to the sales executive for more information

Total Internal Area	79 sq m
Kitchen / Dining area	3.2m x 4.7m
Living	3.6m x 3.7m
Bedroom 1	3.4m x 4.7m
Bedroom 2	2.5m x 4.7m

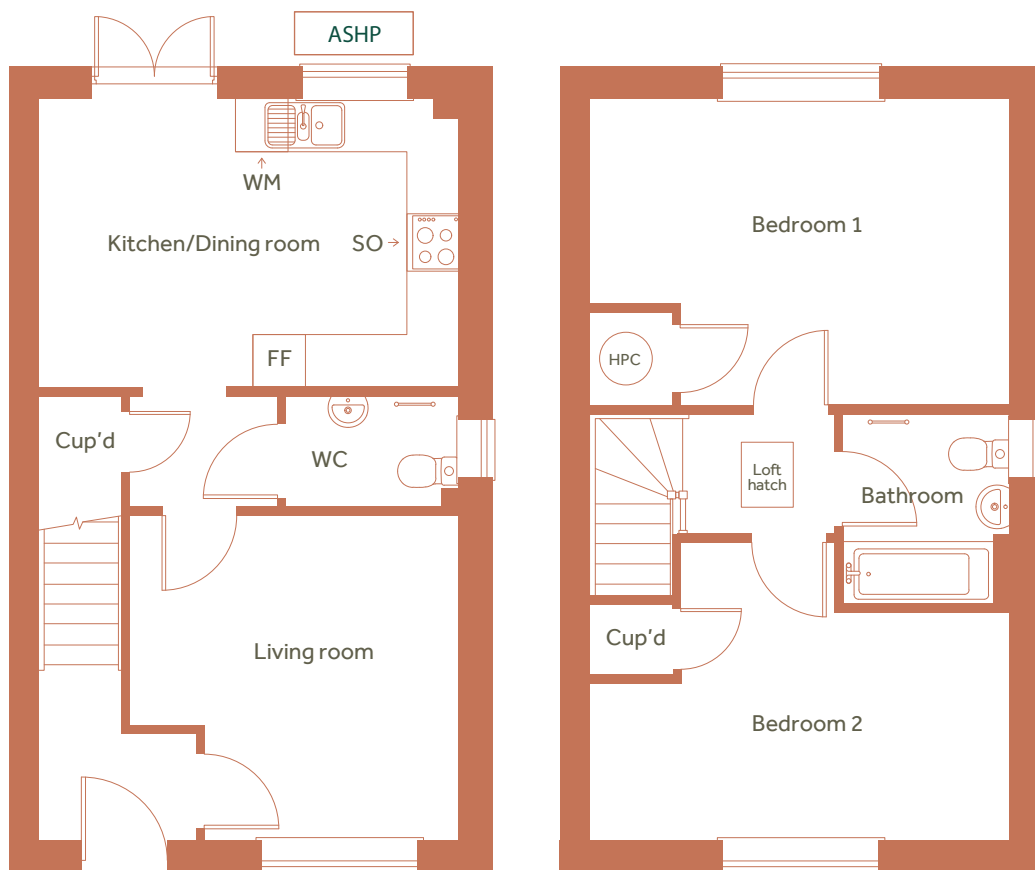


C = Cupboard, WC = Water Closet, HPC = Heat Pump Cylinder, FF = Fridge Freezer, WM = Washing Machine, SO = Integrated single oven

Floor plans shown are indicative only. All room sizes are approximate with maximum dimensions of finished items of furniture. Room layouts may be subject to minor modifications. Furniture, kitchen and bathroom layouts shown are indicative only. Measurement at widest point.

Two bedroom end of terraced house

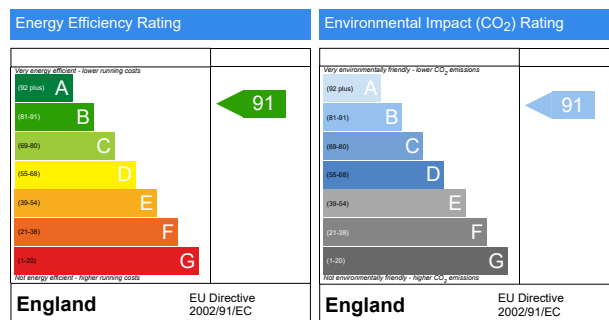
7 Edward Davis Crescent, West Malling



ASHP = Air source heat pump

Please speak to the sales executive for more information

Total Internal Area	79 sq m
Kitchen / Dining area	3.2m x 4.7m
Living	3.6m x 3.7m
Bedroom 1	3.4m x 4.7m
Bedroom 2	2.5m x 4.7m

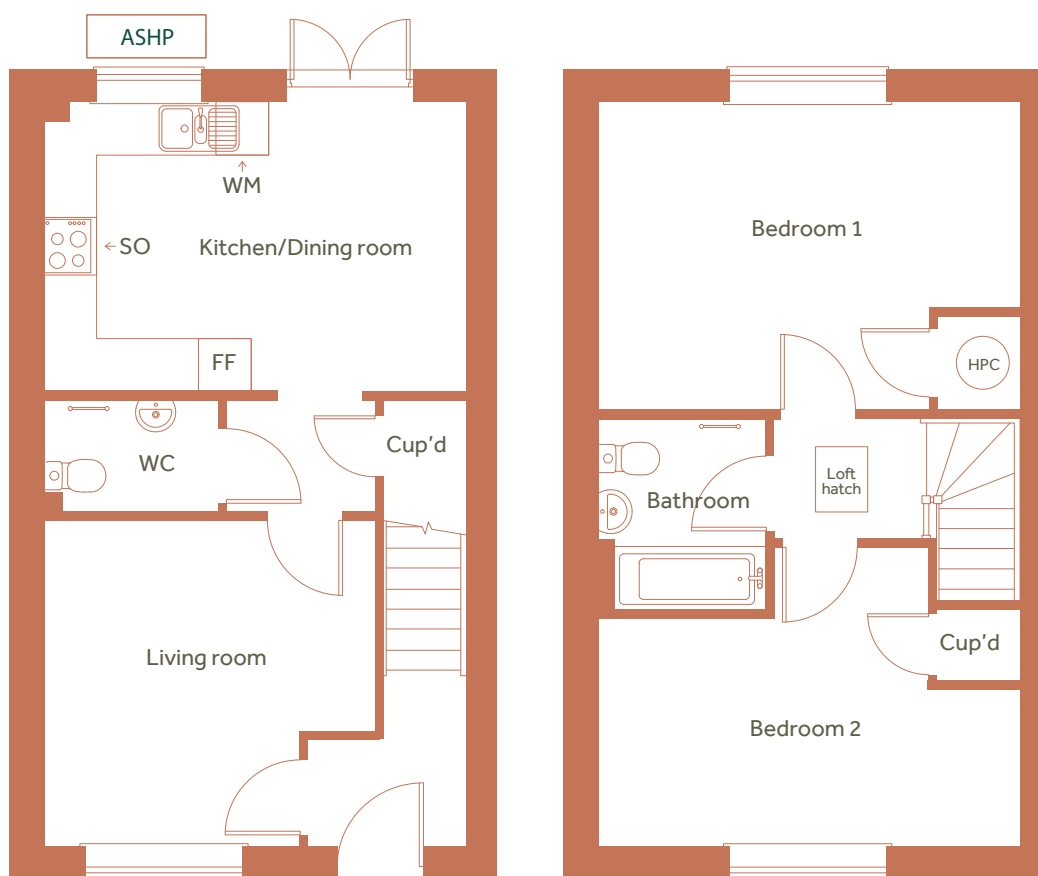


C = Cupboard, WC = Water Closet, HPC = Heat Pump Cylinder, FF = Fridge Freezer, WM = Washing Machine, SO = Integrated single oven

Floor plans shown are indicative only. All room sizes are approximate with maximum dimensions of finished items of furniture. Room layouts may be subject to minor modifications. Furniture, kitchen and bathroom layouts shown are indicative only. Measurement at widest point.

Two bedroom mid-terraced house

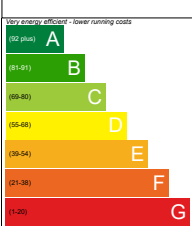
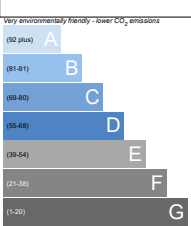
5 Edward Davis Crescent, West Malling



ASHP = Air source heat pump

Please speak to the sales executive for more information

Total Internal Area	79 sq m
Kitchen / Dining area	3.2m x 4.7m
Living	3.6m x 3.7m
Bedroom 1	3.4m x 4.7m
Bedroom 2	2.5m x 4.7m

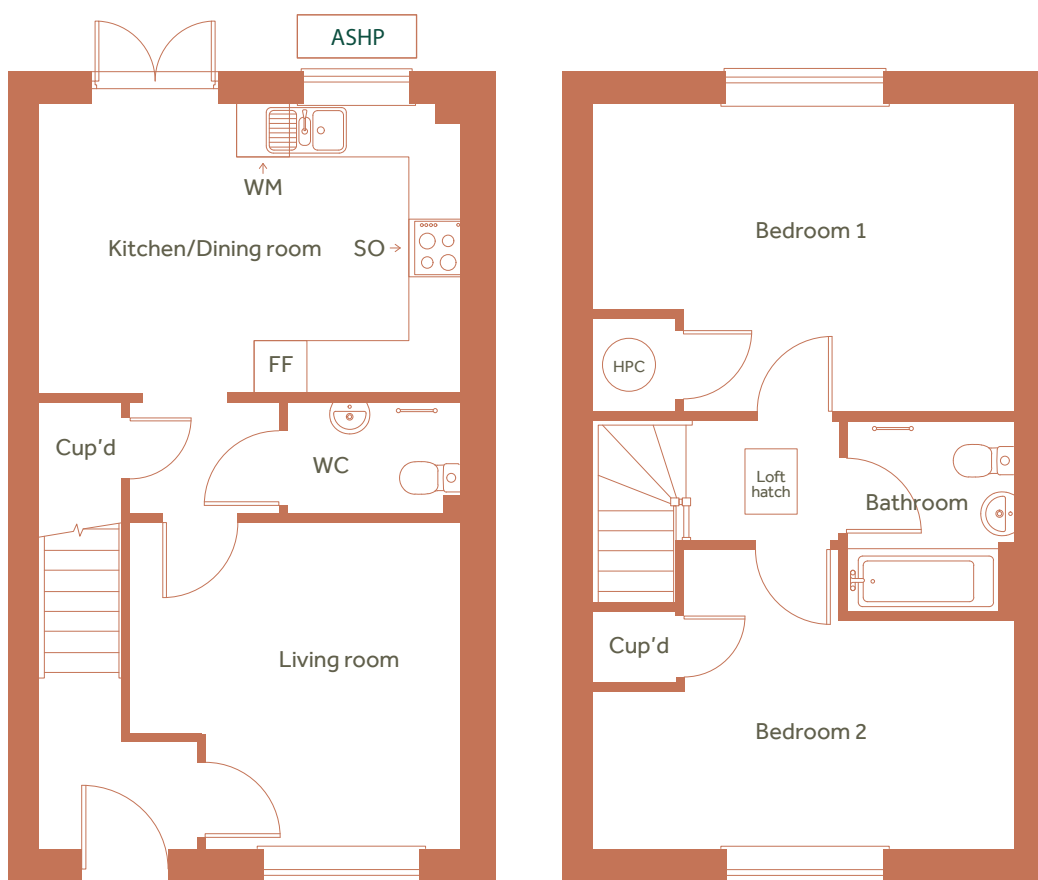
Energy Efficiency Rating	Environmental Impact (CO ₂) Rating
 <p>Very energy efficient - lower running costs</p> <p>A (92 plus)</p> <p>B (81-91)</p> <p>C (69-80)</p> <p>D (55-68)</p> <p>E (39-54)</p> <p>F (21-38)</p> <p>G (1-20)</p> <p>Not energy efficient - higher running costs</p> <p>England</p> <p>EU Directive 2002/91/EC</p>	 <p>Very environmentally friendly - lower CO₂ emissions</p> <p>A (92 plus)</p> <p>B (81-91)</p> <p>C (69-80)</p> <p>D (55-68)</p> <p>E (39-54)</p> <p>F (21-38)</p> <p>G (1-20)</p> <p>Not environmentally friendly - higher CO₂ emissions</p> <p>England</p> <p>EU Directive 2002/91/EC</p>

C = Cupboard, WC = Water Closet, HPC = Heat Pump Cylinder, FF = Fridge Freezer, WM = Washing Machine, SO = Integrated single oven

Floor plans shown are indicative only. All room sizes are approximate with maximum dimensions of finished items of furniture. Room layouts may be subject to minor modifications. Furniture, kitchen and bathroom layouts shown are indicative only. Measurement at widest point.

Two bedroom mid-terraced house

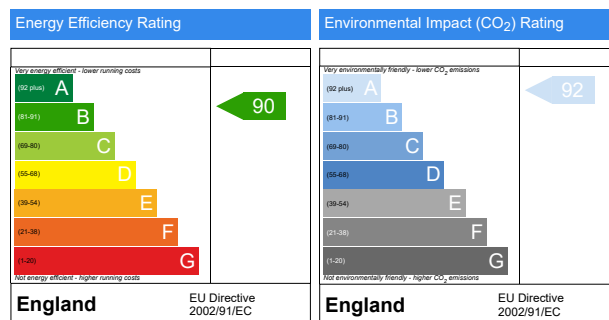
3 Edward Davis Crescent, West Malling



ASHP = Air source heat pump

Please speak to the sales executive for more information

Total Internal Area	79 sq m
Kitchen / Dining area	3.2m x 4.7m
Living	3.6m x 3.7m
Bedroom 1	3.4m x 4.7m
Bedroom 2	2.5m x 4.7m

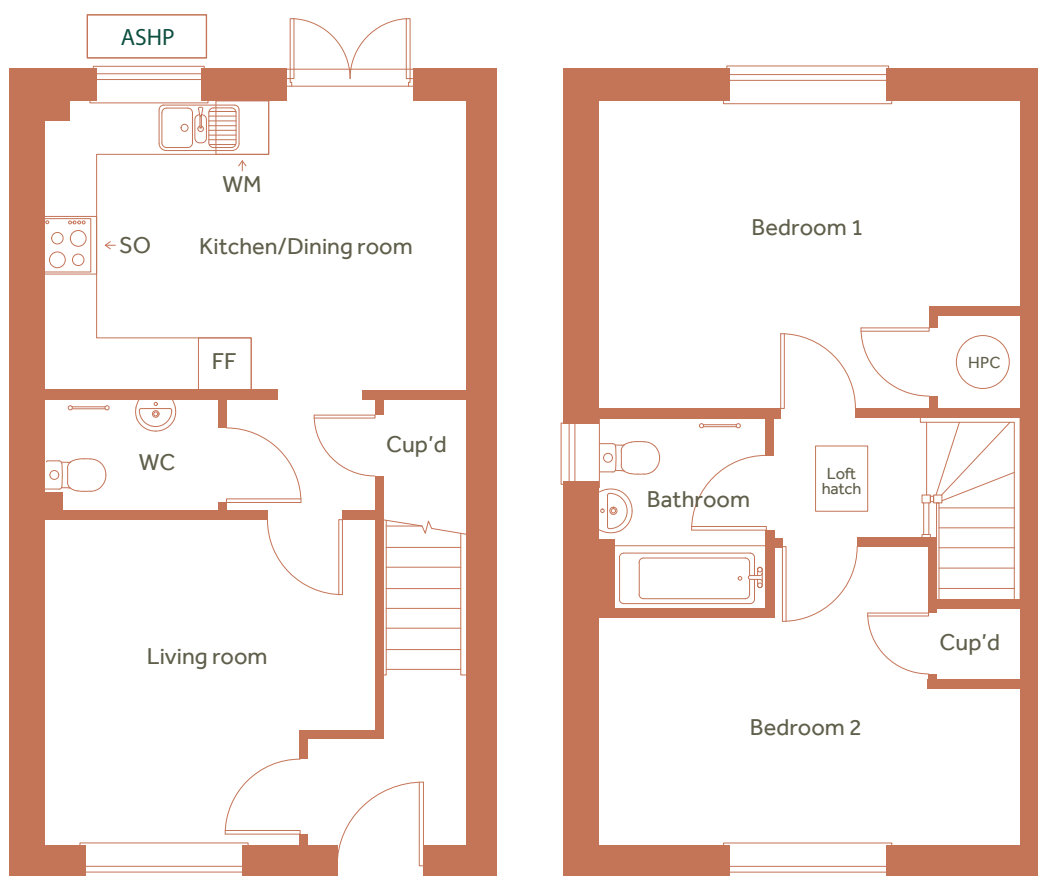


C = Cupboard, WC = Water Closet, HPC = Heat Pump Cylinder, FF = Fridge Freezer, WM = Washing Machine, SO = Integrated single oven

Floor plans shown are indicative only. All room sizes are approximate with maximum dimensions of finished items of furniture. Room layouts may be subject to minor modifications. Furniture, kitchen and bathroom layouts shown are indicative only. Measurement at widest point.

Two bedroom end of terraced house

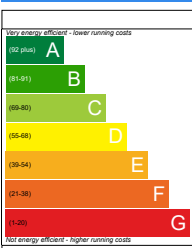
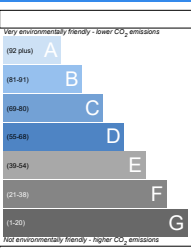
1 Edward Davis Crescent, West Malling



ASHP = Air source heat pump

Please speak to the sales executive for more information

Total Internal Area	79 sq m
Kitchen / Dining area	3.2m x 4.7m
Living	3.6m x 3.7m
Bedroom 1	3.4m x 4.7m
Bedroom 2	2.5m x 4.7m

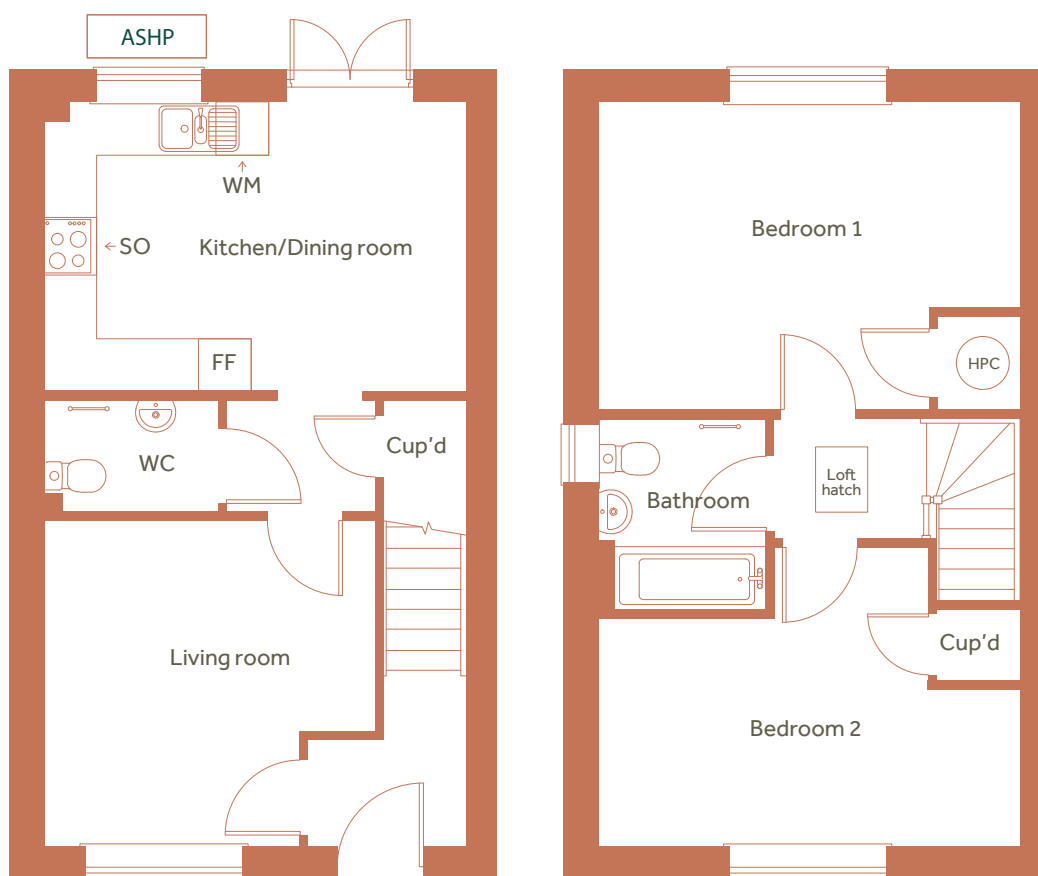
Energy Efficiency Rating	Environmental Impact (CO ₂) Rating
 <p>Very energy efficient - lower running costs</p> <p>A (92 plus)</p> <p>B (81-91)</p> <p>C (69-80)</p> <p>D (55-68)</p> <p>E (39-54)</p> <p>F (21-38)</p> <p>G (1-20)</p> <p>Not energy efficient - higher running costs</p> <p>England</p> <p>EU Directive 2002/91/EC</p>	 <p>Very environmentally friendly - lower CO₂ emissions</p> <p>A (92 plus)</p> <p>B (81-91)</p> <p>C (69-80)</p> <p>D (55-68)</p> <p>E (39-54)</p> <p>F (21-38)</p> <p>G (1-20)</p> <p>Not environmentally friendly - higher CO₂ emissions</p> <p>England</p> <p>EU Directive 2002/91/EC</p>

C = Cupboard, WC = Water Closet, HPC = Heat Pump Cylinder, FF = Fridge Freezer, WM = Washing Machine, SO = Integrated single oven

Floor plans shown are indicative only. All room sizes are approximate with maximum dimensions of finished items of furniture. Room layouts may be subject to minor modifications. Furniture, kitchen and bathroom layouts shown are indicative only. Measurement at widest point.

Two bedroom semi-detached house

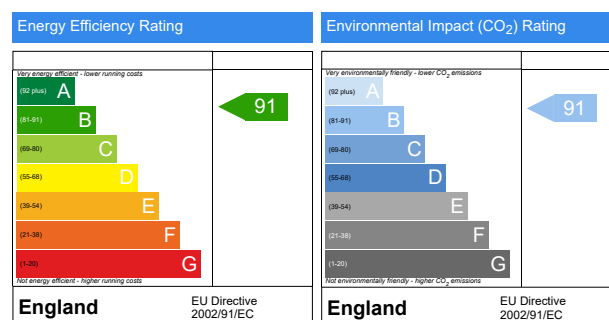
25 Papillon Lane, West Malling



ASHP = Air source heat pump

Please speak to the sales executive for more information

Total Internal Area	79 sq m
Kitchen / Dining area	3.2m x 4.7m
Living	3.6m x 3.7m
Bedroom 1	3.4m x 4.7m
Bedroom 2	2.5m x 4.7m

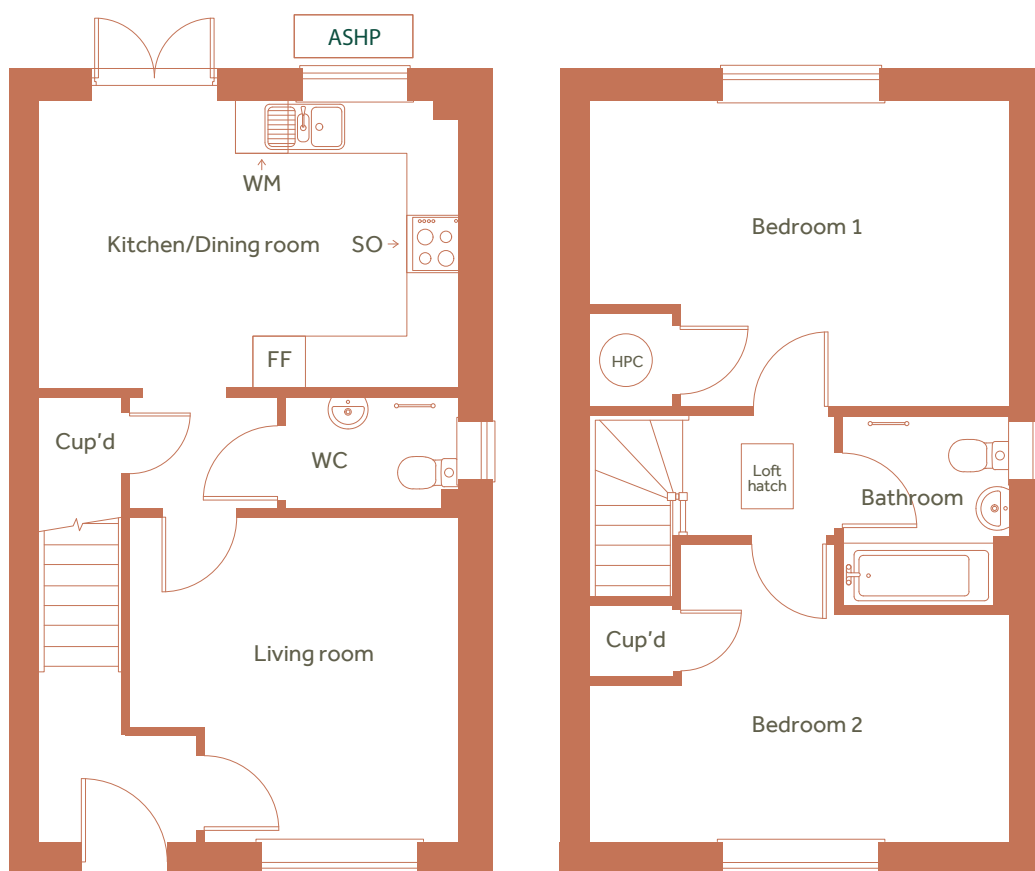


C = Cupboard, WC = Water Closet, HPC = Heat Pump Cylinder, FF = Fridge Freezer, WM = Washing Machine, SO = Integrated single oven

Floor plans shown are indicative only. All room sizes are approximate with maximum dimensions of finished items of furniture. Room layouts may be subject to minor modifications. Furniture, kitchen and bathroom layouts shown are indicative only. Measurement at widest point.

Two bedroom semi-detached house

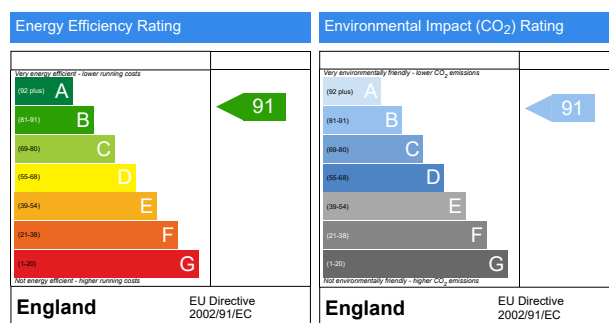
26 Papillon Lane, West Malling



ASHP = Air source heat pump

Please speak to the sales executive for more information

Total Internal Area	79 sq m
Kitchen / Dining area	3.2m x 4.7m
Living	3.6m x 3.7m
Bedroom 1	3.4m x 4.7m
Bedroom 2	2.5m x 4.7m

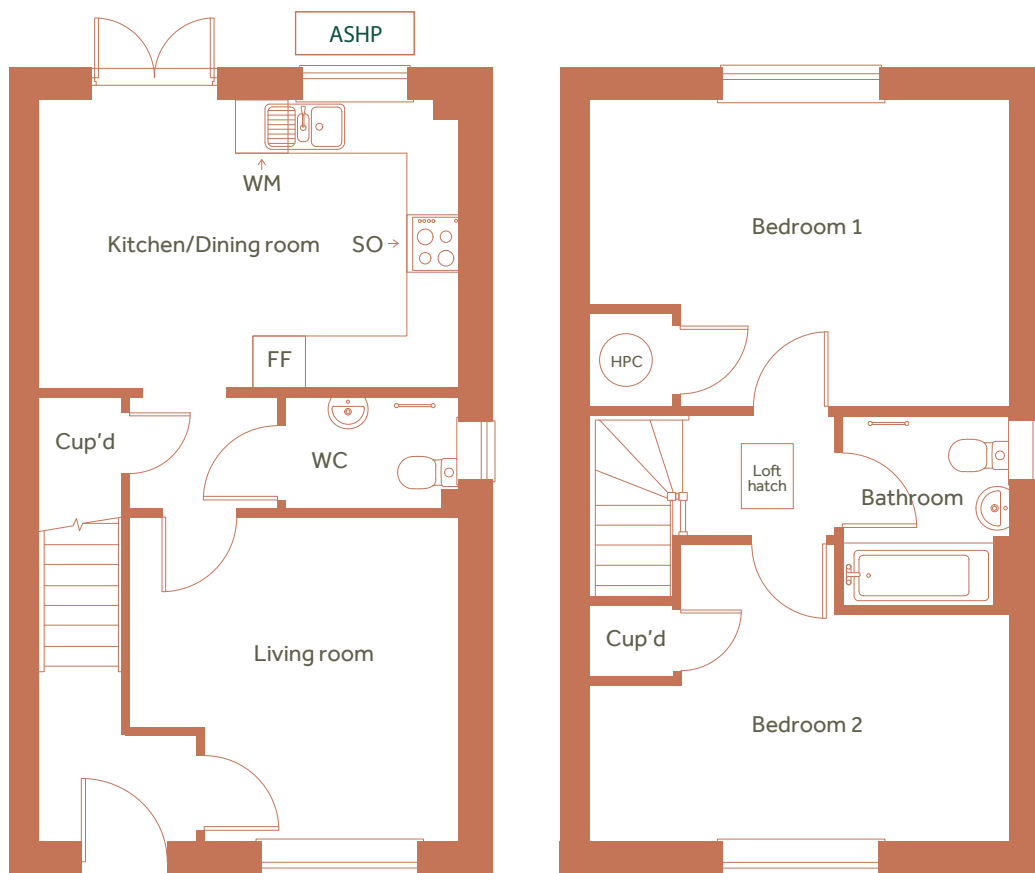


C = Cupboard, WC = Water Closet, HPC = Heat Pump Cylinder, FF = Fridge Freezer, WM = Washing Machine, SO = Integrated single oven

Floor plans shown are indicative only. All room sizes are approximate with maximum dimensions of finished items of furniture. Room layouts may be subject to minor modifications. Furniture, kitchen and bathroom layouts shown are indicative only. Measurement at widest point.

Two bedroom end of terraced house

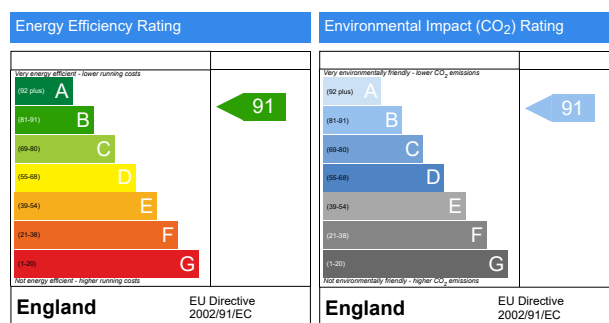
20 Forty Acres Lane, West Malling



ASHP = Air source heat pump

Please speak to the sales executive for more information

Total Internal Area	79 sq m
Kitchen / Dining area	3.2m x 4.7m
Living	3.6m x 3.7m
Bedroom 1	3.4m x 4.7m
Bedroom 2	2.5m x 4.7m

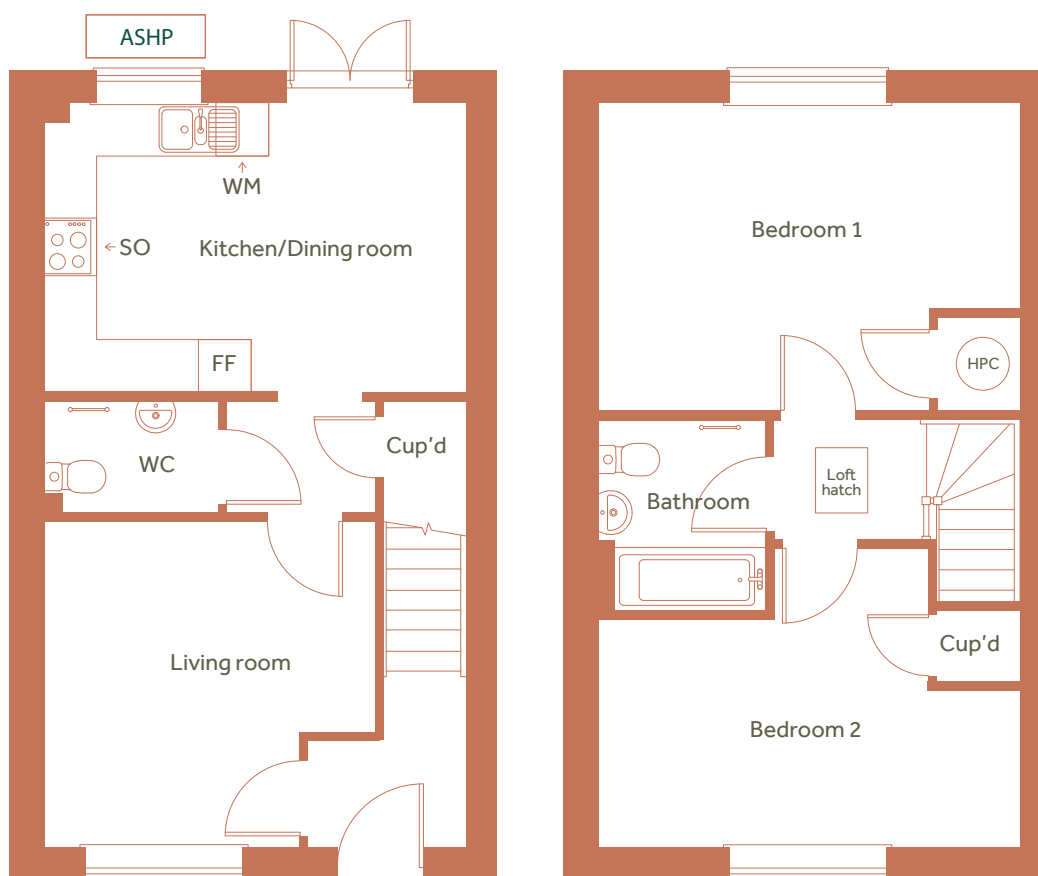


C = Cupboard, WC = Water Closet, HPC = Heat Pump Cylinder, FF = Fridge Freezer, WM = Washing Machine, SO = Integrated single oven

Floor plans shown are indicative only. All room sizes are approximate with maximum dimensions of finished items of furniture. Room layouts may be subject to minor modifications. Furniture, kitchen and bathroom layouts shown are indicative only. Measurement at widest point.

Two bedroom mid-terraced house

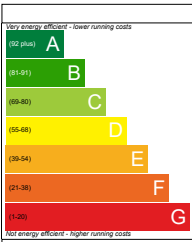
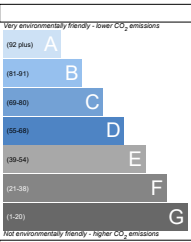
22 Forty Acres Lane, West Malling



ASHP = Air source heat pump

Please speak to the sales executive for more information

Total Internal Area	79 sq m
Kitchen / Dining area	3.2m x 4.7m
Living	3.6m x 3.7m
Bedroom 1	3.4m x 4.7m
Bedroom 2	2.5m x 4.7m

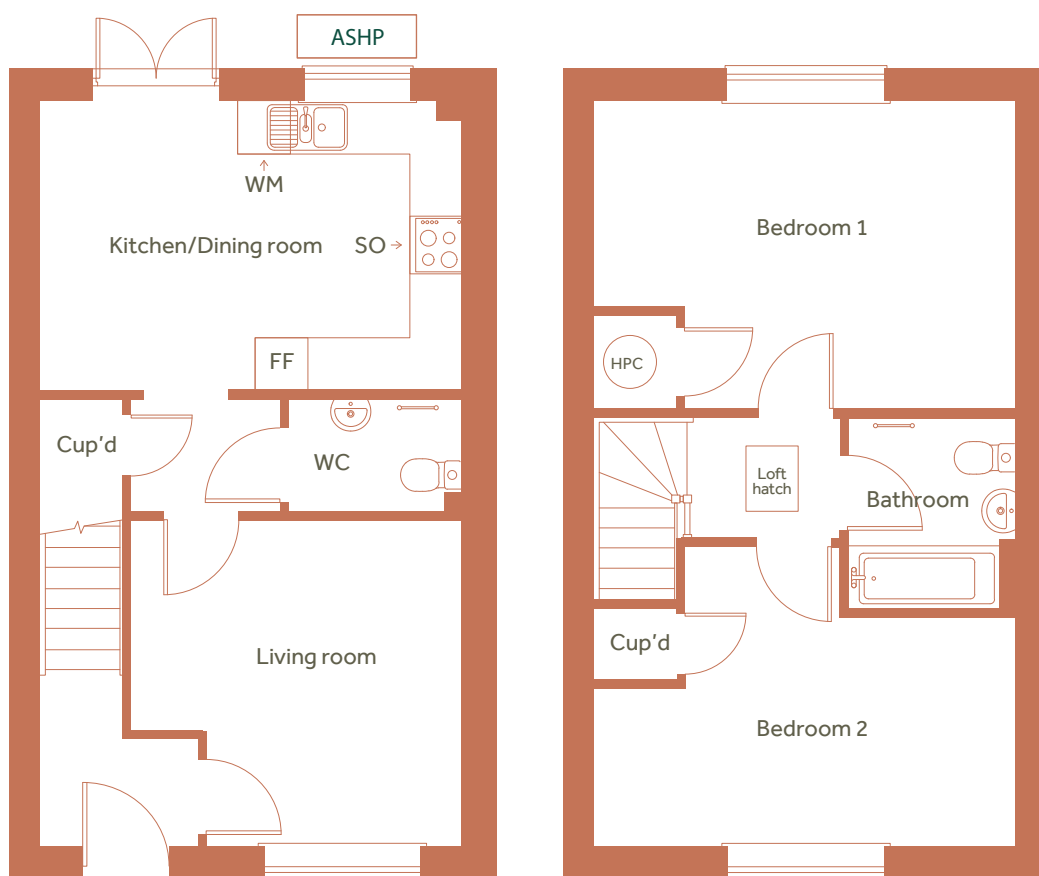
Energy Efficiency Rating	Environmental Impact (CO ₂) Rating
 <p>Very energy efficient - lower running costs</p> <p>A B C D E F G</p> <p>90</p> <p>EU Directive 2002/91/EC</p> <p>England</p>	 <p>Very environmentally friendly - lower CO₂ emissions</p> <p>A B C D E F G</p> <p>92</p> <p>EU Directive 2002/91/EC</p> <p>England</p>

C = Cupboard, WC = Water Closet, HPC = Heat Pump Cylinder, FF = Fridge Freezer, WM = Washing Machine, SO = Integrated single oven

Floor plans shown are indicative only. All room sizes are approximate with maximum dimensions of finished items of furniture. Room layouts may be subject to minor modifications. Furniture, kitchen and bathroom layouts shown are indicative only. Measurement at widest point.

Two bedroom mid-terraced house

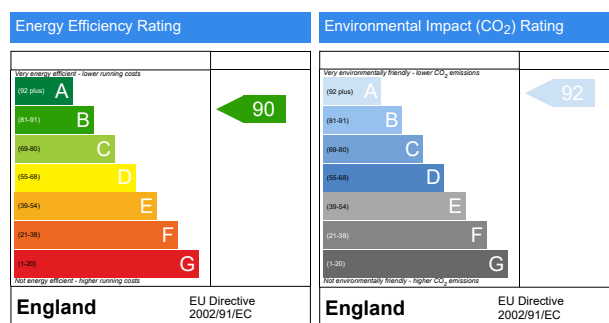
24 Forty Acres Lane, West Malling



ASHP = Air source heat pump

Please speak to the sales executive for more information

Total Internal Area	79 sq m
Kitchen / Dining area	3.2m x 4.7m
Living	3.6m x 3.7m
Bedroom 1	3.4m x 4.7m
Bedroom 2	2.5m x 4.7m

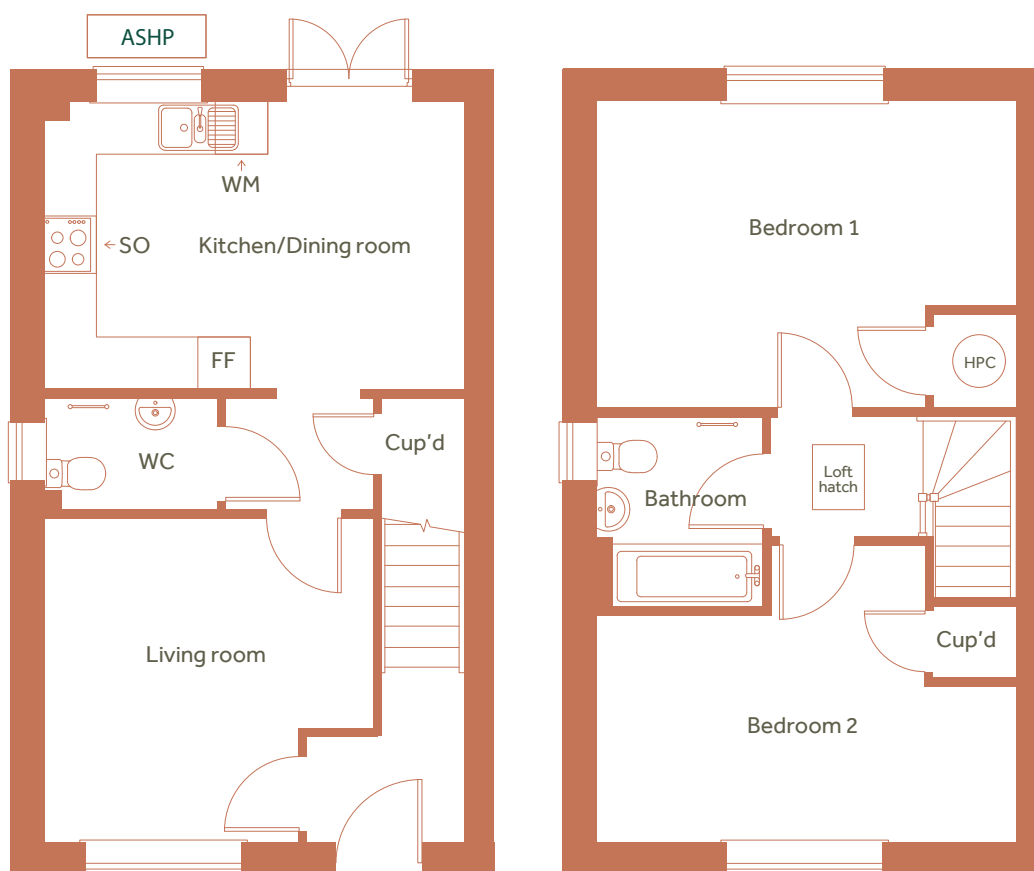


C = Cupboard, WC = Water Closet, HPC = Heat Pump Cylinder, FF = Fridge Freezer, WM = Washing Machine, SO = Integrated single oven

Floor plans shown are indicative only. All room sizes are approximate with maximum dimensions of finished items of furniture. Room layouts may be subject to minor modifications. Furniture, kitchen and bathroom layouts shown are indicative only. Measurement at widest point.

Two bedroom end of terraced house

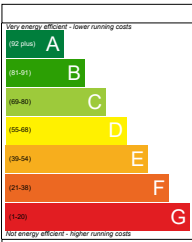
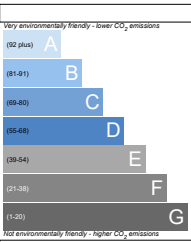
26 Forty Acres Lane, West Malling



ASHP = Air source heat pump

Please speak to the sales executive for more information

Total Internal Area	79 sq m
Kitchen / Dining area	3.2m x 4.7m
Living	3.6m x 3.7m
Bedroom 1	3.4m x 4.7m
Bedroom 2	2.5m x 4.7m

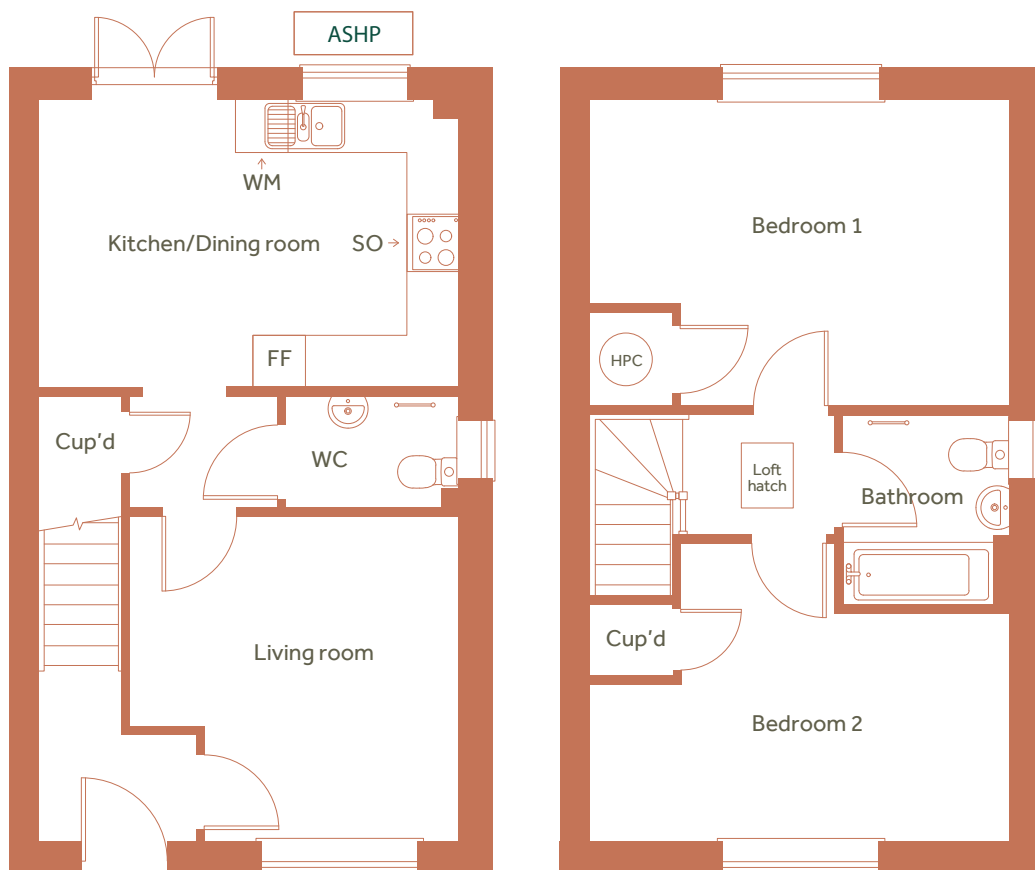
Energy Efficiency Rating	Environmental Impact (CO ₂) Rating
 <p>Very energy efficient - lower running costs</p> <p>A (92 plus)</p> <p>B (81-91)</p> <p>C (69-80)</p> <p>D (55-68)</p> <p>E (39-54)</p> <p>F (21-38)</p> <p>G (1-20)</p> <p>Not energy efficient - higher running costs</p> <p>England</p> <p>EU Directive 2002/91/EC</p>	 <p>Very environmentally friendly - lower CO₂ emissions</p> <p>A (52 plus)</p> <p>B (41-51)</p> <p>C (30-40)</p> <p>D (20-30)</p> <p>E (10-20)</p> <p>F (1-10)</p> <p>G (0-10)</p> <p>Not environmentally friendly - higher CO₂ emissions</p> <p>England</p> <p>EU Directive 2002/91/EC</p>

C = Cupboard, WC = Water Closet, HPC = Heat Pump Cylinder, FF = Fridge Freezer, WM = Washing Machine, SO = Integrated single oven

Floor plans shown are indicative only. All room sizes are approximate with maximum dimensions of finished items of furniture. Room layouts may be subject to minor modifications. Furniture, kitchen and bathroom layouts shown are indicative only. Measurement at widest point.

Two bedroom semi-detached house

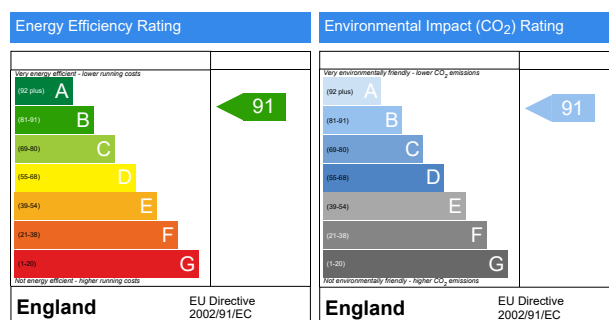
34 Forty Acres Lane, West Malling



ASHP = Air source heat pump

Please speak to the sales executive for more information

Total Internal Area	79 sq m
Kitchen / Dining area	3.2m x 4.7m
Living	3.6m x 3.7m
Bedroom 1	3.4m x 4.7m
Bedroom 2	2.5m x 4.7m

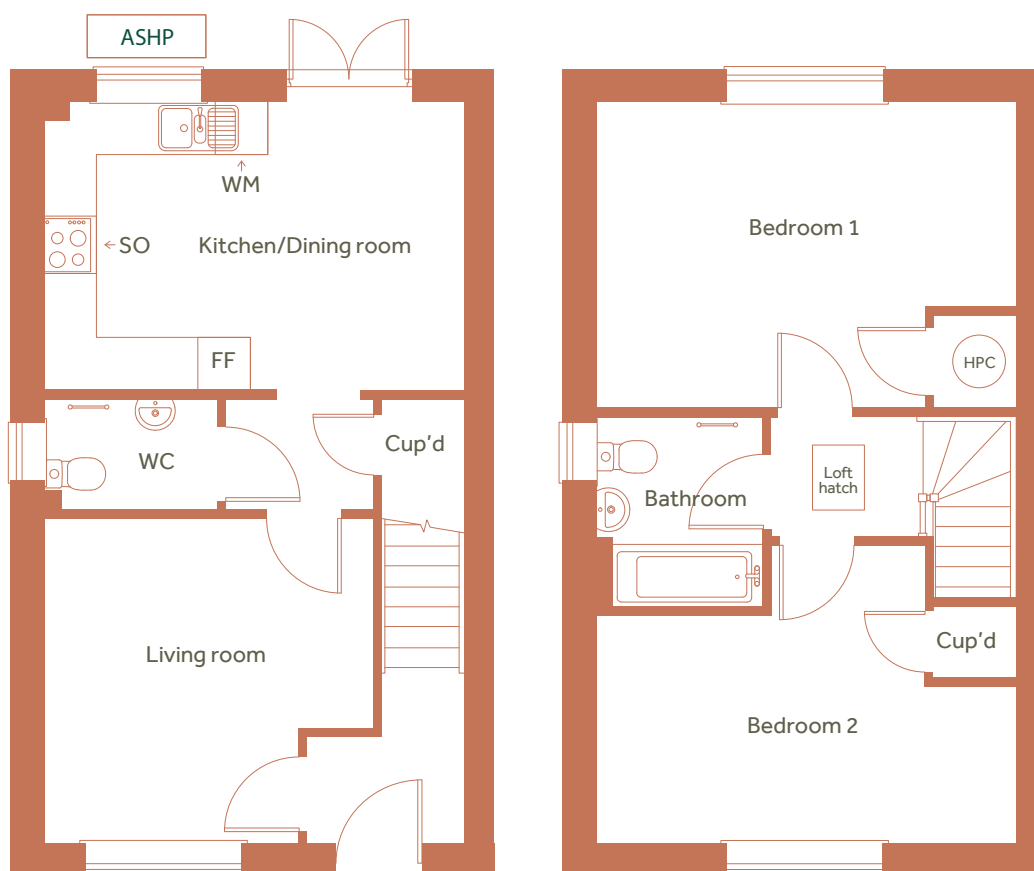


C = Cupboard, WC = Water Closet, HPC = Heat Pump Cylinder, FF = Fridge Freezer, WM = Washing Machine, SO = Integrated single oven

Floor plans shown are indicative only. All room sizes are approximate with maximum dimensions of finished items of furniture. Room layouts may be subject to minor modifications. Furniture, kitchen and bathroom layouts shown are indicative only. Measurement at widest point.

Two bedroom semi-detached house

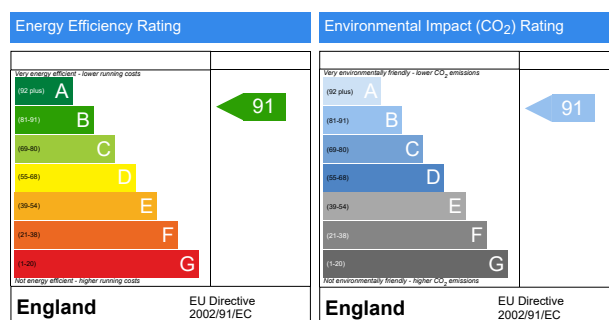
36 Forty Acres Lane, West Malling



ASHP = Air source heat pump

Please speak to the sales executive for more information

Total Internal Area	79 sq m
Kitchen / Dining area	3.2m x 4.7m
Living	3.6m x 3.7m
Bedroom 1	3.4m x 4.7m
Bedroom 2	2.5m x 4.7m



C = Cupboard, WC = Water Closet, HPC = Heat Pump Cylinder, FF = Fridge Freezer, WM = Washing Machine, SO = Integrated single oven

Floor plans shown are indicative only. All room sizes are approximate with maximum dimensions of finished items of furniture. Room layouts may be subject to minor modifications. Furniture, kitchen and bathroom layouts shown are indicative only. Measurement at widest point.