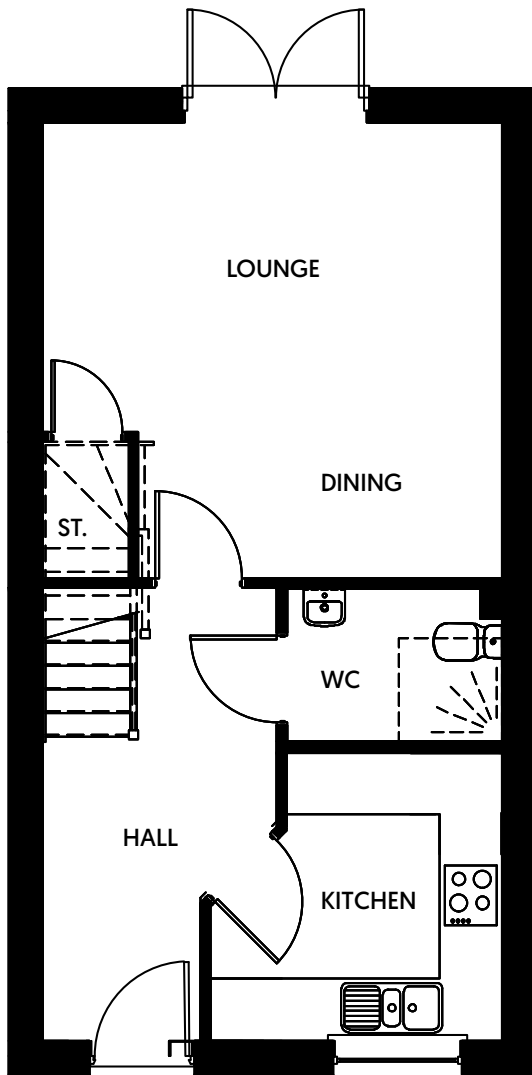


# Queen's Meadow, Shavington

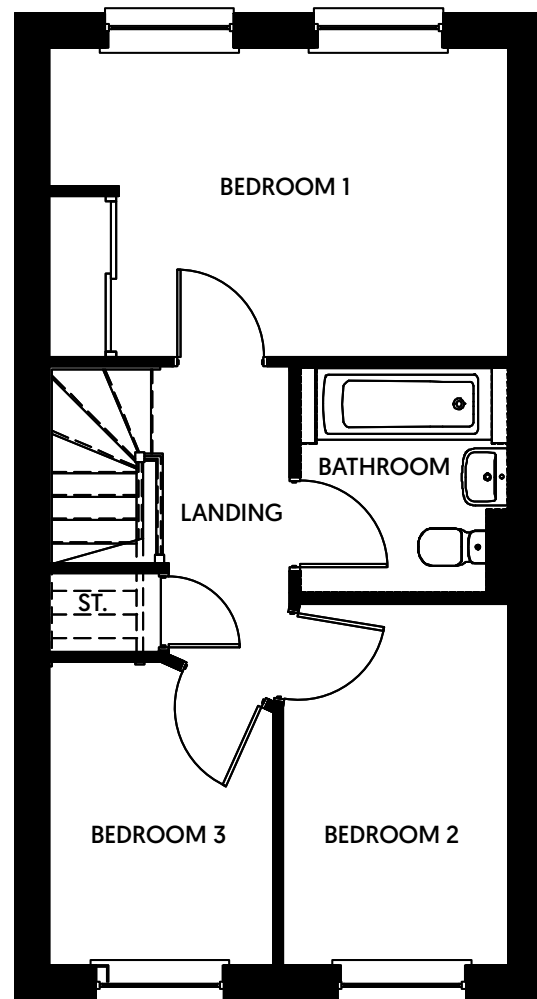


prospera  
HOMES

The Moxley Floor Plan  
3 bedrooms



**Ground Floor**



**First Floor**

| Room          | Dimensions      |
|---------------|-----------------|
| Kitchen       | 2807mm x 2864mm |
| Lounge/Dining | 4423mm x 4500mm |
| W/C           | 1501mm x 2230mm |
| Bedroom 1     | 3022mm x 4500mm |
| Bedroom 2     | 3573mm x 2121mm |
| Bedroom 3     | 2970mm x 2095mm |
| Bathroom      | 2150mm x 2121mm |

Floor plans are for illustrative purposes only. Layouts/window locations will vary depending on orientation on the site. Purchasers should take their own measurements before ordering flooring, furniture and fittings.