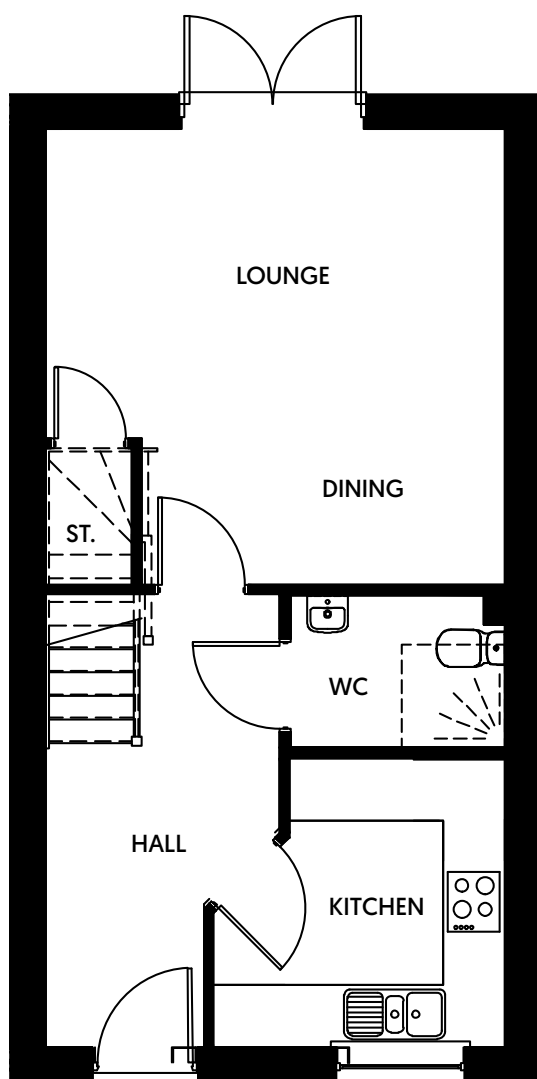


# Queen's Meadow, Shavington

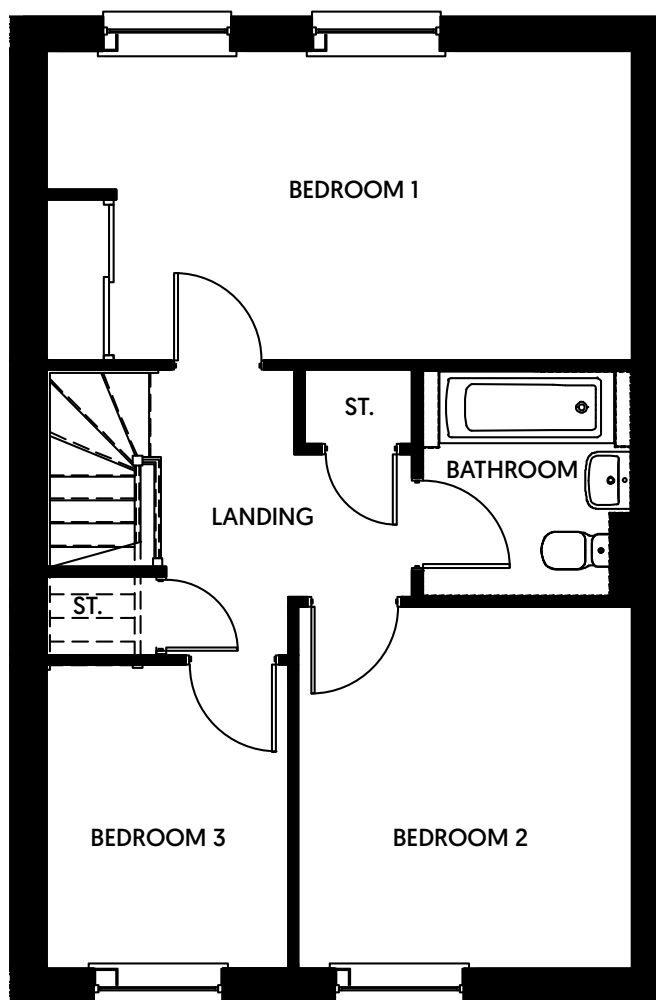


prospera  
HOMES

## The Mowsley Floor Plan 3 bedrooms



**Ground Floor**



**First Floor**

Room	Dimensions
Kitchen	2832mm x 2890mm
Lounge/Dining	4411mm x 4500mm
W/C	1489 mm x 2229mm
Bedroom 1	2998mm x 5766mm
Bedroom 2	3564mm x 3306mm
Bedroom 3	2970mm x 2365mm
Bathroom	2174mm x 1925mm

Floor plans are for illustrative purposes only. Layouts/window locations will vary depending on orientation on the site. Purchasers should take their own measurements before ordering flooring, furniture and fittings.