

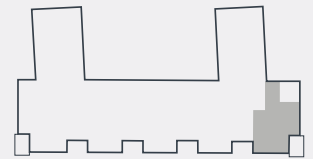
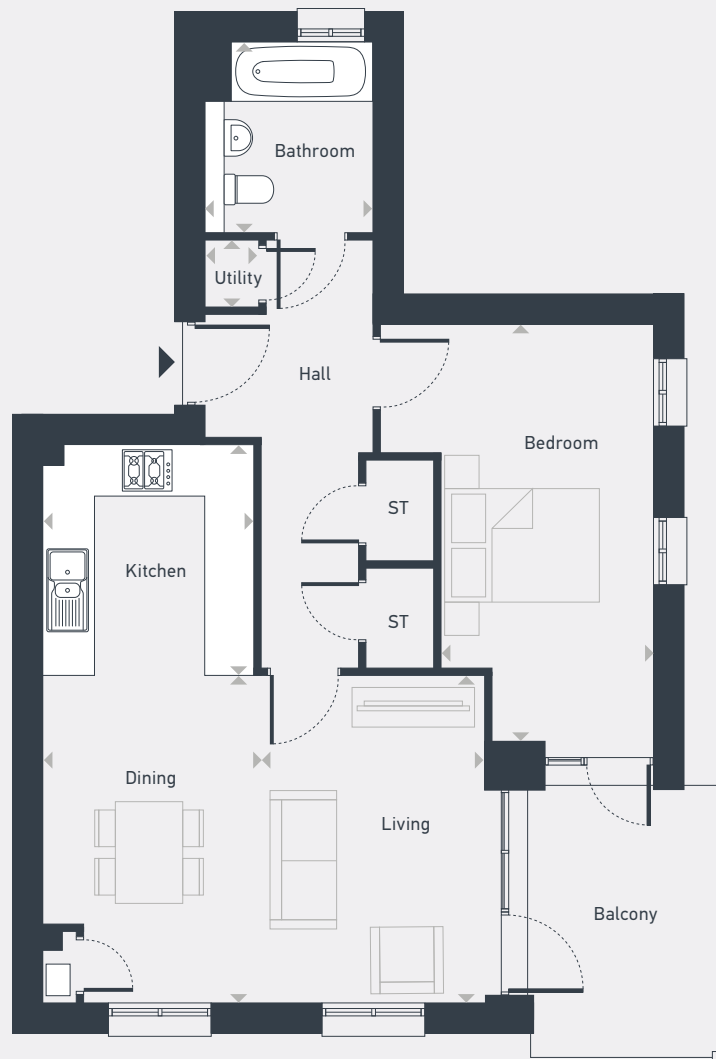
Barton Park

Block G – The Mansfield 1 bedroom apartment



As drawn: Plot 282 - Ground Floor

58 sq. m / 623 sq. ft



ST: Store

DIMENSIONS	m	ft
Kitchen	2.78m x 2.54m	9'1" x 8'4"
Living	3.93m x 2.78m	12'10" x 9'1"
Dining	3.93m x 2.54m	12'10" x 8'4"
Bedroom	4.99m x 3.31m	16'4" x 10'10"
Bathroom	2.28m x 1.99m	7'5" x 6'6"
Utility	0.82m x 0.64m	2'8" x 2'1"



01865 575970 | beckleyplace@placesforpeople.co.uk
Beckley Place, Off Barton Fields Road, Oxford OX3 9FU