

Brook Place

Frittenden

lovelivinghomes



Artistic impression. Elevation treatments are subject to change.

Brook Place in an exclusive new development located in the picturesque village of Frittenden. Luxurious 2-bedroom homes have been thoughtfully designed to provide modern comfort in an intimate, peaceful setting.



Brook Place Site plan

Love Living Homes
2 bed houses



This site plan depicts the intended layout and development mix at the time of creation and is for orientation purposes and may be subject to change. Parking, landscaping, finished locations and materials are all for guidance only.

Brook Place
Cranbrook Rd,
Frittenden,
Cranbrook
TN17 2DB

Plot 13

2 Bedroom House

Wheelchair adaptable layout including space for future lift



94.2sqm / 1014sqft



2 Bedrooms



1 Bathroom



DIMENSIONS

LIVING & DINING

5399mm x 3283mm - 17'8" x 10'9"

KITCHEN

3298mm x 2787mm - 10'10" x 9'2"

BEDROOM 1

5399mm x 3283mm - 17'8" x 10'9"

BEDROOM 2

5399mm x 2011mm - 17'8" x 6'7"

Please note that all dimensions shown are for guidance only and maximum measurements are shown where necessary. Plans should not be used for furniture or other fittings. Furniture shown is for illustrative purposes only and not included. Individual units may vary according to location – please consult your sales advisor for more details

Plot 16

2 Bedroom House



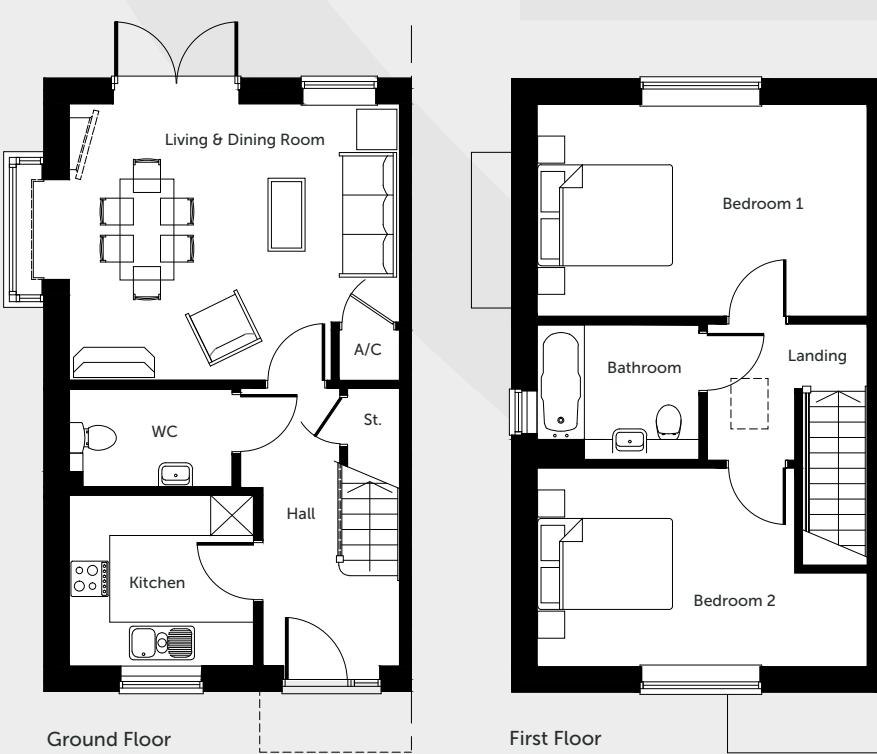
82.6 sqm / 889 sqft



2 Bedrooms



1 Bathroom



DIMENSIONS

LIVING & DINING

4929mm x 4146mm - 16'2" x 13'7"

KITCHEN

2781mm x 2574mm - 9'1" x 8'5"

BEDROOM 1

4949mm x 3185mm - 16'3" x 10'5"



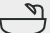
BEDROOM 2

4949mm x 2985mm - 16'3" x 9'9"

Please note that all dimensions shown are for guidance only and maximum measurements are shown where necessary. Plans should not be used for furniture or other fittings. Furniture shown is for illustrative purposes only and not included. Individual units may vary according to location – please consult your sales advisor for more details

Plot 17

2 Bedroom House

- 
81.8sqm / 880sqft
- 
2 Bedrooms
- 
1 Bathroom



DIMENSIONS

LIVING & DINING	BEDROOM 1
4929mm x 4146mm - 16'2" x 13'7"	4949mm x 3185mm - 16'3" x 10'5"
KITCHEN	BEDROOM 2
2781mm x 2574mm - 9'1" x 8'5"	4949mm x 2985mm - 16'3" x 9'9"

Please note that all dimensions shown are for guidance only and maximum measurements are shown where necessary. Plans should not be used for furniture or other fittings. Furniture shown is for illustrative purposes only and not included. Individual units may vary according to location – please consult your sales advisor for more details



Computer generated image of Plot 16

Specification

All our homes at Brook Place include generous specifications to make life as comfortable and convenient as can be.

KITCHEN

- Contemporary onyx grey kitchen units with Calacatta marble effect worktops
- Glass splash back & extractor fan
- 1.5 Stainless steel sink with pop up waste and pull out strainer
- Electric Fan Oven (integrated)
- 4 ring induction hob
- Integrated fridge/freezer, dishwasher, washing machine
- Energy efficient downlights to kitchen and bathroom

BATHROOM

- Contemporary Calacatta Blanco tiled bathroom suite with chrome fittings
- Shower over bath with glass screen
- White ceramic semi-recessed pedestal sink
- Chrome straight ladder towel rail

INTERIOR & DECORATION

- Double glazing with easy clean hinges
- Air source heat pumps with water storage facility
- TV / fibre broadband connection points
- Back garden outdoor taps
- White emulsion to walls and ceilings and white satin to woodwork
- Textured, Allstar 4420 wood effect vinyl floorings to kitchen & hallways
- Soft 152 silver carpet to living and bedroom areas
- Storage solutions
- Underfloor heating on the ground floor
- Mains smoke and heat detectors

EXTERIOR

- Private parking
- Private turfed gardens
- Surrounded by green spaces and enclosed development
- EV chargers
- Outdoor lighting in front and rear property
- Outdoor taps and sockets

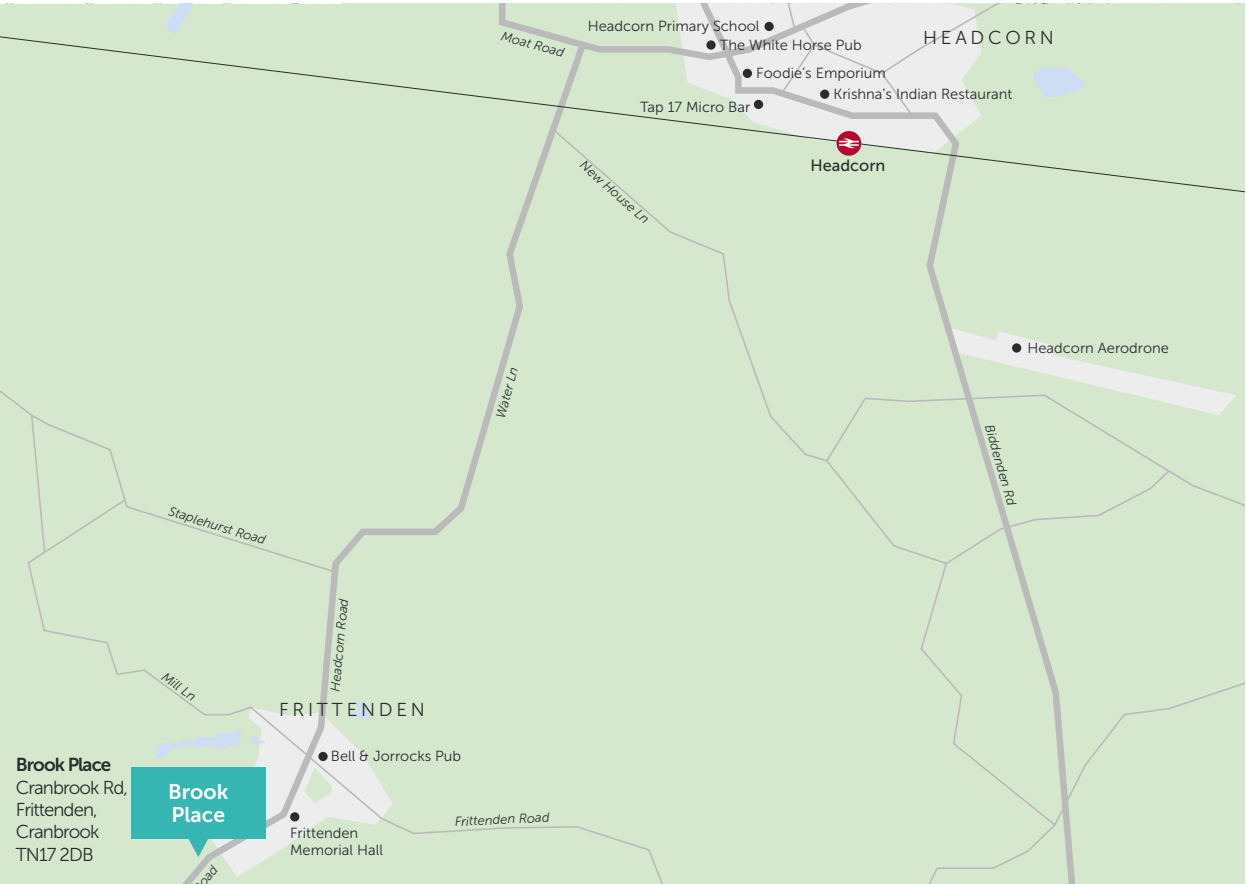
WARRANTY

- All Love Living Homes are backed by a full 10-year LABC warranty to provide peace of mind, and help you relax knowing that there’s help if you need it!



Computer generated image.

Location and local amenities



SERVICE CHARGES

It is important to understand how service charges work, are calculated and charged and your rights and responsibilities. We aim to be transparent with you about the costs involved in being a leaseholder, as buying your new home is a big financial decision.

See more on service charges



RENT INCREASES

When buying a shared ownership property, you purchased between 10-75% of the market value, and pay a monthly rent on the rest of the share. The Rent Review Date is set out in the ‘Summary of costs’ document and in your lease. Your rental amount will increase annually as per the terms of your lease. If you staircase (buy more shares) then the rent will reduce according the share you own.

See more on rent increases



Reserving your chosen plot

There’s nothing more exciting than taking that first step onto the home ownership ladder, and at Love Living Homes, we aim to make that journey as straightforward and enjoyable as possible.

To register your interest or to find out more information, please email us at buy@lovelivinghomes.co.uk



See our reservation process

Please note that this development also has restrictive covenants. Speak to the sales team for more information.

Specifications are correct at time of going to print but are for guidance only and remain subject to change.
Exact fittings and finishes are subject to availability at the time of installation. Please consult the sales advisor for more details.

Monson House, Monson Way,
Tunbridge Wells, Kent TN1 1LQ
lovelivinghomes.co.uk





lovelivinghomes

Love Living Homes is the trading name of

