



PERRY
BARR
VILLAGE
BIRMINGHAM

Birchfield Collection
BLOCK B

1 & 2 Bedroom
Shared Ownership
Apartments

Site OVERVIEW

PODIUM LEVEL

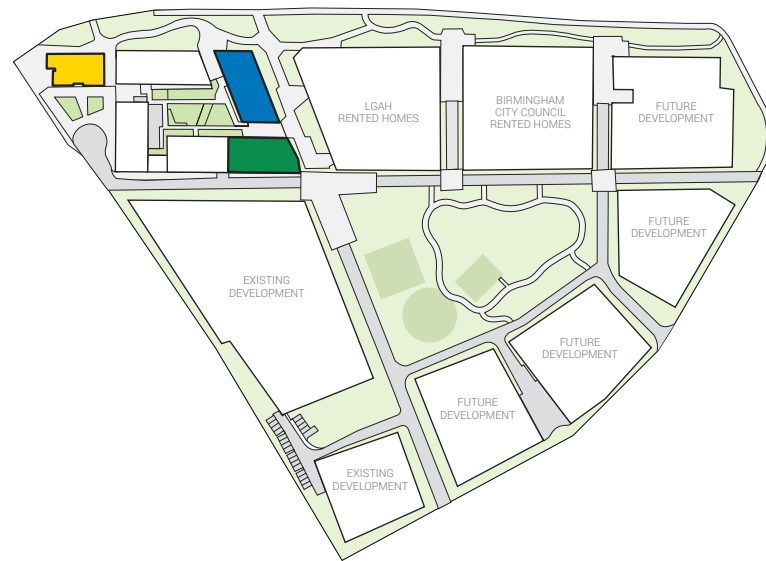


Birchfield Collection 1 & 2 BEDROOM APARTMENTS

[VIEW FLOORPLANS >](#)

[PRICES & AVAILABILITY](#)

FULL DEVELOPMENT



ALSO AVAILABLE
Erdington Collection
1 & 2 BEDROOM APARTMENTS

ALSO AVAILABLE
Aldridge Collection
1 & 2 BEDROOM APARTMENTS

LGAH
RENTED HOMES

LGAH
RENTED HOMES

LGAH
RENTED HOMES

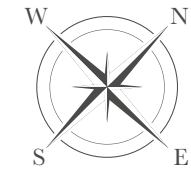
BLOCK B
Birchfield Collection

EXISTING
DEVELOPMENT

The development layout does not show details of gradients of land, boundary treatments, local authority street lighting or landscaping and is for illustrative purposes only. Trees, planting and public open spaces shown are indicative. The site plan does not form any part of a warranty or contract. Please speak to a Sales Consultant for more details.

Site PARKING & UTILITIES

SITUATED ON
GROUND FLOOR



ALSO AVAILABLE
Erdington Collection
1 & 2 BEDROOM APARTMENTS



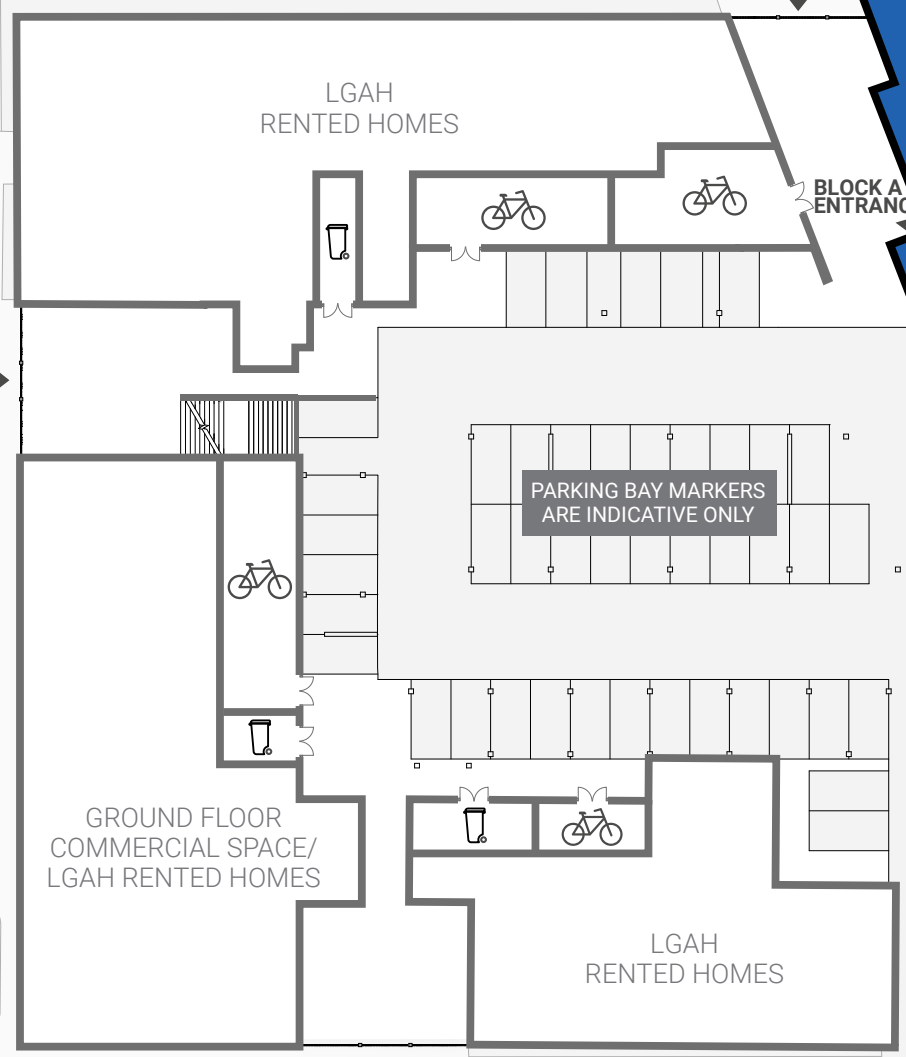
Birchfield Collection
1 & 2 BEDROOM APARTMENTS

[VIEW FLOORPLANS >](#)

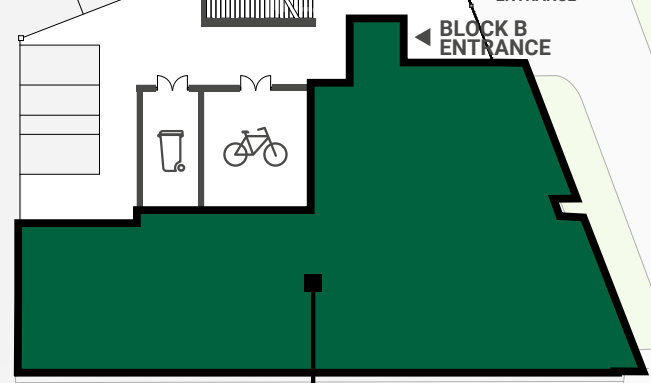
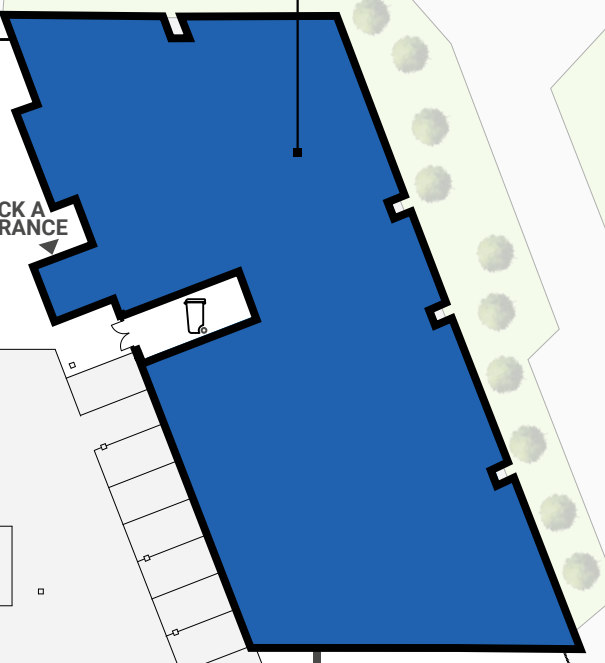
[PRICES & AVAILABILITY](#)

- Key**
- Bin Store
 - Cycle Store

The development layout does not show details of gradients of land, boundary treatments, local authority street lighting or landscaping and is for illustrative purposes only. Trees, planting and public open spaces shown are indicative. The site plan does not form any part of a warranty or contract. Please speak to a Sales Consultant for more details.



ALSO AVAILABLE
Aldridge Collection
1 & 2 BEDROOM APARTMENTS



BLOCK B
Birchfield Collection

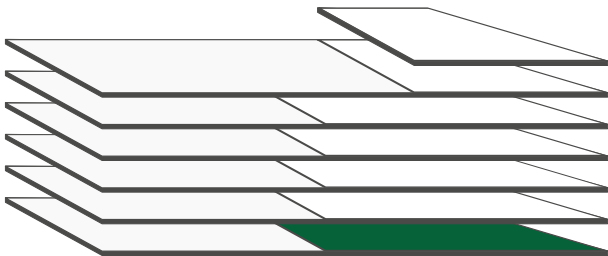
EXISTING
DEVELOPMENT

Ground Floor

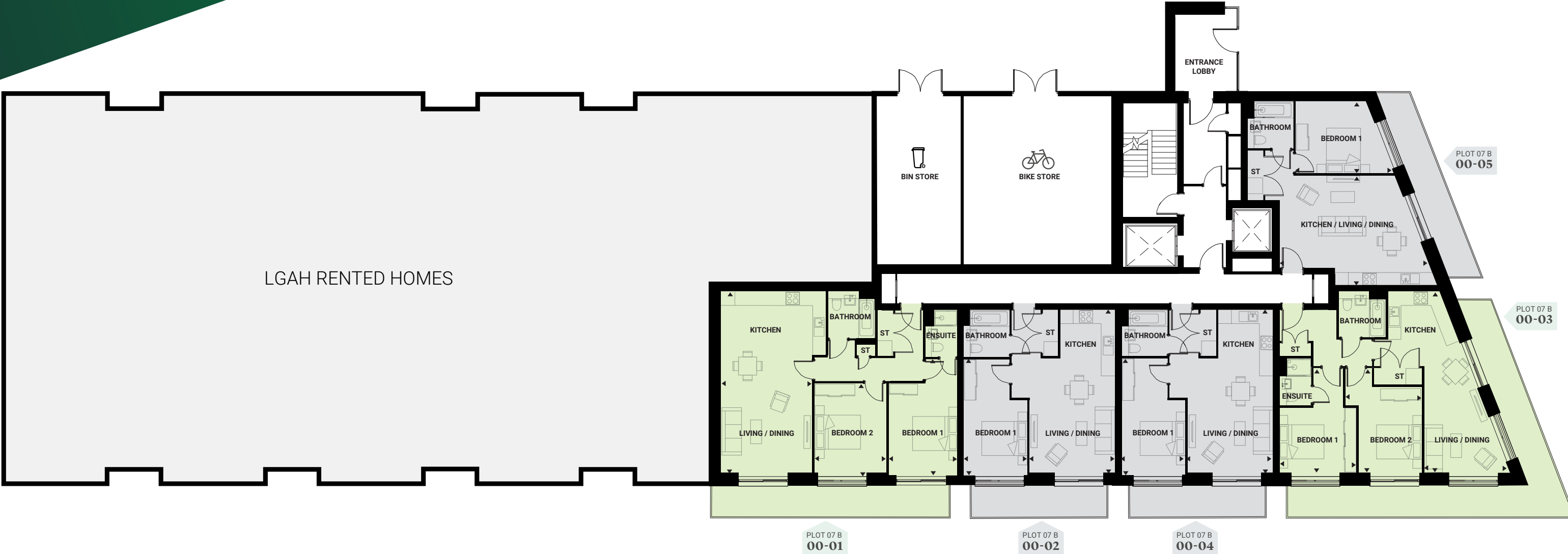
BIRCHFIELD COLLECTION



Key
ST Store



GROUND



1 Bedroom

PLOT 07 B 00-02		Length Width		PLOT 07 B 00-04		Length Width	
Kitchen	2.50m x 2.70m	8'2" x 8'10"		Kitchen	2.50m x 2.70m	8'2" x 8'10"	
Living/Dining Room	3.87m x 4.81m	12'8" x 15'9"		Living/Dining Room	3.87m x 4.81m	12'8" x 15'9"	
Bedroom	2.89m x 5.26m	9'5" x 17'3"		Bedroom	2.89m x 5.26m	9'5" x 17'3"	
Total Area	52.1 sq m	560 sq ft		Total Area	52.1 sq m	560 sq ft	

PLOT 07 B 00-05		Length Width	
Kitchen/Living/Dining Room	6.87m x 3.87m	22'6" x 12'8"	
Bedroom	4.60m x 3.62m	15'1" x 11'10"	
Total Area	51.8 sq m	557 sq ft	

2 Bedrooms

PLOT 07 B 00-01		Length Width		PLOT 07 B 00-03		Length Width	
Kitchen	4.79m x 2.90m	15'8" x 9'5"		Kitchen	3.24m x 2.20m	10'7" x 7'2"	
Living/Dining Room	4.19m x 5.41m	13'8" x 17'8"		Living/Dining Room	3.95m x 5.83m	12'11" x 19'1"	
Bedroom 1	3.13m x 4.16m	10'3" x 13'7"		Bedroom 1	3.50m x 3.11m	11'5" x 10'2"	
Bedroom 2	3.27m x 4.15m	10'8" x 13'7"		Bedroom 2	2.88m x 3.95m	9'5" x 12'11"	
Total Area	87.0 sq m	936 sq ft		Total Area	72.5 sq m	780 sq ft	

SITE PLAN

NEXT FLOOR >



PRICES & AVAILABILITY

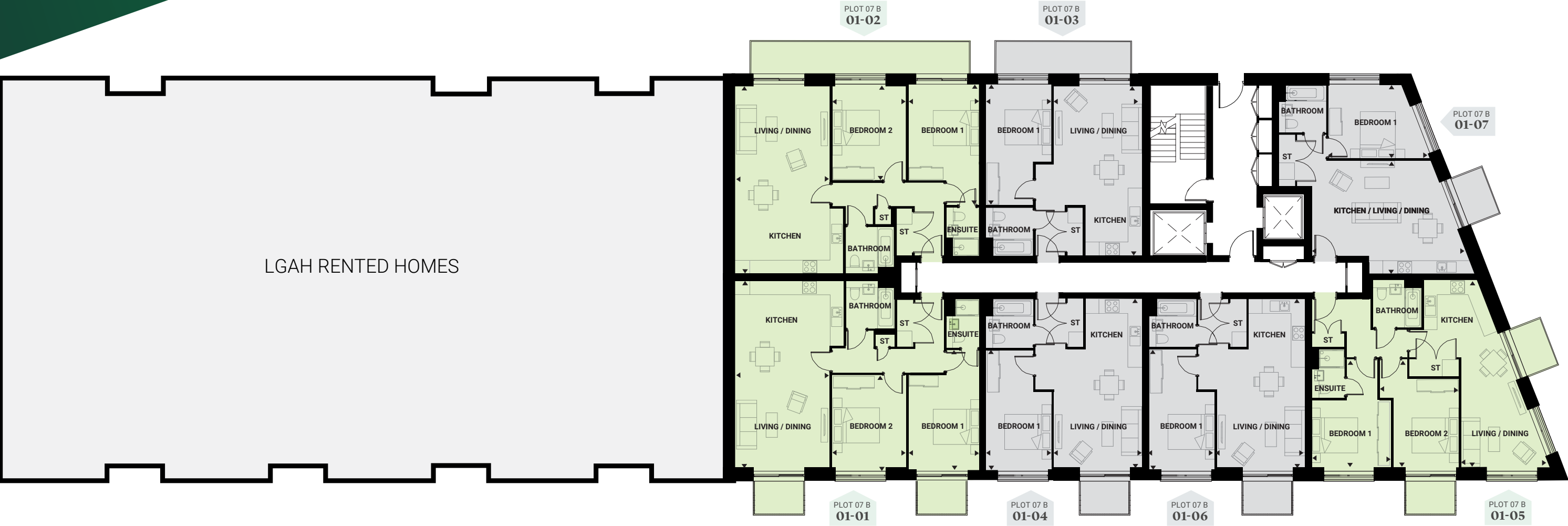
The specification has been compiled with best intentions to provide a guide to the finishes, however, houses are sold as seen and we recommend customers satisfy themselves as to the specification and finishes installed to each home.

First Floor

BIRCHFIELD COLLECTION



Key
ST Store



1 Bedroom

PLOT 07 B 01-03			Length Width	
Kitchen	2.50m x 2.70m	8'2" x 8'10"		
Living/Dining Room	3.87m x 4.81m	12'8" x 15'9"		
Bedroom	2.89m x 5.26m	9'5" x 17'3"		
Total Area	52.1 sq m	560 sq ft		

PLOT 07 B 01-06			Length Width	
Kitchen	2.50m x 2.70m	8'2" x 8'10"		
Living/Dining Room	3.87m x 4.81m	12'8" x 15'9"		
Bedroom	2.89m x 5.26m	9'5" x 17'3"		
Total Area	52.1 sq m	560 sq ft		

PLOT 07 B 01-04			Length Width	
Kitchen	2.50m x 2.70m	8'2" x 8'10"		
Living/Dining Room	3.87m x 4.81m	12'8" x 15'9"		
Bedroom	2.89m x 5.26m	9'5" x 17'3"		
Total Area	52.1 sq m	560 sq ft		

PLOT 07 B 01-07			Length Width	
Kitchen/Living/ Dining Room	6.87m x 3.87m	22'6" x 12'8"		
Bedroom	4.60m x 3.62m	15'1" x 11'10"		
Total Area	51.5 sq m	554 sq ft		

2 Bedrooms

PLOT 07 B 01-01			Length Width	
Kitchen	4.79m x 2.90m	15'8" x 9'5"		
Living/Dining Room	4.19m x 5.41m	13'8" x 17'8"		
Bedroom 1	3.13m x 4.16m	10'3" x 13'7"		
Bedroom 2	3.27m x 4.15m	10'8" x 13'7"		
Total Area	87.1 sq m	937 sq ft		

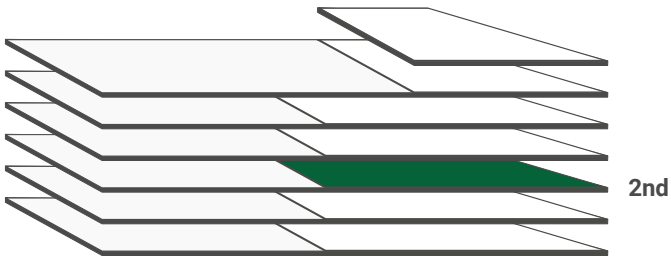
PLOT 07 B 01-05			Length Width	
Kitchen	3.24m x 2.20m	10'7" x 7'2"		
Living/Dining Room	3.95m x 5.83m	12'11" x 19'1"		
Bedroom 1	3.50m x 3.11m	11'5" x 10'2"		
Bedroom 2	2.88m x 3.95m	9'5" x 12'11"		
Total Area	72.6 sq m	781 sq ft		

PLOT 07 B 01-02			Length Width	
Kitchen	4.79m x 2.90m	15'8" x 9'5"		
Living/Dining Room	4.19m x 5.41m	13'8" x 17'8"		
Bedroom 1	3.13m x 4.16m	10'3" x 13'7"		
Bedroom 2	3.27m x 4.15m	10'8" x 13'7"		
Total Area	87.2 sq m	938 sq ft		

Second Floor
BIRCHFIELD COLLECTION



Key
ST Store



1 Bedroom

PLOT 07 B 02-03			PLOT 07 B 02-04		
Length Width			Length Width		
Kitchen	2.50m x 2.70m	8'2" x 8'10"	Kitchen	2.50m x 2.70m	8'2" x 8'10"
Living/Dining Room	3.87m x 4.81m	12'8" x 15'9"	Living/Dining Room	3.87m x 4.81m	12'8" x 15'9"
Bedroom	2.89m x 5.26m	9'5" x 17'3"	Bedroom	2.89m x 5.26m	9'5" x 17'3"
Total Area	52.1 sq m	560 sq ft	Total Area	52.1 sq m	560 sq ft

PLOT 07 B 02-05			PLOT 07 B 02-07		
Length Width			Length Width		
Kitchen	2.50m x 2.70m	8'2" x 8'10"	Kitchen/Living/ Dining Room	6.87m x 3.87m	22'6" x 12'8"
Living/Dining Room	3.87m x 4.81m	12'8" x 15'9"	Bedroom	4.60m x 3.62m	15'1" x 11'10"
Bedroom	2.89m x 5.26m	9'5" x 17'3"	Total Area	51.5 sq m	554 sq ft
Total Area	52.1 sq m	560 sq ft			

2 Bedrooms

PLOT 07 B 02-01			PLOT 07 B 02-02		
Length Width			Length Width		
Kitchen	4.79m x 2.90m	15'8" x 9'5"	Kitchen	4.79m x 2.90m	15'8" x 9'5"
Living/Dining Room	4.19m x 5.41m	13'8" x 17'8"	Living/Dining Room	4.19m x 5.41m	13'8" x 17'8"
Bedroom 1	3.13m x 4.16m	10'3" x 13'7"	Bedroom 1	3.13m x 4.16m	10'3" x 13'7"
Bedroom 2	3.27m x 4.15m	10'8" x 13'7"	Bedroom 2	3.27m x 4.15m	10'8" x 13'7"
Total Area	87.1 sq m	937 sq ft	Total Area	87.2 sq m	938 sq ft

PLOT 07 B 02-06		
Length Width		
Kitchen	3.24m x 2.20m	10'7" x 7'2"
Living/Dining Room	3.95m x 5.83m	12'11" x 19'1"
Bedroom 1	3.50m x 3.11m	11'5" x 10'2"
Bedroom 2	2.88m x 3.95m	9'5" x 12'11"
Total Area	72.6 sq m	781 sq ft

The specification has been compiled with best intentions to provide a guide to the finishes, however, houses are sold as seen and we recommend customers satisfy themselves as to the specification and finishes installed to each home.

SITE PLAN

◀ PREVIOUS FLOOR

NEXT FLOOR ▶

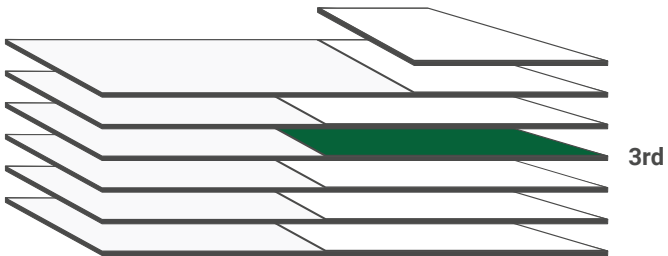
🔑 PRICES & AVAILABILITY

Third Floor

BIRCHFIELD COLLECTION



Key
ST Store



3rd

LG&H RENTED HOMES

1 Bedroom

PLOT 07 B 03-03			Length Width	
Kitchen	2.50m x 2.70m	8'2" x 8'10"		
Living/Dining Room	3.87m x 4.81m	12'8" x 15'9"		
Bedroom	2.89m x 5.26m	9'5" x 17'3"		
Total Area	52.1 sq m	560 sq ft		

PLOT 07 B 03-05			Length Width	
Kitchen	2.50m x 2.70m	8'2" x 8'10"		
Living/Dining Room	3.87m x 4.81m	12'8" x 15'9"		
Bedroom	2.89m x 5.26m	9'5" x 17'3"		
Total Area	52.1 sq m	560 sq ft		

PLOT 07 B 03-04			Length Width	
Kitchen	2.50m x 2.70m	8'2" x 8'10"		
Living/Dining Room	3.87m x 4.81m	12'8" x 15'9"		
Bedroom	2.89m x 5.26m	9'5" x 17'3"		
Total Area	52.1 sq m	560 sq ft		

PLOT 07 B 03-07			Length Width	
Kitchen/Living/ Dining Room	6.87m x 3.87m	22'6" x 12'8"		
Bedroom	4.60m x 3.62m	15'1" x 11'10"		
Total Area	51.5 sq m	554 sq ft		

2 Bedrooms

PLOT 07 B 03-01			Length Width	
Kitchen	4.79m x 2.90m	15'8" x 9'5"		
Living/Dining Room	4.19m x 5.41m	13'8" x 17'8"		
Bedroom 1	3.13m x 4.16m	10'3" x 13'7"		
Bedroom 2	3.27m x 4.15m	10'8" x 13'7"		
Total Area	87.1 sq m	937 sq ft		

PLOT 07 B 03-06			Length Width	
Kitchen	3.24m x 2.20m	10'7" x 7'2"		
Living/Dining Room	3.95m x 5.83m	12'11" x 19'1"		
Bedroom 1	3.50m x 3.11m	11'5" x 10'2"		
Bedroom 2	2.88m x 3.95m	9'5" x 12'11"		
Total Area	72.6 sq m	781 sq ft		

PLOT 07 B 03-02			Length Width	
Kitchen	4.79m x 2.90m	15'8" x 9'5"		
Living/Dining Room	4.19m x 5.41m	13'8" x 17'8"		
Bedroom 1	3.13m x 4.16m	10'3" x 13'7"		
Bedroom 2	3.27m x 4.15m	10'8" x 13'7"		
Total Area	87.2 sq m	938 sq ft		

SITE PLAN

◀ PREVIOUS FLOOR

NEXT FLOOR ▶

🔑 PRICES & AVAILABILITY

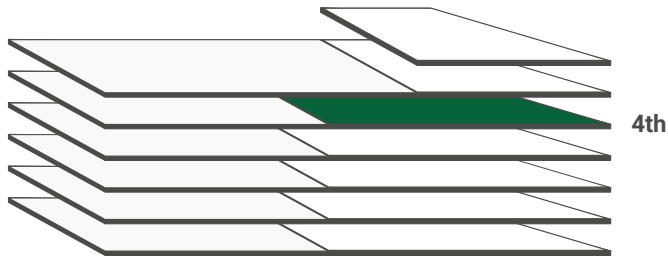
The specification has been compiled with best intentions to provide a guide to the finishes, however, houses are sold as seen and we recommend customers satisfy themselves as to the specification and finishes installed to each home.

Fourth Floor

BIRCHFIELD COLLECTION



Key
ST Store



4th

LG&H RENTED HOMES

1 Bedroom

PLOT 07 B 04-01	Length Width	
Kitchen	2.50m x 2.70m	8'2" x 8'10"
Living/Dining Room	3.87m x 4.81m	12'8" x 15'9"
Bedroom	2.89m x 5.26m	9'5" x 17'3"
Total Area	52.1 sq m	560 sq ft

PLOT 07 B 04-05	Length Width	
Kitchen/Living/Dining Room	6.87m x 3.87m	22'6" x 12'8"
Bedroom	4.60m x 3.62m	15'1" x 11'10"
Total Area	51.5 sq m	554 sq ft

PLOT 07 B 04-02	Length Width	
Kitchen	2.50m x 2.70m	8'2" x 8'10"
Living/Dining Room	3.90m x 4.22m	12'9" x 13'10"
Bedroom	2.90m x 5.26m	9'5" x 17'3"
Total Area	50.0 sq m	538 sq ft

PLOT 07 B 04-07	Length Width	
Kitchen	2.50m x 2.70m	8'2" x 8'10"
Living/Dining Room	3.90m x 4.22m	12'9" x 13'10"
Bedroom	2.90m x 5.26m	9'5" x 17'3"
Total Area	50 sq m	538 sq ft

2 Bedrooms

PLOT 07 B 04-03	Length Width	
Kitchen	4.80m x 2.90m	15'8" x 9'6"
Living/Dining Room	4.20m x 4.85m	13'9" x 15'10"
Bedroom 1	3.13m x 4.67m	10'3" x 15'3"
Bedroom 2	3.27m x 4.16m	10'8" x 13'7"
Total Area	83.1 sq m	894 sq ft

PLOT 07 B 04-06	Length Width	
Kitchen	4.80m x 2.90m	15'8" x 9'6"
Living/Dining Room	4.20m x 4.85m	13'9" x 15'10"
Bedroom 1	3.13m x 4.67m	10'3" x 15'3"
Bedroom 2	3.27m x 4.16m	10'8" x 13'7"
Total Area	83.0 sq m	893 sq ft

PLOT 07 B 04-04	Length Width	
Kitchen	3.24m x 2.20m	10'7" x 7'2"
Living/Dining Room	3.95m x 5.83m	12'11" x 19'1"
Bedroom 1	3.50m x 3.11m	11'5" x 10'2"
Bedroom 2	2.88m x 3.95m	9'5" x 12'11"
Total Area	72.6 sq m	781 sq ft

SITE PLAN

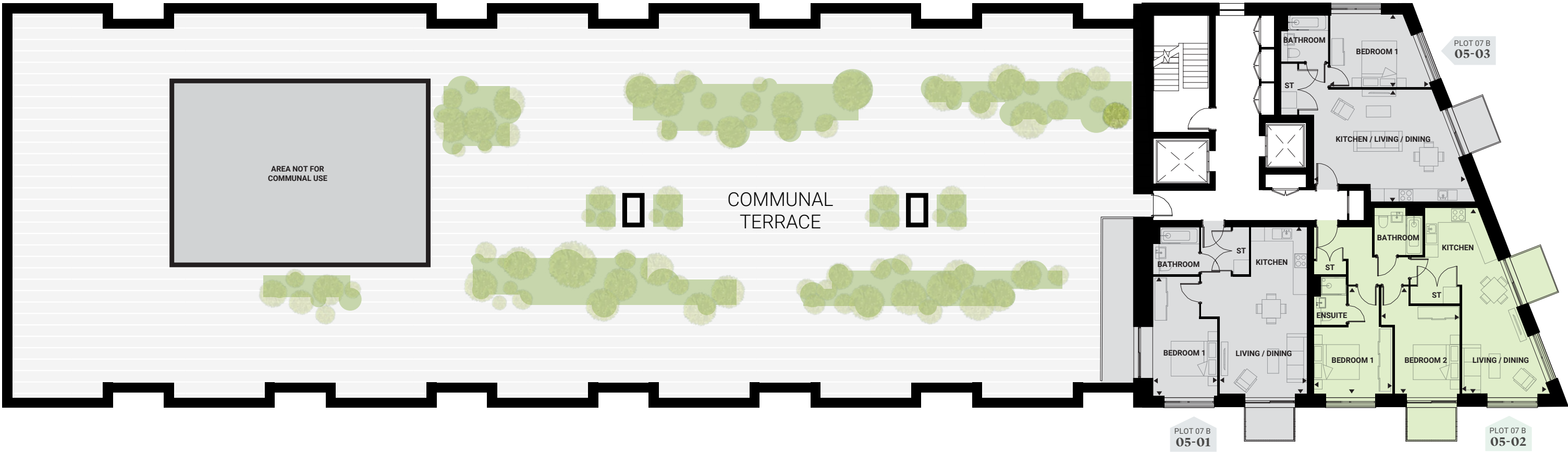
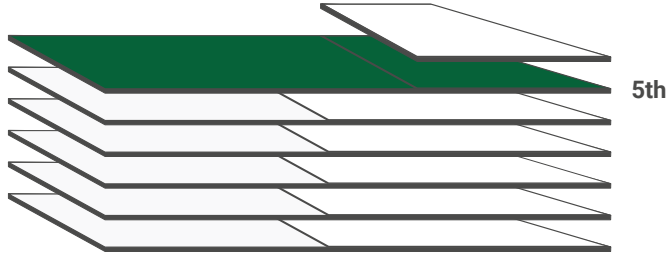
◀ PREVIOUS FLOOR

NEXT FLOOR ▶

🔑 PRICES & AVAILABILITY

The specification has been compiled with best intentions to provide a guide to the finishes, however, houses are sold as seen and we recommend customers satisfy themselves as to the specification and finishes installed to each home.

Fifth Floor
BIRCHFIELD COLLECTION



1 Bedroom

PLOT 07 B 05-01			PLOT 07 B 05-03		
		Length Width			Length Width
Kitchen	2.50m x 2.70m	8'2" x 8'10"	Kitchen/Living/ Dining Room	6.87m x 3.87m	22'6" x 12'8"
Living/Dining Room	3.90m x 4.81m	12'9" x 15'9"	Bedroom	4.60m x 3.62m	15'1" x 11'10"
Bedroom	2.90m x 5.25m	9'6" x 17'2"	Total Area	51.5 sq m	554 sq ft
Total Area	52.1 sq m	560 sq ft			

2 Bedrooms

PLOT 07 B 05-02		
		Length Width
Kitchen	3.24m x 2.20m	10'7" x 7'2"
Living/Dining Room	3.95m x 5.83m	12'11" x 19'1"
Bedroom 1	3.50m x 3.11m	11'5" x 10'2"
Bedroom 2	2.88m x 3.95m	9'5" x 12'11"
Total Area	72.5 sq m	780 sq ft

SITE PLAN

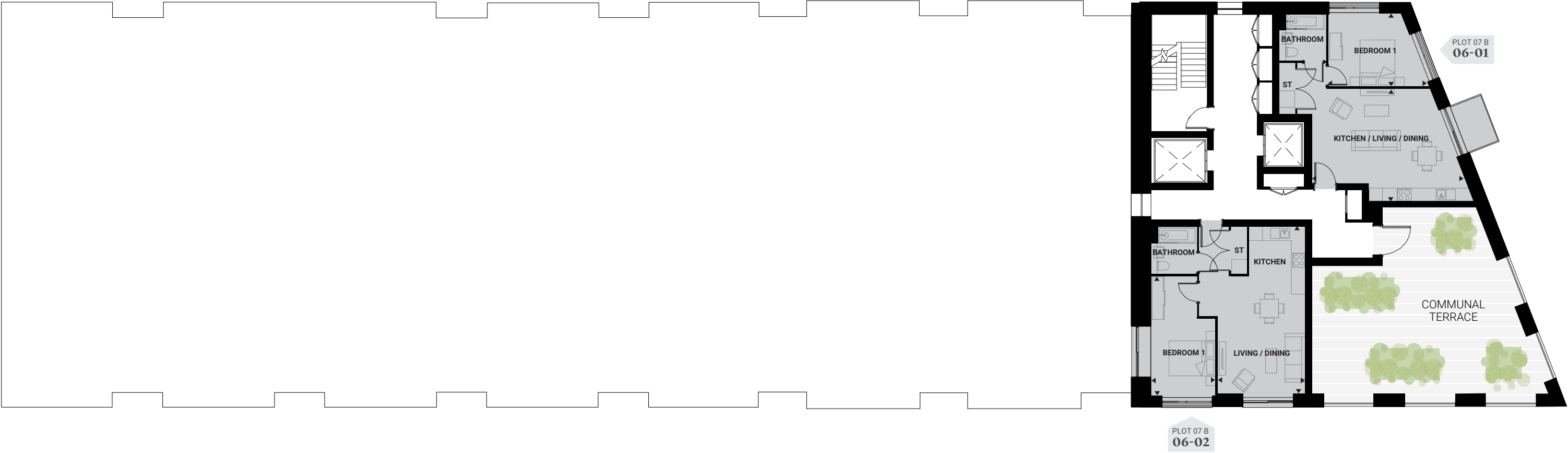
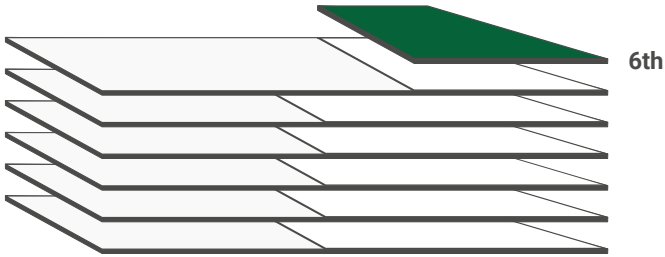
◀ PREVIOUS FLOOR

NEXT FLOOR ▶

🔑 PRICES & AVAILABILITY

The specification has been compiled with best intentions to provide a guide to the finishes, however, houses are sold as seen and we recommend customers satisfy themselves as to the specification and finishes installed to each home.

Sixth Floor
BIRCHFIELD COLLECTION



1 Bedroom

PLOT 07 B 06-01			PLOT 07 B 06-02		
Length Width			Length Width		
Kitchen/Living/ Dining Room	6.87m x 3.87m	22'6" x 12'8"	Kitchen	2.50m x 2.70m	8'2" x 8'10"
Bedroom	4.60m x 3.62m	15'1" x 11'10"	Living/Dining Room	3.90m x 4.81m	12'9" x 15'9"
Total Area	51.5 sq m	554 sq ft	Bedroom	2.90m x 5.25m	9'6" x 17'2"
			Total Area	52.1 sq m	560 sq ft

IT'S ALL IN *the detail...*

Kitchen

- Contemporary grey gloss handle less kitchen
- Laminate worktop with matching upstand
- Stainless steel splashback to hob
- Stainless steel 1½ bowl sink with chrome mixer tap
- Bosch electric single oven, ceramic hob and integrated cooker hood
- Kenwood integrated fridge/freezer
- Hoover integrated dishwasher
- Zanussi washer/dryer located in Utility cupboard

Bathroom & Ensuite

- Contemporary white sanitaryware including bath, bath panel, semi recessed basin and wall hung toilet
- Chrome mixer tap with push down waste
- Integrated storage cupboard below sink
- Thermostatic bath/shower mixer over bath with dual shower head
- Glass shower screen to bath
- Thermostatic shower mixer to shower cubicle with adjustable shower head
- Chrome framed glass shower screen to ensuite
- Large format wall tiling
- Chrome heated towel rail
- Illuminated mirror
- Toilet roll holder

Flooring

- Wood effect Karndean flooring to hall, kitchen, dining/living room
- Large format tiling to bathroom and ensuite
- Grey carpet to bedrooms

General

- Anthracite aluminium double glazed windows
- Walls and ceilings painted in white
- Architraves and skirtings painted in white
- White painted flush internal doors with chrome ironmongery
- Blinds to all windows
- Communal gas boiler providing hot water and central heating via white contemporary radiators
- Sprinkler system
- NHBC 10 year build warranty

Electrical

- Downlights to hall, kitchen, dining/living room, bathroom and ensuite
- Pendant lighting to bedrooms
- White sockets and switches throughout
- Telephone point to living room and bedroom 1
- TV point to living room and bedroom 1
- Smoke and heat detectors
- MVHR (Mechanical Ventilation Heat Recovery System) to apartment

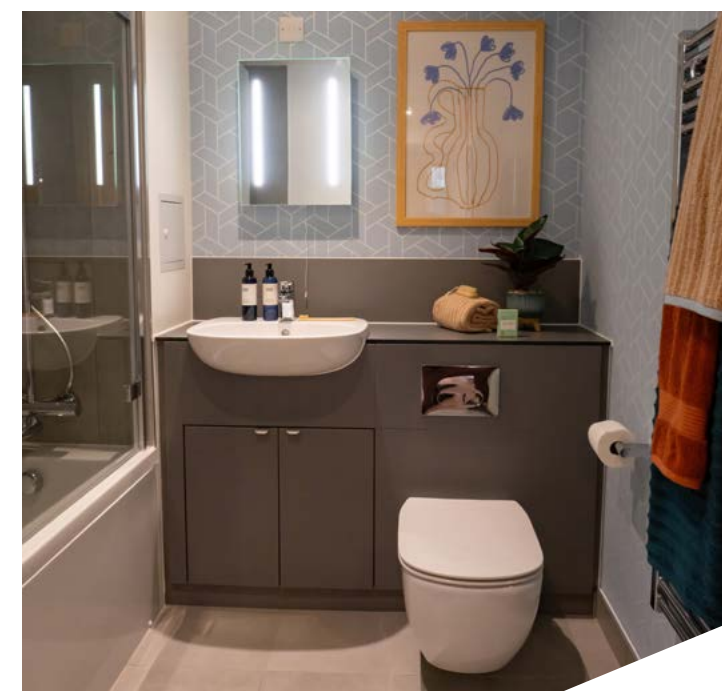
Communal

- Video entry system
- White apartment front door with spyhole viewer
- Bin store
- Bike store with gated and fobbed access
- Lockable postboxes to lobby
- Communal roof terraces and podium garden*
- Balcony or terrace to selected apartments
- Parking to selected 2 bedroom apartments
- Management provider office on site
- Communal green with children's play area and basketball court

* Speak to Sales Consultant for further details.

The specification has been compiled with the best intentions to provide a guide to the finishes, however homes are sold as seen and we recommend that customers satisfy themselves to the specification and finishes installed to each home.

Images show Shared Ownership show homes at Perry Barr.





About us

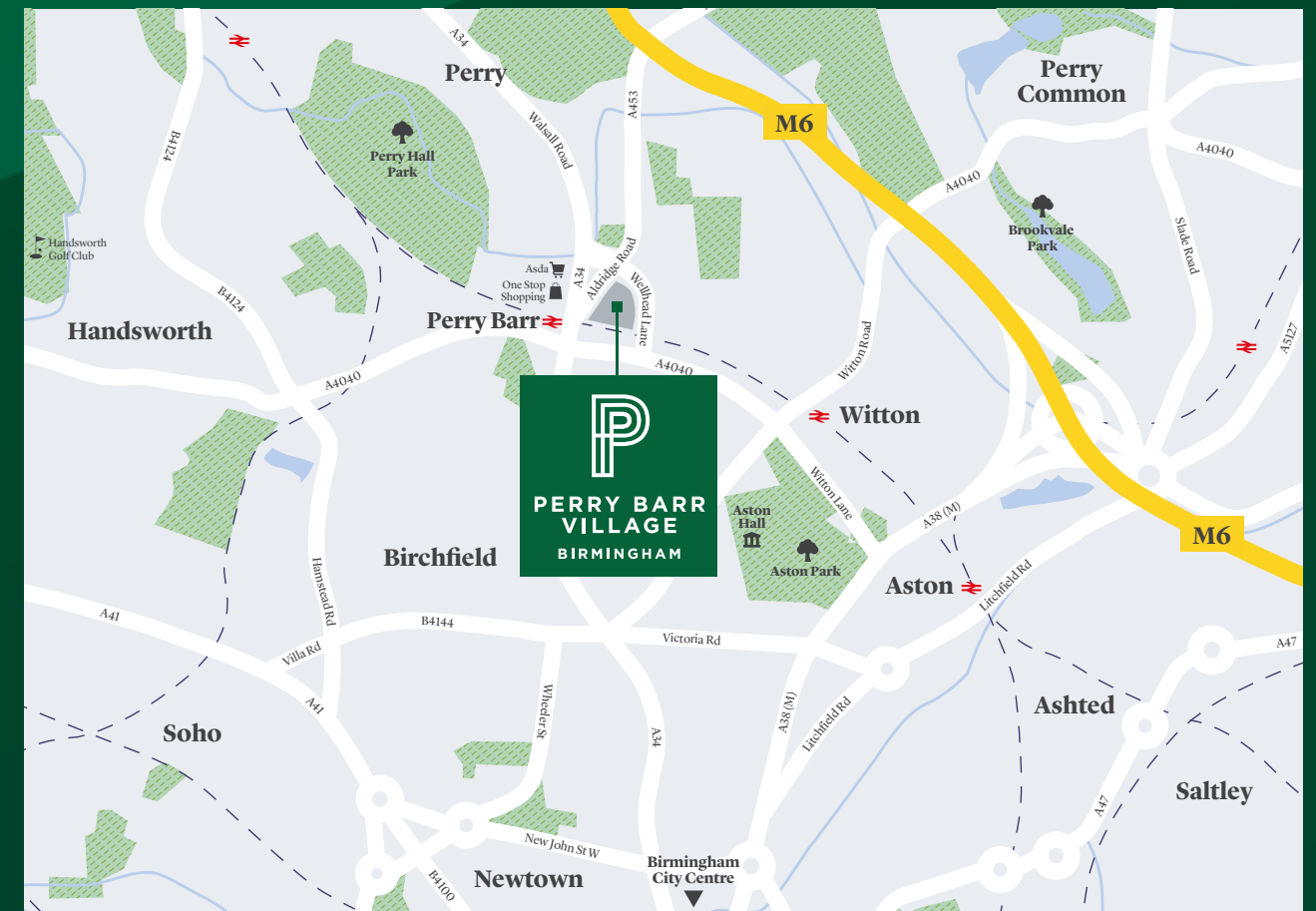
With us, people come first.
That's been the Legal & General
way for almost 200 years.

Legal & General was founded in 1836 by six lawyers in a coffee shop on London's Chancery Lane. Nearly two centuries later, we are investing in new homes for all ages, social groups and home ownership structures.

The shortage of housing in the UK and the high deposits required to buy a property outright mean that home ownership is out of reach for many people. Our mission is to improve everybody's chances to become a homeowner. Whether it's a first-time buyer, young couple or growing family, we believe that everyone deserves a safe and secure space to call their own.

[CLICK HERE TO FIND OUT MORE](#)

How to find us...



ALDRIDGE ROAD, PERRY BARR, BIRMINGHAM B42 2UD



what3words elite.hills.vase

FROM A34 SOUTH

Follow the A34 north and turn right onto Aston Lane A4040, then turn left into Wellhead Lane, the entrance to Perry Barr will be on the left.

FROM A34 NORTH

Follow A34 south and take the A453 Harrier Way sliproad, then turn right into Wellhead Lane, the entrance to Perry Barr will be on the right

[VIEW MAP](#)

Legal & General Affordable Homes terms and conditions apply. All content within this document is indicative only. Legal & General Affordable Homes reserves the right to make any changes at any time. Please speak to a member of our Sales Team for up-to-date information when reserving your new home. Information is correct at the time of going to print. Maps not to scale. Distances and times taken from google.co.uk/maps. January 2025. LGAH-PB(B)-22012025



**PERRY
BARR
VILLAGE**

ALDRIDGE ROAD,
BIRMINGHAM,
B42 2UD

PERRY-BARR-VILLAGE.CO.UK

0121 7565 308



what3words
elite.hills.vase

