



The Goodridge

4 bedroom home

The Quarters @Redhill

Redhill Way, Telford TF2 9PD | **07787 815891**

lindenhomes.co.uk

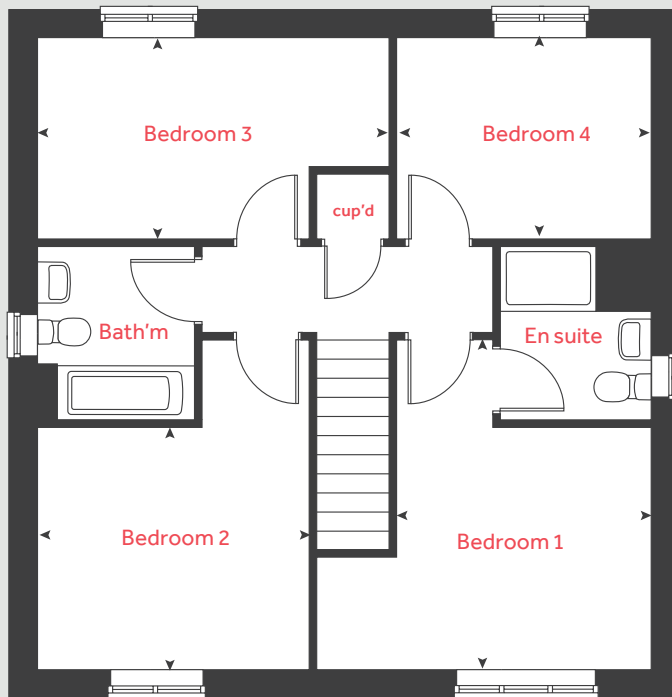
Linden
HOMES

The Goodridge

4 bedroom home

Homes 224 & 225

First floor



Ground floor

Kitchen / dining room

5.72m x 2.82m 18' 7" x 9' 2"

Living room

4.74m x 3.46m 15' 5" x 11' 3"

First floor

Bedroom 1

4.10m x 3.07m 13' 4" x 10' 0"

Bedroom 2

3.46m x 2.98m 11' 3" x 9' 7"

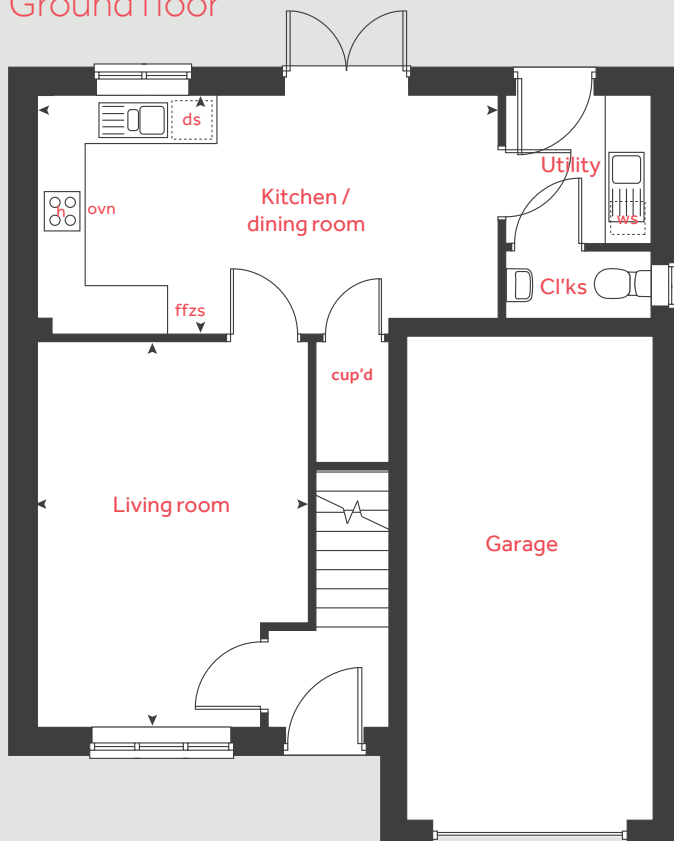
Bedroom 3

4.35m x 2.50m 14' 4" x 8' 2"

Bedroom 4

3.12m x 2.50m 10' 2" x 8' 2"

Ground floor



h	hob	ffzs	fridge freezer space
ovn	oven	cup'd	cupboard
ws	washing machine space	◀ ▶	measuring points
ds	dishwasher space		

Please note, floorplans and dimensions are taken from architectural drawings and are for guidance only. Dimensions stated are within a tolerance of plus or minus 50mm. Overall dimensions are usually stated and there may be projections into these. With our continual improvement policy we constantly review our designs and specification to ensure we deliver the best products to our customers. Computer generated images not to scale. Finishes and materials may vary and landscaping is illustrative only. Kitchen layouts are indicative only and may change. To confirm specific details on our homes please see our sales consultant.

Produced by Vistry Group Design Studio.

When you have finished with this leaflet please recycle it.

NBNRED GDXXXXX / 03.22

Linden
HOMES