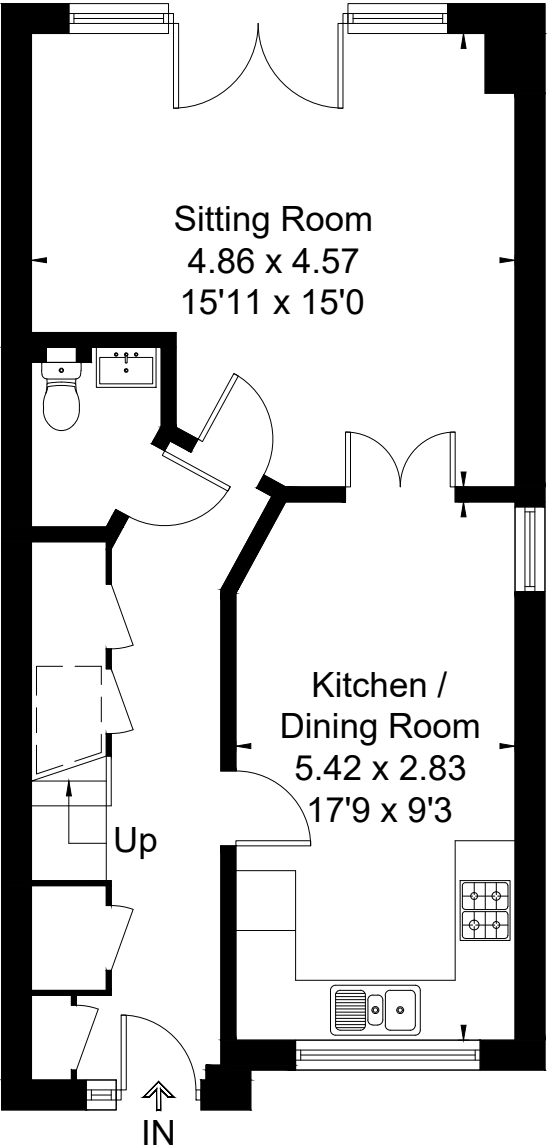
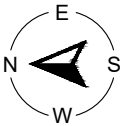
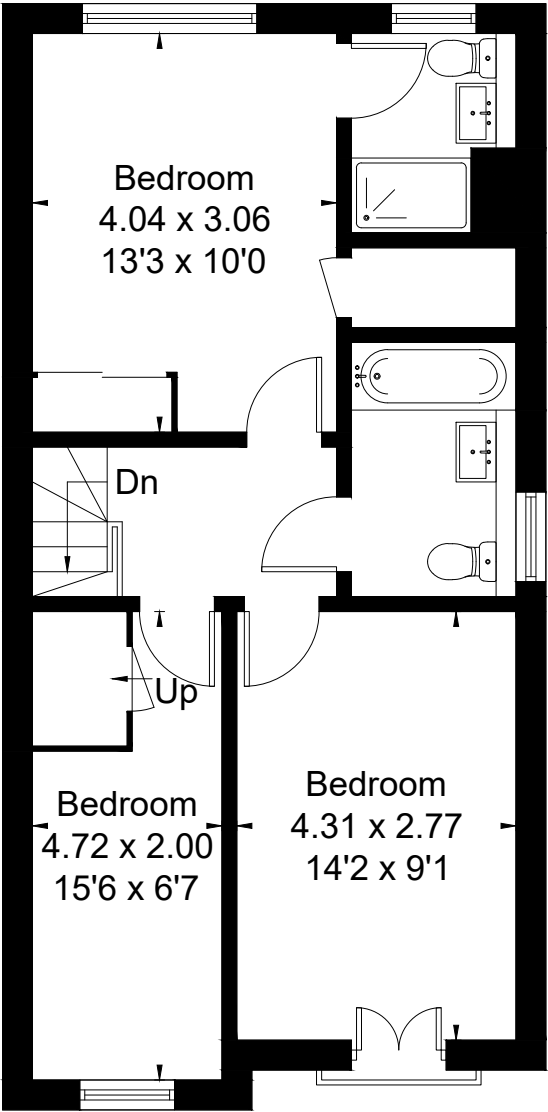


Approximate Floor Area = 99.8 sq m / 1074 sq ft
Bike Store = 0.7 sq m / 7 sq ft
Total = 100.5 sq m / 1081 sq ft

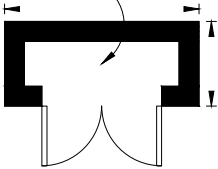


Ground Floor



First Floor

Bike Store
1.94 x 0.85
6'4 x 2'9



(Not Shown In Actual
Location / Orientation)



This floor plan has been drawn in accordance with RICS Property Measurement 2nd edition.
All measurements, including the floor area, are approximate and for illustrative purposes only. @fourwalls-group.com #91099