

Abbeville Park

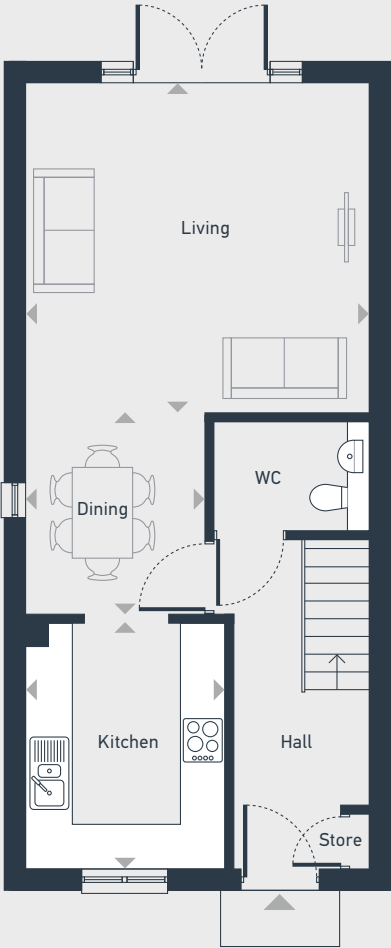
The Dallington 3 bedroom home



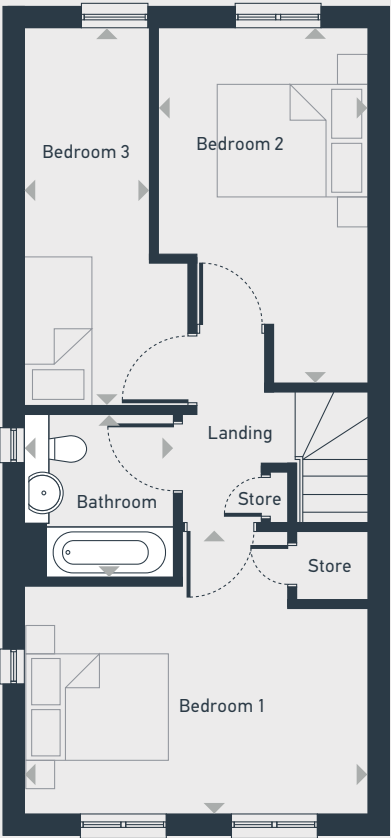
Abbeville Park

The Dallington 3 bedroom home

94 sq m / 1,015 sq ft



GROUND FLOOR



FIRST FLOOR

GROUND FLOOR	m	ft
Living	4.53m x 4.36m	14'10" x 14'4"
Kitchen	3.27m x 2.64m	10'9" x 8'8"
Dining	2.67m x 2.37m	8'9" x 7'9"

FIRST FLOOR	m	ft
Bedroom 1	4.53m x 3.76m	14'10" x 12'4"
Bedroom 2	4.71m x 2.78m	15'5" x 9'2"
Bedroom 3	4.99m x 2.78m	16'4" x 7'1"
Bathroom	2.15m x 1.95m	7'1" x 6'5"



01444 360 065 | placesforpeople.co.uk/abbevillepark
Abbeville Park, Fairbridge Way, Burgess Hill, West Sussex RH15 8BF

Please note: All layouts and floor plans, configurations, maps and information are intended for guidance only and accuracy of this information cannot be relied upon by prospective purchasers who must make their own enquiries to satisfy themselves by inspection or otherwise as to the correct detail. Sizes and dimensions approximate and subject to change.