

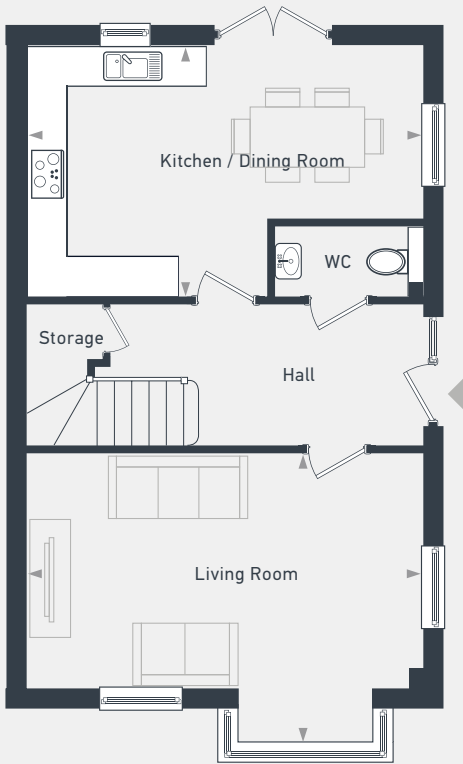
**Netley  
Grange**

**The Gullwing  
3 bedroom house**

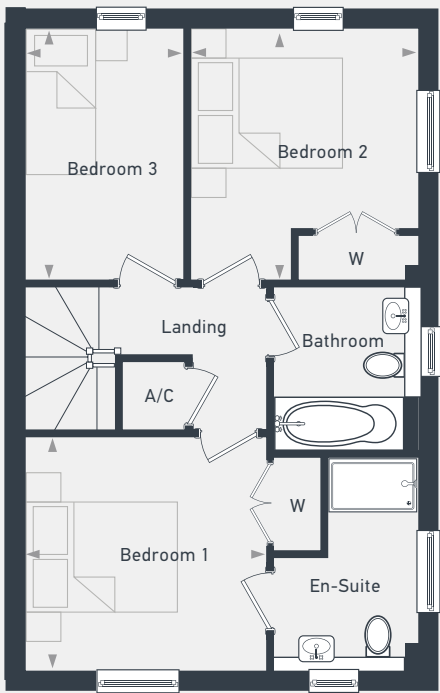


Plots 83, 89 - semi-detached  
Plot 83 - handed

95.8 sq m / 1032 sq ft



GROUND FLOOR



FIRST FLOOR

DIMENSIONS	m	
Kitchen / Dining Room	5.37m x 3.42m	17'6" x 11'2"
Living Room	5.37m x 3.90m	17'6" x 12'7"

DIMENSIONS	m	
Bedroom 1	3.30m x 3.21m	10'8" x 11'2"
Bedroom 2	3.42m x 3.08m	11'2" x 10'1"
Bedroom 3	3.42m x 2.17m	11'2" x 7'1"



02380 987 604 | [placesforpeople.co.uk/netley-grange](https://placesforpeople.co.uk/netley-grange)  
Netley Grange, Grange Road, Netley, Southampton, SO31 5FH

**Please note:** All layouts and floor plans, configurations, maps and information are intended for guidance only and accuracy of this information cannot be relied upon by prospective purchasers who must make their own enquiries to satisfy themselves by inspection or otherwise as to the correct detail. Sizes and dimensions approximate and subject to change.