

Prices  
*from*  
**£82,000**

# Whitehouse Park

Aubrac Close, Whitehouse, Milton Keynes, MK8 1LJ

A brand new development of 1 & 2 bedroom apartments

**////** ParadigmLiving



£ Prices from **£82,000 (40% share)**

% Share available **40%-70%**

🛏 1 & 2 bedrooms



## Whitehouse Park KEY FEATURES

White Bathroom suite and  
thermostatic shower

Carpet throughout bedrooms

Luxury vinyl flooring in  
kitchen/living area & bathroom

Gas central heating

Allocated parking

Fitted kitchen with integrated  
electric oven and gas hob

Freestanding washing machine  
and fridge freezer

*We are pleased to offer these  
1 & 2 bedroom apartments  
available through Shared  
Ownership, located in  
Whitehouse Park, Milton  
Keynes.*



These particulars do not constitute any part of an offer or contract. Any intended purchasers must satisfy themselves as to the correctness of each of the statements contained in these particulars. All floor layouts may be subject to changes. The dimensions given on the plan are subject to minor variations intended for guidance only and are not to be used for carpets, appliances or items of furniture.



## Property Type

Plots 1, 2\*, 4, 5\*, 7,  
8\*, 10, 11\*

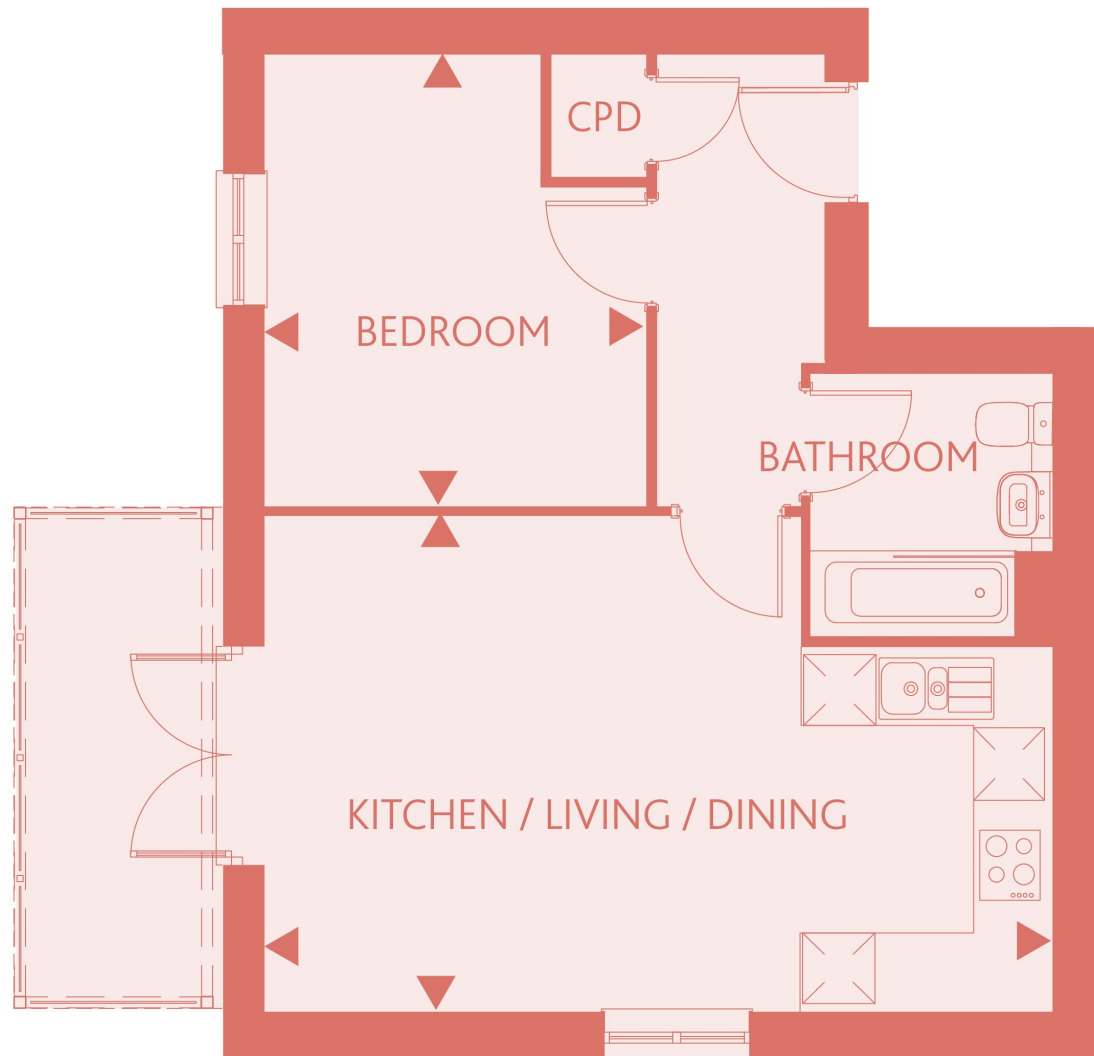
(\* handed)

### KITCHEN/LIVING/DINING

13'5" x 21'7" 4.10m x 6.58m

### BEDROOM 1

12'6" x 10'5" 3.82m x 3.20m



These particulars do not constitute any part of an offer or contract. Any intended purchasers must satisfy themselves as to the correctness of each of the statements contained in these particulars. All floor layouts may be subject to changes. The dimensions given on the plan are subject to minor variations intended for guidance only and are not to be used for carpets, appliances or items of furniture.





## Property Type

Plots 3, 6, 9, 12

(\* handed)

### KITCHEN/LIVING/DINING

13'5" x 22'1" 4.11m x 6.74m

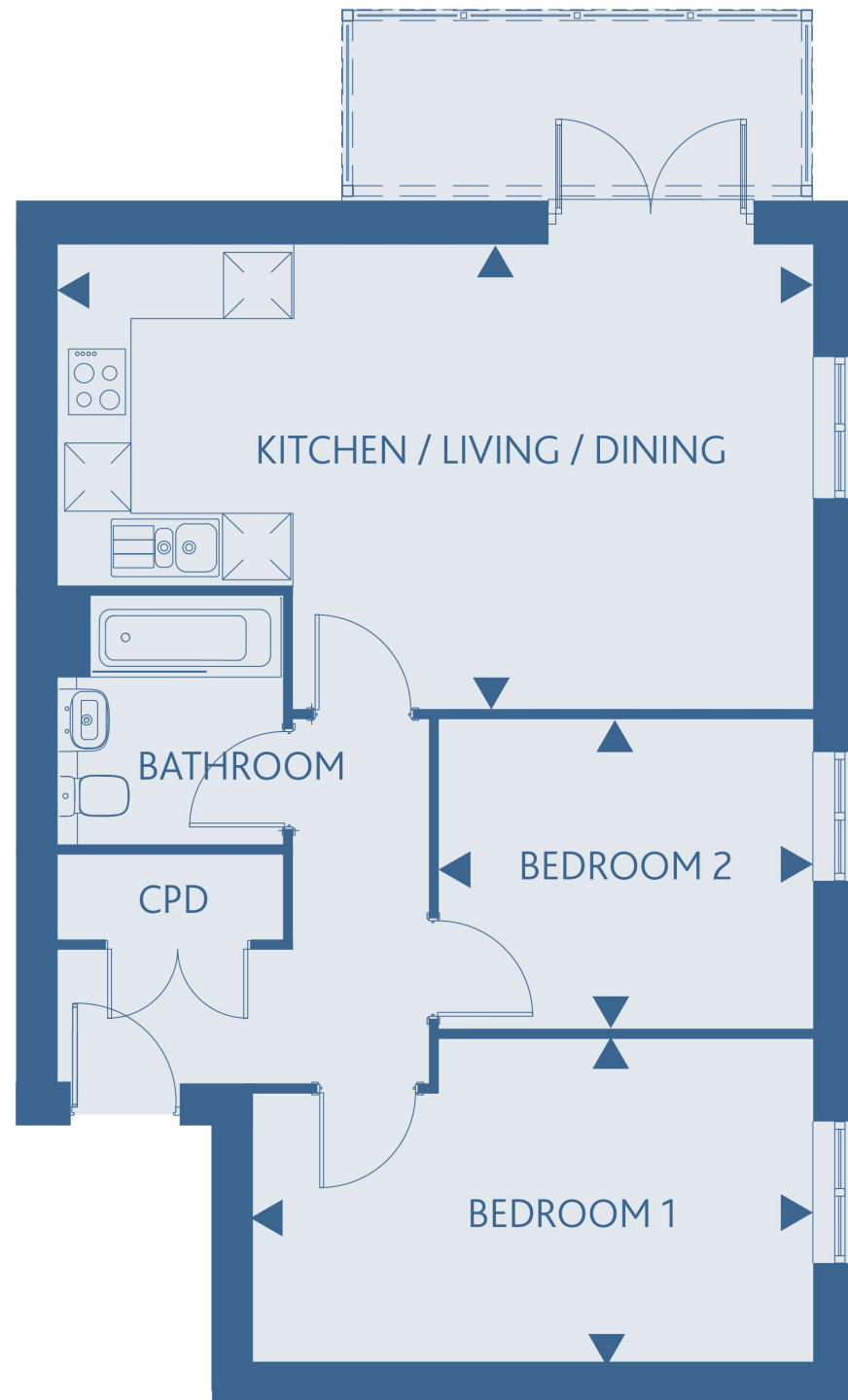
### BEDROOM 1

9'6" x 16'5" 2.92m x 5.02m

### BEDROOM 2

9'1" x 11'0" 2.77m x 3.36m

These particulars do not constitute any part of an offer or contract. Any intended purchasers must satisfy themselves as to the correctness of each of the statements contained in these particulars. All floor layouts may be subject to changes. The dimensions given on the plan are subject to minor variations intended for guidance only and are not to be used for carpets, appliances or items of furniture.



# SITE PLAN



These particulars do not constitute any part of an offer or contract. Any intended purchasers must satisfy themselves as to the correctness of each of the statements contained in these particulars. All floor layouts may be subject to changes. The dimensions given on the plan are subject to minor variations intended for guidance only and are not to be used for carpets, appliances or items of furniture.



**For more information**

0300 303 8046

**[www.paradigmliving.co.uk](http://www.paradigmliving.co.uk)**

These particulars do not constitute any part of an offer or contract. Any intended purchasers must satisfy themselves as to the correctness of each of the statements contained in these particulars. All floor layouts maybe subject to changes. The dimensions given on the plan are subject to minor variations intended for guidance only and are not be used for carpets, appliances or items of furniture.

