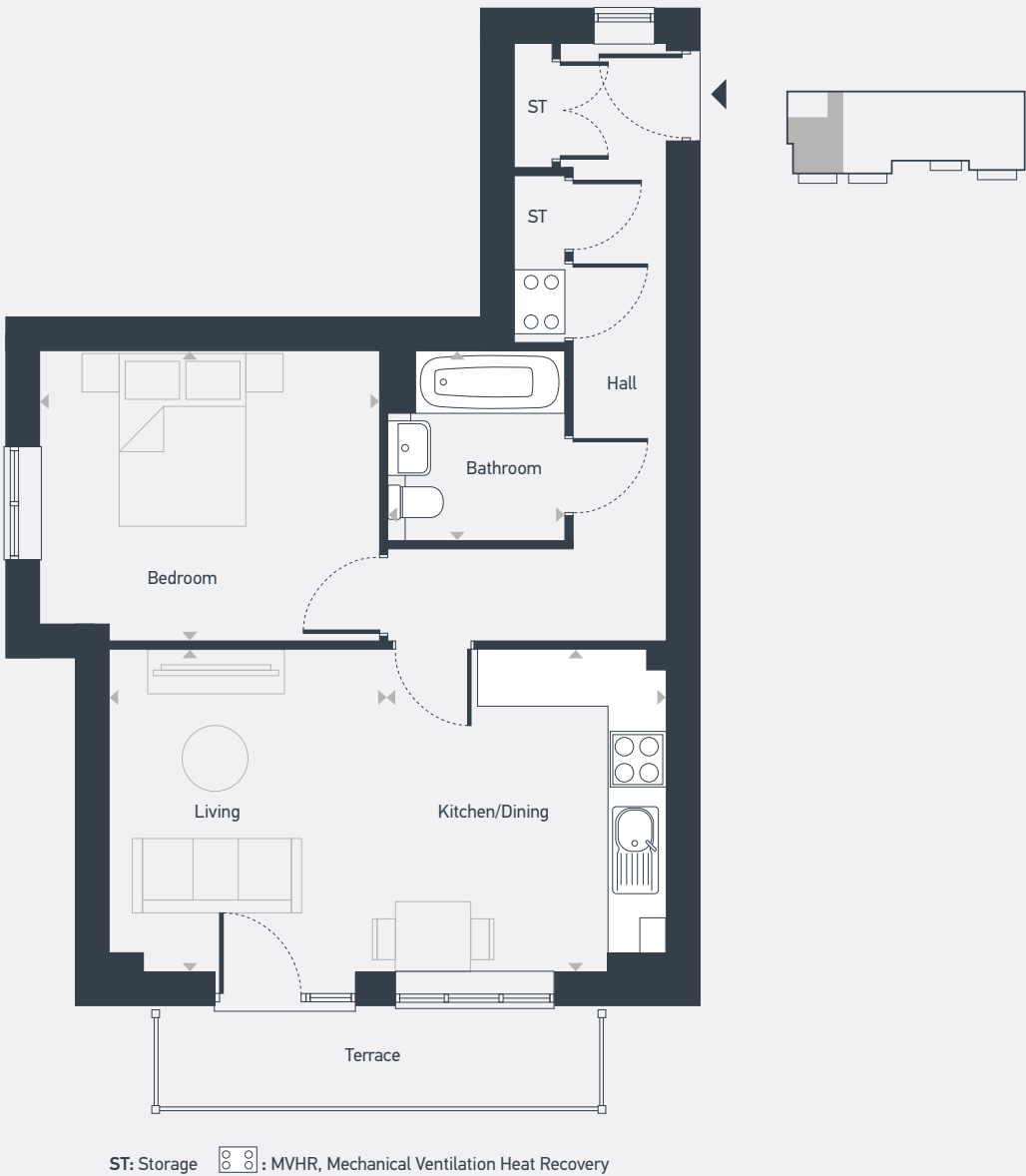


# Greenwood Gardens Lower Herne Village

## Arable House – Type FT10 1 bedroom apartment

As drawn: Plot 55 – Ground Floor

52.55 sq.m / 566 sq.ft



DIMENSIONS	m	ft
Kitchen/Dining	3.66m x 2.16m	12'0" x 7'1"
Living	4.11m x 3.66m	12'0" x 13'6"
Bedroom	3.84m x 3.28m	12'8" x 10'9"
Bathroom	2.19m x 2.04m	7'1" x 6'6"



01227 387085 | [greenwoodgardens@placesforpeople.co.uk](mailto:greenwoodgardens@placesforpeople.co.uk) | [placesforpeople.co.uk/greenwoodgardens](https://placesforpeople.co.uk/greenwoodgardens)  
Furrows Drive, Lower Herne CT6 7FH

Please note: All layouts and floor plans, configurations, maps and information are intended for guidance only and accuracy of this information cannot be relied upon by prospective purchasers who must make their own enquiries to satisfy themselves by inspection or otherwise as to the correct detail.