

The Willows

AT STORTFORD FIELDS

1 BEDROOM APARTMENT

Shared Ownership from £122,625
for a 45% share

Property overview A brand new 1 bedroom apartment in Bishop's Stortford, a thriving market town with great shopping, arts, schools, and medical facilities. Surrounded by countryside, it offers easy access to Cambridge, Newmarket, Ely, and London. Excellent transport links include rail, motorway, and an airport. Enjoy Hatfield Forest, historic sites, and cycling along the River Stort towpath for relaxation and adventure.



Specification

- Symphony kitchen, with silestone quartz worktop and upstands
- Integrated extractor, hob and oven, fridge freezer, washing machine and dishwasher
- Glass shower screen & thermostatic mixer tap
- Chrome heated towel rail
- Mirror to bathroom above basin with shaver socket
- Vinyl flooring to kitchen, bathroom and WC
- Contemporary Oak Grey Vinyl flooring to living room & hall
- Fitted carpet to bedrooms, landing and staircase
- LED downlights to living areas, dining area and bathroom
- Low energy LED pendant lighting to hallway, landing and bedrooms
- Combination boiler
- Private balcony / terrace to all apartments
- 990-year lease
- Predicted energy rating: B

Features include:



1 bedroom
apartment



Allocated
parking



Located in
Bishops Stortford



Superb
specification

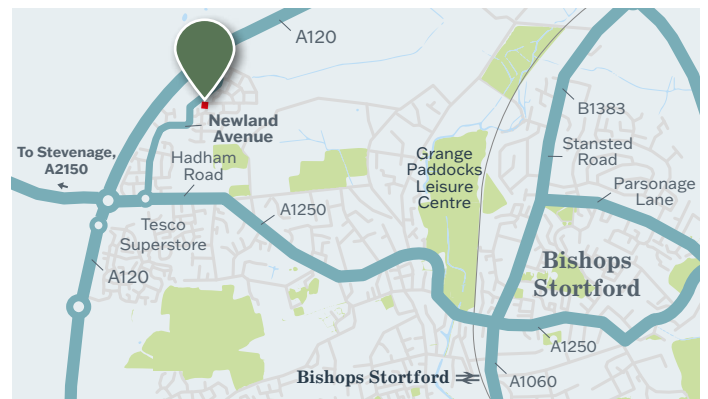


1.3 miles from
Bishops Stortford
station



Integrated
appliances

Location: Newland Avenue, Bishop's Stortford



Register your interest today

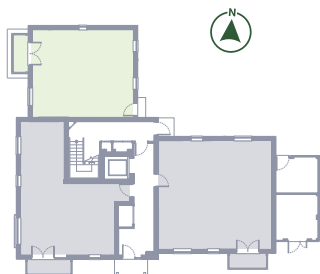
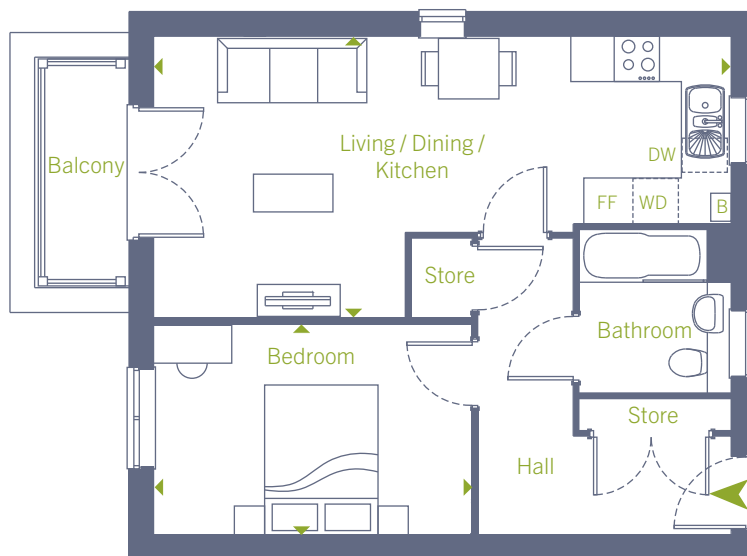
Call: 0207 539 3745 Email: b3@redloft.co.uk

Visit: b3athome.co.uk/find-a-home/the-willows/ Sat Nav: CM23 2BD

Disclaimer: We have made every effort to accurately describe the property. However, prospective buyers should treat these details as a general guide, not as definitive representations or facts. All room dimensions are subject to a 5% tolerance and may vary from plot to plot. Furniture layouts are for illustrative purposes and are indicative only.

B3
at home

Plot 362 - 1 bedroom apartment



Ground floor

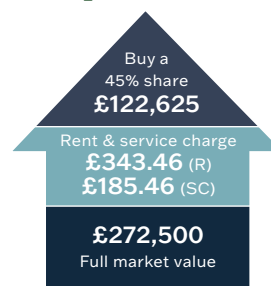
← NEWLAND AVENUE

Dimensions

Kitchen/Living/Dining	7.69m x 3.70m	25' 3" x 12' 1"
Bedroom	4.25m x 2.83m	13' 11" x 9' 4"
Total Gross Internal Area	52.1 m² / 560 ft²	
Balcony	2.84 m ² / 30.6 ft ²	

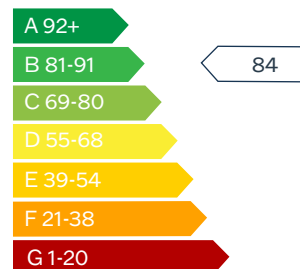
FF – Fridge/Freezer | DW – Dishwasher | WD – Washer/Dryer |
W – Wardrobe | B – Boiler

Shared Ownership Example



Rent & service charges are monthly.
Rent charged at 2.75% on unsold share.

Predicted Energy Assessment



Register your interest today

Call: 0207 539 3745 Email: b3@redloft.co.uk

Visit: b3athome.co.uk/find-a-home/the-willows/ Sat Nav: CM23 2BD

Disclaimer: We have made every effort to accurately describe the property. However, prospective buyers should treat these details as a general guide, not as definitive representations or facts. All room dimensions are subject to a 5% tolerance and may vary from plot to plot. Furniture layouts are for illustrative purposes and are indicative only.