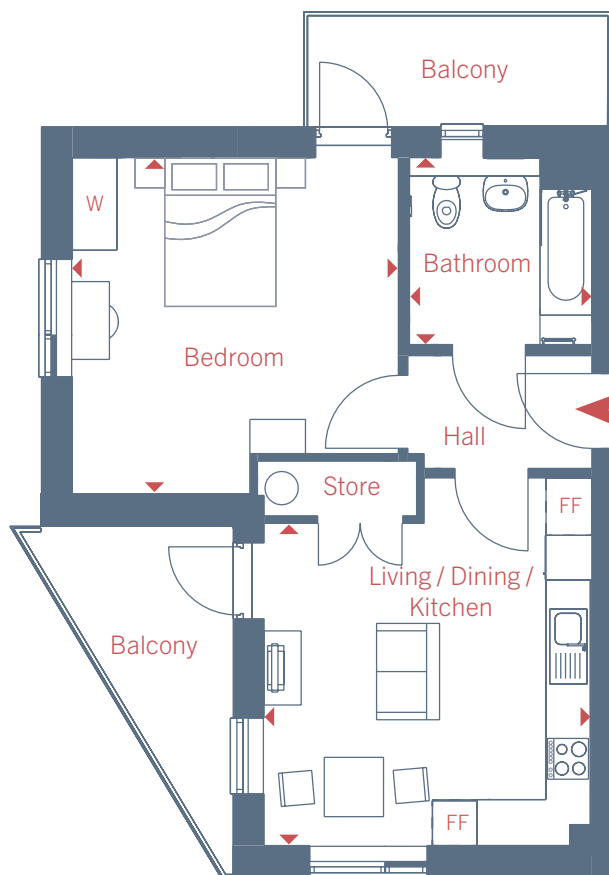
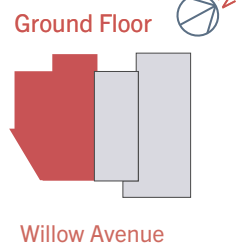


# Willow Avenue

Apartment 1, Beverley Brook House, 13 Willow Av, London SW13 0LT

## Floor Plan

1 bedroom apartment  
Plot 1



Living / Dining / Kitchen	4.42m x 4.35m	14' 6" x 14' 3"
Bedroom	4.56m x 4.34m	14' 11" x 14' 5"
Bathroom	2.52m x 2.46m	8' 3" x 8' 1"

**Total Gross Internal Area** 53 m<sup>2</sup> / 570 ft<sup>2</sup>

Register your interest today

Call: 020 7539 3745 Email: [rhp@redloft.co.uk](mailto:rhp@redloft.co.uk)

Visit: [www.redloftproperty.co.uk/willow-avenue](http://www.redloftproperty.co.uk/willow-avenue)

Floor plans represent typical layouts of the design of the apartments and are not shown to scale. Plot specification, internal and external finishes, dimensions and differences to plots should be checked with the Sales Team before reservation. RHP terms and conditions apply. All content within this document is indicative only. RHP reserves the right to make any changes at any time. Please speak to a member of our Sales Team for up-to-date information when reserving your new home. Information is correct at the time of publication.

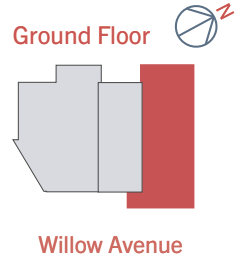
**redloft**

# Willow Avenue

Apartment 2, Beverley Brook House, 13 Willow Av, London SW13 0LT

## Floor Plan

1 bedroom apartment  
Plot 2



Living / Dining / Kitchen	4.77m x 4.42m	15' 8" x 14' 6"
Bedroom	4.52m x 2.45m	14' 10" x 8' 0"
Bathroom	2.87m x 1.84m	9' 5" x 6' 0"

**Total Gross Internal Area 41 m<sup>2</sup> / 441 ft<sup>2</sup>**

Register your interest today

Call: 020 7539 3745 Email: [rhp@redloft.co.uk](mailto:rhp@redloft.co.uk)

Visit: [www.redloftproperty.co.uk/willow-avenue](http://www.redloftproperty.co.uk/willow-avenue)

Floor plans represent typical layouts of the design of the apartments and are not shown to scale. Plot specification, internal and external finishes, dimensions and differences to plots should be checked with the Sales Team before reservation. RHP terms and conditions apply. All content within this document is indicative only. RHP reserves the right to make any changes at any time. Please speak to a member of our Sales Team for up-to-date information when reserving your new home. Information is correct at the time of publication.

**redloft**

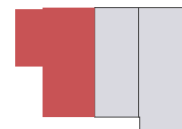
# Willow Avenue

Apartment 3, Beverley Brook House, 13 Willow Av, London SW13 0LT

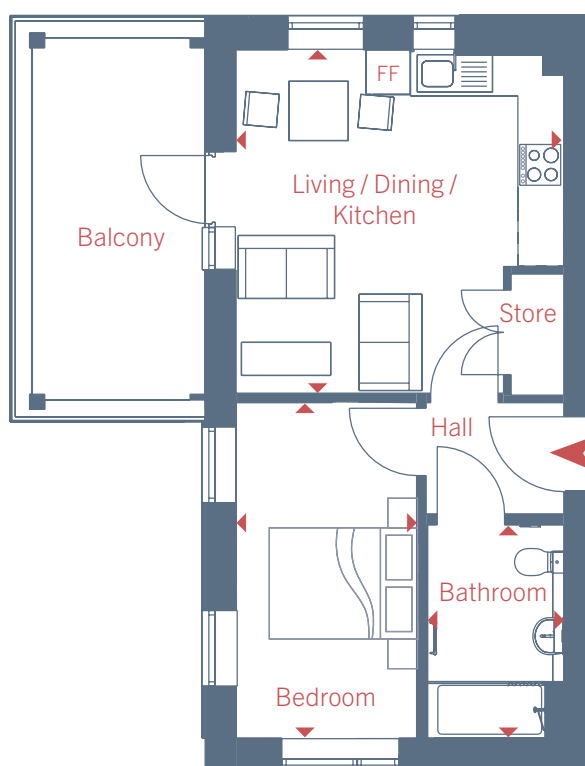
## Floor Plan

1 bedroom apartment  
Plot 3

1st Floor



Willow Avenue



Living / Dining / Kitchen	4.63m x 4.42m	15' 2" x 14' 6"
Bedroom	4.52m x 2.44m	14' 10" x 8' 0"
Bathroom	2.87m x 1.84m	9' 5" x 6' 0"

**Total Gross Internal Area 41 m<sup>2</sup> / 441 ft<sup>2</sup>**

Register your interest today

Call: 020 7539 3745 Email: [rhp@redloft.co.uk](mailto:rhp@redloft.co.uk)

Visit: [www.redloftproperty.co.uk/willow-avenue](http://www.redloftproperty.co.uk/willow-avenue)

Floor plans represent typical layouts of the design of the apartments and are not shown to scale. Plot specification, internal and external finishes, dimensions and differences to plots should be checked with the Sales Team before reservation. RHP terms and conditions apply. All content within this document is indicative only. RHP reserves the right to make any changes at any time. Please speak to a member of our Sales Team for up-to-date information when reserving your new home. Information is correct at the time of publication.

**redloft**

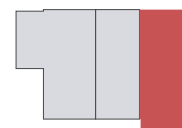
# Willow Avenue

Apartment 4, Beverley Brook House, 13 Willow Av, London SW13 0LT

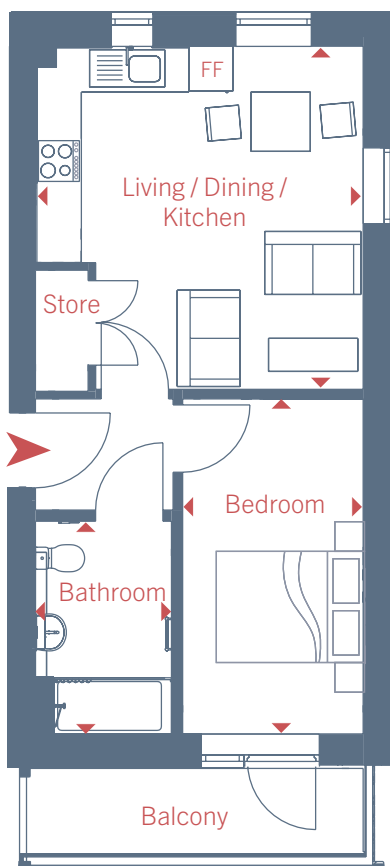
## Floor Plan

1 bedroom apartment  
Plot 4

1st Floor



Willow Avenue



Living / Dining / Kitchen	4.63m x 4.42m	15' 2" x 14' 6"
Bedroom	4.52m x 2.64m	14' 10" x 8' 0"
Bathroom	2.87m x 1.84m	9' 5" x 6' 0"

**Total Gross Internal Area** 41 m<sup>2</sup> / 441 ft<sup>2</sup>

Register your interest today

Call: 020 7539 3745 Email: [rhp@redloft.co.uk](mailto:rhp@redloft.co.uk)

Visit: [www.redloftproperty.co.uk/willow-avenue](http://www.redloftproperty.co.uk/willow-avenue)

Floor plans represent typical layouts of the design of the apartments and are not shown to scale. Plot specification, internal and external finishes, dimensions and differences to plots should be checked with the Sales Team before reservation. RHP terms and conditions apply. All content within this document is indicative only. RHP reserves the right to make any changes at any time. Please speak to a member of our Sales Team for up-to-date information when reserving your new home. Information is correct at the time of publication.

redloft