

The Gosford Charnock Grove

3-bedroom home, sleeps 4



3 | 

1 | 

1 | 



Artist's impression

Key features

- One double bedroom
- Downstairs W.C.
- Open plan kitchen and dining room
- Utility room
- Separate living room
- Driveway parking



The Gosford
Available plots

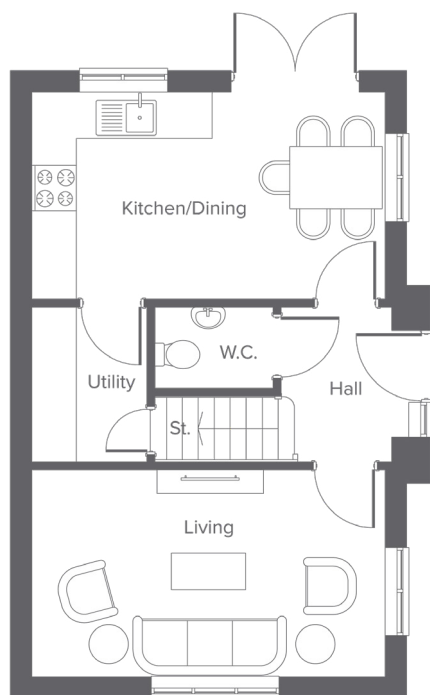
4, 43, 47, 68 or 76

Charter Lane, Charnock Richard, PR7 5LZ

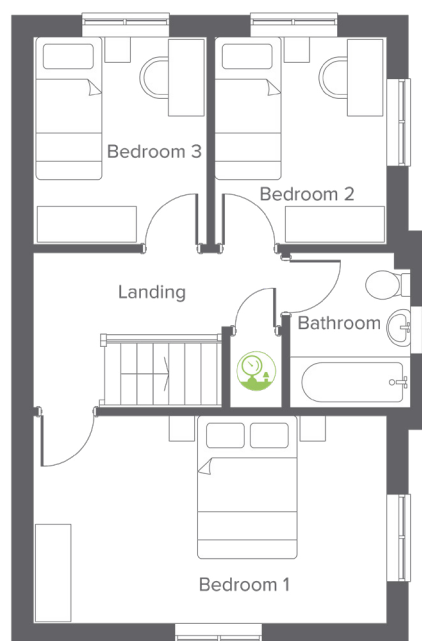
A collection of 76 beautifully designed new homes

The Gosford Charnock Grove

3-bedroom home, sleeps 4



Ground floor



First floor

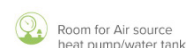
Ground Floor

	Metric	Imperial
Kitchen/Dining	4.95 x 2.92	16'2" x 9'6"
Living	4.95 x 2.92	16'2" x 9'6"
W.C.	1.65 x 1.14	5'4" x 3'8"
Utility	1.61 x 2.18	5'3" x 7'1"

First Floor

	Metric	Imperial
Bedroom 1	4.95 x 2.70	16'2" x 8'10"
Bedroom 2	2.42 x 2.70	7'11" x 8'10"
Bedroom 3	2.48 x 2.70	8'1" x 8'10"
Bathroom	1.70 x 2.18	5'6" x 7'1"

Total size **83.8m² / 912ft²**



Get in touch



01257 650614



yourhousinggroup.co.uk



@yourhousing



yourhousinggroup