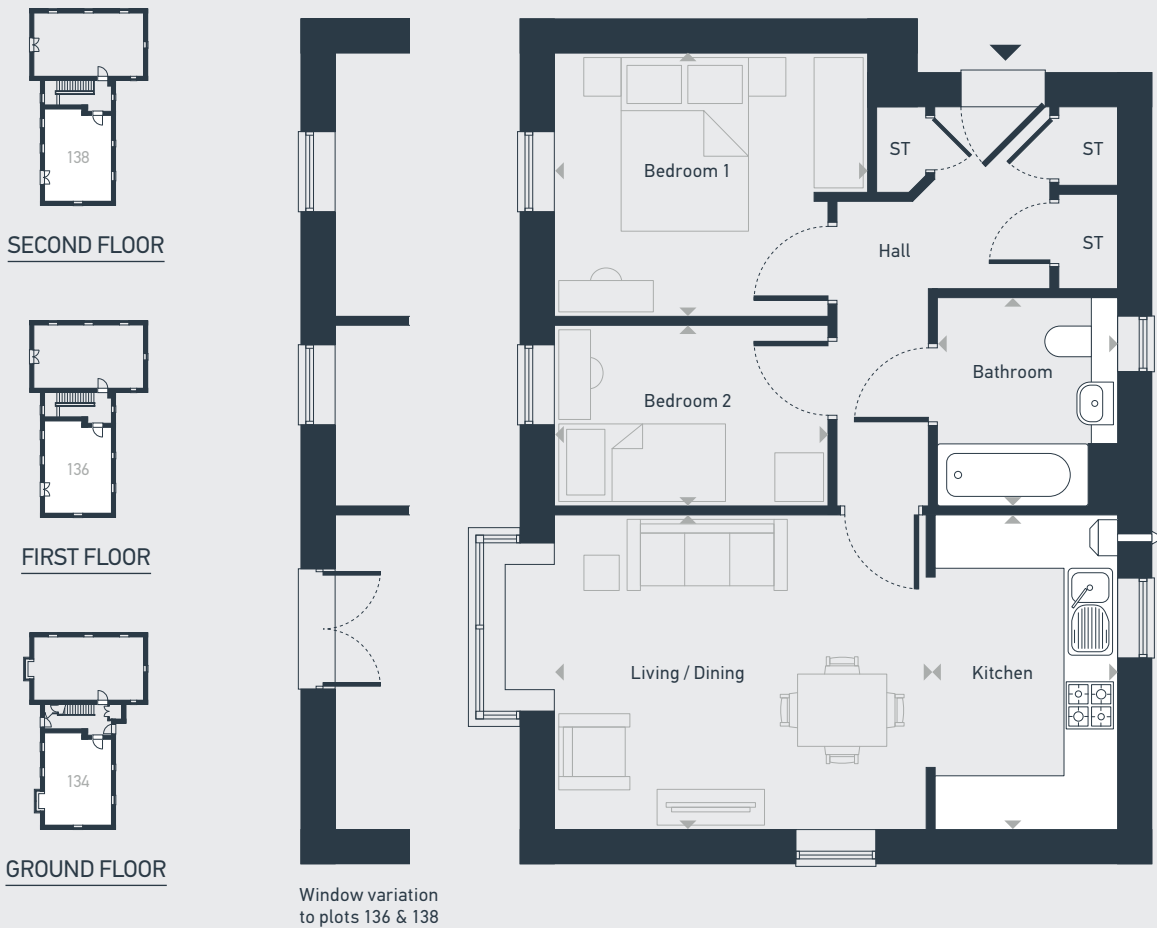


Quarter Jack Park

The Ambersham 2 Bedroom Apartment

Plots as drawn: 134, 136 & 138

54.31 sq m / 584 sq ft



DIMENSIONS	m	ft
Living / Dining Room	4.72m x 3.46m	15'6" x 11'4" (max.)
Kitchen	3.46m x 2.10m	11'4" x 6'11" (max.)
Bedroom 1	3.49m x 2.99m	11'5" x 9'10"
Bedroom 2	2.99m x 2.05m	9'10" x 6'9" (max.)
Bathroom	2.34m x 1.99m	7'8" x 6'6"



01202 805 001 | placesforpeople.co.uk/quarterjackpark
Leigh Road, Wimborne, Dorset BH21 2GA

Please note: All layouts and floor plans, configurations, maps and information are intended for guidance only and accuracy of this information cannot be relied upon by prospective purchasers who must make their own enquiries to satisfy themselves by inspection or otherwise as to the correct detail.