

# Darwin Manor

## The Shermont 2 Bedroom home

---



# Darwin Manor

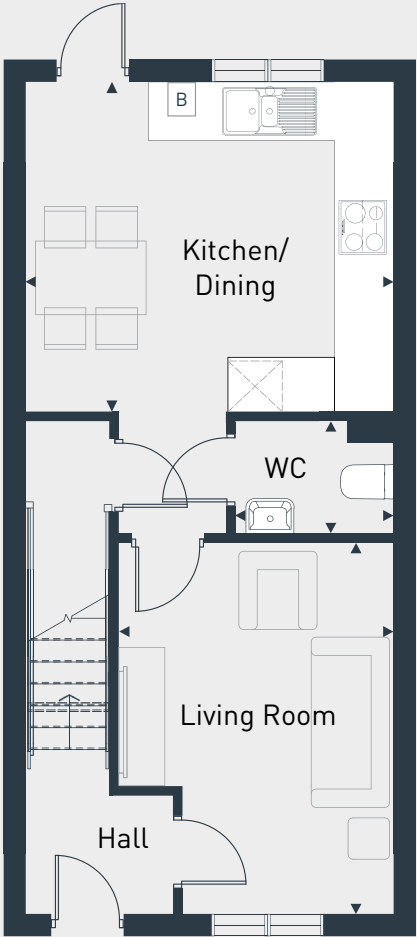


## The Shermont 2 Bedroom home

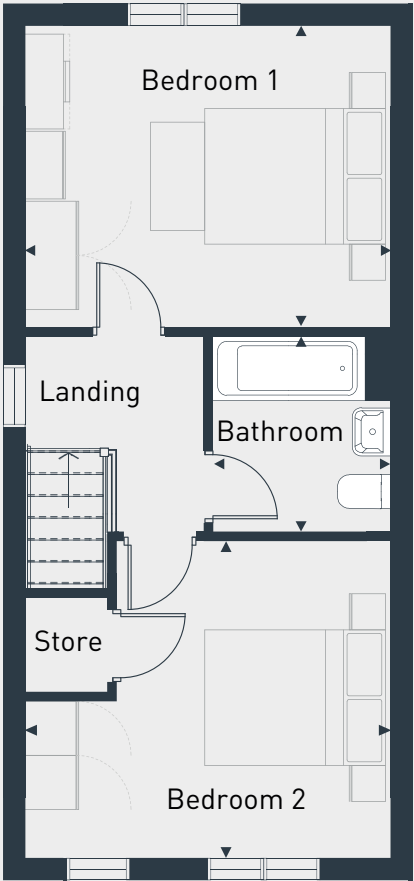
Plots as drawn: 47, 48, 49, 53, 71, 77, 79, 80, 82, 96, 127, 128, 150, 152, 153, 164, 166, 167, 181, 187, 189, 197, 199 & 201

72 sq m / 775 sq ft

Plots handed: 46, 54, 70, 78, 81, 86, 129, 151, 154, 163, 165, 180, 186, 198, 200, 205, 206, 208 & 209



GROUND FLOOR



FIRST FLOOR

\* Plots 129 & 154 include a window to the hall and a window to the kitchen dining room  
\* Selected plots will include a bathroom window - please see sales agent for specific plans

DIMENSIONS	m	ft
Kitchen/Dining	3.96m x 3.58m	13' 0" x 11' 9"
Living	4.07m max x 2.98m max	13' 4" max x 9' 9" max
WC	1.70m x 1.23m	5' 7" x 4' 0"

DIMENSIONS	m	ft
Bedroom 1	3.96m x 3.27m	13' 0" x 10' 9"
Bedroom 2	3.96m max x 3.45m max	13' 0" max x 11' 4" max
Bathroom	2.15m x 1.92m	7' 1" x 6' 4"



01332 331 181 | [www.placesforpeople.co.uk/darwin-manor](http://www.placesforpeople.co.uk/darwin-manor)  
62 Bowes Road Derby, DE24 5BZ

Please note: \*Selected plots will include windows to dining room and hallway, ask sales agent for plot details. All layouts and floor plans, configurations, maps and information are intended for guidance only and accuracy of this information cannot be relied upon by prospective purchasers who must make their own enquiries to satisfy themselves by inspection or otherwise as to the correct detail. Sizes and dimensions approximate and subject to change.