

Darwin Manor

The Elvaston 3 bedroom home



Darwin Manor

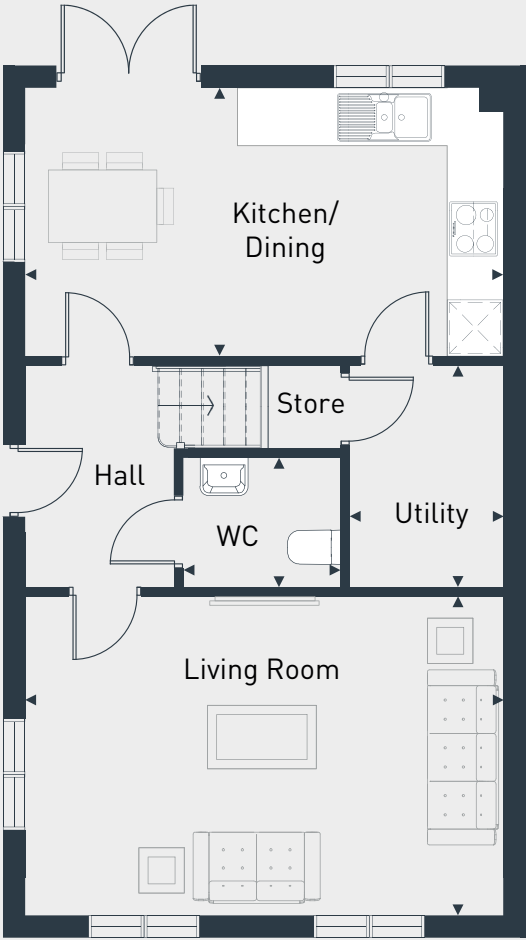


The Elvaston 3 bedroom home

Plots as drawn: 65, 69, 83, 87, 89, 133, 204 & 207

95 sq m / 1017 sq ft

Plots handed: 52, 72, 76, 97, 177, 188 & 196



GROUND FLOOR



FIRST FLOOR

DIMENSIONS	m	ft
Kitchen/Dining	5.20m x 2.94m	17' 1" x 9' 8"
Living	5.20m x 3.49m	17' 1" x 11' 5"
Utility	2.44m x 1.65m	8' 0" x 5' 5"
WC	1.75m x 1.44m	5' 9" x 4' 9"

DIMENSIONS	m	ft
Bedroom 1	3.59m x 2.77m	11'10" x 9' 1"
Bedroom 2	3.12m x 3.06m	10'3" x 10' 0"
Bedroom 3	3.34m x 2.34m	11'0" x 7' 8"
Bathroom	2.05m x 1.70m max	6'9" x 5' 7" max
Ensuite	2.15m x 1.18m max	7' 1" x 3'10" max



01332 331 181 | www.placesforpeople.co.uk/darwin-manor
62 Bowes Road Derby, DE24 5BZ

Please note: All layouts and floor plans, configurations, maps and information are intended for guidance only and accuracy of this information cannot be relied upon by prospective purchasers who must make their own enquiries to satisfy themselves by inspection or otherwise as to the correct detail. Sizes and dimensions approximate and subject to change.