

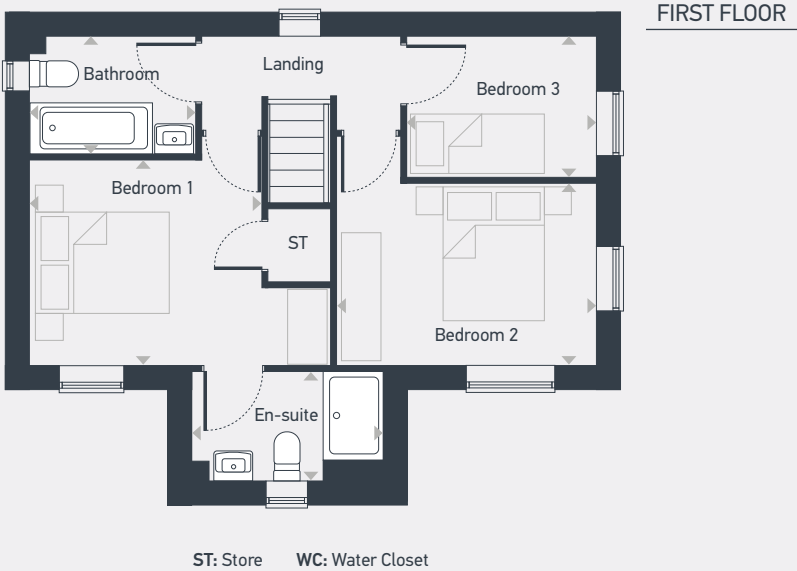
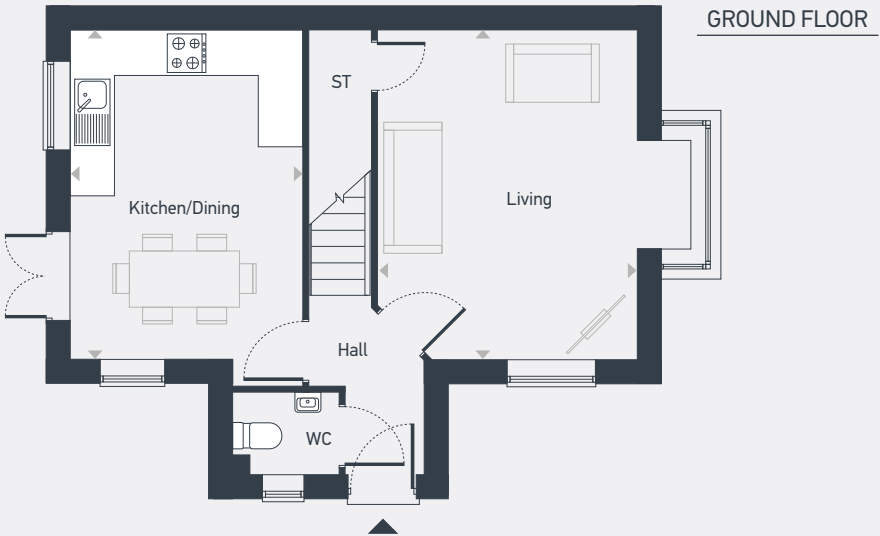
**Sherwin
Gardens**

**The Weaver
3 bedroom home**



Plots as drawn: 21, 42 and 52
Handed: 14

79.81 sq.m / 859 sq.ft



ST: Store WC: Water Closet

DIMENSIONS	m	ft
Kitchen/Dining	4.52m x 3.20m	14'10" x 10'6"
Living	4.52m x 3.54m	14'10" x 11'7"

DIMENSIONS	m	ft
Bedroom 1	3.20m x 2.83m	10'6" x 9'3"
En-suite	2.61m x 1.48m	8'7" x 4'10"
Bedroom 2	3.54m x 2.50m	11'7" x 8'2"
Bedroom 3	2.58m x 1.93m	8'6" x 6'4"
Bathroom	2.29m x 1.60m	7'6" x 5'3"



centralandnorthsales@placesforpeople.co.uk | placesforpeople.co.uk/sherwin-gardens
Sherwin Gardens, Sidings Lane, Bramcote, Nottingham NG9 3GJ

Please note: All layouts and floor plans, configurations, maps and information are intended for guidance only and accuracy of this information cannot be relied upon by prospective purchasers who must make their own enquiries to satisfy themselves by inspection or otherwise as to the correct detail.