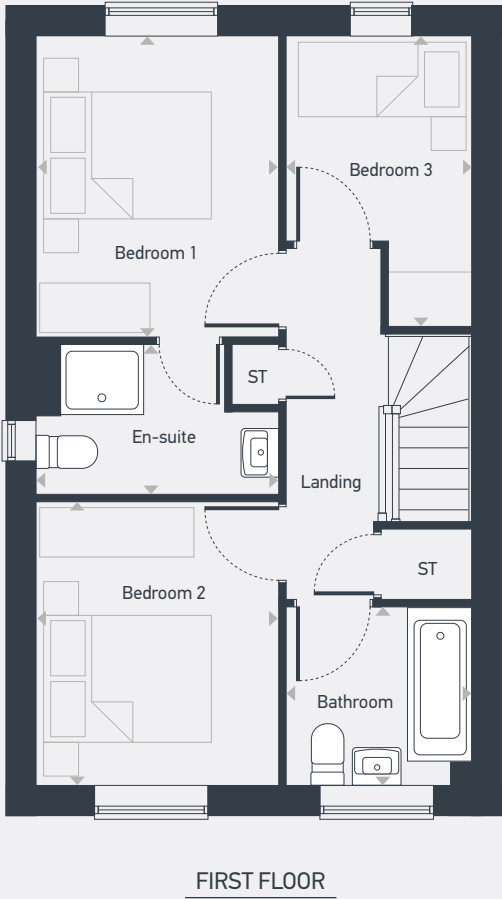
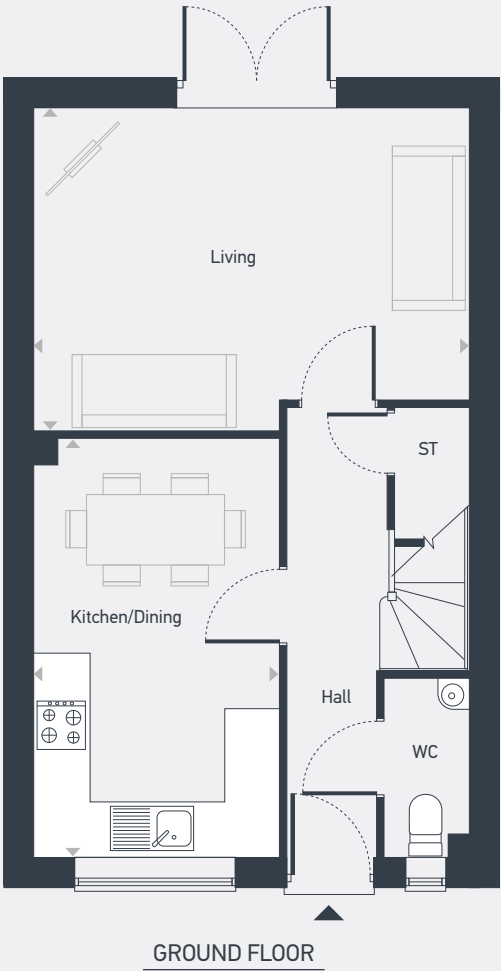




Plots as drawn: 13
Handed: 22 and 53

78.42 sq.m / 844 sq.ft



ST: Store WC: Water Closet

DIMENSIONS	m	ft
Kitchen/Dining	4.61m x 2.69m	15'1" x 8'10"
Living	4.76m x 3.53m	15'7" x 11'7"

DIMENSIONS	m	ft
Bedroom 1	3.31m x 2.64m	10'10" x 8'8"
En-suite	2.64m x 1.64m	8'8" x 5'5"
Bedroom 2	3.10m x 2.64m	10'2" x 8'8"
Bedroom 3	3.19m x 2.03m	10'6" x 6'8"
Bathroom	2.03m x 1.94m	6'8" x 6'4"



centralandnorthsales@placesforpeople.co.uk | placesforpeople.co.uk/sherwin-gardens
Sherwin Gardens, Sidings Lane, Bramcote, Nottingham NG9 3GJ

Please note: All layouts and floor plans, configurations, maps and information are intended for guidance only and accuracy of this information cannot be relied upon by prospective purchasers who must make their own enquiries to satisfy themselves by inspection or otherwise as to the correct detail.