

The Poplar v3

Calthorpe Gardens (Phase 2), Banbury

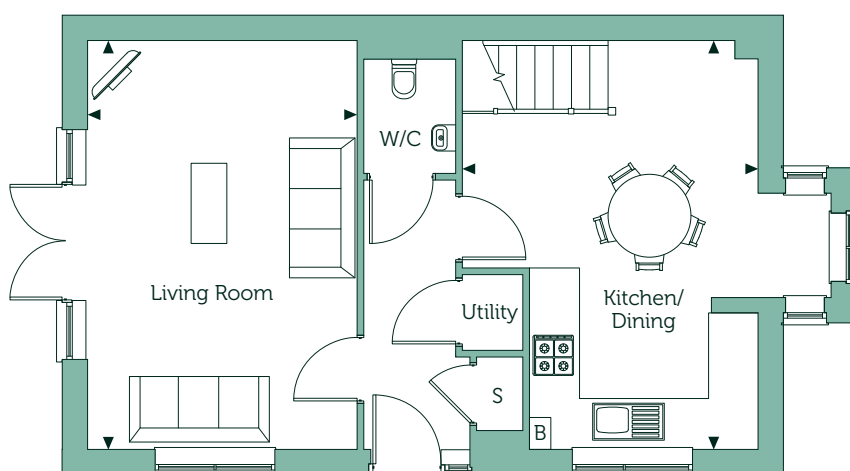
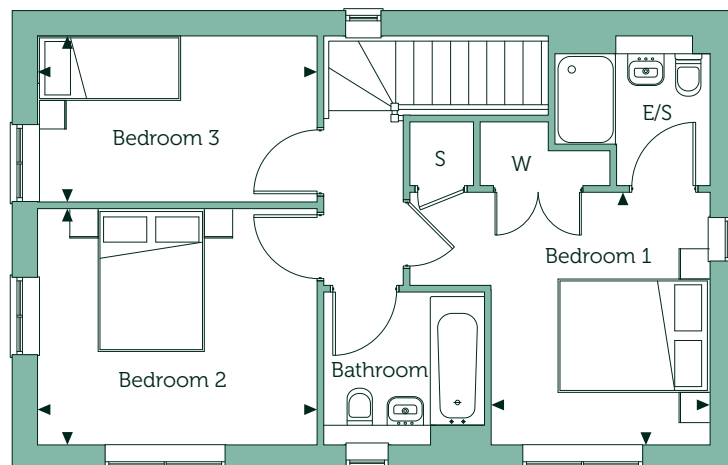
Three Bedroom Home

Plots 56, 57 & 83



The Poplar v3

Calthorpe Gardens (Phase 2), Banbury



Ground Floor

Kitchen/Dining

17'7" x 12'9"

5.37m x 3.89m

Living Room

17'7" x 11'8"

5.37m x 3.56m

First Floor

Bedroom 1

11'4" x 9'4"

3.46m x 2.84m

Bedroom 2

10'2" x 12'0"

3.11m x 3.67m

Bedroom 3

7'1" x 12'0"

2.17m x 3.67m

Gross internal area

1037 sqft

96.3 sqm

Key

B Boiler S Store Cupboard W Wardrobe

Floorplans are not drawn to scale. Measurements are taken from areas marked with an arrow. They are maximum approximate dimensions and given as a guide only. These should not be used as a basis for purchasing flooring or furniture. Orbit reserve the right to alter plans, specifications, position of doors and windows and change tenure subject to demand without prior notice. External elevations vary from plot to plot. Please ask your Sales Consultant for current information when reserving your new home. Information correct at time of going to print. Computer generated image is to be used for guidance only.