





Spend less on rent – and save for your Shared Ownership home

Saving for a deposit can be hard when you're renting. But with SO Flexi it's much easier. Just choose a great place to live and pay a lower-than-market rent, while you save up to buy your home with Shared Ownership.

How does it work?

- Choose a high quality home from the wide range on offer
- Check you're eligible and apply – our team will help
- Live in your new home for at least three years, paying a lower-than-market rent
- Save up the deposit to buy your home with Shared Ownership

Who can benefit?

SO Flexi is helping as many people as possible save up for their first home. Talk to us today if you can't afford to buy in your local area, even with Shared Ownership, and you:

- Have a formal rental tenancy or an informal arrangement with family or friends
- Are in full or part-time employment and able to save whilst paying rent
- Have a household income below £60,000
- Don't own any other residential home

Why wait any longer to live the way you want to?

Get in touch with our friendly team today to check you're eligible and apply.

Search SO Flexi
Visit soflexi.co.uk

Feel at home



This is a computer generated image and are for illustrative purposes only. Customers should not rely on this image

SO Flexi Southall is a collection of studio, 1, 2 & 3-bedroom apartments which are part of a smart new development nestled in the established residential area of Beaconsfield Road.

Picture bright and spacious open-plan living, stylish fixtures and fittings, plus your own private outdoor space for taking time out with neighbours and friends in the summer months. It's all here and more at SO Flexi Southall.

The area	4
Connectivity	8
Development overview	11
Plot locator	14
Specification	18
Floorplans	20



This is a computer generated image and are for illustrative purposes only. Customers should not rely on this image

A dynamic and evolving community

Vibrant and diverse, the West Ealing district of Southall is best known for its rich cultural heritage and strong sense of community. Its Asian influence is reflected in colourful shops, restaurants and cultural festivals. Great schools attract families and the speedy Elizabeth line bringing a new generation of professionals into the area.

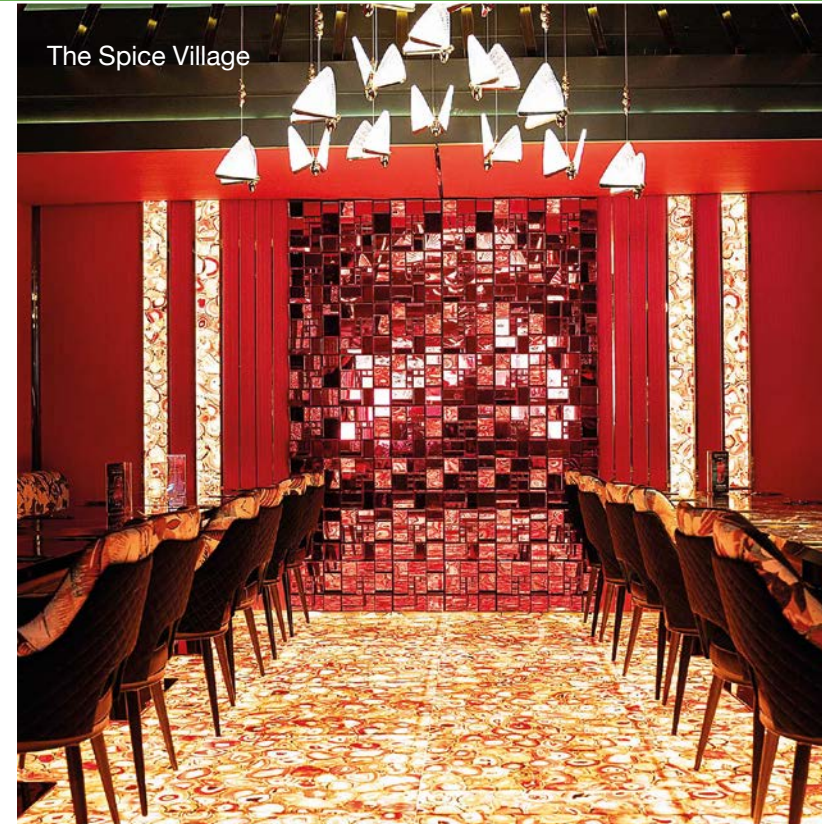
The beautifully kept gardens, paths and play areas of Southall Park are just a few minutes' walk from home, with strategically placed gym equipment, tennis courts and sports pitches to appeal to fitness enthusiasts. A thriving high street and market just moments north put shopping, socialising and some of London's top foodie haunts within easy reach.



Quality is at the heart of everything we do here at CakeCo, but above all is the satisfaction of seeing our happy customers.

CakeCo Southall

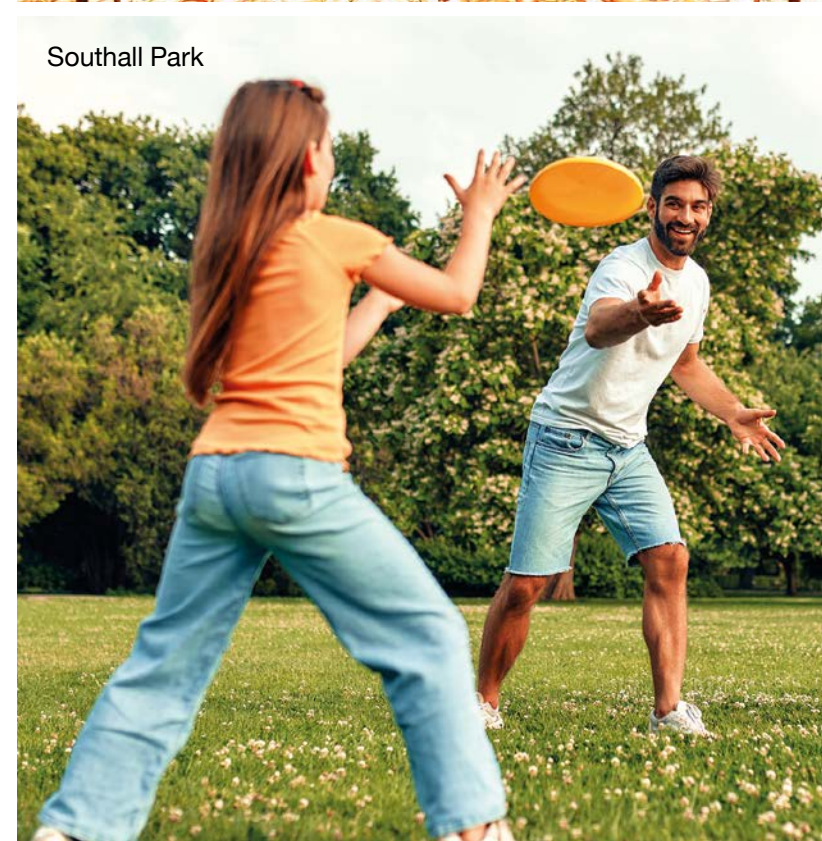
The Spice Village



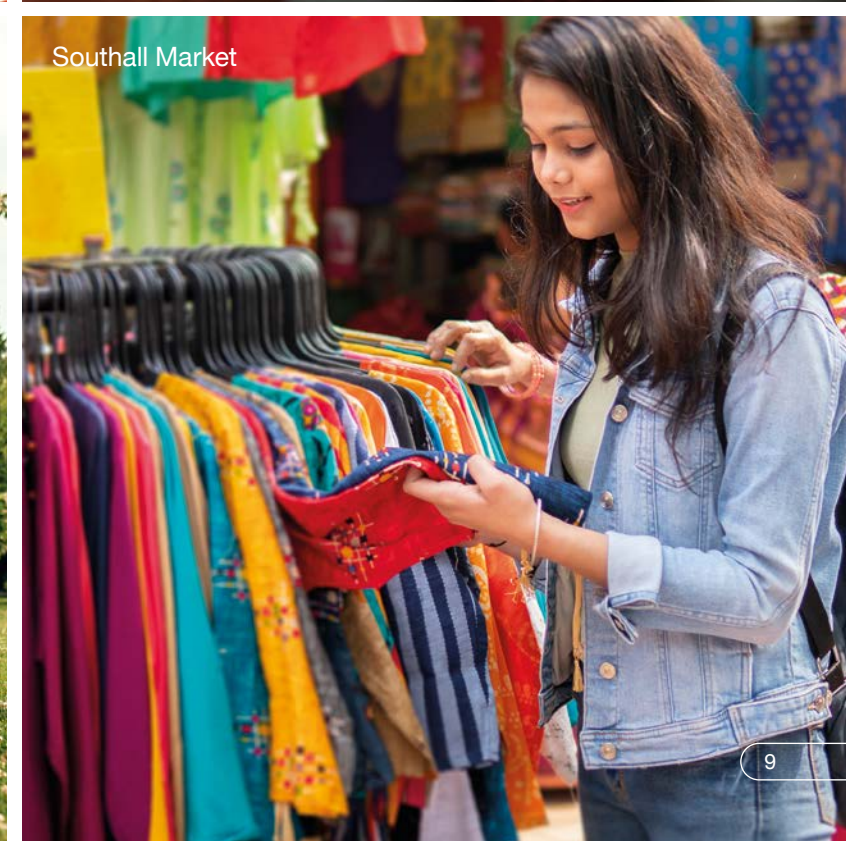
CakeCo



Southall Park



Southall Market



Top spots in Southall

01. Hillingdon Cycle Circuit

Just a few minutes west over Hayes Bridge, you'll discover the Hillingdon Cycle Circuit – a purpose-built, 1.5 km closed road bike track set in the scenic Minet Country Park. Safe, traffic-free and available for all ages and abilities, it's a popular spot for training, races, and cycling clubs. Visit hillingdoncyclecircuit.org.uk to check out the calendar of events and book.

02. Hanwell Zoo

Small but perfectly formed, this charming conservation and education-focused zoo in Brent Lodge Park is home to a wide variety of animals, including meerkats, lemurs, exotic birds, reptiles and even a pair of otters. Take a picnic and make a day of it – there's a lot going on, including regular feeding sessions and fascinating talks with Hanwell's passionate and knowledgeable staff team.

03. The Sharks in Southall canoe club

This friendly watersports community offers a range of canoeing and kayaking activities. Take up lessons, paddle for fun or get competitive with sprint and slalom training. The club provides all the kit you need, offers a range of pay-as-you-go and membership options, and has experienced instructors on hand to help – whether you're an experienced paddler or just dipping your toe in the water.

04. Creams Café

If you're a puddings person, you're in the right postcode. Just minutes from home, you'll find Creams Café, offering a mouthwatering menu of waffles, crêpes and sundaes, cakes, sorbets, vegan desserts and their famous gelato – hand-made using authentic Italian ingredients. You'll find your home-from-home just up the Hambrough Road – or on all the major delivery services for those days when you'd rather enjoy pudding in your PJs.

05. Madhu's

A cornerstone of Southall's dining scene, this family-run restaurant has been dishing up excellence for over four decades. Renowned for its signature dishes, the menu features gourmet Punjabi cuisine with a Kenyan twist, crafted from secret family recipes. The elegant interior provides a refined setting for both intimate dinners and larger gatherings, offering an authentic and memorable dining experience.

06. Gifto's

A Southall institution, Gifto's Lahore Karahi is an authentic Pakistani restaurant located on The Broadway. Known for fresh ingredients and homemade masalas, its menu offers a rich selection of flavoursome dishes inspired by traditional recipes. Spacious and contemporary, Gifto's caters for cosy dinners and lively celebrations, providing an inviting setting to enjoy its celebrated cuisine. A true destination for food lovers, the restaurant delivers an experience that's both vibrant and unforgettable.



01



02



03



04



05



06

Effortless connections

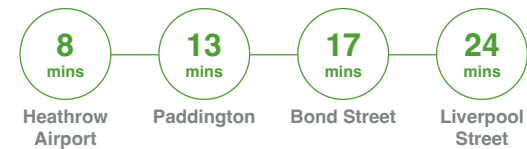
You couldn't ask for a more conveniently located Southall home – just 5 minutes' walk from Southall's brand new Elizabeth line station, connecting you to Heathrow in just 8 minutes, Paddington in under 15 and Canary Wharf in a mere half hour. For local hops, there are fast and frequent bus services and plentiful cycle routes, many of them hugging the scenic Grand Union Canal. You're even well placed for the M4 when only four wheels will do.



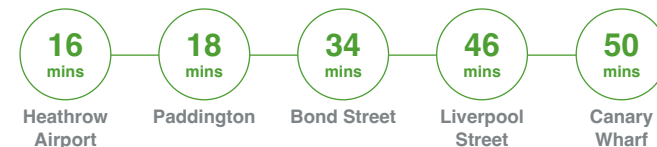
Walk



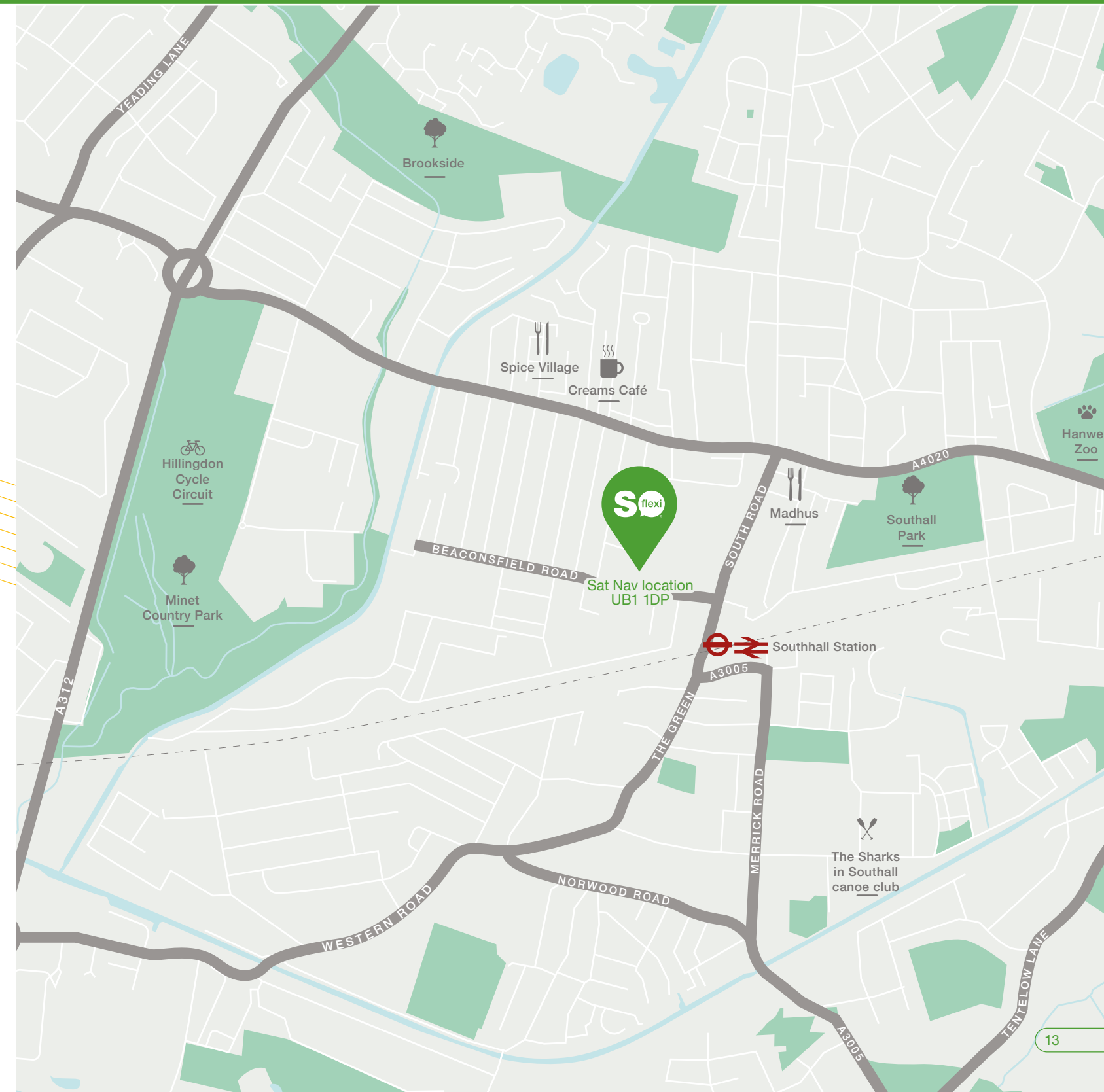
Elizabeth line



Train / Mainline Train



Travel times are taken from Google and can vary depending on the time of day.



The development



Sat Nav location
UB1 1DP

With the arrival of the Elizabeth line, Southall has become an exciting new hub for investment and regeneration. The Beaconsfield Road development is one of the latest highlights – car-free by design, using high-quality materials, cutting-edge construction techniques and technologies such as air source heat pumps, it's a future-thinking development designed for modern lifestyles.

For school runs in seconds, Beaconsfield Primary is practically on your doorstep, together with the Southall campus of West London College. You'll also find gyms, shops and supermarkets within easy reach, as well as a thriving social scene centred in The Broadway and The Green.

Key

Core A - Social Rent	Foyer & Hallways
Core B - SO Flexi	Internal Bin Store
Core C - SO Flexi	Plant Room
Cycle store	
Substation	

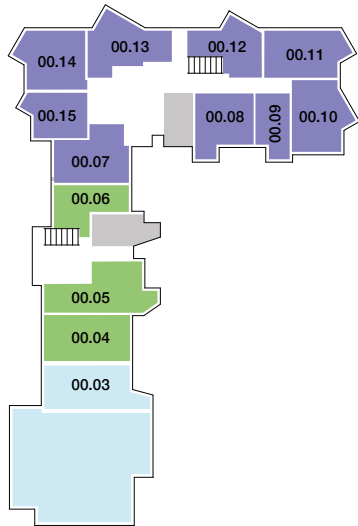
The site layout is intended for illustrative purposes only and is subject to change.



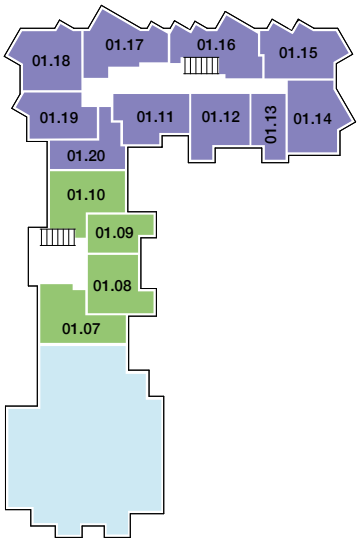


Plot locator

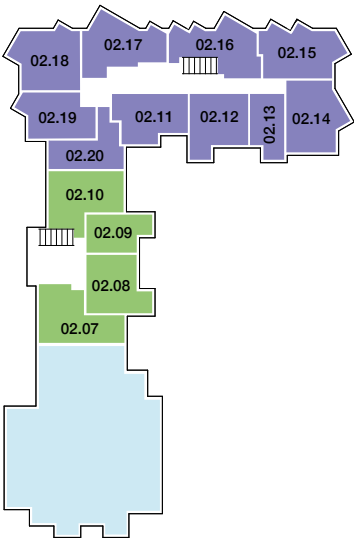
Ground floor



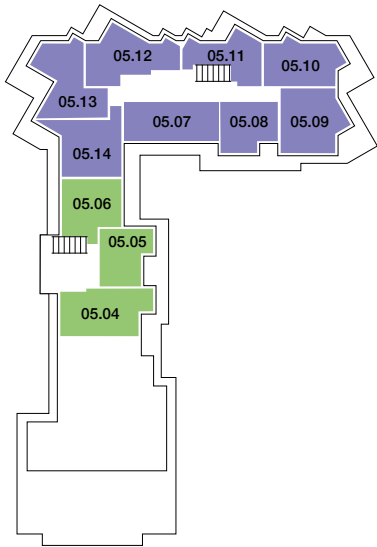
First floor



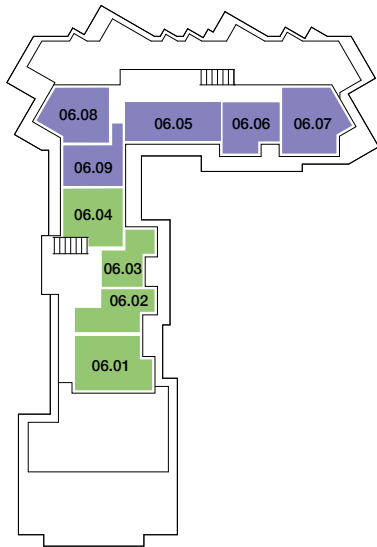
Second floor



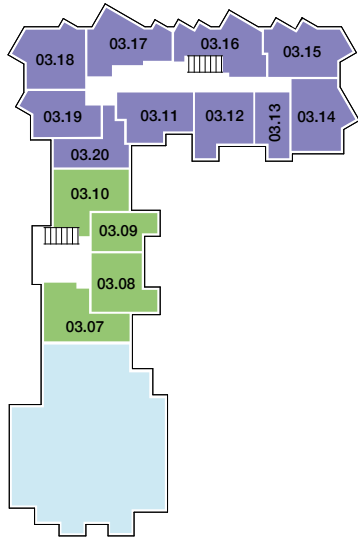
Fifth floor



Sixth floor



Third floor



Fourth floor



The site layout is intended for illustrative purposes only and is subject to change.

Key

- Core A - Social Rent
- Core B - SO Flexi
- Core C - SO Flexi
- Stairwell

N

This is a computer generated image and are for illustrative purposes only. Customers should not rely on this image





Your home, your way

SO Flexi Southall homes are crafted for modern, low-maintenance living, where thoughtful design meets everyday comfort. Each apartment offers bright, welcoming spaces that perfectly balance style and practicality

From sleek kitchens with integrated appliances to Amtico flooring and cosy, carpeted bedrooms, every detail has been chosen to make your home a place to relax, unwind, and enjoy life your way.

Kitchen, Living & Dining

Premier Hardwick laminate base and wall units
Aurora chrome finished dimmable LED downlights
LED strip lights to underside of wall units
Laminate Silver Oak worktop and upstand
Blanco Livit II stainless steel sink
Bristan Cinnamon chrome mixer tap
Stainless steel hob splashback
Electrolux integrated appliances
Electric 4 burner hob
Fixed 10L recycle bins under sink
Amtico Spacia flooring in Weathered Oak
Electrolux washer / dryer

Bathroom & Ensuites

LED dimmable fire-rated downlights
Ideal Standard white sanitaryware
Environment Infinity extractor fan
Mission Shaker bath panel in matt white
Lakes Prospect 1200mm shower enclosure
Hansgrohe Focus chrome mixer tap
Square plate Ideal Standard shower mixer with diverter
Vado showerhead
Esteem electric towel rail in polished chrome
Deta Slimline shaver point
Minoli 300 x 600mm Acron white wall tiles
Amtico First Weathered Oak floor

Specifications stated in this brochure are for guidance only. These particulars do not constitute any part of an offer or contract and are subject to change.



General

Landscaped communal outdoor space
Private balconies to all homes
White Stelrad compact K3 radiators
CP4B programmable thermostat
Gemini Termix 7 series heat interface unit
Deta pendant lighting to bedroom and hallway
Fire-rated LED downlights to living and bedroom
Light grey CFS Kensington carpets to bedrooms
Premdor Ladder internal doors in white
Vicaima Dekordoor entrance door in Ash Grey
Carlisle Brass Satin door handles to entrance door
Dulux/Armstead Supermatt White walls and ceilings
Satellite and BT broadband provision
Mechanical Ventilation with Heat Recovery (MVHR) system in storage area providing limited space.

This is a computer generated image and are for illustrative purposes only. Customers should not rely on this image

Security & Peace of Mind

Smoke alarm and carbon monoxide detector
Entrotec Audio / video entry intercom system
CCTV provision to apartment block
Cycle storage
Fob-activated door entry system to apartment block
180-degree viewer to front door of all units

Type 7

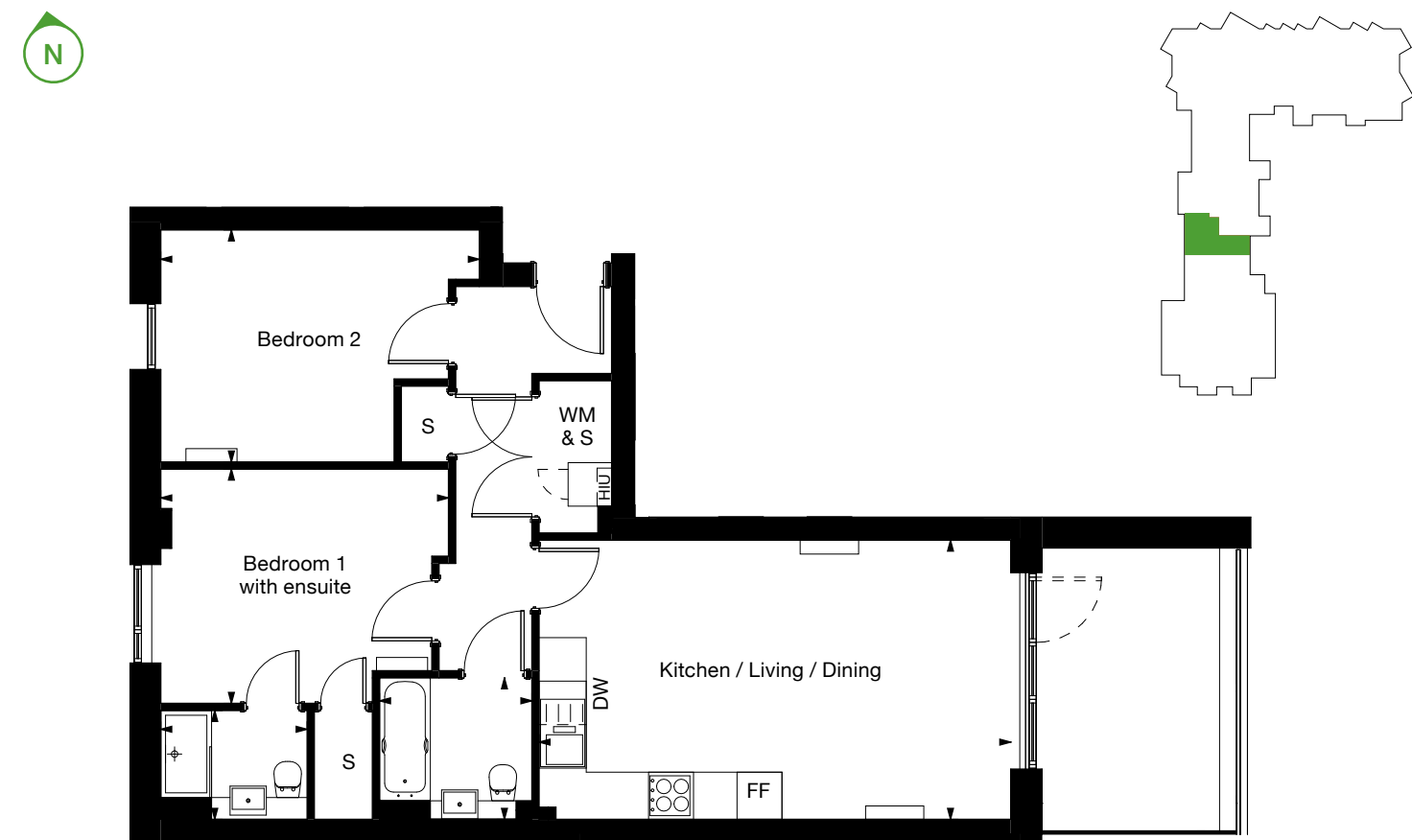
2 bedroom apartment

Core B

Floor	1 st	2 nd	3 rd	4 th
Plots	1.07	2.07	3.07	4.07

Kitchen / Living / Dining	6.5m x 3.8m	21' x 13'
Bedroom 1	3.9m x 3.2m	13' x 11'
Bedroom 2	4.3m x 3.2m	14' x 10'
GIA	70 sq m	756 sq ft

Key
DW - Dish Washer | FF - Fridge Freezer | WM - Washing Machine | S - Store | HIU - Heat Interface Unit



Type 8

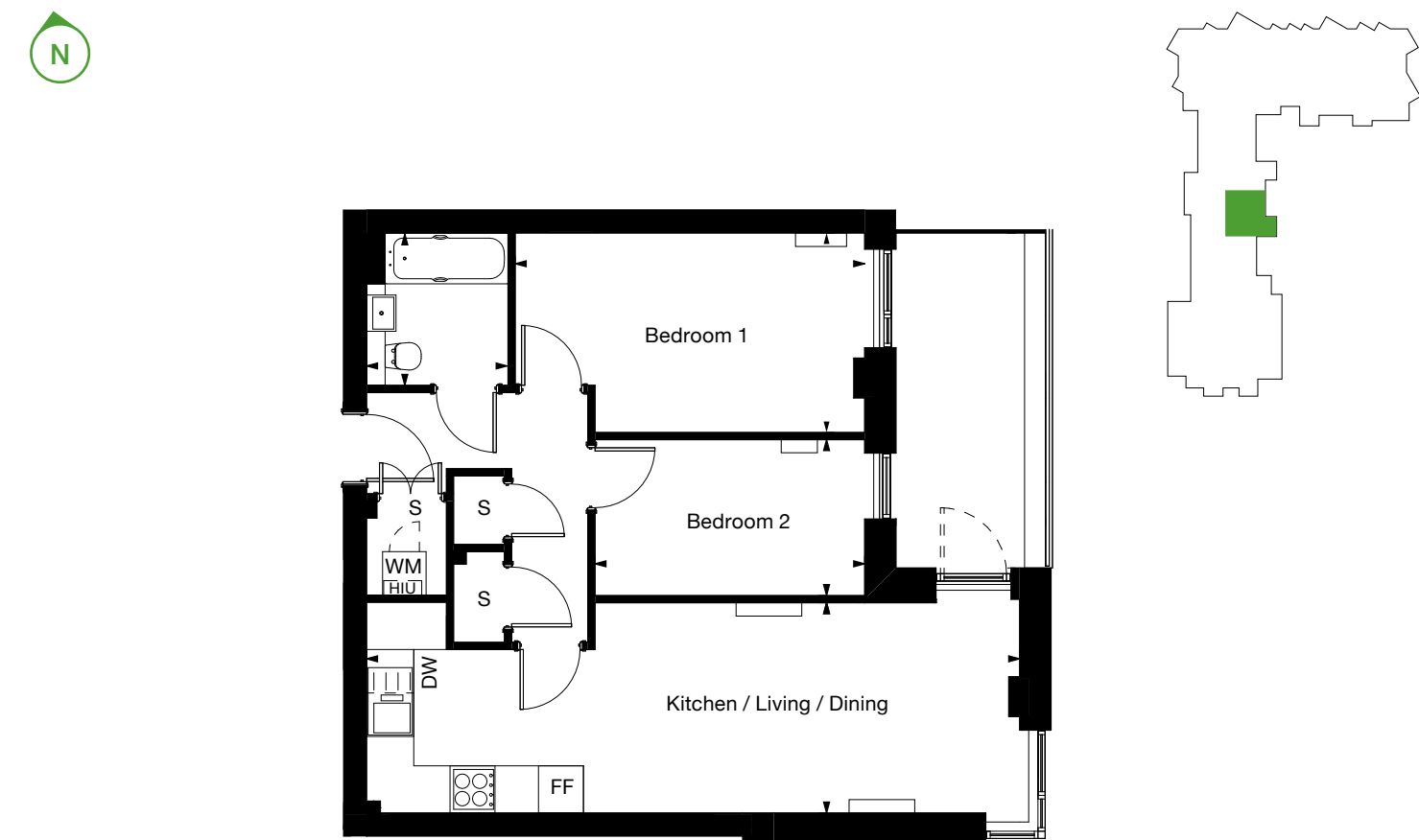
2 bedroom apartment

Core B

Floor	1 st	2 nd	3 rd	4 th
Plots	1.08	2.08	3.08	4.08

Kitchen / Living / Dining	6.5m x 3.8m	21' x 13'
Bedroom 1	3.9m x 3.2m	13' x 11'
Bedroom 2	4.3m x 3.2m	14' x 10'
GIA	61 sq m	659 sq ft

Key
DW - Dish Washer | FF - Fridge Freezer | WM - Washing Machine | S - Store | HIU - Heat Interface Unit



Type 9

1 bedroom apartment

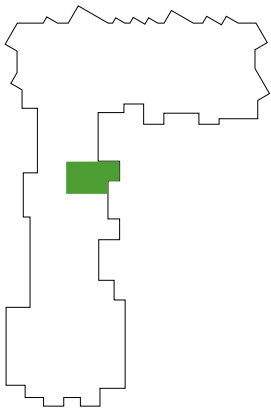
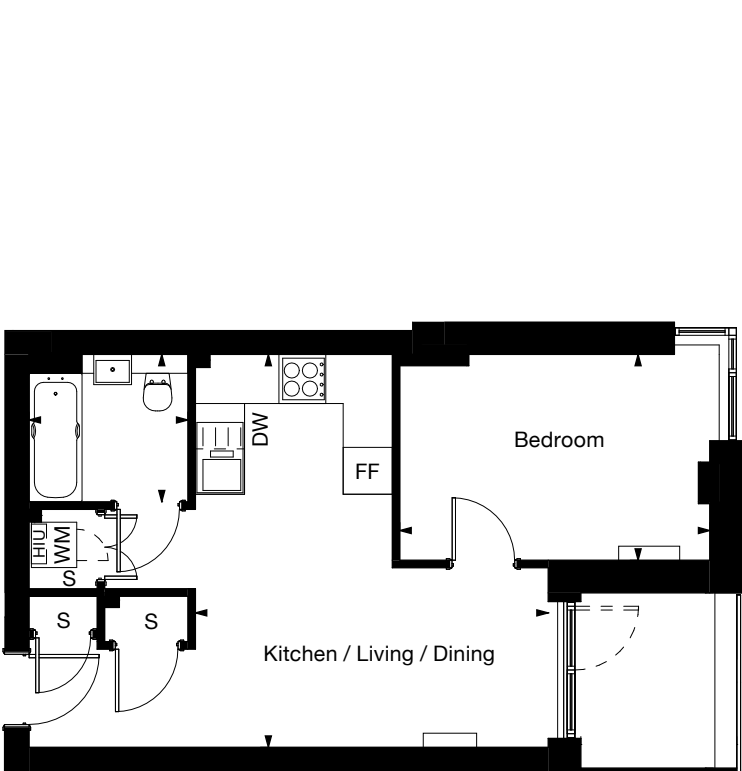
Core B

Floor	1 st	2 nd	3 rd	4 th
Plots	1.09	2.09	3.09	4.09

Kitchen / Living / Dining	4.6m x 5.1m	15' x 17'
Bedroom	4.1m x 2.7m	13' x 9'
GIA	41 sq m	446 sq ft

Key

DW - Dish Washer | FF - Fridge Freezer | WM - Washing Machine | S - Store | HIU - Heat Interface Unit



Type 10

2 bedroom apartment

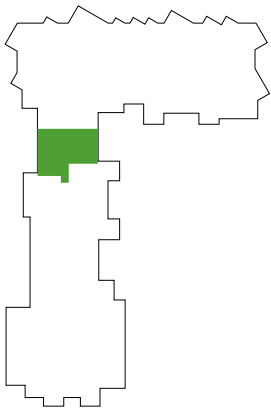
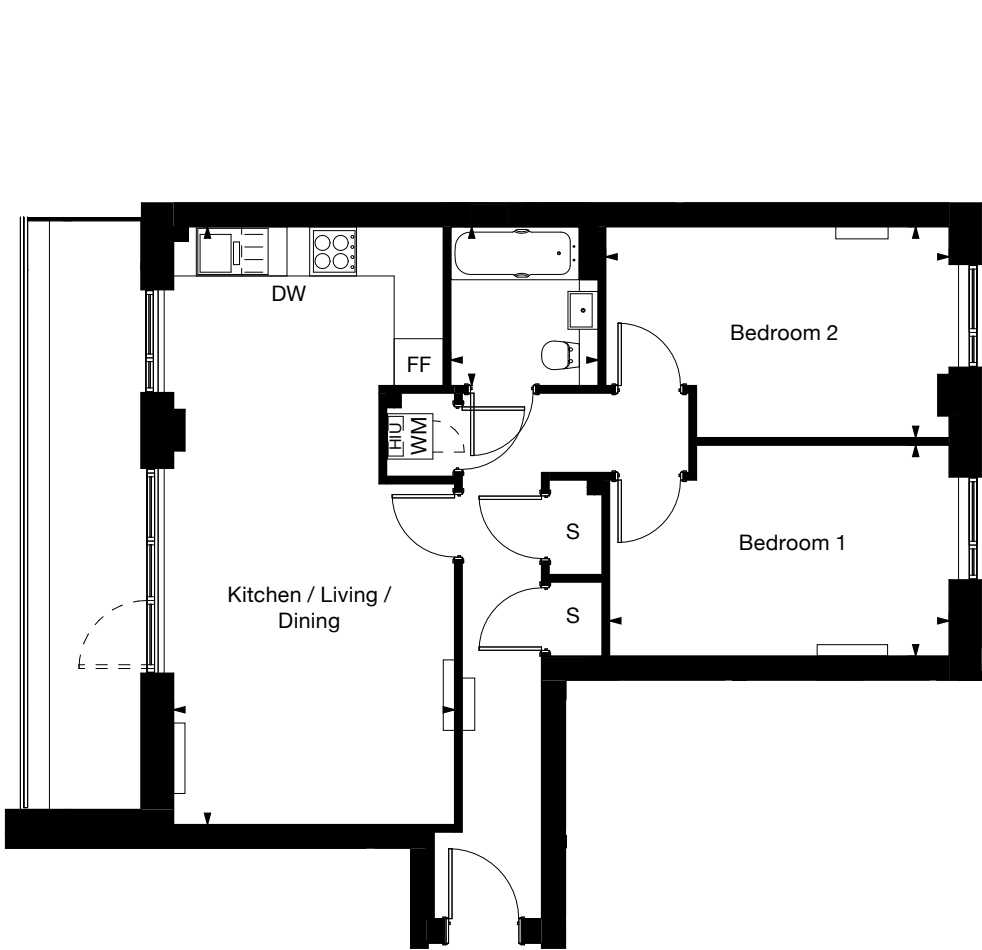
Core B

Floor	1 st	2 nd	3 rd	4 th
Plots	1.10	2.10	3.10	4.10

Kitchen / Living / Dining	3.7m x 7.9m	12' x 26'
Bedroom 1	4.4m x 2.7m	15' x 9'
Bedroom 2	4.5m x 2.7m	15' x 9'
GIA	70 sq m	762 sq ft

Key

DW - Dish Washer | FF - Fridge Freezer | WM - Washing Machine | S - Store | HIU - Heat Interface Unit



Type 11

2 bedroom apartment

Core C

Floor	1 st	2 nd	3 rd	4 th
Plots	1.11	2.11	3.11	4.11

Kitchen / Living / Dining	4.9m x 5.3m	16' x 17'
Bedroom 1	2.7m x 4.2m	9' x 14'
Bedroom 2	2.1m x 4.2m	7' x 14'
GIA	61 sq m	659 sq ft

Key
DW - Dish Washer | FF - Fridge Freezer | WM - Washing Machine | S - Store | HIU - Heat Interface Unit



Type 12

2 bedroom apartment

Core C

Floor	G	1 st	2 nd	3 rd	4 th
Plots	0.08	1.12	2.12	3.12	4.12

Kitchen / Living / Dining	2.8m x 9m	9' x 30'
Bedroom 1	2.7m x 4.6m	9' x 15'
Bedroom 2	2.1m x 3.8m	7' x 12'
GIA	61 sq m	659 sq ft

Key
DW - Dish Washer | FF - Fridge Freezer | WM - Washing Machine | S - Store | HIU - Heat Interface Unit



Type 13

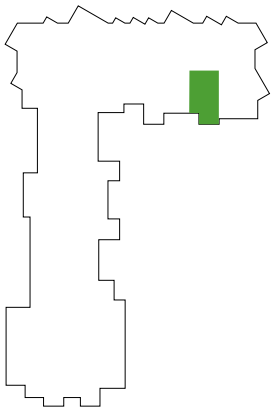
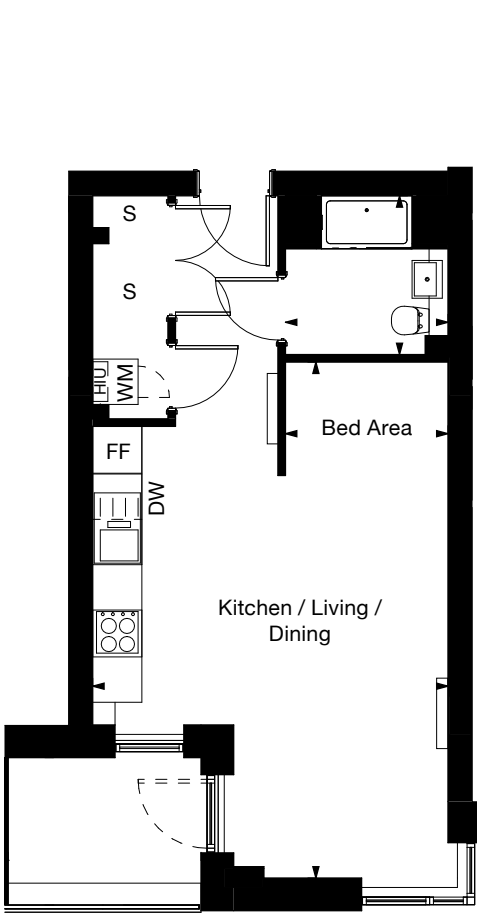
Studio apartment

Core C

Floor	G	1 st	2 nd	3 rd	4 th
Plots	0.09	1.13	2.13	3.13	4.13

Kitchen / Living / Dining	4.7m x 6.8m	15' x 22'
Bed Area	2.1m	7'
GIA	38 sq m	415 sq ft

Key
DW - Dish Washer | FF - Fridge Freezer | WM - Washing Machine | S - Store | HIU - Heat Interface Unit



Type 14

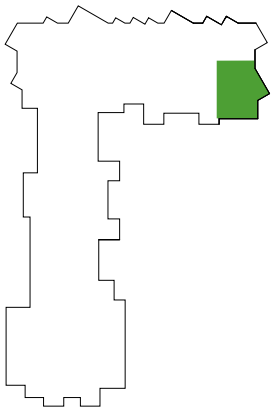
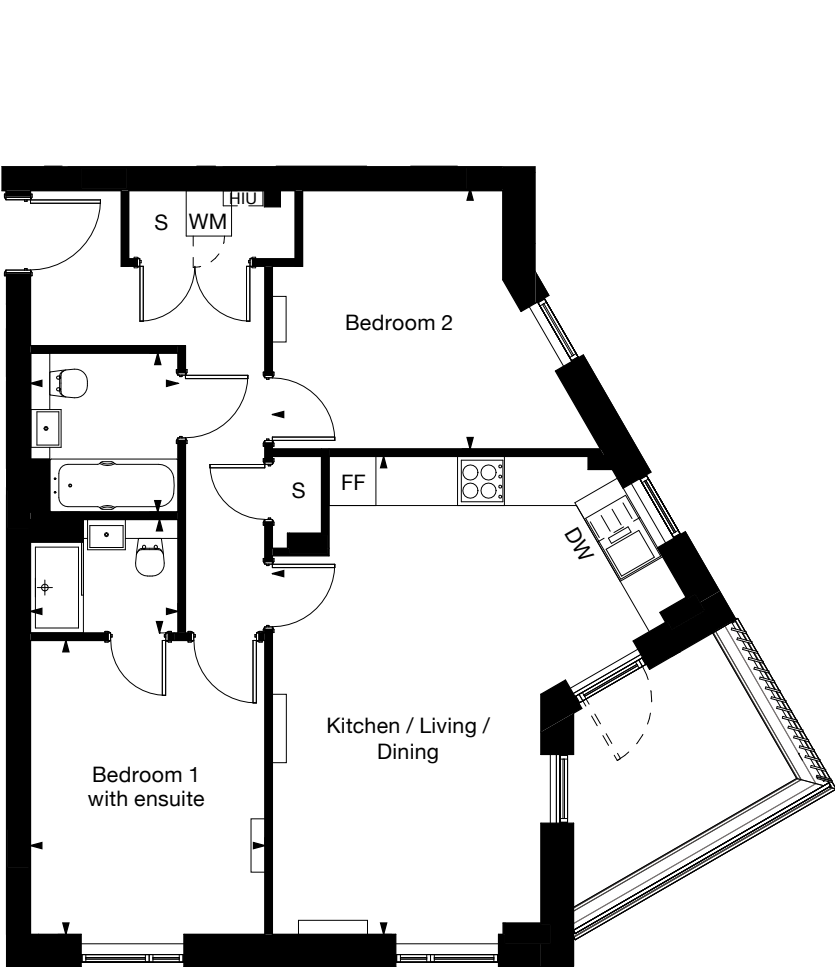
2 bedroom apartment

Core C

Floor	1 st	2 nd	3 rd	4 th
Plots	1.14	2.14	3.14	4.14

Kitchen / Living / Dining	5.4m x 6.3m	18' x 21'
Bedroom 1	3.1m x 3.8m	10' x 13'
Bedroom 2	4.3m x 3.4m	14' x 11'
GIA	70 sq m	755 sq ft

Key
DW - Dish Washer | FF - Fridge Freezer | WM - Washing Machine | S - Store | HIU - Heat Interface Unit



Type 15

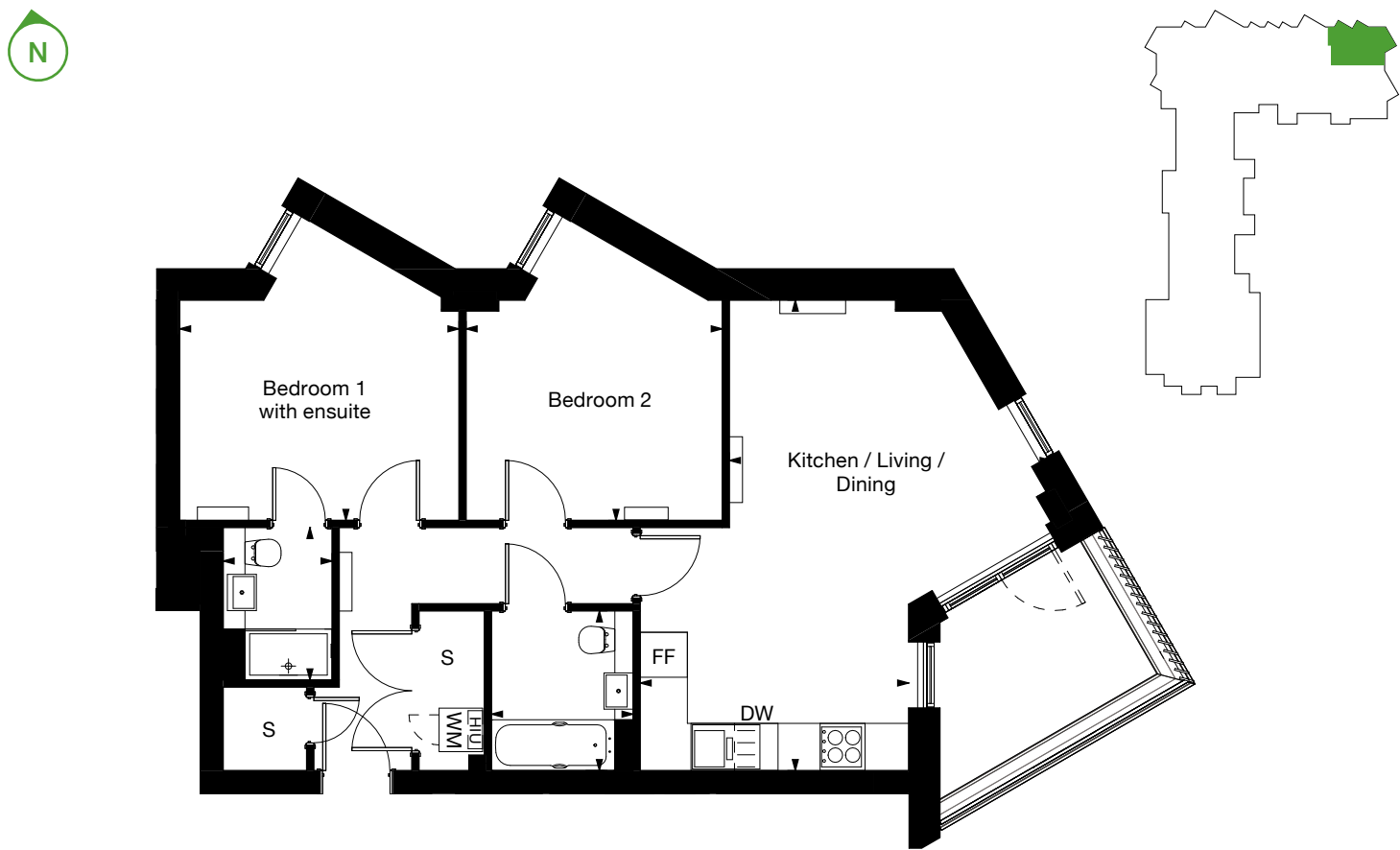
2 bedroom apartment

Core C

Floor	1 st	2 nd	3 rd	4 th
Plots	1.15	2.15	3.15	4.15

Kitchen / Living / Dining	4.4m x 6.4m	15' x 21'
Bedroom 1	3.8m x 4.1m	13' x 14'
Bedroom 2	3.5m x 4.1m	12' x 14'
GIA	70 sq m	762 sq ft

Key
DW - Dish Washer | FF - Fridge Freezer | WM - Washing Machine | S - Store | HIU - Heat Interface Unit



Type 16

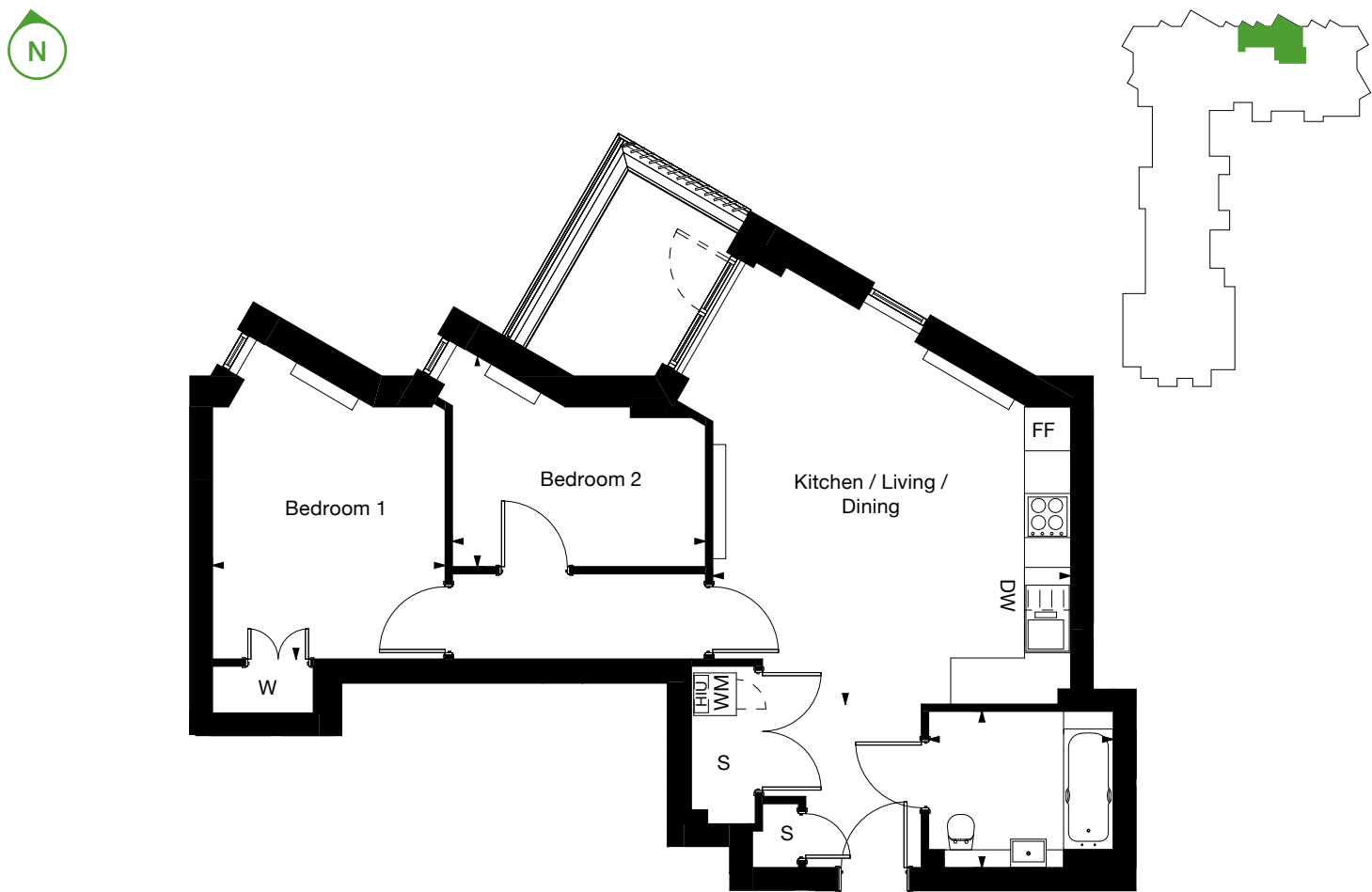
2 bedroom apartment

Core C

Floor	1 st	2 nd	3 rd	4 th
Plots	1.16	2.16	3.16	4.16

Kitchen / Living / Dining	5m x 6.2m	17' x 20'
Bedroom 1	3.2m x 4.4m	11' x 15'
Bedroom 2	3.5m x 3m	12' x 10'
GIA	68 sq m	731 sq ft

Key
DW - Dish Washer | FF - Fridge Freezer | WM - Washing Machine | S - Store | W - Wardrobe
HIU - Heat Interface Unit



Type 17

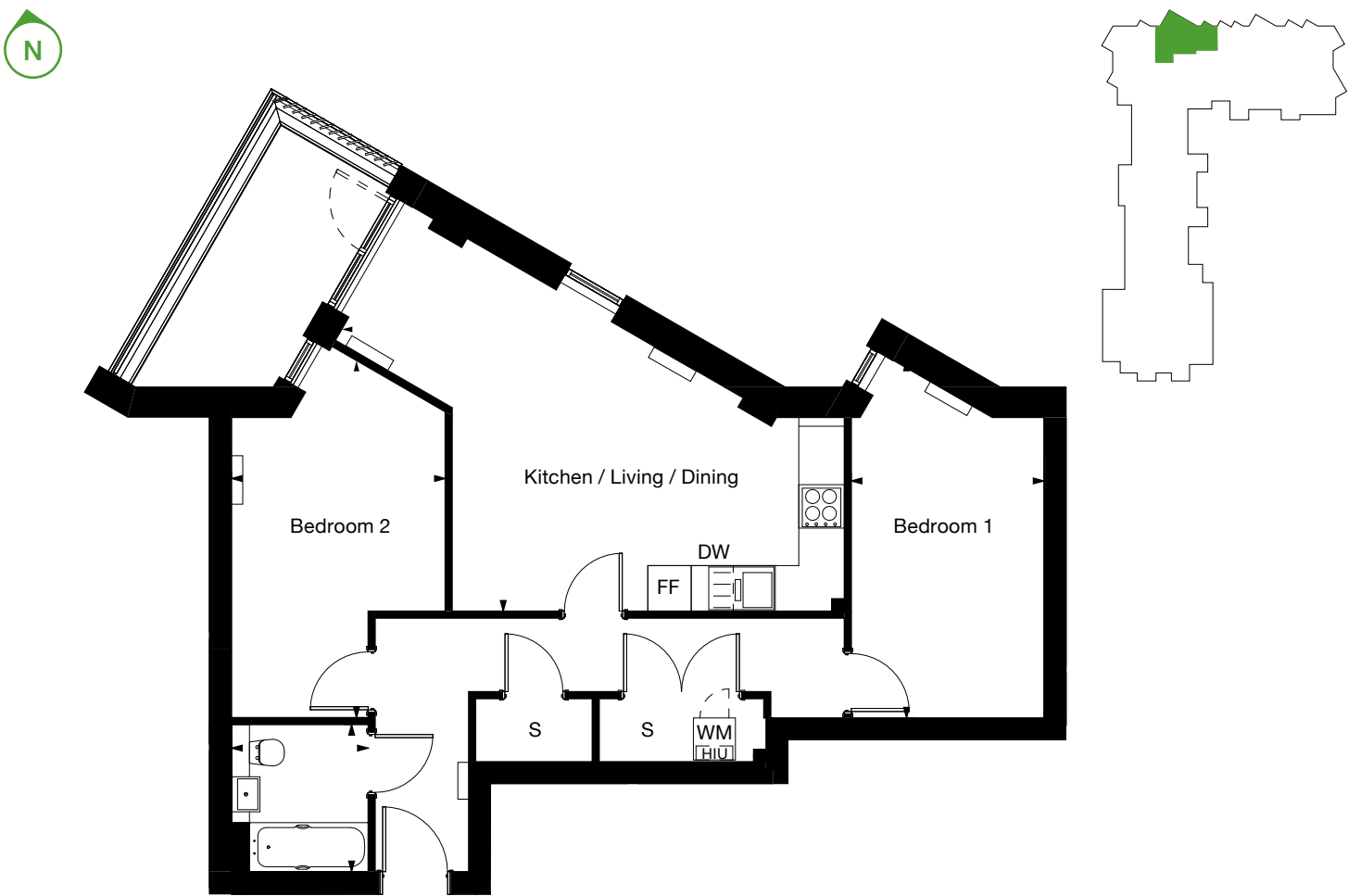
2 bedroom apartment

Core C

Floor	1 st	2 nd	3 rd	4 th
Plots	1.17	2.17	3.17	4.17

Kitchen / Living / Dining	7.2m x 5.7m	24' x 19'
Bedroom 1	2.7m x 5.1m	9' x 17'
Bedroom 2	3m x 5.3m	10' x 17'
GIA	71 sq m	764 sq ft

Key
DW - Dish Washer | FF - Fridge Freezer | WM - Washing Machine | S - Store | HIU - Heat Interface Unit



Type 18

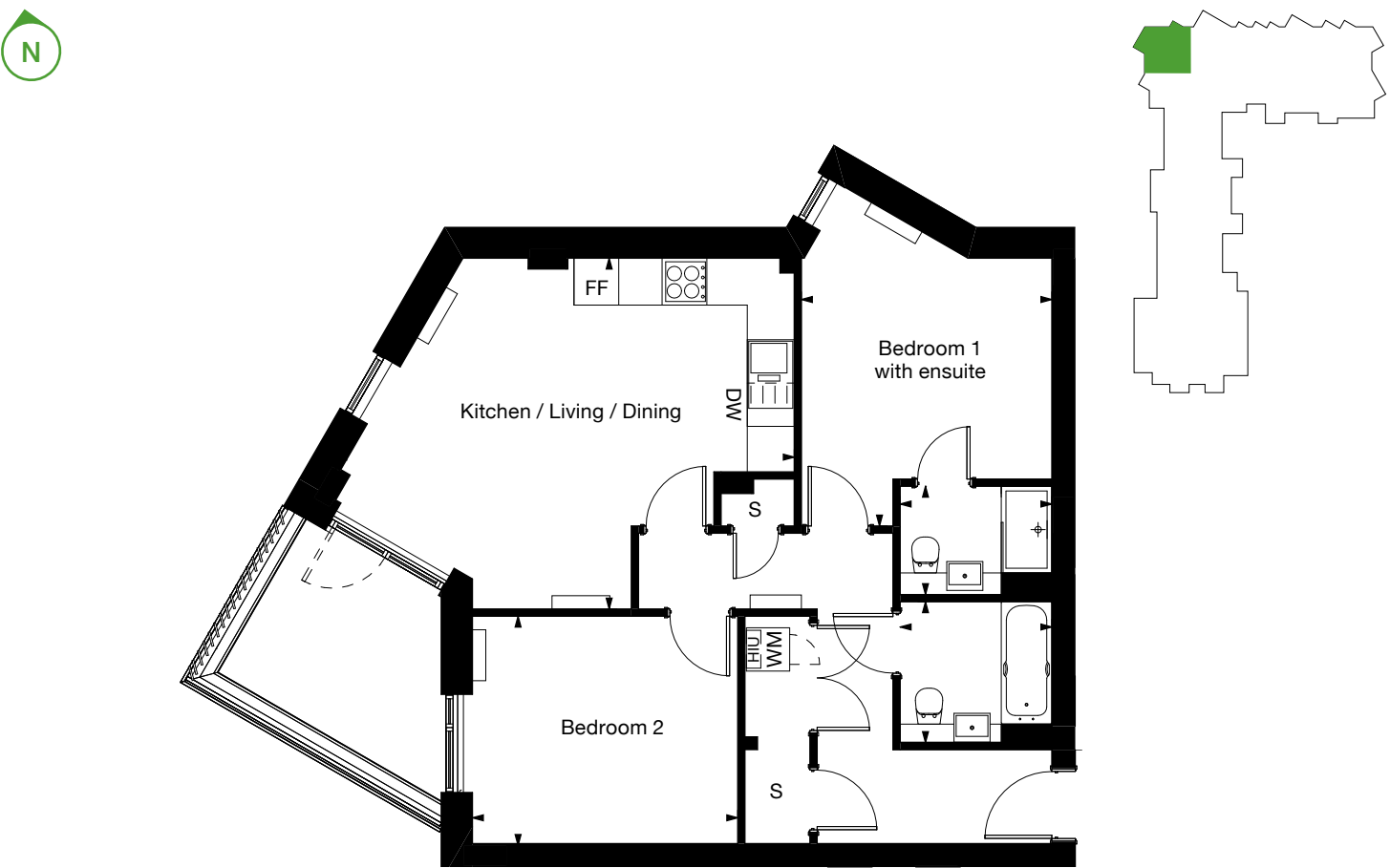
2 bedroom apartment

Core C

Floor	1 st	2 nd	3 rd	4 th
Plots	1.18	2.18	3.18	4.18

Kitchen / Living / Dining	6.3m x 4.8m	21' x 16'
Bedroom 1	3.4m x 4.6m	11' x 15'
Bedroom 2	3.6m x 3.1m	12' x 10'
GIA	71 sq m	763 sq ft

Key
DW - Dish Washer | FF - Fridge Freezer | WM - Washing Machine | S - Store | HIU - Heat Interface Unit



Type 19

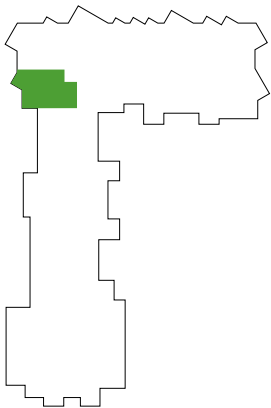
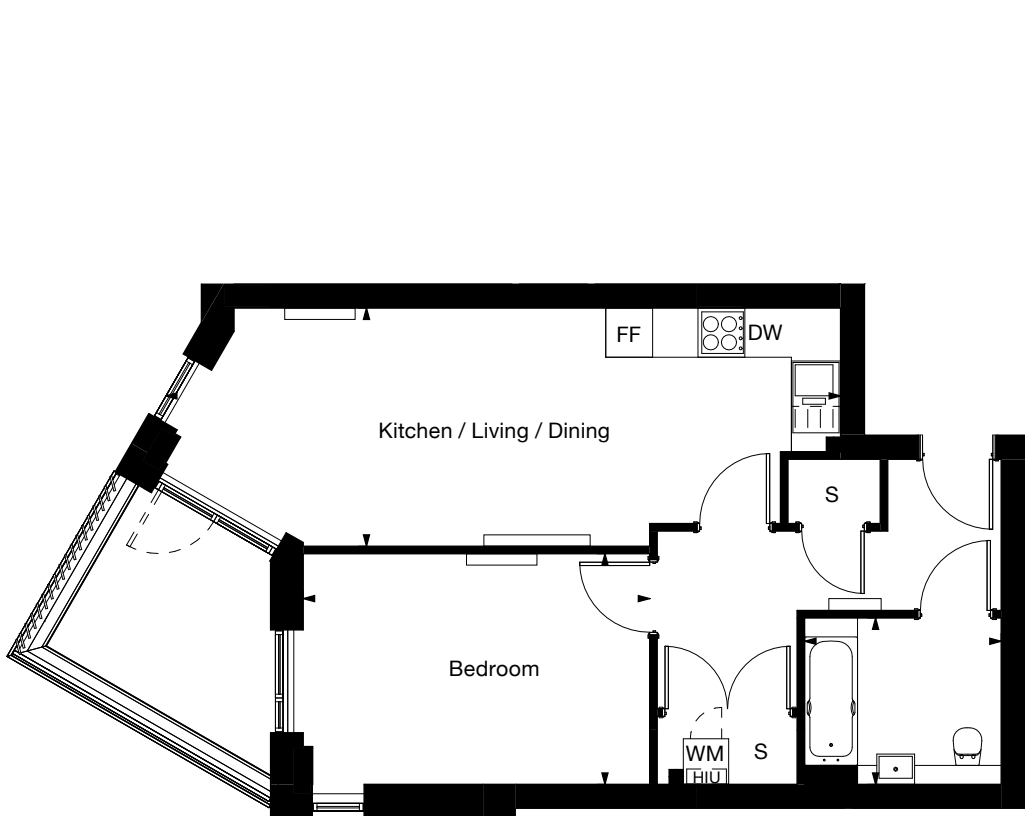
1 bedroom apartment

Core C

Floor	1 st	2 nd	3 rd	4 th
Plots	1.19	2.19	3.19	4.19

Kitchen / Living / Dining	8.9m x 3.1m	29' x 10'
Bedroom	4.5m x 3m	15' x 10'
GIA	57 sq m	620 sq ft

Key
DW - Dish Washer | FF - Fridge Freezer | WM - Washing Machine | S - Store | HIU - Heat Interface Unit



Type 20

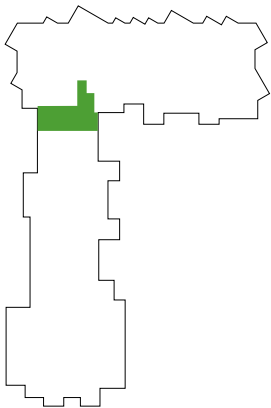
1 bedroom apartment

Core C

Floor	1 st	2 nd	3 rd	4 th
Plots	1.20	2.20	3.20	4.20

Kitchen / Living / Dining	6.6m x 3.9m	22' x 13'
Bedroom	3.5m x 4m	12' x 13'
GIA	50 sq m	540 sq ft

Key
DW - Dish Washer | FF - Fridge Freezer | WM - Washing Machine | S - Store | HIU - Heat Interface Unit



Type 21

2 bedroom apartment

Core C

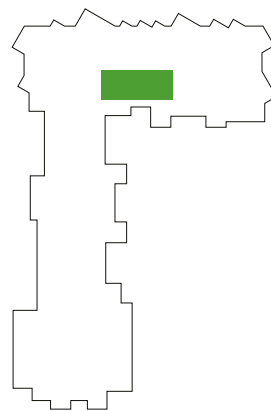
Floor 6th

Plots 6.05

Kitchen / Living / Dining	4.5m x 5.3m	15' x 17'
Bedroom 1	2.8m x 4.1m	14' x 9'
Bedroom 2	3.4m x 4.1m	11' x 14'
GIA	70 sq m	754 sq ft

Key

DW - Dish Washer | FF - Fridge Freezer | WM - Washing Machine | S - Store | HIU - Heat Interface Unit



Type 22

2 bedroom apartment

Core C

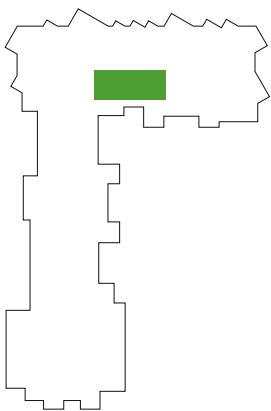
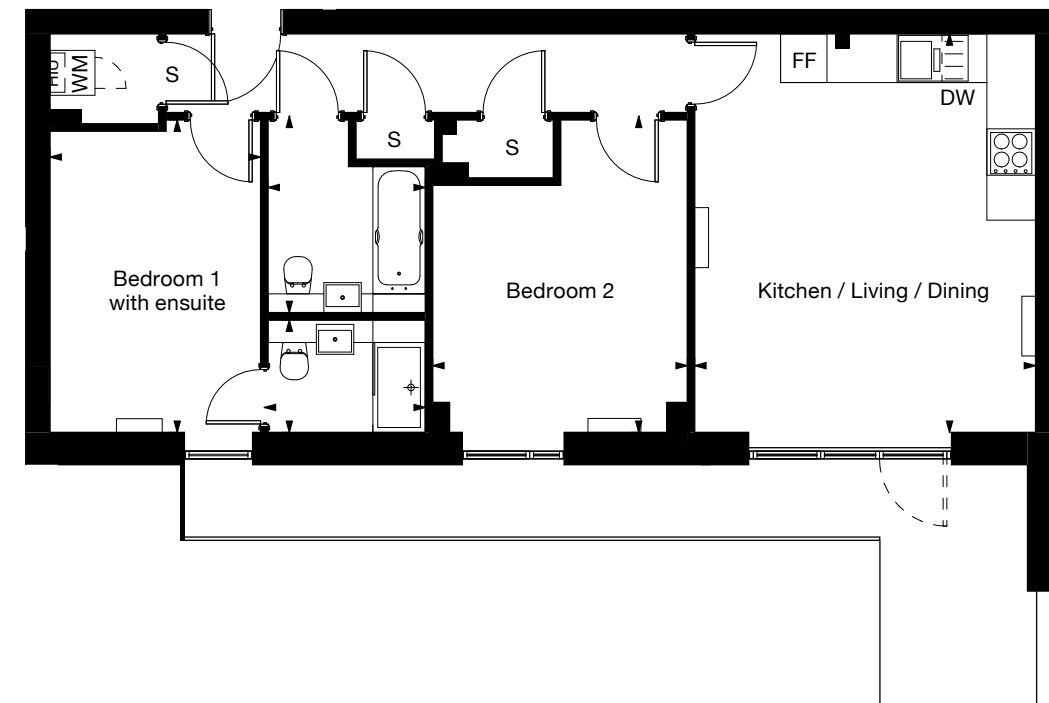
Floor 5th

Plots 5.07

Kitchen / Living / Dining	4.5m x 5.3m	15' x 17'
Bedroom 1	2.8m x 4.1m	14' x 9'
Bedroom 2	3.4m x 4.1m	11' x 14'
GIA	70 sq m	754 sq ft

Key

DW - Dish Washer | FF - Fridge Freezer | WM - Washing Machine | S - Store | HIU - Heat Interface Unit



Type 23

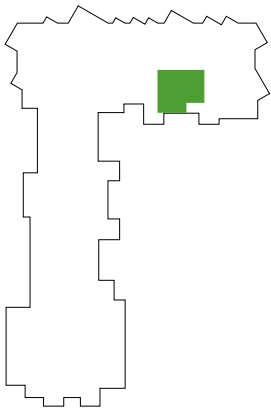
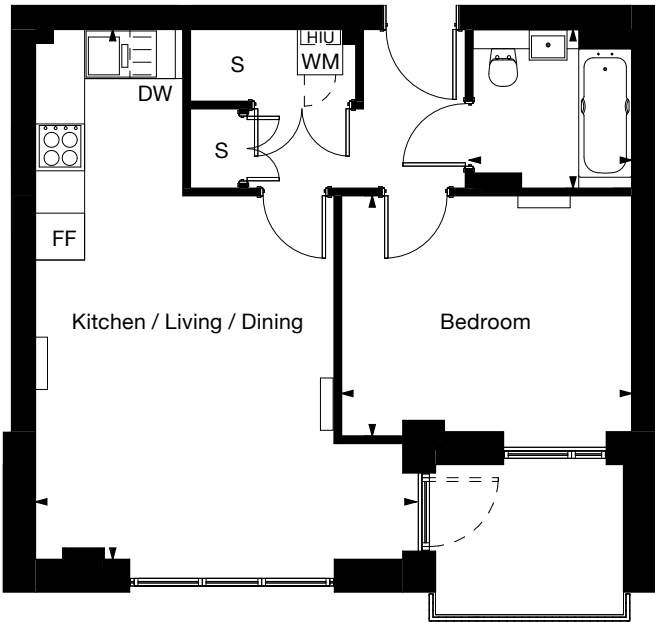
1 bedroom apartment

Core C

Floor	6 th
Plots	6.06

Kitchen / Living / Dining	4.8m x 7m	16' x 23'
Bedroom	3.8m x 3.1m	13' x 10'
GIA	50 sq m	540 sq ft

Key
DW - Dish Washer | FF - Fridge Freezer | WM - Washing Machine | S - Store | HIU - Heat Interface Unit



Type 24

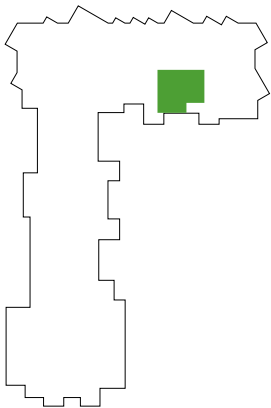
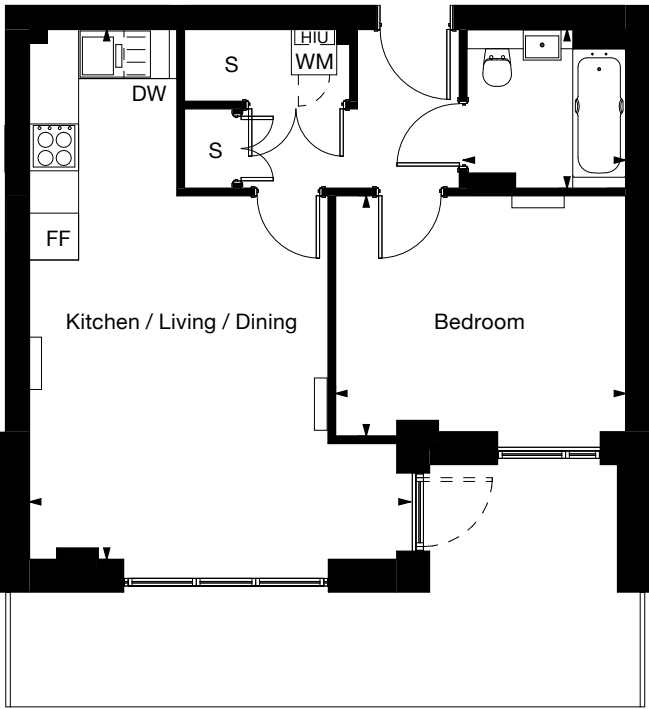
1 bedroom apartment

Core C

Floor	5 th
Plots	5.08

Kitchen / Living / Dining	4.8m x 7m	16' x 23'
Bedroom	3.8m x 3.1m	13' x 10'
GIA	50 sq m	540 sq ft

Key
DW - Dish Washer | FF - Fridge Freezer | WM - Washing Machine | S - Store | HIU - Heat Interface Unit



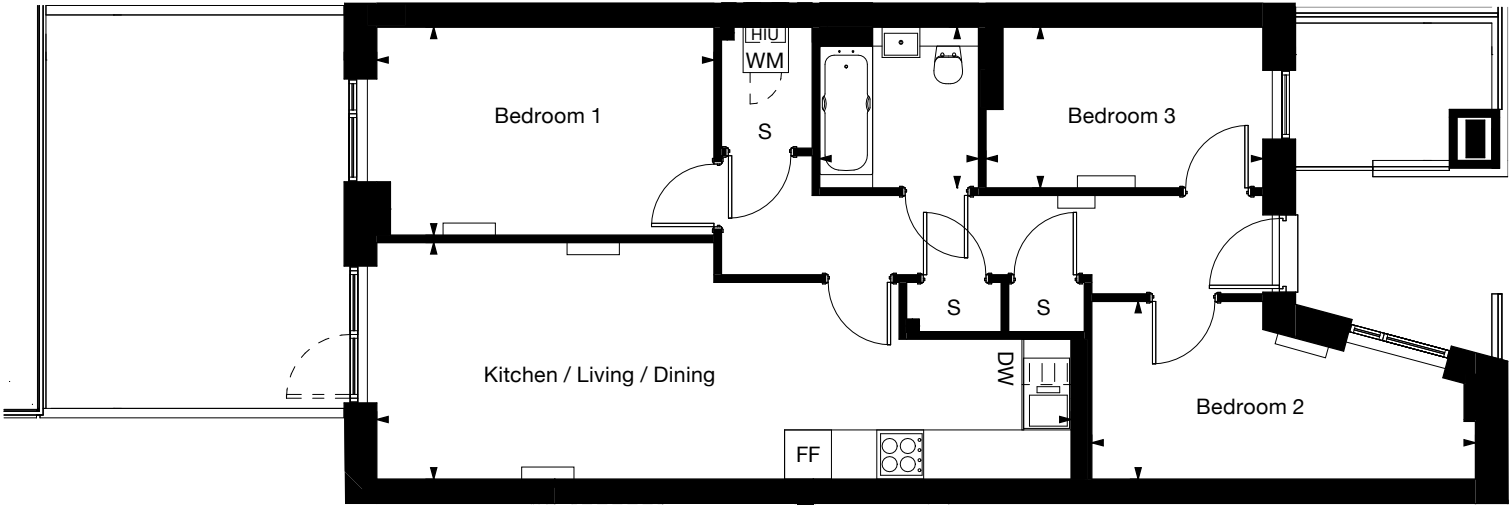
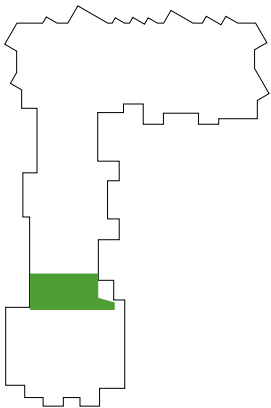
Plot 0.03

3 bedroom apartment

Private Entrance
Ground Floor

Kitchen / Living / Dining	9.1m x 3.1m	30'x10'
Bedroom 1	4.4m x 2.7m	15'x9'
Bedroom 2	5m x 2.3m	17'x8'
Bedroom 3	3.6m x 2.1m	12'x7'
GIA	74 sq m	802 sq ft

Key
DW - Dish Washer | FF - Fridge Freezer | WM - Washing Machine | S - Store | HIU - Heat Interface Unit



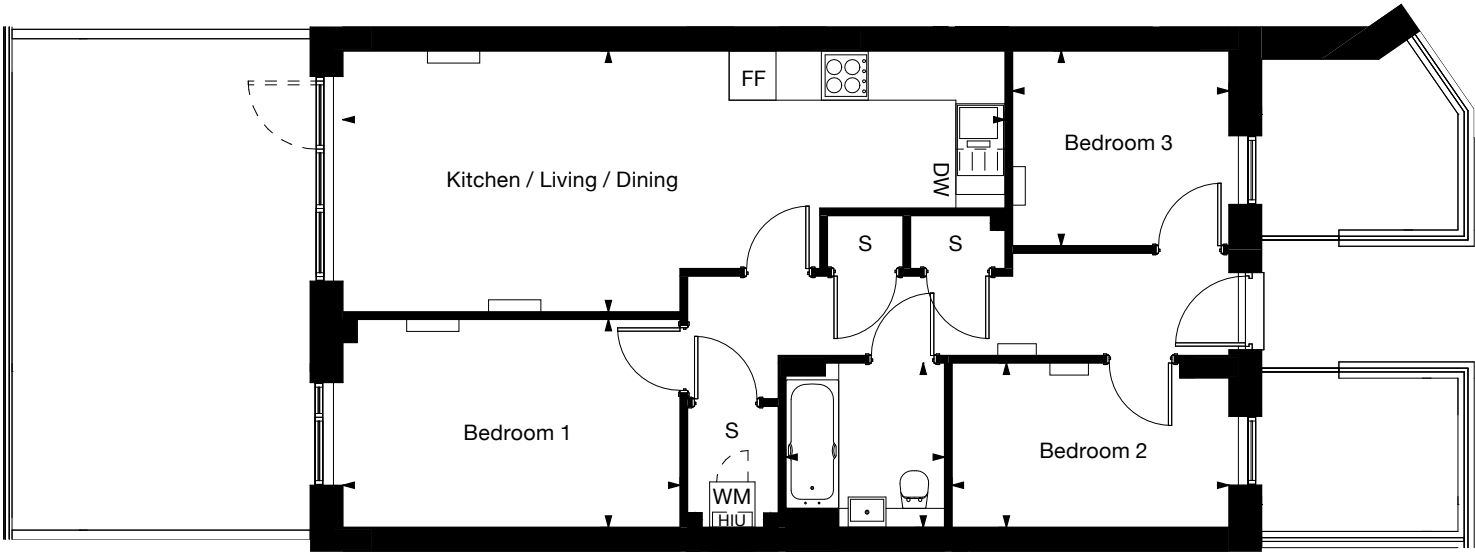
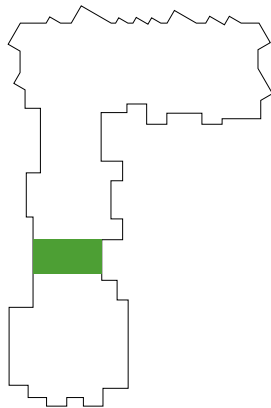
Plot 0.04

3 bedroom apartment

Private Entrance
Ground Floor

Kitchen / Living / Dining	8.7m x 3.4m	29' x 11'
Bedroom 1	4.4m x 2.7m	15' x 9'
Bedroom 2	3.6m x 2.1m	12' x 7'
Bedroom 3	2.8m x 2.5m	9' x 8'
GIA	74 sq m	796 sq ft

Key
DW - Dish Washer | FF - Fridge Freezer | WM - Washing Machine | S - Store | HIU - Heat Interface Unit



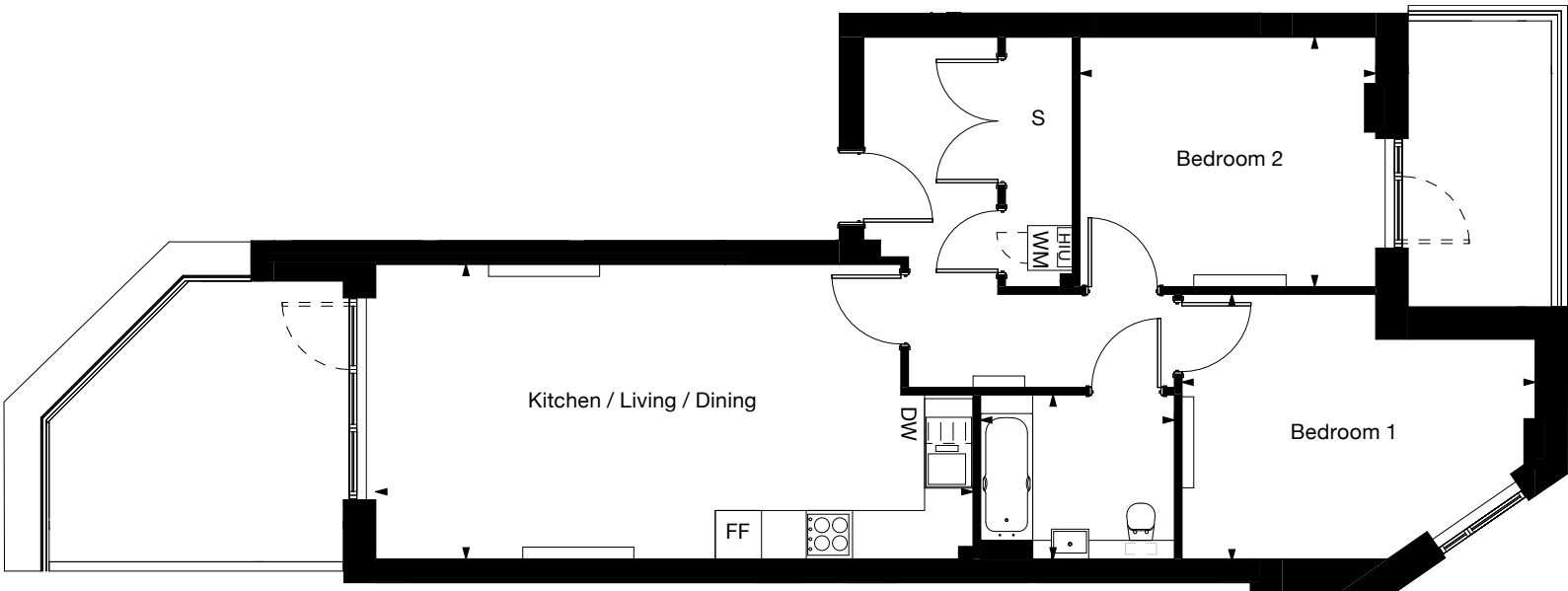
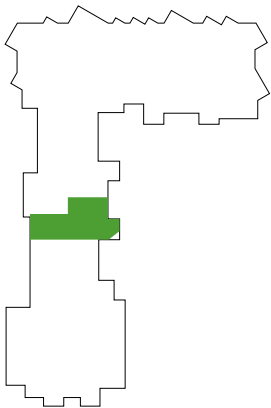
Plot 0.05

2 bedroom apartment

Core B
Ground Floor

Kitchen / Living / Dining	8m x 3.9m	26' x 13'
Bedroom 1	4.7m x 3.5m	16' x 12'
Bedroom 2	3.9m x 3.3m	13' x 11'
GIA	78 sq m	848 sq ft

Key
DW - Dish Washer | FF - Fridge Freezer | WM - Washing Machine | S - Store | HIU - Heat Interface Unit



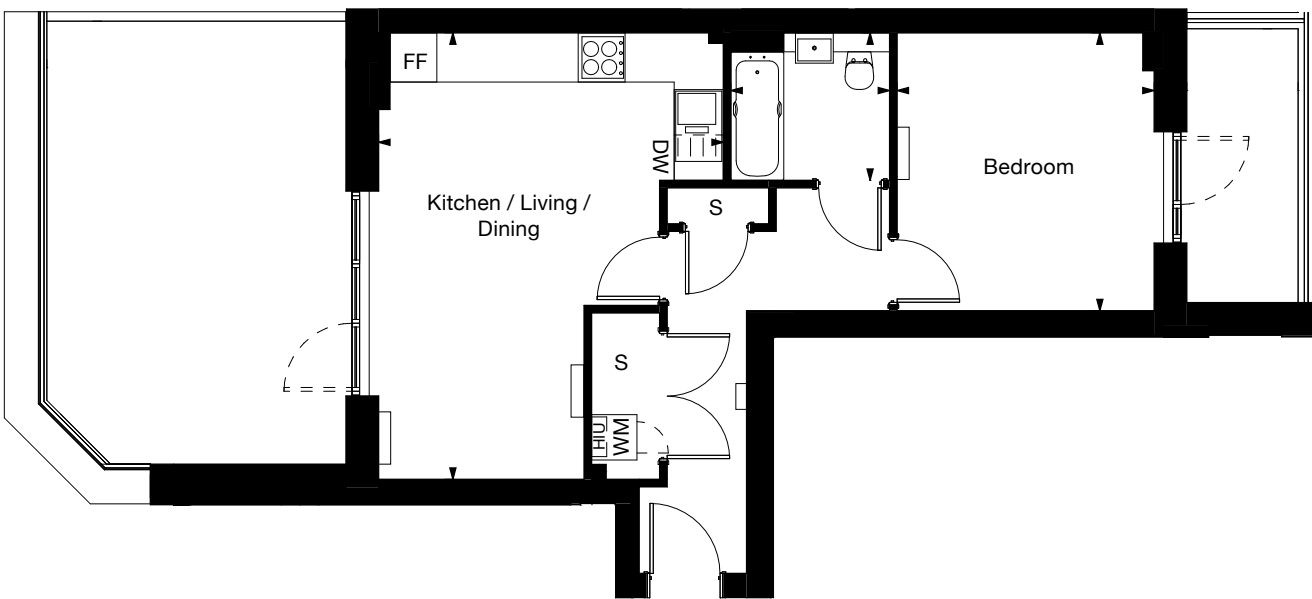
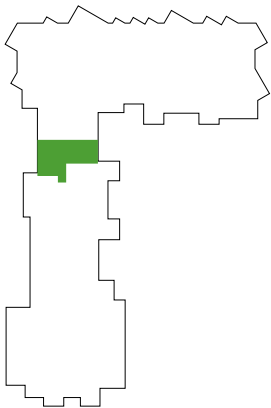
Plot 0.06

1 bedroom apartment

Core B
Ground Floor

Kitchen / Living / Dining	4.5m x 5.9m	15' x 19'
Bedroom	3.4m x 3.6m	11' x 12'
GIA	50 sq m	541 sq ft

Key
DW - Dish Washer | FF - Fridge Freezer | WM - Washing Machine | S - Store | HIU - Heat Interface Unit



Plot 0.07

2 bedroom apartment

Core C
Ground Floor

Kitchen / Living / Dining	4m x 5.9m	13' x 19'
Bedroom 1	3.9m x 2.9m	13' x 10'
Bedroom 2	4.1m x 2.9m	14' x 10'
GIA	70 sq m	757 sq ft

Key
DW - Dish Washer | FF - Fridge Freezer | WM - Washing Machine | S - Store | HIU - Heat Interface Unit



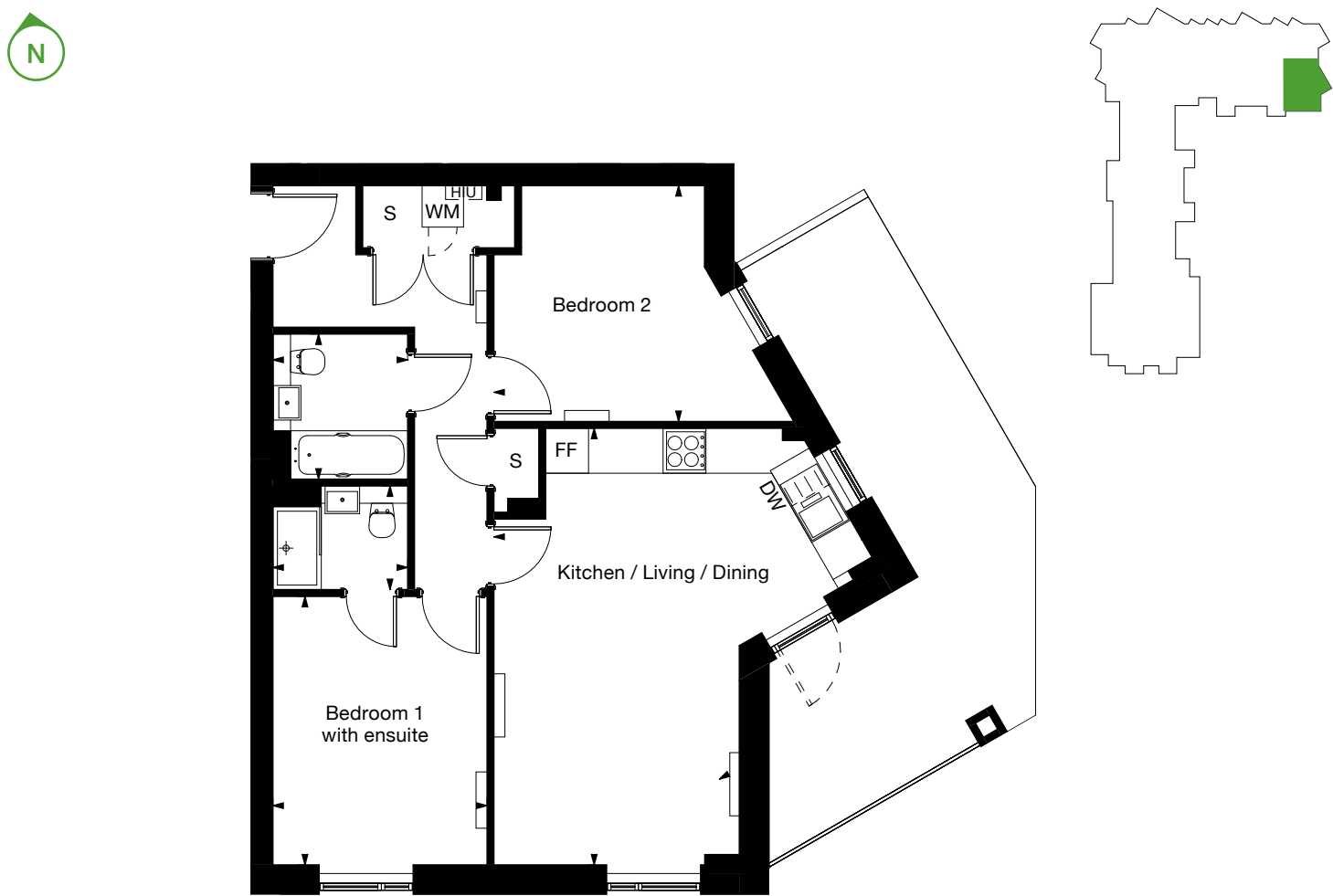
Plot 0.10

2 bedroom apartment

Core C
Ground Floor

Kitchen / Living / Dining	5.4m x 6.3m	18' x 21'
Bedroom 1	3.1m x 3.8m	10' x 13'
Bedroom 2	4.3m x 3.4m	14' x 11'
GIA	70 sq m	755 sq ft

Key
DW - Dish Washer | FF - Fridge Freezer | WM - Washing Machine | S - Store | HIU - Heat Interface Unit



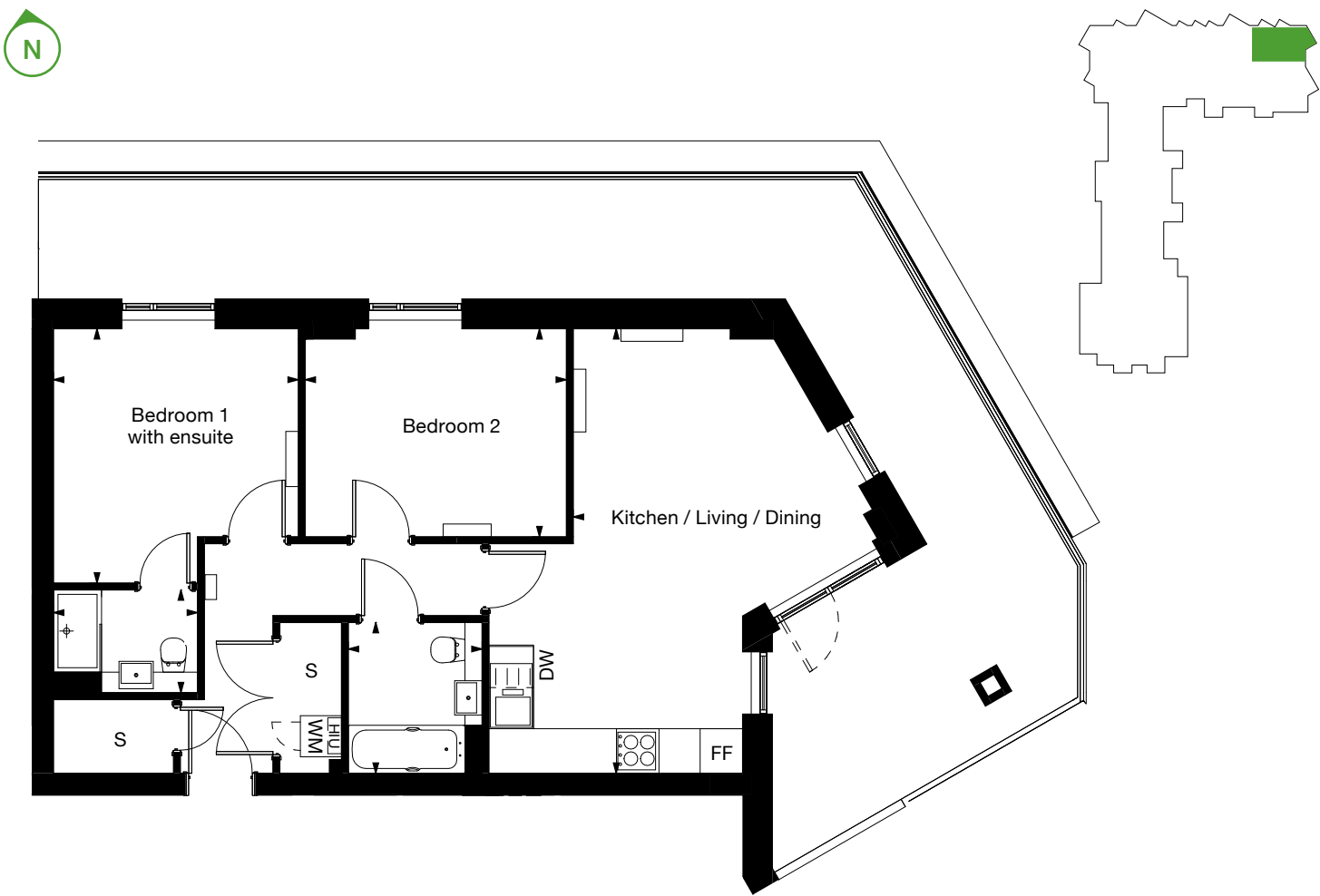
Plot 0.11

2 bedroom apartment

Core C
Ground Floor

Kitchen / Living / Dining	4.43x6.48m	15'x21'
Bedroom 1	3.57x3.71m	12'x12'
Bedroom 2	3.81x3.03m	13'x10'
GIA	70 sq m	754 sq ft

Key
DW - Dish Washer | FF - Fridge Freezer | WM - Washing Machine | S - Store | HIU - Heat Interface Unit



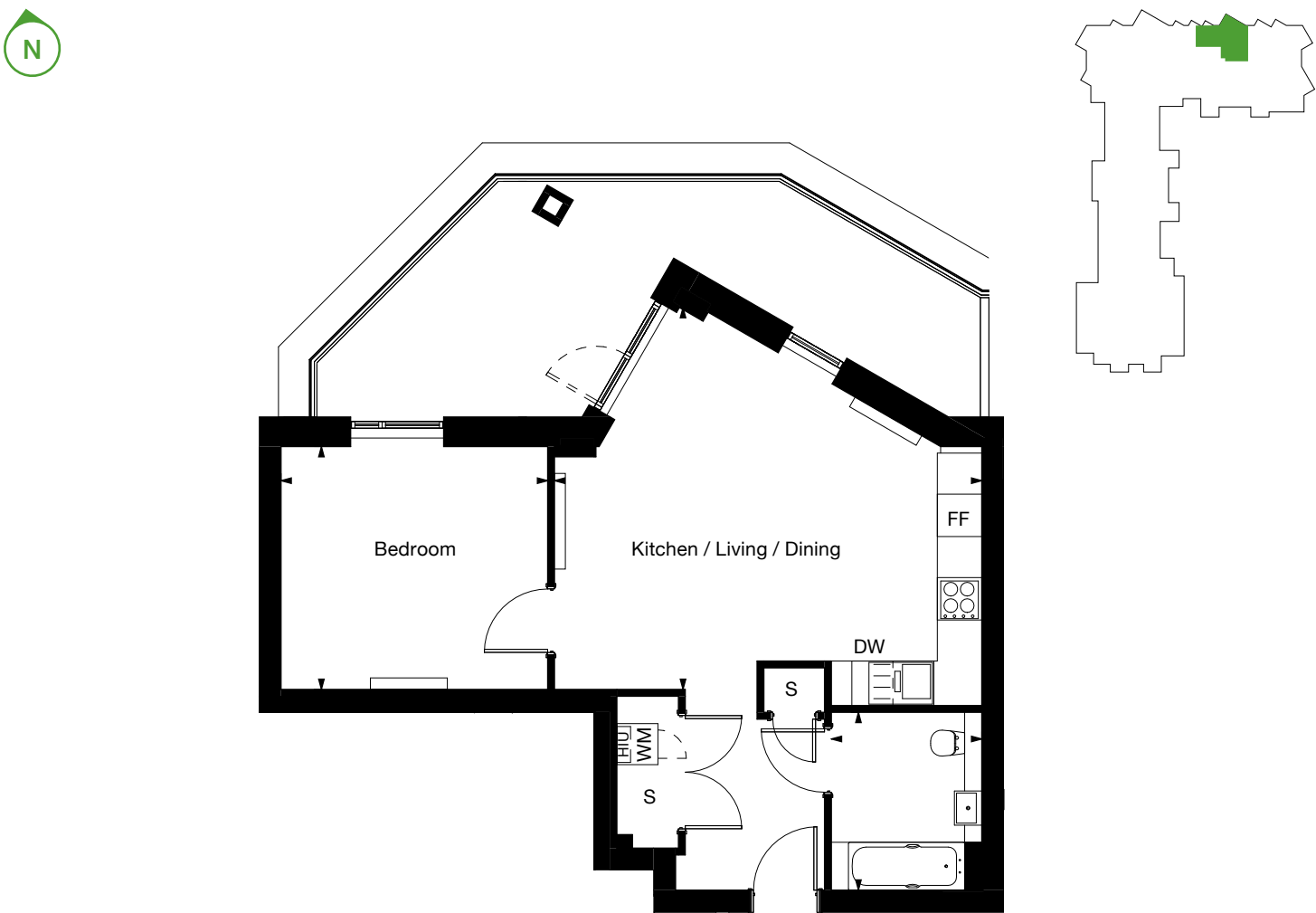
Plot 0.12

1 bedroom apartment

Core C
Ground Floor

Kitchen / Living / Dining	6.2m x 5.5m	21' x 18'
Bedroom	3.9m x 3.5m	13' x 12'
GIA	56 sq m	612 sq ft

Key
DW - Dish Washer | FF - Fridge Freezer | WM - Washing Machine | S - Store | HIU - Heat Interface Unit



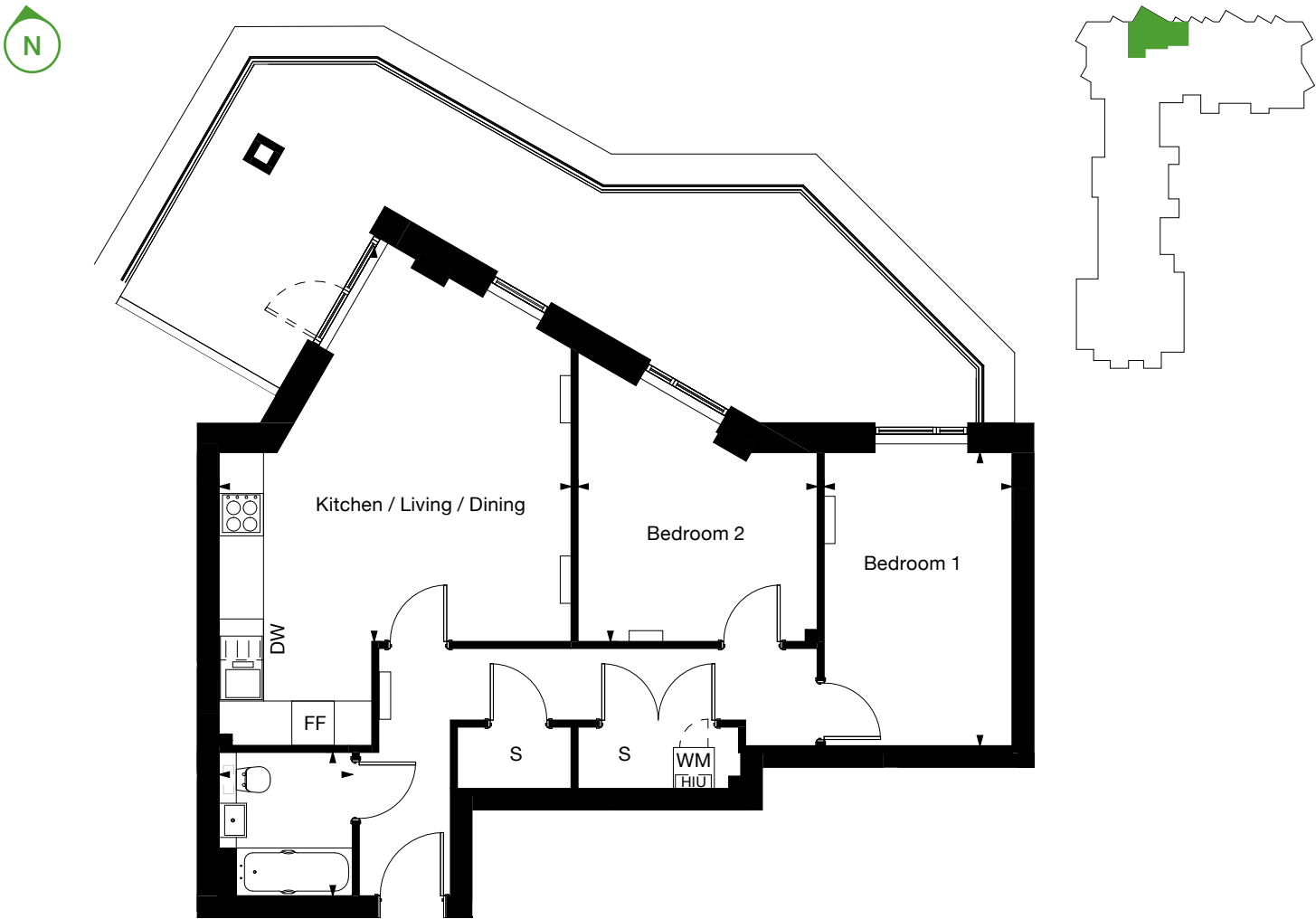
Plot 0.13

2 bedroom apartment

Core C
Ground Floor

Kitchen / Living / Dining	5.1m x 5.7m	17' x 19'
Bedroom 1	2.7m x 4.2m	9' x 14'
Bedroom 2	3.5m x 4.2m	11' x 14'
GIA	70 sq m	756 sq ft

Key
DW - Dish Washer | FF - Fridge Freezer | WM - Washing Machine | S - Store | HIU - Heat Interface Unit



Plot 0.14

2 bedroom apartment

Core C
Ground Floor

Kitchen / Living / Dining	6.2m x 4.8m	21' x 16'
Bedroom 1	3.4m x 3.7m	11' x 12'
Bedroom 2	3.6m x 3.1m	12' x 10'
GIA	70 sq m	755 sq ft

Key
DW - Dish Washer | FF - Fridge Freezer | WM - Washing Machine | S - Store | HIU - Heat Interface Unit



Plot 0.15

1 bedroom apartment

Core C
Ground Floor

Kitchen / Living / Dining	9.1m x 3.1m	30' x 10'
Bedroom	5.2m x 3m	17' x 10'
GIA	50 sq m	542 sq ft

Key
DW - Dish Washer | FF - Fridge Freezer | WM - Washing Machine | S - Store | HIU - Heat Interface Unit



Plot 5.04

3 bedroom apartment

Core B
5th Floor

Kitchen / Living / Dining	7.3m x 4.1m	24' x 14'
Bedroom 1	3.8m x 3.7m	13' x 12'
Bedroom 2	3.8m x 2.2m	13' x 7'
Bedroom 3	3.3m x 2.30m	11' x 8'
GIA	74 sq m	798 sq ft

Key
DW - Dish Washer | FF - Fridge Freezer | WM - Washing Machine | S - Store | HIU - Heat Interface Unit



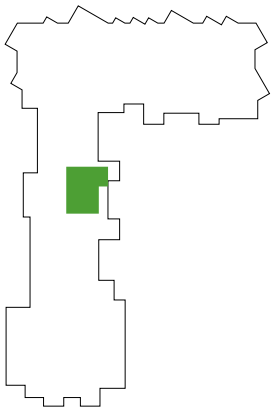
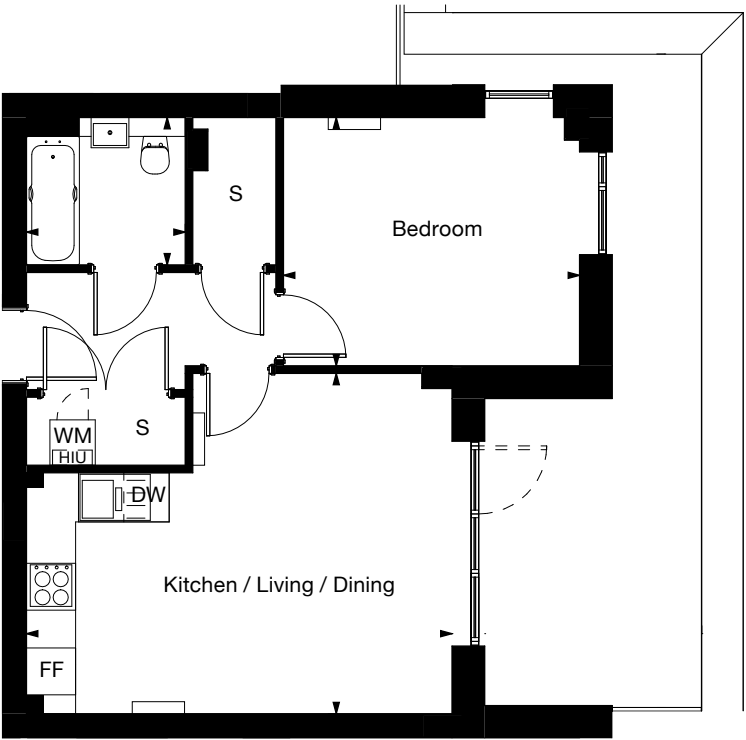
Plot 5.05

1 bedroom apartment

Core B
5th Floor

Kitchen / Living / Dining	5.6m x 4.5m	18' x 15'
Bedroom	3.9m x 3.2m	13' x 11'
GIA	50 sq m	537 sq ft

Key
DW - Dish Washer | FF - Fridge Freezer | WM - Washing Machine | S - Store | HIU - Heat Interface Unit



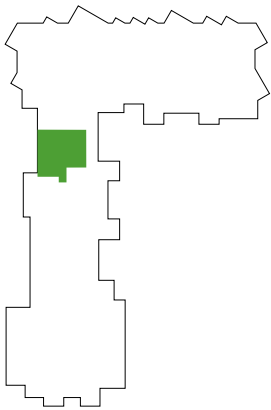
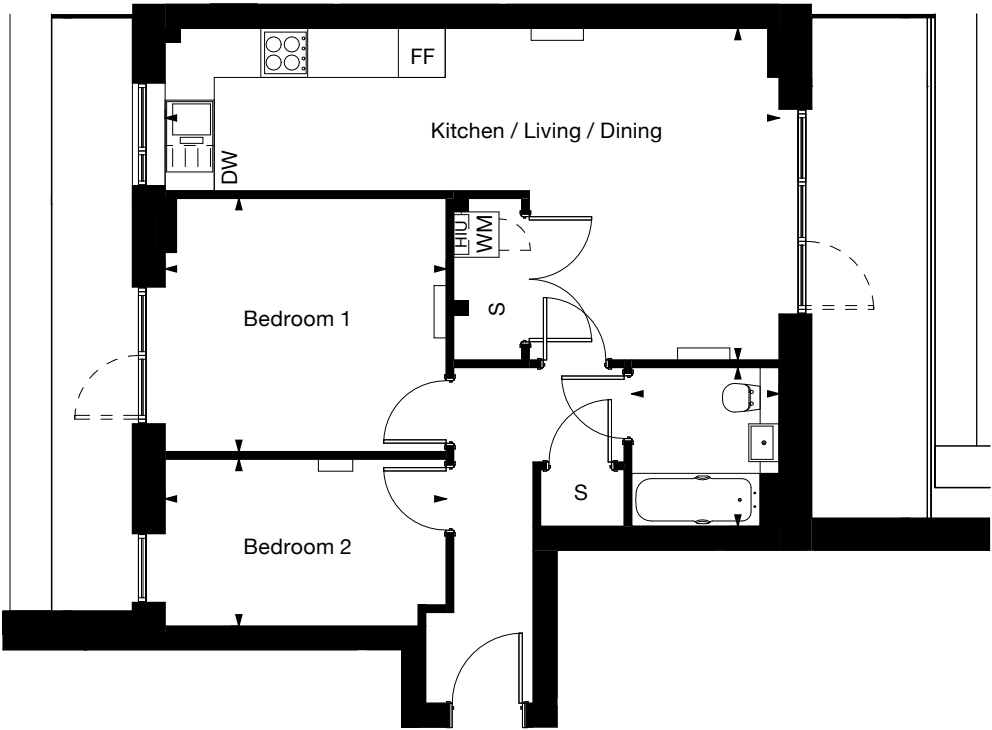
Plot 5.06

2 bedroom apartment

Core B
5th Floor

Kitchen / Living / Dining	8.1m x 4.3m	27' x 14'
Bedroom 1	3.7m x 3.3m	12' x 11'
Bedroom 2	3.7m x 2.2m	12' x 7'
GIA	61 sq m	660 sq ft

Key
DW - Dish Washer | FF - Fridge Freezer | WM - Washing Machine | S - Store | HIU - Heat Interface Unit



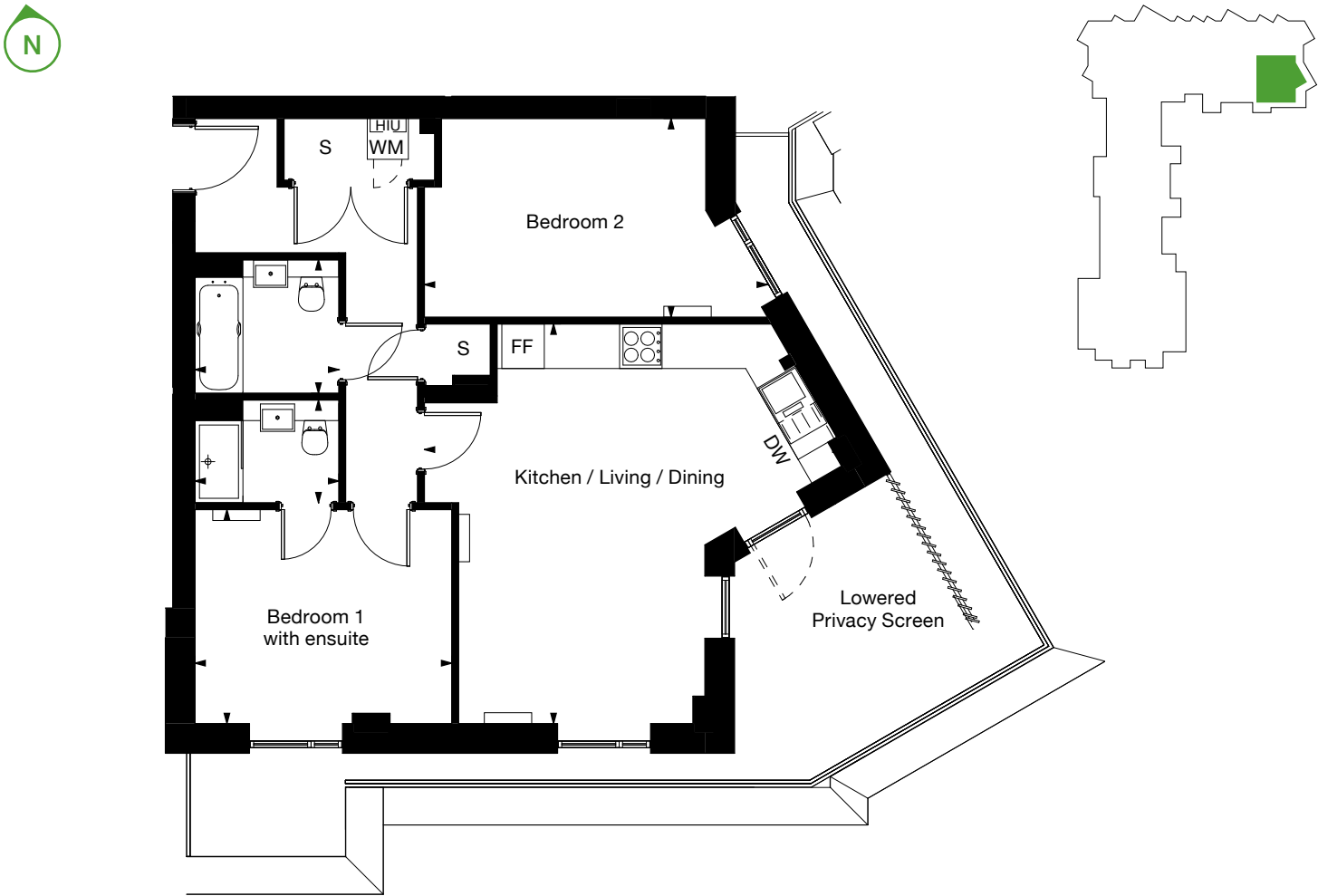
Plot 5.09

2 bedroom apartment

Core C
5th Floor

Kitchen / Living / Dining	6.1m x 5.8m	20' x 19'
Bedroom 1	3.7m x 3.1m	12' x 10'
Bedroom 2	5.1m x 2.9m	16' x 10'
GIA	71 sq m	764 sq ft

Key
DW - Dish Washer | FF - Fridge Freezer | WM - Washing Machine | S - Store | HIU - Heat Interface Unit



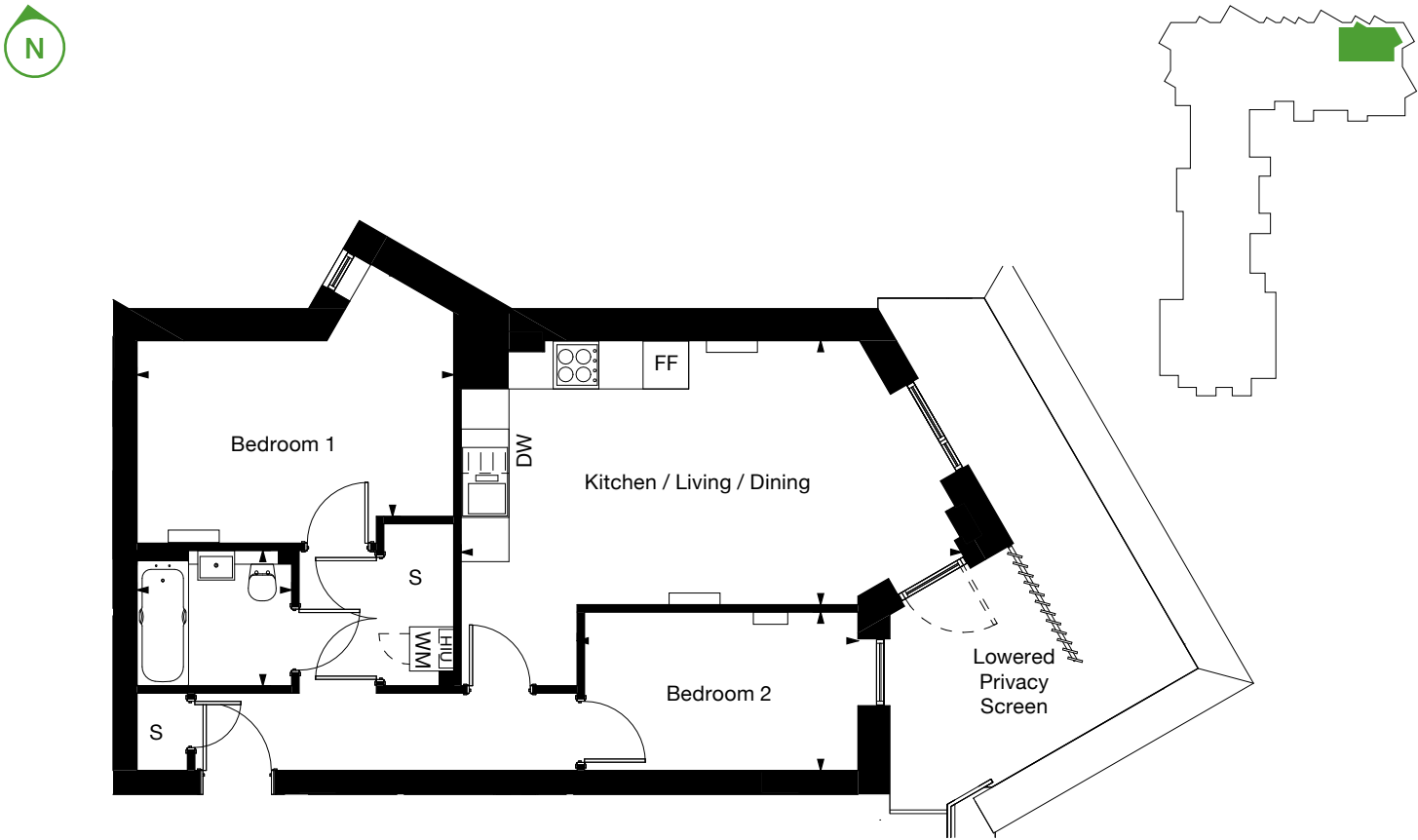
Plot 5.10

2 bedroom apartment

Core C
5th Floor

Kitchen / Living / Dining	6.7m x 3.5m	22' x 12'
Bedroom 1	4.3m x 3.4m	14' x 11'
Bedroom 2	3.8m x 2.1m	13' x 7'
GIA	61 sq m	656 sq ft

Key
DW - Dish Washer | FF - Fridge Freezer | WM - Washing Machine | S - Store | HIU - Heat Interface Unit



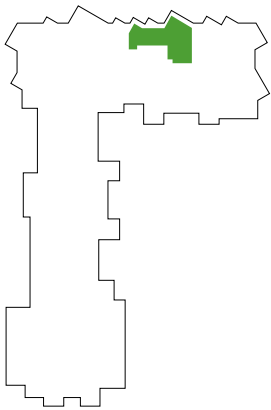
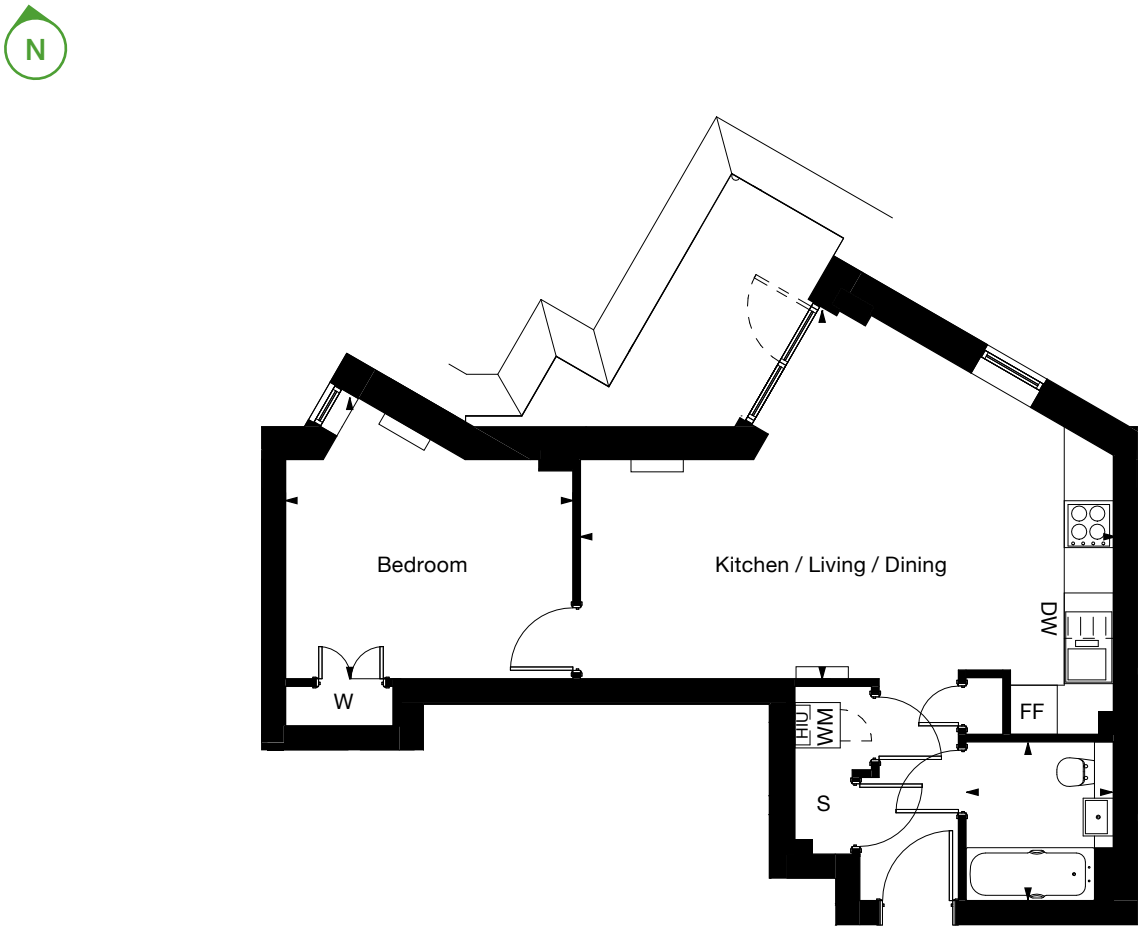
Plot 5.11

1 bedroom apartment

Core C
5th Floor

Kitchen / Living / Dining	7.07x4.86m	23'x16'
Bedroom	3.80x3.71m	12'x12'
GIA	50 sq m	542 sq ft

Key
DW - Dish Washer | FF - Fridge Freezer | WM - Washing Machine | S - Store | W - Wardrobe
HIU - Heat Interface Unit



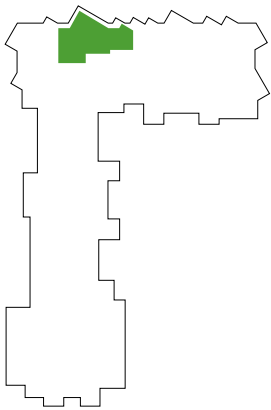
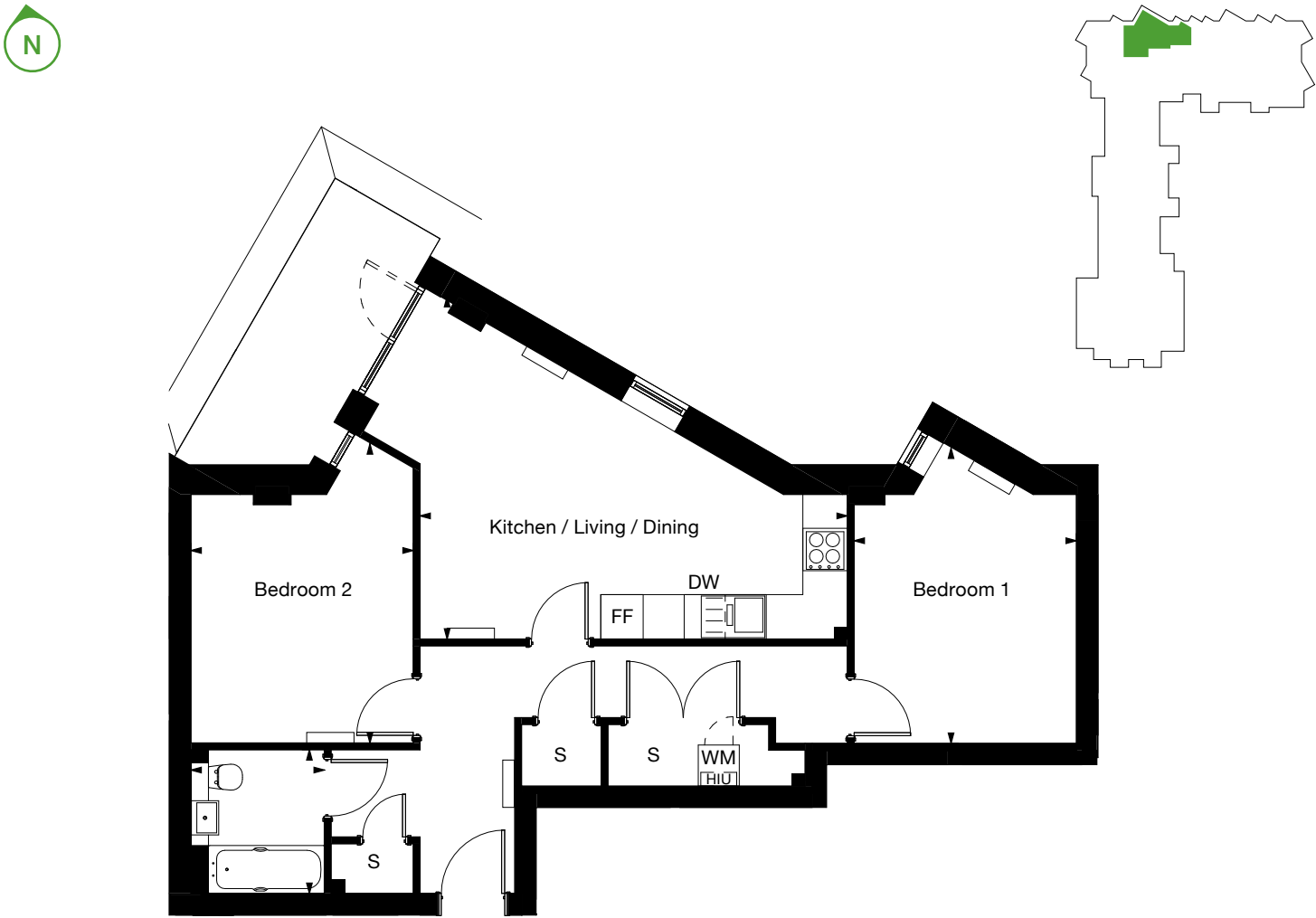
Plot 5.12

2 bedroom apartment

Core C
5th Floor

Kitchen / Living / Dining	6.2m x 5m	21' x 16'
Bedroom 1	3.2m x 4.3m	11' x 14'
Bedroom 2	3.2m x 4.4m	11' x 15'
GIA	70 sq m	759 sq ft

Key
DW - Dish Washer | FF - Fridge Freezer | WM - Washing Machine | S - Store | HIU - Heat Interface Unit



Plot 5.13

2 bedroom apartment

Core C
5th Floor

Kitchen / Living / Dining	7.2m x 4.6m	24' x 15'
Bedroom 1	5.4m x 2.7m	18' x 9'
Bedroom 2	3.4m x 4m	11' x 13'
GIA	70 sq m	757 sq ft

Key
DW - Dish Washer | FF - Fridge Freezer | WM - Washing Machine | S - Store | HIU - Heat Interface Unit

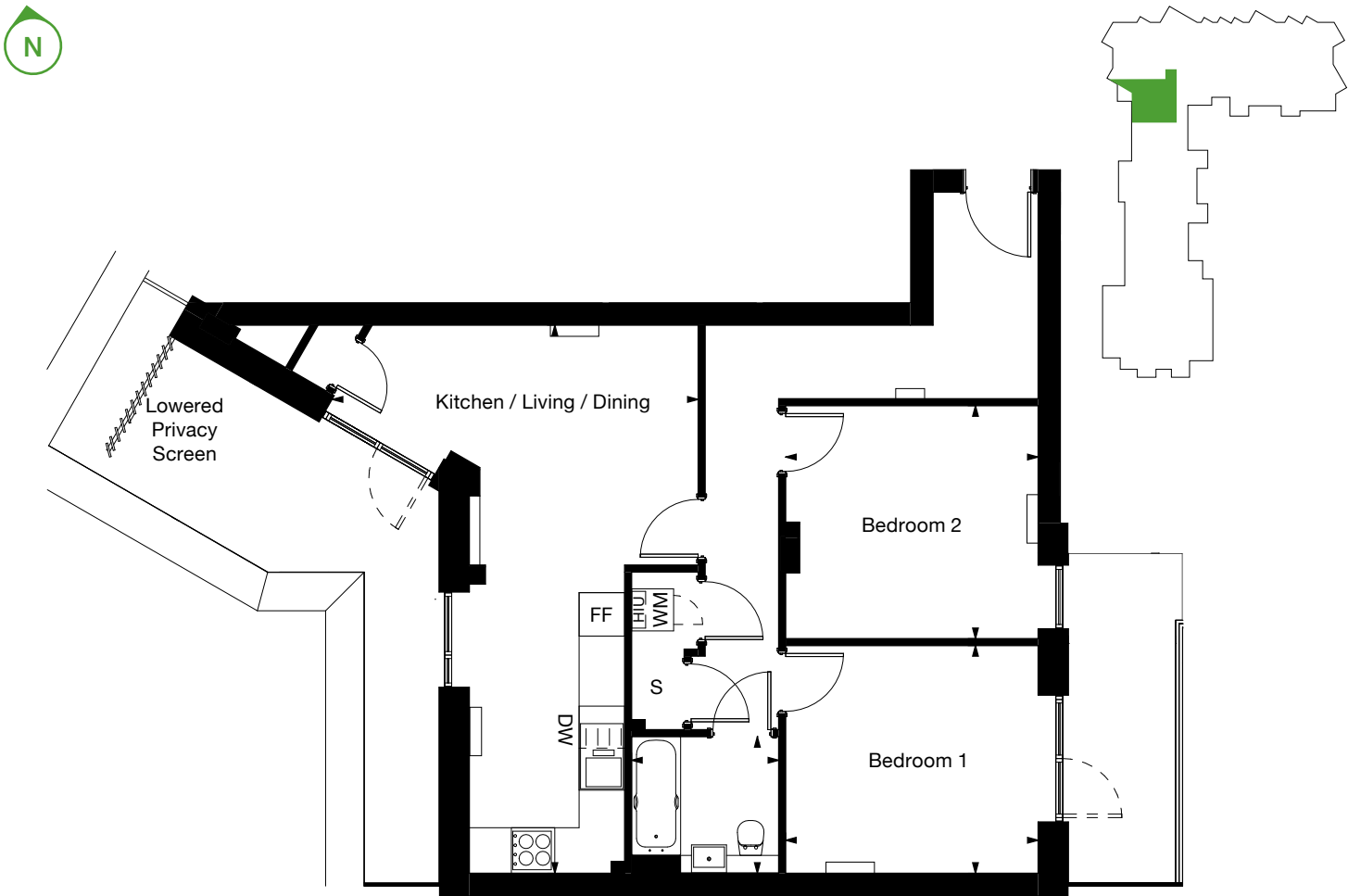
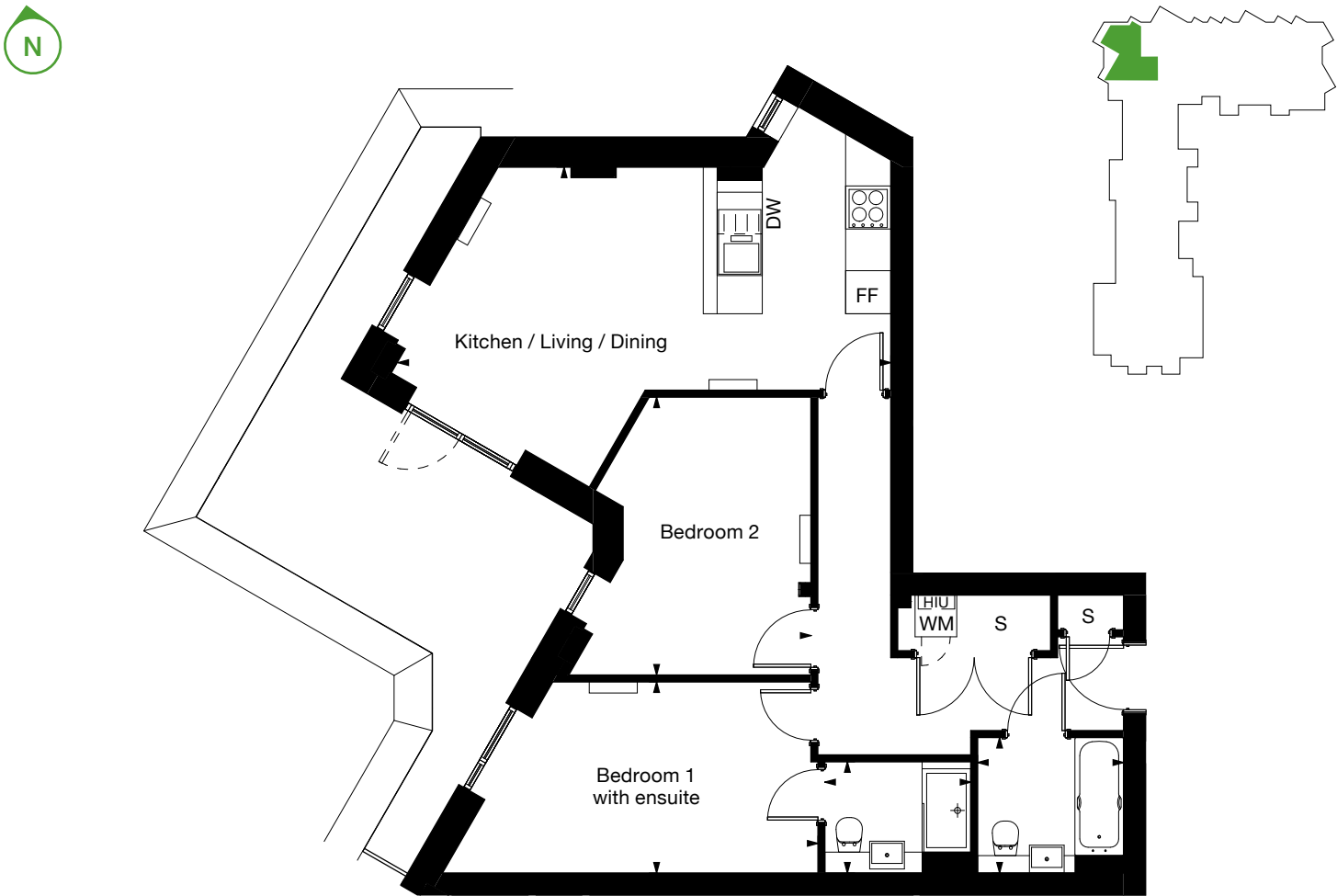
Plot 5.14

2 bedroom apartment

Core C
5th Floor

Kitchen / Living / Dining	5.2m x 7.8m	11'5" x 11'9"
Bedroom 1	3.6m x 3.2m	11'1" x 10'11"
Bedroom 2	3.6m x 3.3m	11'1" x 10'11"
GIA	70 sq m	756 sq ft

Key
DW - Dish Washer | FF - Fridge Freezer | WM - Washing Machine | S - Store | HIU - Heat Interface Unit



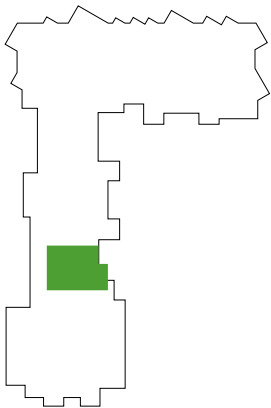
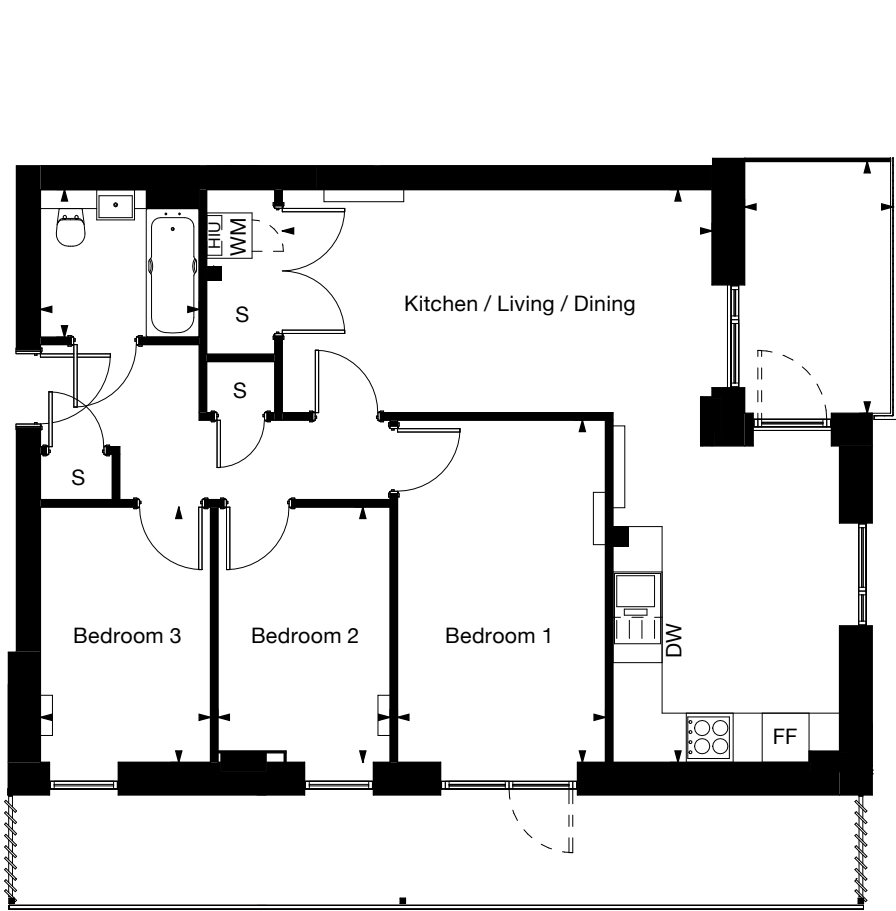
Plot 6.01

3 bedroom apartment

Core B
6th Floor

Kitchen / Living / Dining	5.6m x 7.5m	19' x 25'
Bedroom 1	2.7m x 4.5m	9' x 15'
Bedroom 2	2.2m x 3.3m	7' x 11'
Bedroom 3	2.2m x 3.3m	7' x 11'
GIA	74 sq m	800 sq ft

Key
DW - Dish Washer | FF - Fridge Freezer | WM - Washing Machine | S - Store | HIU - Heat Interface Unit



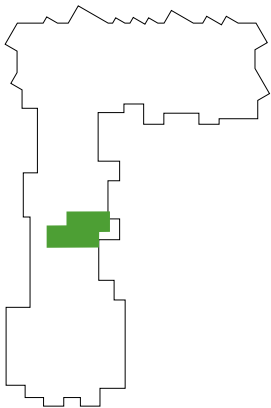
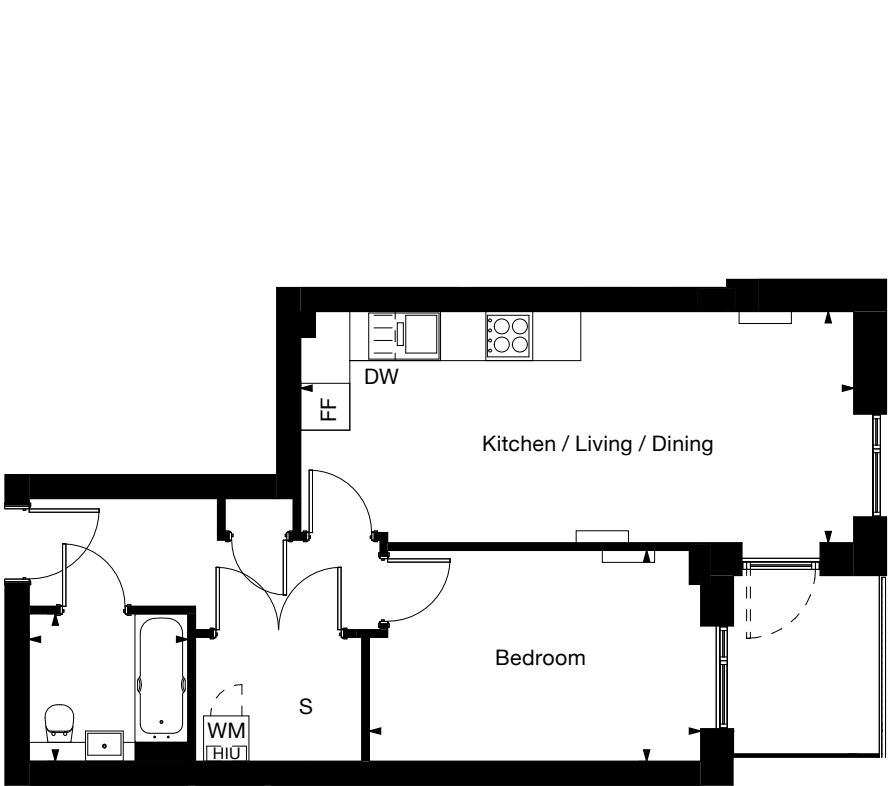
Plot 6.02

1 bedroom apartment

Core B
6th Floor

Kitchen / Living / Dining	7.3m x 3m	24' x 10'
Bedroom	4.3m x 2.7m	14' x 9'
GIA	50 sq m	540 sq ft

Key
DW - Dish Washer | FF - Fridge Freezer | WM - Washing Machine | S - Store | HIU - Heat Interface Unit



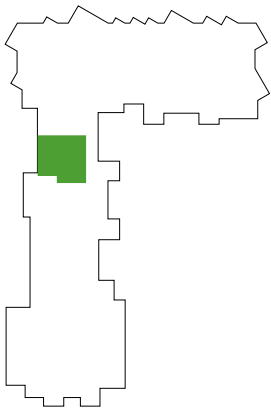
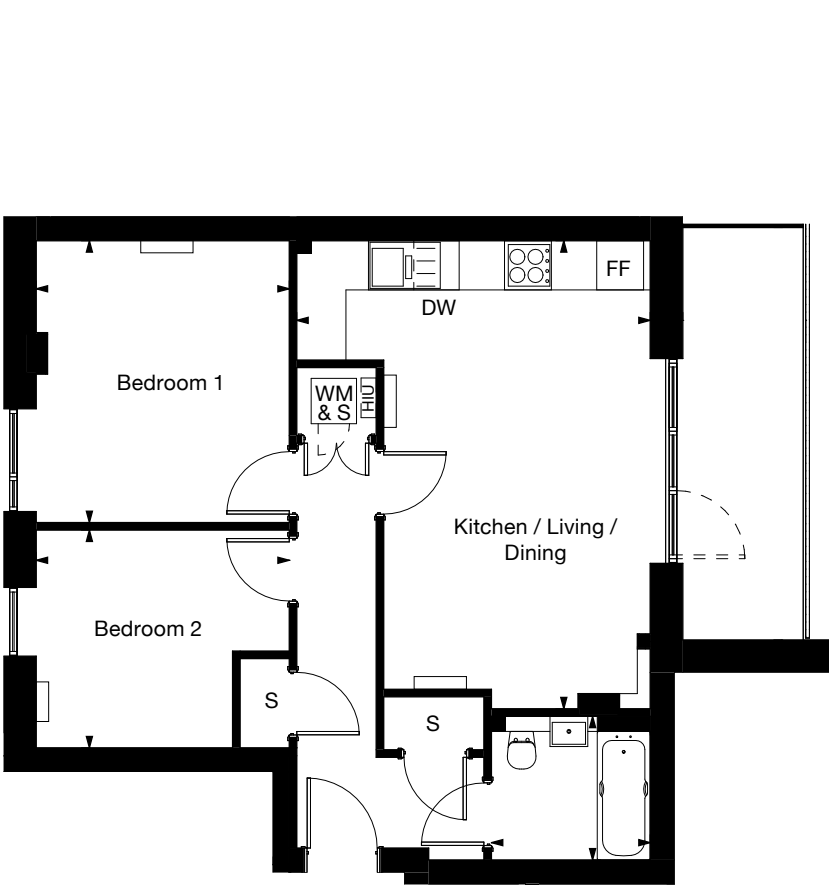
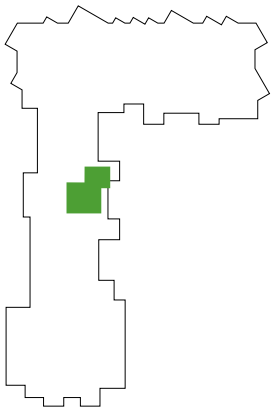
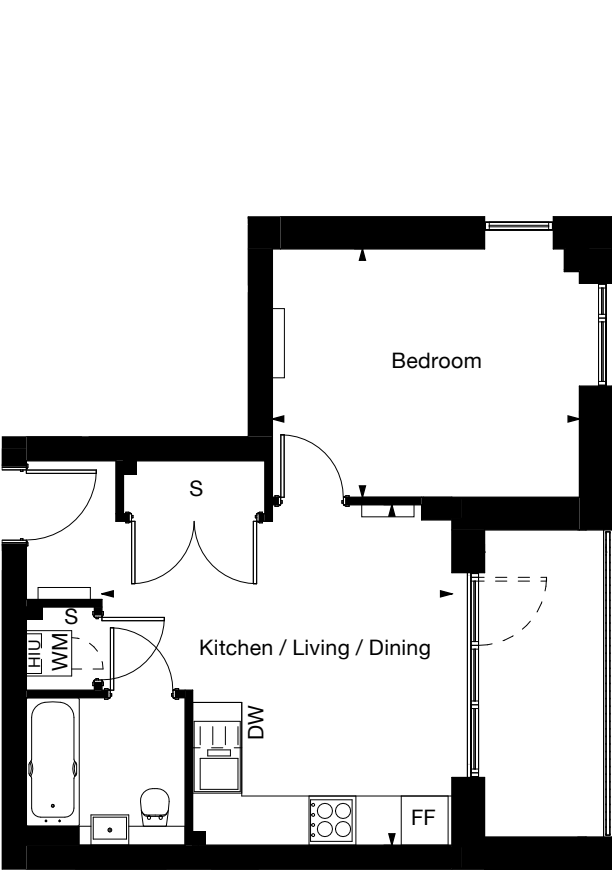
Plot 6.03

1 bedroom apartment

Core B
6th Floor

Kitchen / Living / Dining	4.6m x 4.5m	15' x 15'
Bedroom	4m x 3.2m	13' x 11'
GIA	40 sq m	439 sq ft

Key
DW - Dish Washer | FF - Fridge Freezer | WM - Washing Machine | S - Store | HIU - Heat Interface Unit



Plot 6.04

2 bedroom apartment

Core B
6th Floor

Kitchen / Living / Dining	6.1m x 5.8m	20' x 19'
Bedroom 1	3.7m x 3.1m	12' x 10'
Bedroom 2	5m x 3m	16' x 10'
GIA	61 sq m	658 sq ft

Key
DW - Dish Washer | FF - Fridge Freezer | WM - Washing Machine | S - Store | HIU - Heat Interface Unit

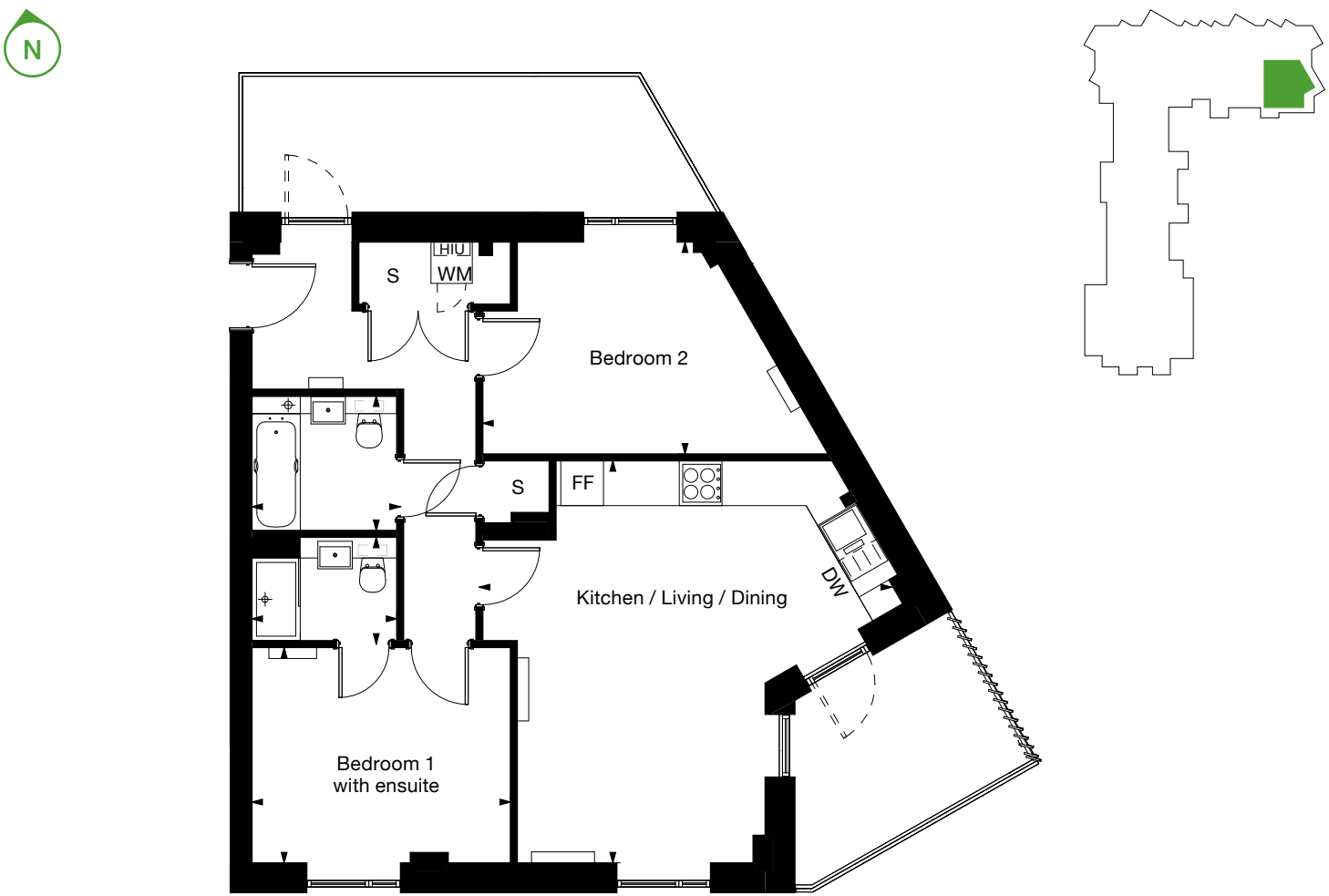
Plot 6.07

2 bedroom apartment

Core C
6th Floor

Kitchen / Living / Dining	6.1m x 5.8m	20' x 19'
Bedroom 1	3.7m x 3.1m	12' x 10'
Bedroom 2	5m x 3m	16' x 10'
GIA	71 sq m	771 sq ft

Key
DW - Dish Washer | FF - Fridge Freezer | WM - Washing Machine | S - Store | HIU - Heat Interface Unit



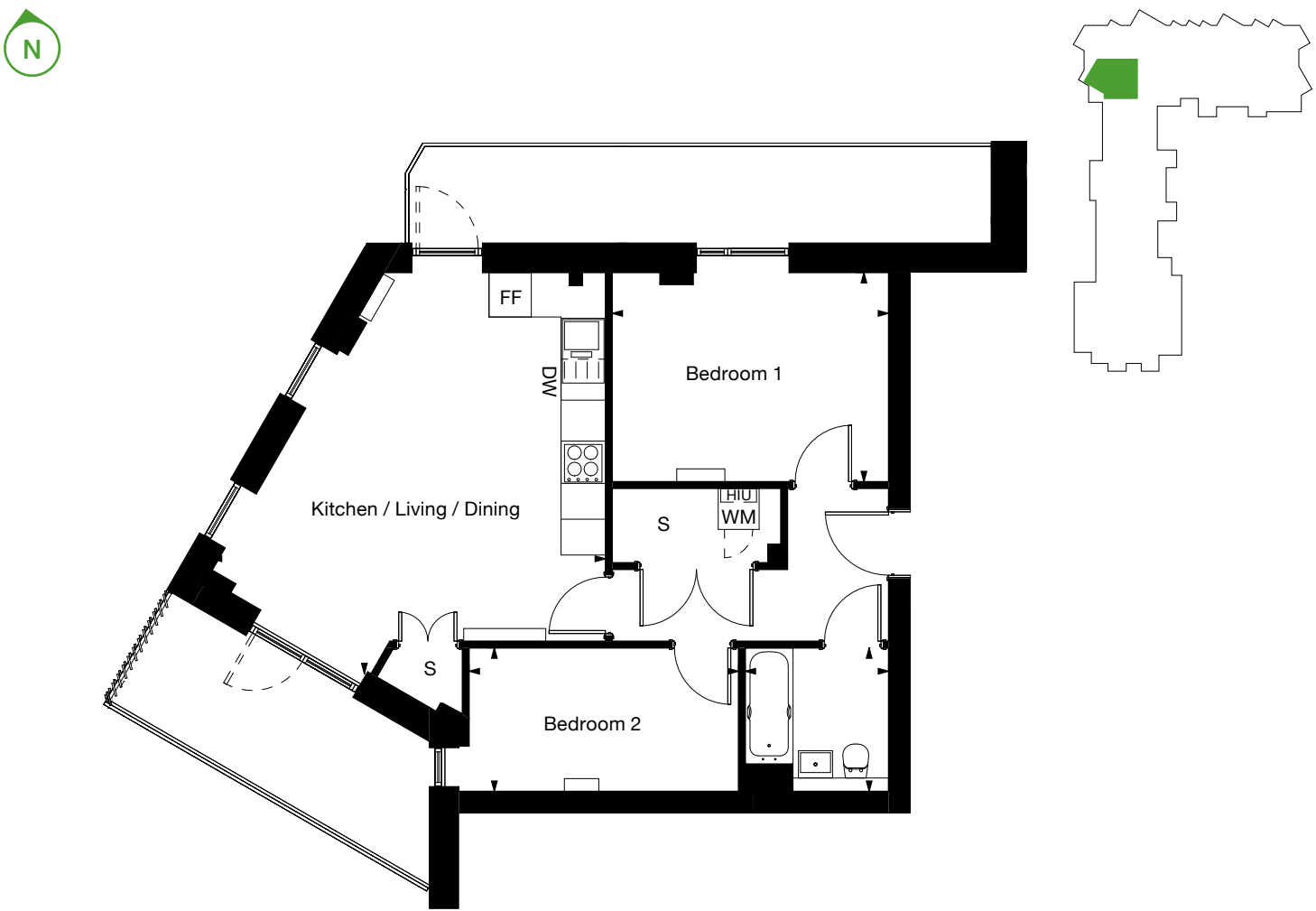
Plot 6.08

2 bedroom apartment

Core C
6th Floor

Kitchen / Living / Dining	5.7m x 5.8m	19' x 19'
Bedroom 1	4m x 3m	13' x 10'
Bedroom 2	3.9m x 2.1m	13' x 7'
GIA	62 sq m	673 sq ft

Key
DW - Dish Washer | FF - Fridge Freezer | WM - Washing Machine | S - Store | HIU - Heat Interface Unit



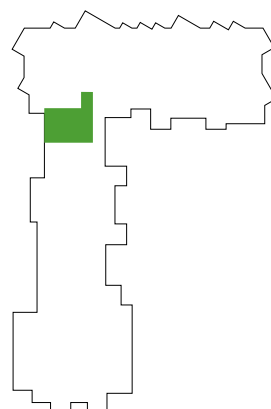
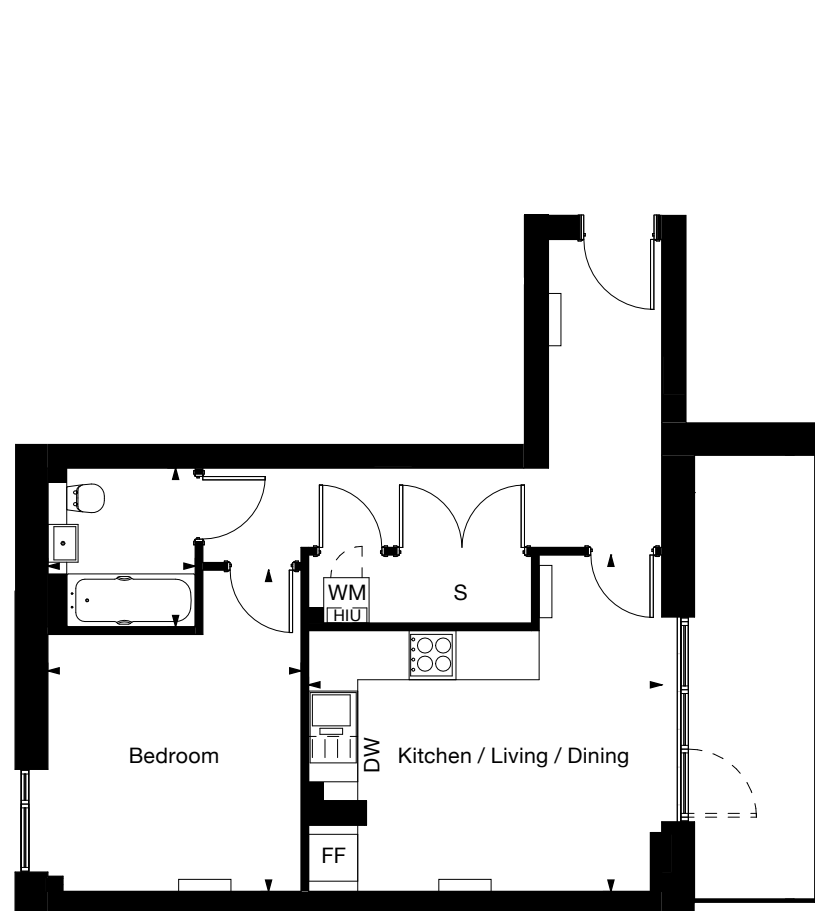
Plot 6.09

1 bedroom apartment

Core C
6th Floor

Kitchen / Living / Dining	4.6m x 4.4m	15' x 15'
Bedroom	3.3m x 4.2m	11' x 14'
GIA	50 sq m	538 sq ft

Key
DW - Dish Washer | FF - Fridge Freezer | WM - Washing Machine | S - Store | HIU - Heat Interface Unit



A simple step towards home ownership

With SO Flexi, you rent one of our new homes for much less than the market rate. That makes it easier for you to save up for a deposit. We'll help by setting savings goals before you move in, and then checking in and offering advice along the way to help you stay on track. When you've saved enough, you can simply buy the home you're already renting with SO Resi Shared Ownership. Or if you'd prefer, you can choose to buy a different SO Resi Shared Ownership home.

Here's how it works...

- Choose a great home at the exciting new SO Flexi Southall development, or find out about other SO Flexi homes in great locations at soflexi.co.uk
- Check you're eligible and apply online at soflexi.co.uk – our team are on hand to help.
- Live in your new home for at least three years, paying a lower-than-market rent to help you save. There are the other usual costs too, like household utility bills.
- Build up the deposit to buy your home with Shared Ownership. We'll help you work out how much you'll need, so you have a goal to work towards.
- When you're ready to buy your Shared Ownership home, the friendly SO Resi team will help you apply and guide you at every step.

MTVH has taken all reasonable care in the preparation of the information given in this brochure. However, this information is subject to change and has been prepared solely for the purpose of providing general guidance. MTVH does not warrant the accuracy or completeness of this information. Particulars are given for illustrative purposes only. MTVH undertakes continuous product development and any information given relating to our products may vary from time to time. The information and particulars set out within this brochure do not constitute part of a formal offer invitation or contract to acquire the relevant property. For the reasons mentioned above, no information contained in this brochure is to be relied upon. In particular, all plans prospectus, descriptions, dimensions and measurements are approximate and provided for guidance only. Such information is given without responsibility Such information is given without responsibility on the part of MTVH.