

FOR 1:20 BATHROOM LAYOUT, REFER TO DWG NO. EMAP32-93, FOR SETTING OUT INFORMATION

FOR 1:20 ENSUITE LAYOUT, REFER TO DWG NO. EMAP32-94, FOR SETTING OUT INFORMATION

BRICK/BLOCKWORK LEGEND (HOUSES)

EXTERNAL WALLS

102.5mm FACING BRICKWORK.

100mm BLOCKWORK - 3.6N/mm² AIRCRETE (600-800kg/m³, 0.15W/mk).

PARTY WALLS (E-WM-30)

3.6N/mm²(min) AIRCRETE (600-800kg/m³, 0.15W/mk), FOR E-WM-30 REFER TO ROBUST DETAILS FOR SPEC.

STUDWORK LEGEND

STUD PARTITION - 88MM OVERALL THICKNESS COMPRISING 63x38MM TIMBER STUD WITH 12.5MM PLASTERBOARD EITHER SIDE.

BUTTRESS STUD PARTITION - 125MM OVERALL THICKNESS X 1200MM OVERALL LENGTH COMPRISING 75x50MM TIMBER STUD WITH 12MM PLYWOOD EITHER SIDE & FINISHED WITH 12.5MM PLASTERBOARD (SEE STD DETAIL IW13-08-18).

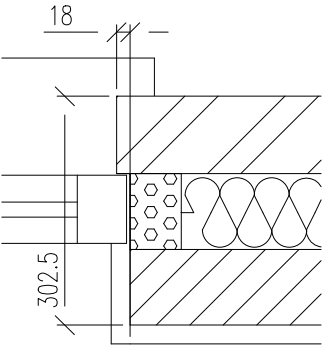
STUD PARTITION - 125MM OVERALL THICKNESS COMPRISING 100x50MM TIMBER STUD FINISHED WITH 12.5MM PLASTERBOARD (SEE STD DETAIL IW13-08-??). TO BE USED WHEN CONTINUING ON WITH BUTTRESS WALLS.

ACOUSTIC STUD PARTITION - (40 R_w dB MIN.) AS ABOVE DETAILS, BUT WITH 50mm KNAUF EARTHWOOL ACOUSTIC ROLL INSULATION (16kg/m³) BETWEEN STUDS.

REINFORCED STUD WALLS, TO SUPPORT GRAB RAILS, SEATS AND OTHER ADAPTATIONS THAT COULD IMPOSE A LOAD OF UP TO 1.5N/m². INSTALL 18mm THICK PLYWOOD BOARDS, BETWEEN STUDS.

GENERAL ARRANGEMENT DETAILS

Separating walls (E-WM-30)	EM-IW21-08-01
Windposts	EM-EW21-03-20/21/23/24/26
Timber stud partitions & buttress walls	EM-IW21-08-40/41/75/77
Pocket & internal doors	EM-DW21-13-50/55/57
Cavity closer & firestopping	EM-FP21-10-02
2 Storey straight flight stair fixing	EM-AD21-18-10
External doors & windows (check reveal)	EM-DW21-13-04/24



CHECK REVEAL DETAIL 1:10

NOTES:

- THIS DRAWING MUST NOT BE SCALED
- THIS DRAWING IS TO BE READ IN CONJUNCTION WITH ALL OTHER PROJECT DRAWINGS
- ALL DETAILS AND DRAWINGS MUST BE READ IN CONJUNCTION WITH THE TW NATIONAL CONSTRUCTION SPECIFICATION.

Taylor Wimpey Health, Safety & Environmental Information

Extracted from the Significant Risk Register of the Taylor Wimpey EMAP32 Product Risk Assessment Document

All works must be carried out by a competent contractor working to an agreed safe system of work which reflects the controls highlighted below.

2. Safe system of work identified in the TWUK Site HSE Manual. Control risk of fall when temporary boarding & joists or modular access system are removed from stairwell opening to install staircase by installing the Air tec system first [first floor], then removing the floor, joist or access system from below.

3. Safe system of work identified in the TWUK Site HSE Manual. Control risk of fall and manual handling operation when transferring plasterboard from one storey to another by using a plasterboard slot formed in the floor or other similar approved control measures.

10. Safe system of work identified in the TWUK Site HSE Manual. Control risk of fall when boarding and decorating stairwell walls and ceilings by using a safe means of access and a proprietary fall protection system.

11. Control risk of fall and manual handling operation when transferring external windows from one storey to another ensuring a safe means of access is identified and weights are clearly marked.

C1	NOV 23	CONSTRUCTION ISSUE.	ER	AKC
T3	FEB 23	TILING TO BATH UPDATED.	ER	AKC
T2	NOV 22	STUD WALLS UPDATED TO TIMBER	ER	AKC
T1	SEP 22	ISSUED FOR TENDER	AKC	TM
A	JUN 22	RWP'S RELOCATED TO PARTY WALL. CDM NOTE 2 REVISED. HT_VERSION FIELDS ADDED TO RELEVANT SHEETS. DETAIL REFERENCES CHANGED TO SUIT NEW DETAILS AND REGULATIONS.	ABA	ABA
REV	DATE	DESCRIPTION OF REVISION	DRAWN	CHECKED

ADM Compliance Level:

M4(2)

NDSS Compliance:

COMPLIANT

Taylor Wimpey

Drg No:

EMAP32 2020 / 22 A

Title:

EMAP32

CHILTON WOODS PH 2, SUDBURY

(3B5P)

GA FIRST FLOOR

Bu no: Site no: House type no: Drg no: Ver:

TWEL/ 21646 /EMAP32 22 /C1

AS PLOT/S:

221,223,238,308,321,323

OPP PLOT/S:

220,222,237,309,322,324

Scale: 1: 50 @ A3

Date: 2020

Drawn By: ABA

Checked By: ABA

Taylor Wimpey UK Ltd

Gate House, Turnpike Road,
High Wycombe, Bucks HP12 3NR
Tel 01494 558323 Fax 01494 885663
www.taylorwimpey.com