



Persona Homes

by Home Group

CORINTHIAN PLACE

BURNHAM-ON-CROUCH

HARRIER

2-bedroom home

This home is the perfect blend of comfort, functionality, and contemporary design – ideal for families, couples, or anyone looking for a space that adapts to their lifestyle.



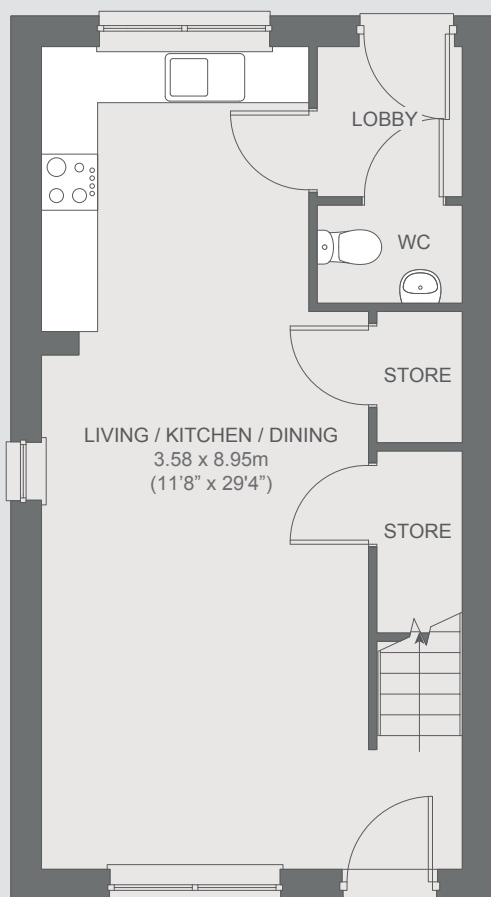
Contact us:

T: 0800 030 8888

E: contactus@yourpersonahome.com

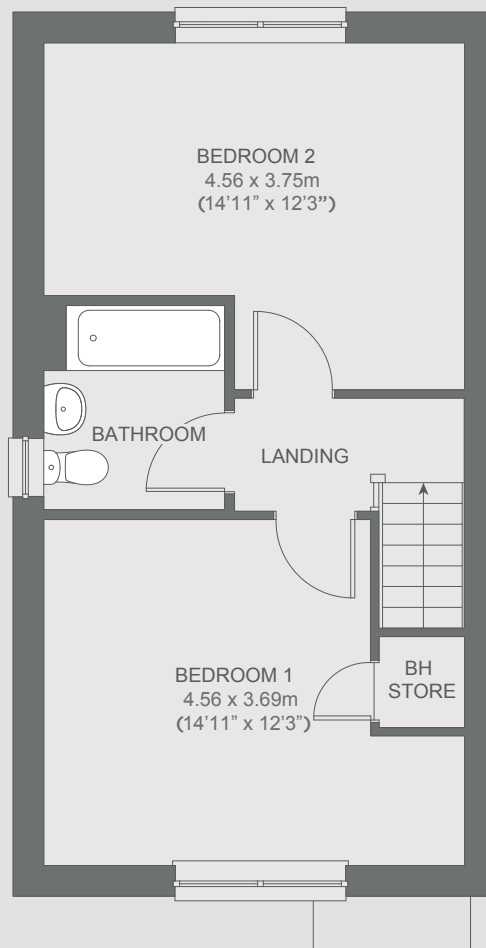
W: yourpersonahome.com

Endeavour Way, Burnham-on-Crouch, Essex, CM0 8NS



Ground floor

Living/kitchen/dining room 3.58m x 8.95m



First floor

Bedroom 1 4.56m x 3.69m

Bedroom 2 4.56m x 3.75m

Total area 80.45m²



Any floor plans are a general outline of the layout of the property for guidance only. All measurements are approximate and may vary and any intending purchasers should not rely on them as statements of fact or representations of fact but must satisfy themselves by inspection or otherwise as to their accuracy. Dimensions shown are not intended to be relied upon for installation of appliances or items of furniture or otherwise. CGI's and images are for illustrative purposes only. Specifications are subject to change. Images are indicative only and may be of previous developments.*Journey times and distances taken from google.com/ maps and are correct before going to print. All times and distances listed are approximate and may vary depending on time of travel.