



Flat 1, 46 Beeching Way

Wallingford, OX10 0TG

40% Shared Ownership £78,000

Charming One-Bedroom Ground Floor Flat with Garden in the Heart of Wallingford

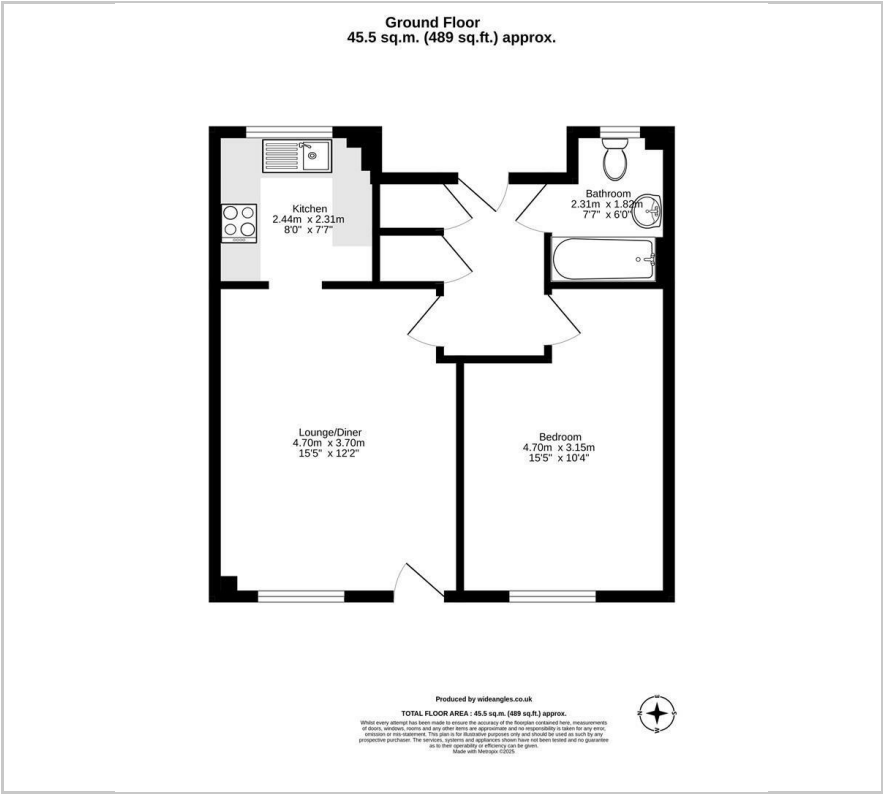
Discover this delightful one-bedroom ground floor flat nestled in a quiet close in the picturesque market town of Wallingford. This property offers a comfortable and convenient layout with the added addition of direct access to outside garden space.

Situated within walking distance of Wallingford's historic town centre, this apartment offers excellent access to local amenities including shops, cafes, restaurants, and the River Thames.

- Full market price £195,000
- Rent £372.22 pcm approximately
- Service charge £86.53 pcm approximately
- Sinking fund £39.30 pcm approximately
- Spacious ground floor apartment
- Direct access to its own garden space
- Light & bright living area
- Shaker style kitchen
- Gas central heating
- Allocated parking space



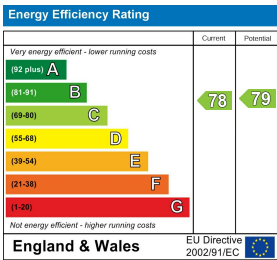
Floor Plan



Area Map



Energy Efficiency Graph



These particulars, whilst believed to be accurate are set out as a general outline only for guidance and do not constitute any part of an offer or contract. Intending purchasers should not rely on them as statements of representation of fact, but must satisfy themselves by inspection or otherwise as to their accuracy. No person in this firm's employment has the authority to make or give any representation or warranty in respect of the property.