

Prices
from
£68,125

Bishops Green

GUARDSMAN COURT, MCDOWELL STREET, BISHOPS STORTFORD, HERTFORDSHIRE

A brand-new development of 1 & 2 bed apartments

//// ParadigmLiving

£ Prices from **£68,125 (25% share)**

% Share available **25%-75%**

🛏 1 & 2 bed apartments



Paradigm are pleased to present 9 new build homes available to purchase through the Shared Ownership Scheme. The properties consist of 1 & 2 bed apartments surrounded by picturesque countryside. The properties are only a short drive to the popular market town of Bishops Stortford equipped with a fantastic range of shops, supermarkets, pubs and restaurants, & providing a direct rail link into London in under an hour.



KEY FEATURES

White bathroom suite with thermostatic shower

Carpet throughout living areas

Vinyl flooring in kitchen & bathroom

Gas central heating

Allocated parking

Fitted kitchen with integrated oven and hob, washer dryer & fridge freezer

These particulars do not constitute any part of an offer or contract. Any intended purchasers must satisfy themselves as to the correctness of each of the statements contained in these particulars. All floor layouts may be subject to changes. The dimensions given on the plan are subject to minor variations intended for guidance only and are not to be used for carpets, appliances or items of furniture.

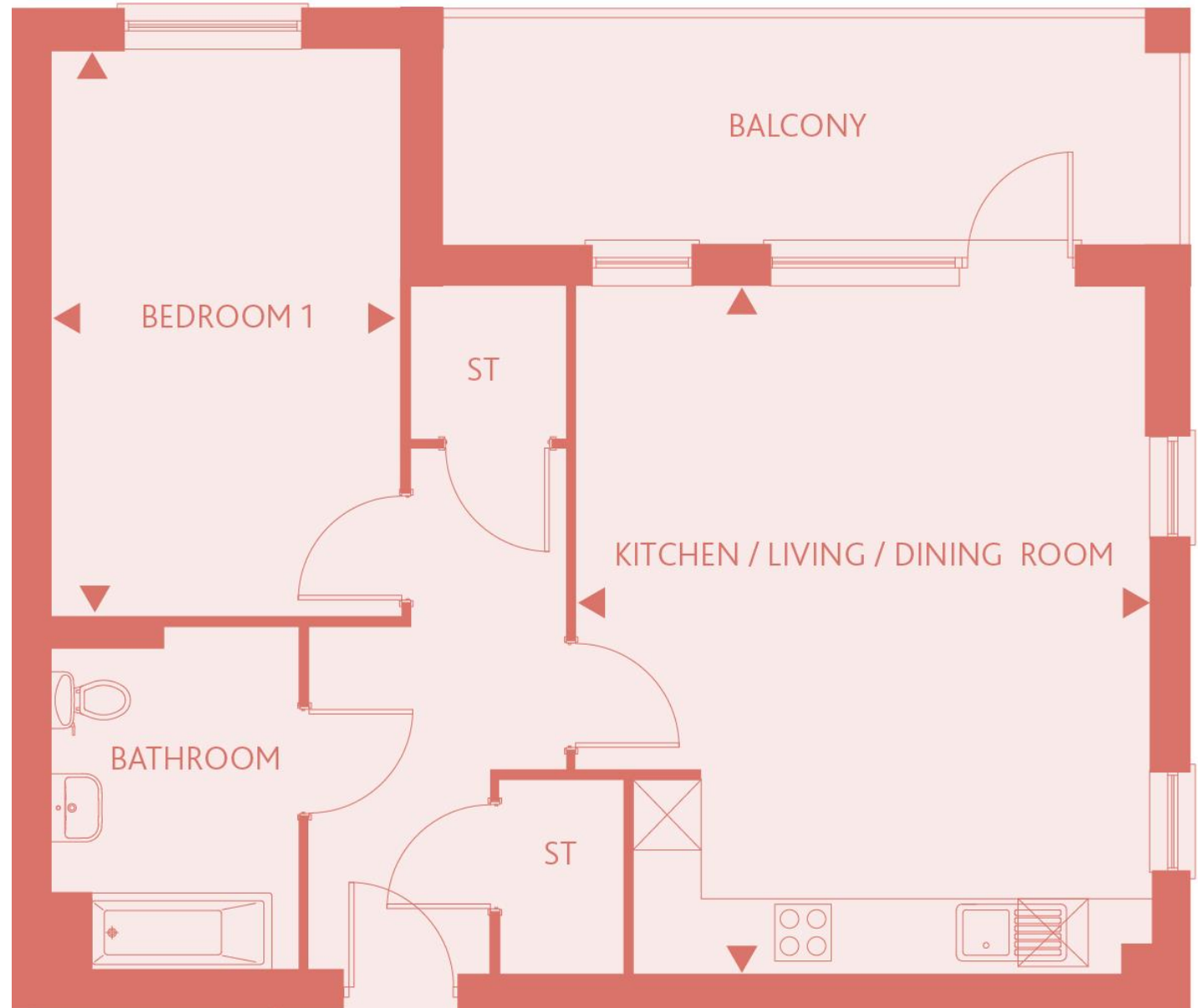


1 Bedroom Apartment

Plots 73, 76 & 79

KITCHEN/LIVING/DINING ROOM
20'0" x 16'8" 6.10m x 5.10m

BEDROOM 1
16'6" x 10'3" 5.05m x 3.14m



These particulars do not constitute any part of an offer or contract. Any intended purchasers must satisfy themselves as to the correctness of each of the statements contained in these particulars. All floor layouts maybe subject to changes. The dimensions given on the plan are subject to minor variations intended for guidance only and are not be used for carpets, appliances or items of furniture.





1 Bedroom Apartment

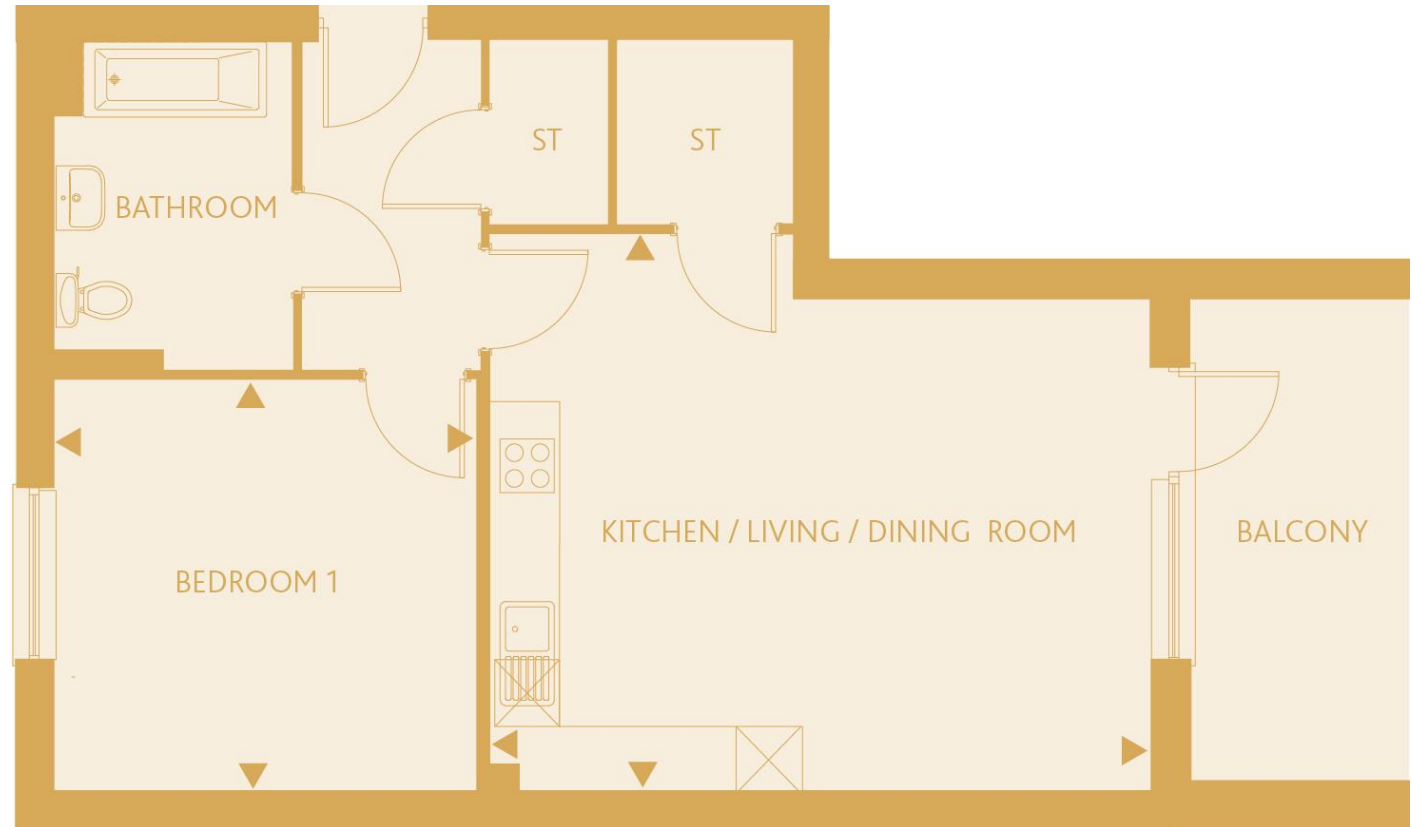
Plots 74, 77 & 80

KITCHEN/LIVING ROOM

17'1" x 20'3" 5.21m x 6.18m

BEDROOM 1

12'7" x 12'11" 3.86m x 3.94m



*Note: The boiler is in the bathroom for Plot 74, all remaining plots are in the kitchen

These particulars do not constitute any part of an offer or contract. Any intended purchasers must satisfy themselves as to the correctness of each of the statements contained in these particulars. All floor layouts may be subject to changes. The dimensions given on the plan are subject to minor variations intended for guidance only and are not be used for carpets, appliances or items of furniture.





2 Bedroom Apartment

Plots 72, 75 & 78

KITCHEN/LIVING ROOM

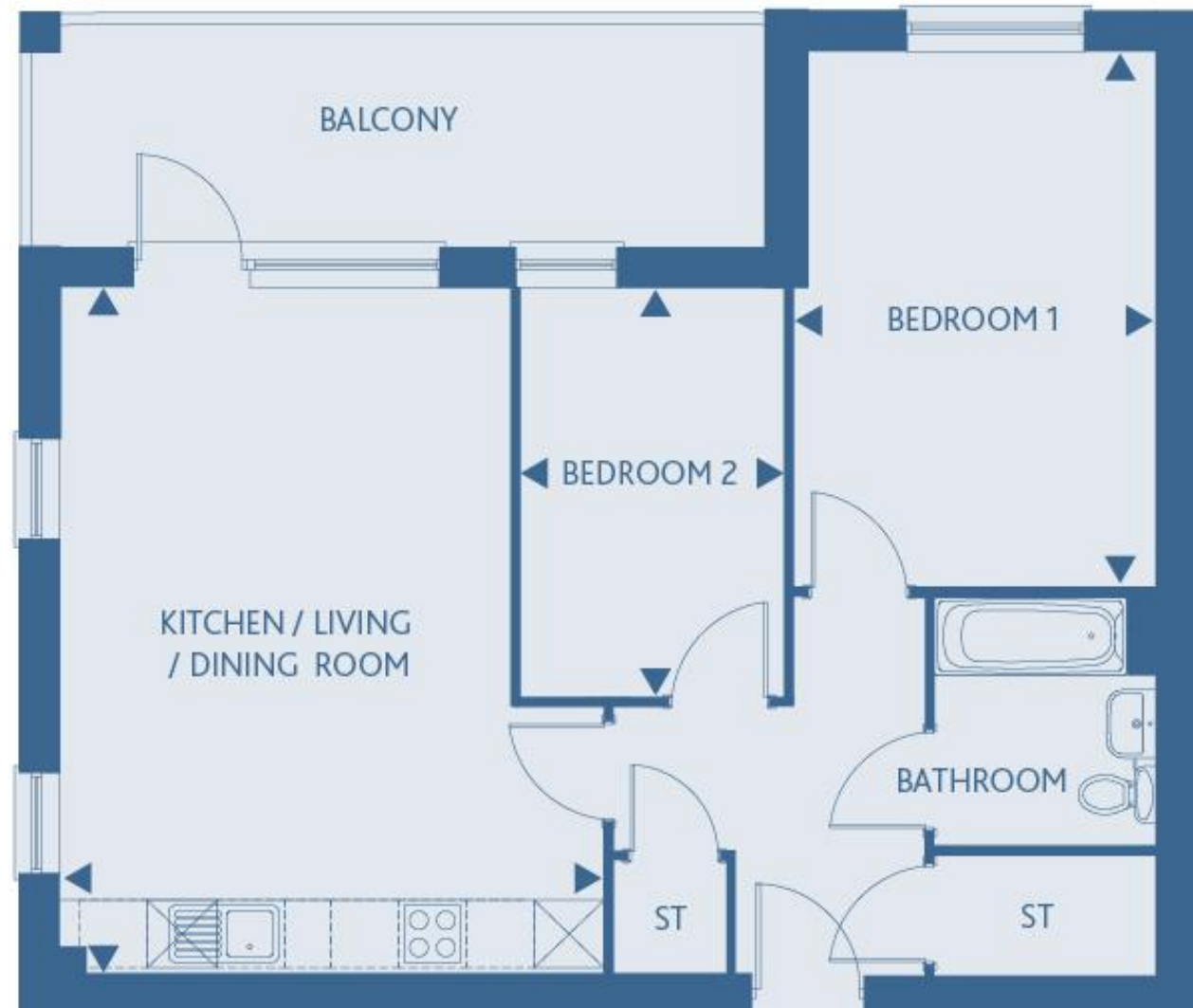
20'0" x 15'10" 6.10m x 4.85m

BEDROOM 1

15'7" x 10'3" 4.77m x 3.14m

BEDROOM 2

11'11" x 7'8" 3.65m x 2.36m



These particulars do not constitute any part of an offer or contract. Any intended purchasers must satisfy themselves as to the correctness of each of the statements contained in these particulars. All floor layouts may be subject to changes. The dimensions given on the plan are subject to minor variations intended for guidance only and are not to be used for carpets, appliances or items of furniture.



SITE PLAN

Key:



Rented properties



EV Charge Points

These particulars do not constitute any part of an offer or contract. Any intended purchasers must satisfy themselves as to the correctness of each of the statements contained in these particulars. All floor layouts may be subject to changes. The dimensions given on the plan are subject to minor variations intended for guidance only and are not to be used for carpets, appliances or items of furniture.





For more information

0300 303 8046

www.paradigmliving.co.uk

These particulars do not constitute any part of an offer or contract. Any intended purchasers must satisfy themselves as to the correctness of each of the statements contained in these particulars. All floor layouts maybe subject to changes. The dimensions given on the plan are subject to minor variations intended for guidance only and are not be used for carpets, appliances or items of furniture.

