



**49 MUSTARD WAY
TROWSE**



KEY FEATURES

- Shares from 30%
- 2 Bedrooms
- Carpets Included
- Option to Staircase to 100%

SHARED OWNERSHIP

DISCOVER YOUR NEW HOME

49 Mustard Way is a 2 bedroom end of terrace house on the popular Norfolk Homes development in Trowse. This home has 2 bedrooms, kitchen/diner, separate lounge, family bathroom, two parking spaces and private garden. Carpets are included throughout. Initial shares start from 30% - 75% with the option to 100% staircase in the future.



01603 750150

Monday - Friday



sales@broadlandgroup.org

SHARE EXAMPLE

Full Market Value

£300,000

Service Charge

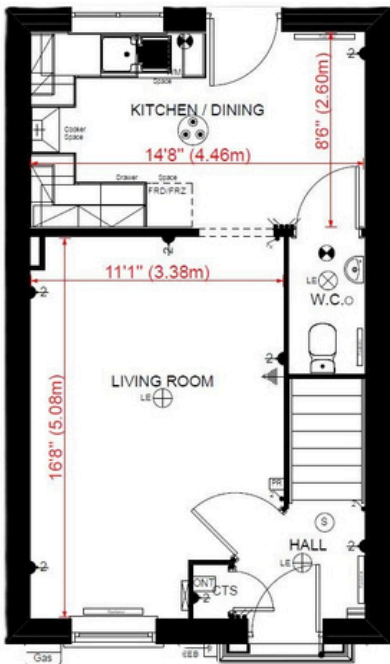
£31.98pm (25/26 estimate)

Includes buildings insurance
and estate charge

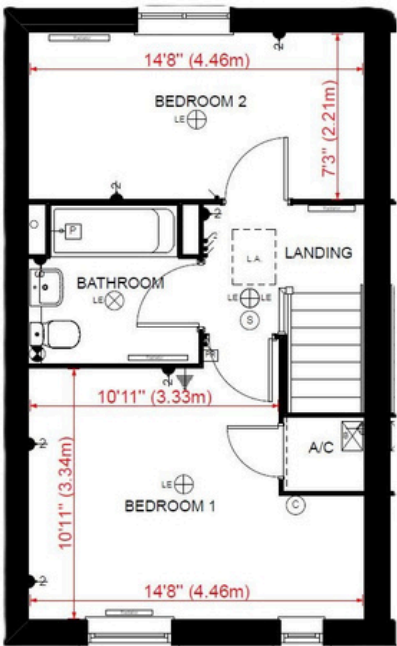
Share	Rent
30% £90,000	£481.25pm
40% £120,000	£412.50pm
50% £150,000	£343.75pm
75% £225,000	£171.88pm

FLOOR PLAN

Ground Floor



First Floor



Total Area
85m2 /
914sq ft

All measurements are approximate and should be used as a guide only. It is recommended that buyers take their own measurements for the purposes of ordering furniture, blinds or flooring.



01603 750150

Monday - Friday



sales@broadlandgroup.org