

Heritage Green II **The Shillingford**

4 bedroom mid/end terraced




Computer generated image for illustration purposes only. Finishes and materials used may be subject to change.



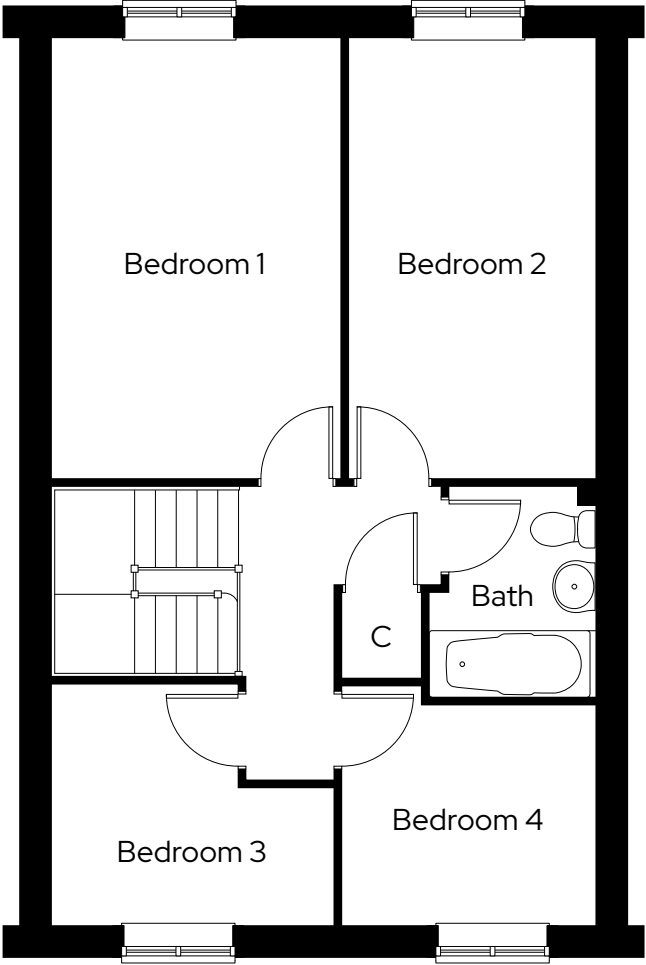
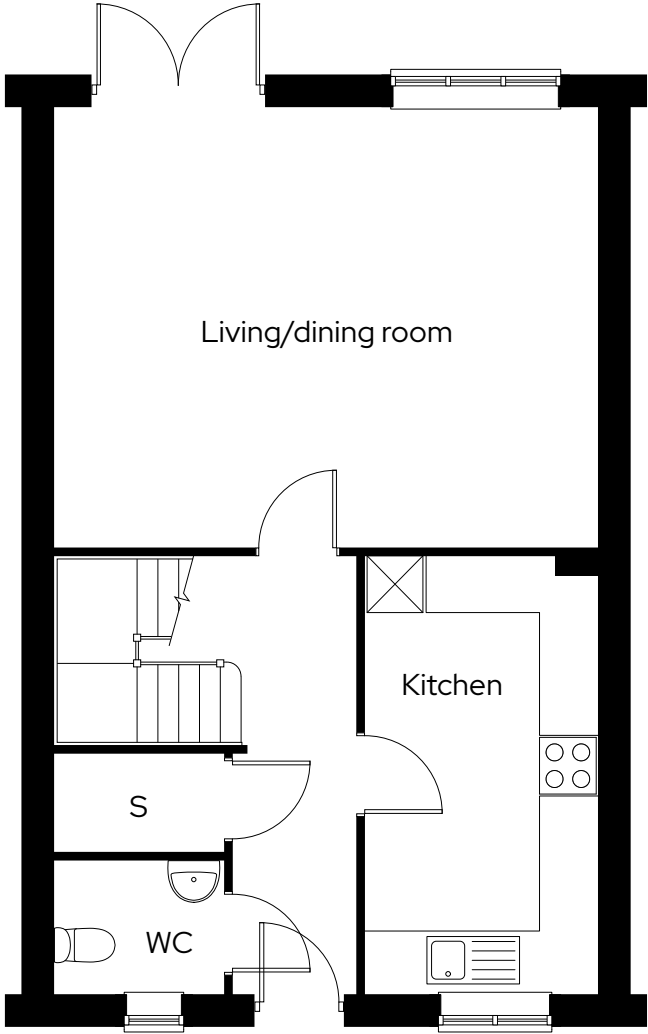
Heritage Green II

The Shillingford

4 bedroom mid terraced
Plot 143, 144*

4  1  2 

| Room | |
|--------------------|---------------------|
| Kitchen | 2.5m x 4.7m |
| Living/dining room | 5.8m x 4.7m |
| Bedroom 1 | 3.1m x 4.7m |
| Bedroom 2 | 2.7m x 4.7m |
| Bedroom 3 | 3.0m x 2.6m |
| Bedroom 4 | 2.7m x 2.4m |
| Total area | 109.1m ² |






* Mirrored plot C Cylinder S Storage

Floor plan for illustration purposes only and not to scale. Dimensions are maximum and for general guidance, not suitable for furniture, appliances, or carpet sizing.

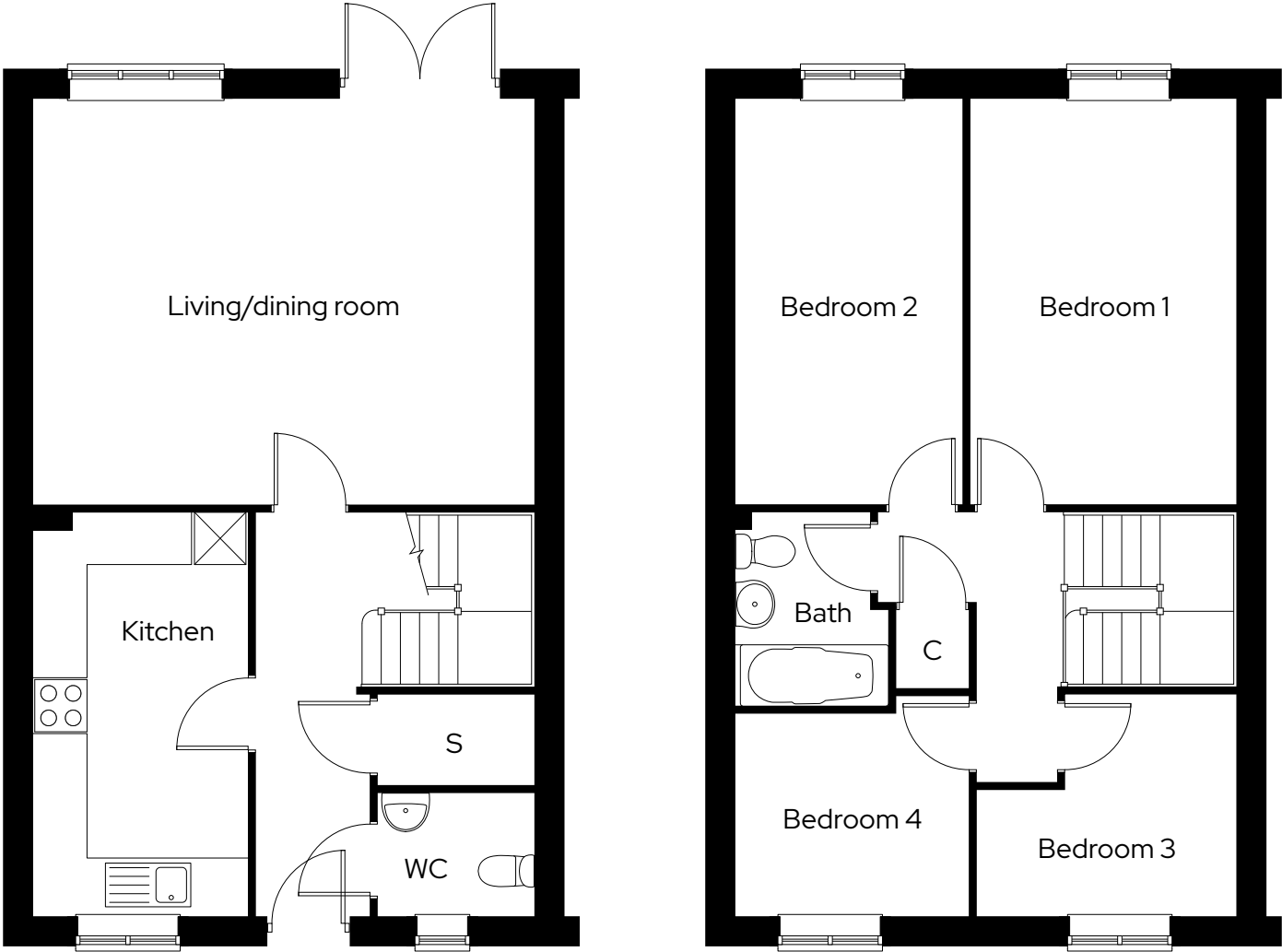
Heritage Green II

The Shillingford

4 bedroom end terraced
Plot 145

4  1  2 

| Room | |
|--------------------|---------------------|
| Kitchen | 2.5m x 4.7m |
| Living/dining room | 5.8m x 4.7m |
| Bedroom 1 | 3.1m x 4.7m |
| Bedroom 2 | 2.7m x 4.7m |
| Bedroom 3 | 3.0m x 2.6m |
| Bedroom 4 | 2.7m x 2.4m |
| Total area | 109.1m ² |



C Cylinder S Storage

Floor plan for illustration purposes only and not to scale. Dimensions are maximum and for general guidance, not suitable for furniture, appliances, or carpet sizing.

Heritage Green II

Site plan

North



 **The Shillingford**
4 bedroom mid/end terraced

 **Parking spaces**

 **Visitor parking**

Site layout and landscaping is indicative only and subject to change. Please note the rear garden for Plot 143 is sloped. Speak to a Sales Consultant for further information.

