



Flat 3, 8 Beeching Way

Wallingford, OX10 0TG

50% Shared Ownership £112,500

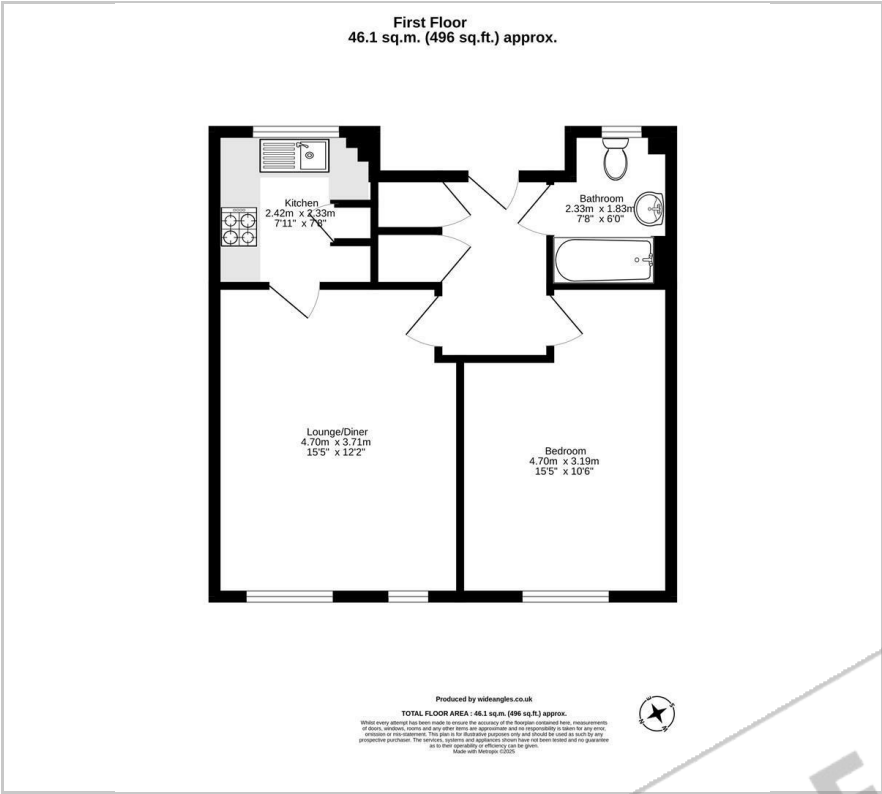
A wonderful opportunity to purchase this well presented, modern One-Bedroom First Floor Apartment with spacious and carefully considered layout. Offering entrance hall with two storage cupboards, bathroom, living area with separate kitchen and double bedroom. Externally, there is allocated parking.

The apartment benefits from being located less than 10 minutes walk away from the town centre of Wallingford, a historic market town on the River Thames offering a wide range of amenities including a wide range of eating establishments and shopping facilities.

- Full Open Market Price £225,000
- Estimated Monthly Rent £310.02
- Estimated Monthly Service Charge £41.49
- Estimated Monthly Sinking Fund £39.30
- Modern & Spacious First Floor Apartment
- Living Area with Separate Kitchen
- Great Size Double Bedroom
- Allocated Parking
- Less Than 10 Minutes Walk Away From Wallingford Town Centre.



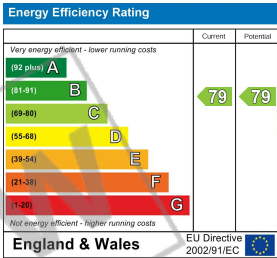
Floor Plan



Area Map



Energy Efficiency Graph



These particulars, whilst believed to be accurate are set out as a general outline only for guidance and do not constitute any part of an offer or contract. Intending purchasers should not rely on them as statements of representation of fact, but must satisfy themselves by inspection or otherwise as to their accuracy. No person in this firm's employment has the authority to make or give any representation or warranty in respect of the property.