

# Welcome to Partridge Walk

Stafford, Staffordshire, ST16 1ZW

A collection of two and three  
bedroom Shared Ownership homes.



[bromfordhomes.co.uk/partridgewalk](https://bromfordhomes.co.uk/partridgewalk)

## On your doorstep

Built by 5\* builders Bovis Homes, our brand new 2 and 3 bedroom, Shared Ownership homes at Partridge Walk are sure to be very popular. Located perfectly for both work and play, this stunning new development has something for everyone, and will appeal to first-time buyers, couples, and growing families.



**Stafford  
town centre**  
2.2 miles



**M6  
junction 15**  
1 mile



**Stafford train  
station**  
2.5 miles

Distances taken from Google Maps via walking or driving at date of publishing.

### Local area connection

To meet the needs of local people most of our homes for sale require a local connection to the area. The connection criteria varies between sites, but generally it's based on:

- Being a resident (or employed within) the area for a number of years (usually between 2 to 5)
- Family connections – for example, parent, grandparent, child, grandchild or adult sibling – who have lived in the area for at least three years

**Priority will be given to applicants who have a  
connection to Stafford Borough Council**

If you need any more information, please speak to one of our helpful Sales Consultants.

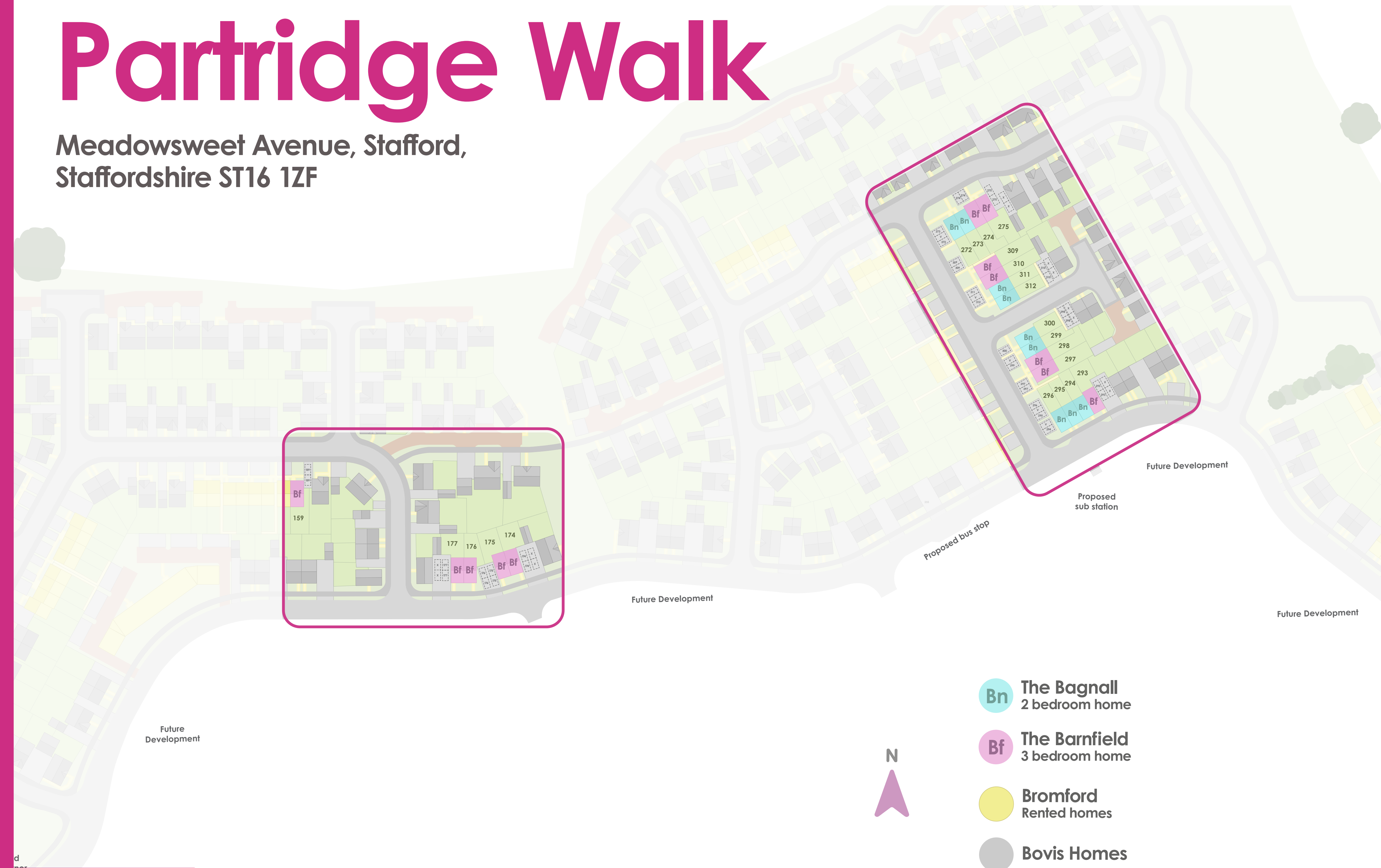
We follow Homes England Guidelines on First Come, First Served policies for Shared Ownership homes. Please visit [our policies page](#) for full policy details

**Bromford.**  
**Shared Ownership**



# Partridge Walk

Meadowsweet Avenue, Stafford,  
Staffordshire ST16 1ZF



**Bn** The Bagnall  
2 bedroom home

**Bf** The Barnfield  
3 bedroom home

**Bromford**  
Rented homes

**Bovis Homes**

Scan with what3words

///otter.tricycle.spot

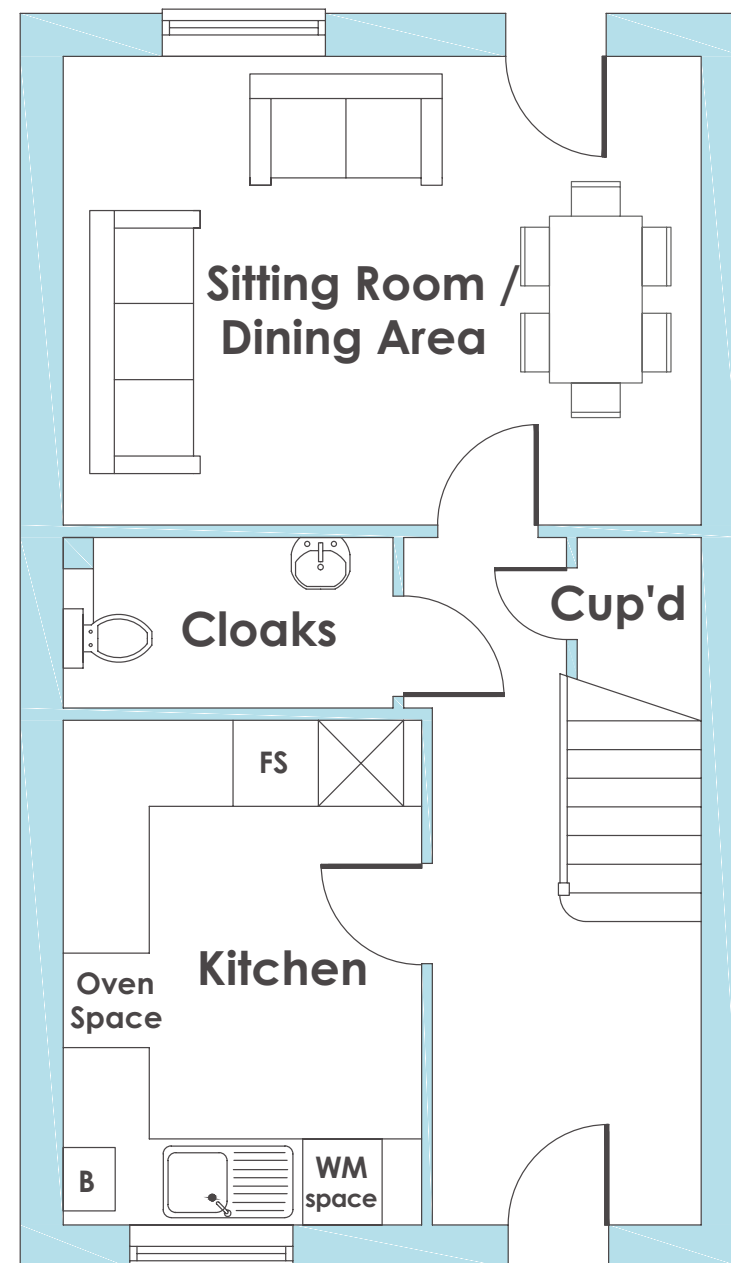
Artist's impression drawn from architect's plans to show the relative position of individual properties. NOT TO SCALE. This is a two dimensional drawing and will not show land contours and gradients, boundary treatments, landscaping or local authority street lighting. Please contact our sales team for more information.



Plots: 272, 273, 294, 295, 296, 299, 300, 311 and 312

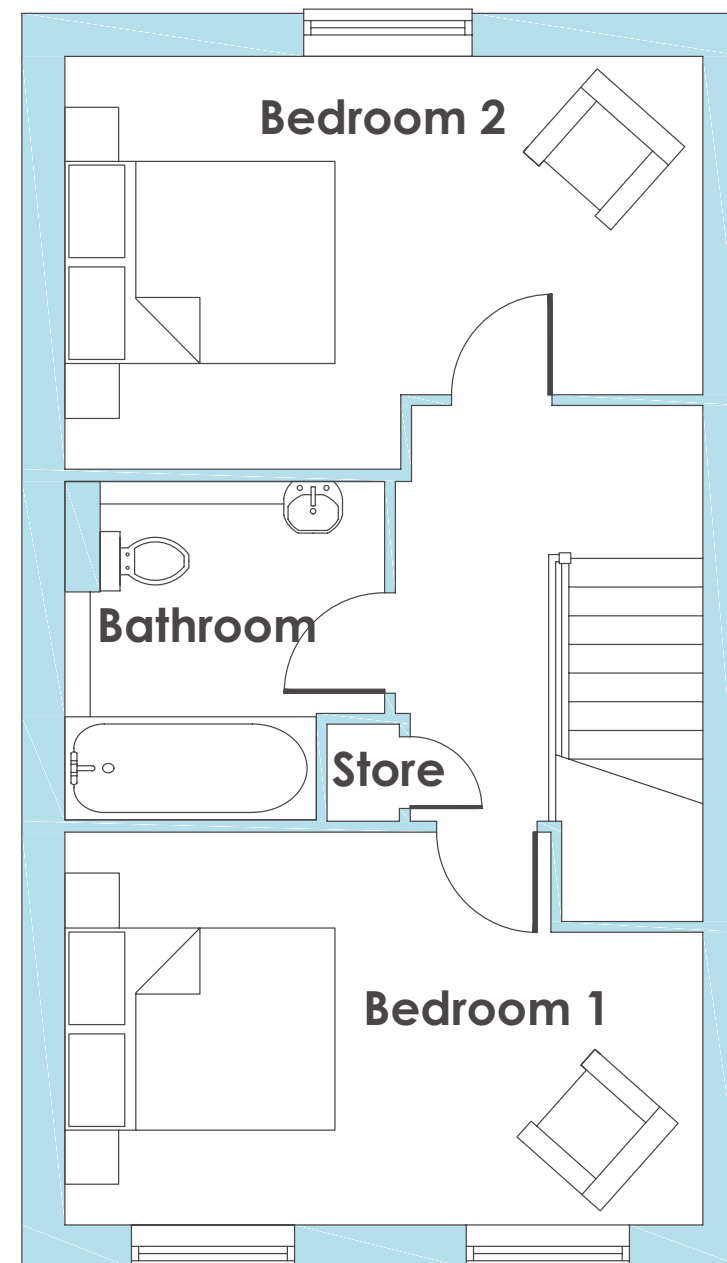
# The Bagnall

## 2 bedroom home



### Ground floor

- Sitting Room / Dining Area**  
4.45m x 3.27m / 14'7" x 10'9"
- Kitchen**  
3.49m x 2.47m / 11'5" x 8'1"



### First floor

- Bedroom 1**  
4.45m x 2.74m / 14'7" x 9'0"
- Bedroom 2**  
4.45m x 2.89m / 14'7" x 9'6"



2 bedrooms



Energy  
efficient



Turf to rear  
garden



10 Year NHBC  
warranty



- Fitted kitchen with built in appliances
- Open plan living room with dining area
- Guest cloakroom
- Under-stairs storage
- Allocated parking spaces
- Turfed rear garden



Plots: 159, 174, 175, 176, 177, 274, 275, 297 and 298

# The Barnfield

## 3 bedroom home



### Ground floor

**Sitting / dining room**  
4.63m x 4.57m / 15'2" x 15'0"

**Kitchen**  
2.94m x 2.52m / 9'8" x 8'3"

### First floor

**Bedroom 1**  
4.57m x 2.45m / 15'0" x 8'1"

**Bedroom 2**  
4.26m x 2.22m / 14'0" x 7'3"

**Bedroom 3**  
3.15m x 2.27m / 10'4" x 7'5"



3 bedrooms



Energy  
efficient



Turf to rear  
garden



10 Year NHBC  
warranty



- Full gas fired central heating
- Double glazing and high performance insulation throughout
- Allocated parking spaces
- Turfed rear gardens
- 10 years new home warranty





## Who are we?

Since 1963 we have been providing customers with new and affordable homes. We want all of our customers to thrive and believe that with the right homes and someone who believes in their potential, almost anything is possible - with Bromford Shared Ownership we're helping more people than ever before to realise their dreams of owning their home.

Where does my money go when I buy a Bromford home? As a registered charity through the FCA registered societies, all the money Bromford makes goes back into the communities we work in and helps the people we work with thrive for a better safer life.



Shannon Way,  
Ashchurch,  
Tewkesbury,  
GL20 8ND

0800 0852 499  
[sales@bromford.co.uk](mailto:sales@bromford.co.uk)  
[bromfordhomes.co.uk](http://bromfordhomes.co.uk)



Bromford abides by the Consumer Protection from  
Unfair Trading Regulations 2008

**Bromford.**  
Shared Ownership