

10 Oakfield, Mill End, Hertfordshire, WD3 8LP

3 bedroom house for
Shared Ownership from
£174,000 for a 30%
share

Property overview This newly refurbished 3-bedroom house is situated in rural Mill End, and boasts 3 bedrooms, one bathroom, a downstairs WC, a spacious living area, a separate kitchen with integrated appliances, a separate dining room, and a spacious private garden. Situated just a 7-minute drive from Rickmansworth Station, residents are connected to London Marylebone Station in just 30 minutes.



Specification

- 990 year lease
- Council Tax Band C
- White internal doors
- Walls in Dulux white matt emulsion
- Minoli Foster Light tiling to kitchen
- Amtico Spacia flooring to kitchen, dining and living room
- Fitted carpets to bedrooms
- Howdens Dove Grey kitchen
- Fridge/freezer, washing machine and oven
- Stainless steel splash back
- Stainless steel bowl sink
- Roca bathroom and WC suite
- Glass shower screen & thermostatic mixer tap
- Heated towel rail
- Service charge inclusive of building insurance

Features include:



3 bedroom
house



Off-street
parking



Located in
Three Rivers



Under
renovation

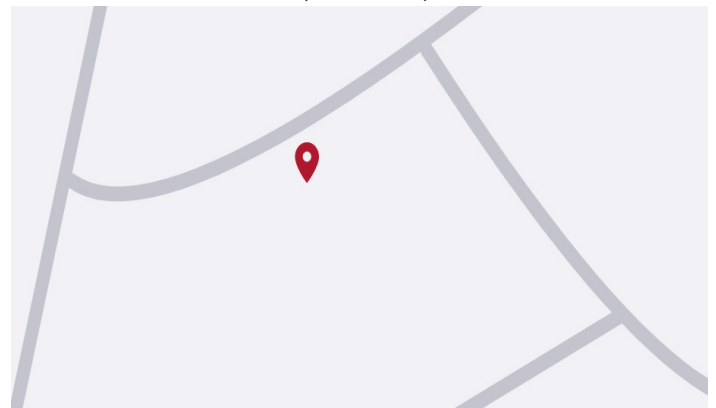


7 minutes' drive to
Rickmasworth Station



Kitchen with
integrated appliances

Location 10 Oakfield, Mill End, WD3 8LP



Call: 020 7539 3745 **Email:** thrive@redloft.co.uk
Visit: redloftproperty.co.uk/thrive

Disclaimer: We have made every effort to accurately describe the property in this brochure. However, prospective buyers should treat these details as a general guide, not as definitive representations or facts. All properties sold as seen.

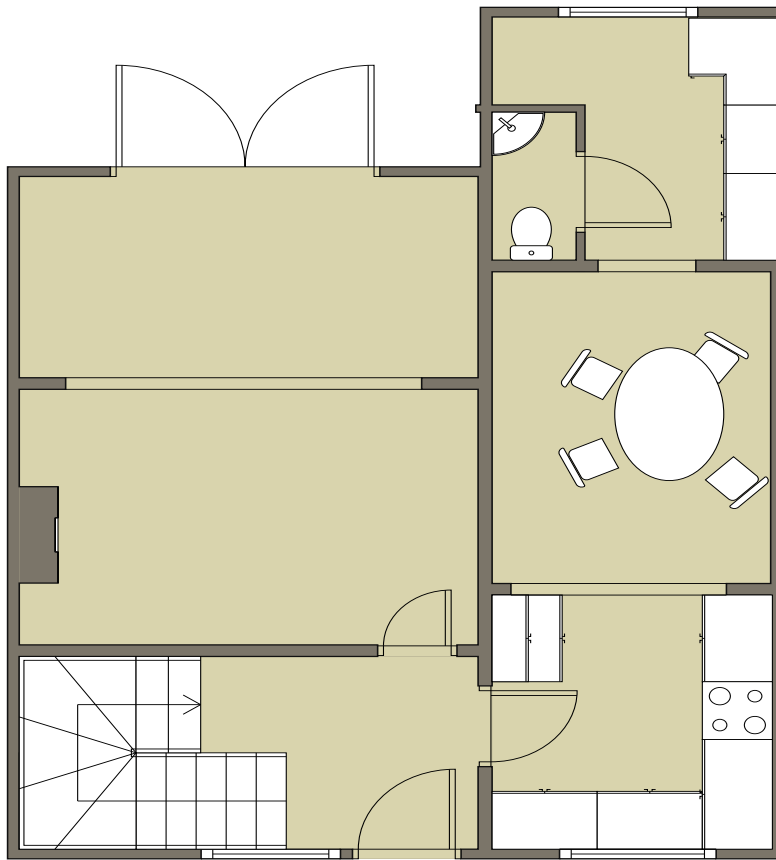
Thrive

SELLING

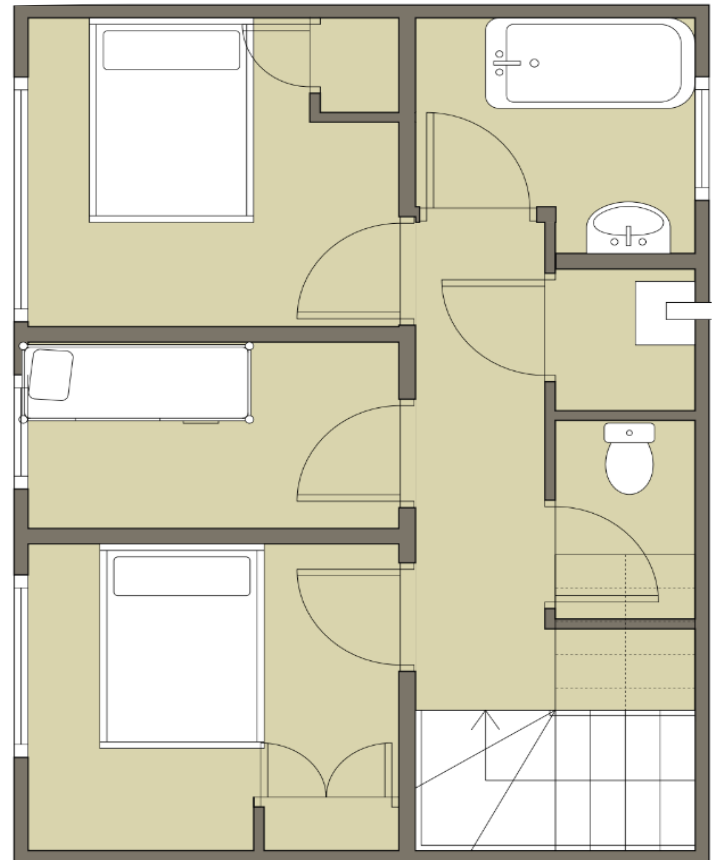
redloft

10 Oakfield, Mill End, Hertfordshire, WD3 8LP

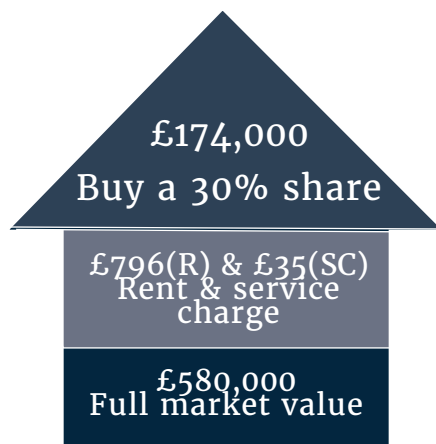
Floor Plan



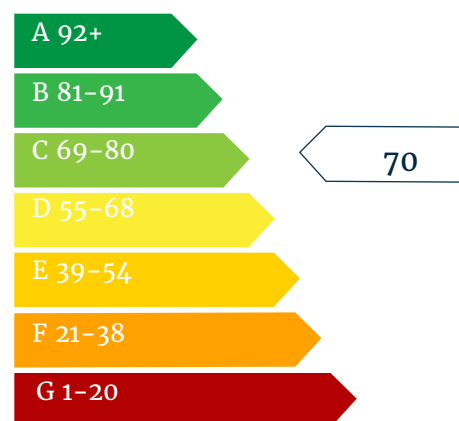
Shared Ownership Example



Energy Performance Certificate



Rent & service charges are monthly.
Rent charged at 2.75% on unsold
share.



Call: 020 7539 3745 Email: thrive@redloft.co.uk

Visit: redloftproperty.co.uk/thrive

Disclaimer: The floor plans are for reference only and are not to scale. Dimensions and layouts are approximate. Prospective buyers should independently verify all details. All properties sold as seen.

Thrive

SELLING

redloft