



100 Diamond Drive

Didcot, OX11 6HR

40% Shared Ownership £126,000

Immaculately presented two-bedroom terraced house with off-road parking, conveniently located in Great Western Park.

100 Diamond Drive offers a spacious and conveniently placed home, featuring two bedrooms, a modern family bathroom, and a bright, welcoming hallway. The property includes a well-appointed kitchen and a bright & inviting sitting room at the rear, seamlessly opening onto a well maintained, fully enclosed garden with rear access. Additional benefits include double-glazed windows, gas central heating and a downstairs cloakroom.

Situated within Great Western Park, one of Didcot's newest and most sought-after developments, Diamond Drive boasts excellent amenities. These include a primary and secondary school, a supermarket, Costa Coffee, a pub and restaurant, and the impressive Boundary Park with sports and recreation facilities. The location offers easy access to the A34, and a convenient shuttle bus service connects residents to Didcot train station and town centre.

- Full Market Price £310,000
- Shares Available 40% - 100%
- Current Monthly Rent £473.73
- Current Monthly Service Charge £26.35
- Lease Term Remaining 119 Years
- Two Bedroom Mid Terrace Home
- Downstairs Cloakroom
- Gas Central Heating
- Allocated Off Street Parking
- Fully Enclosed Rear Garden with Rear Access 11.7 x 5m



2



1

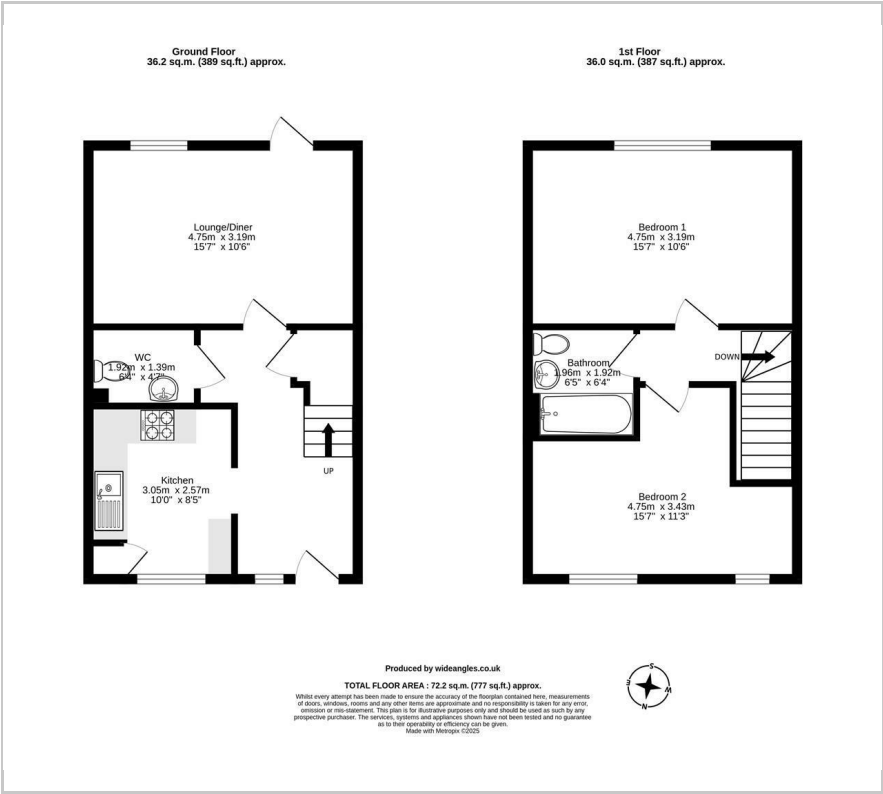


1



B

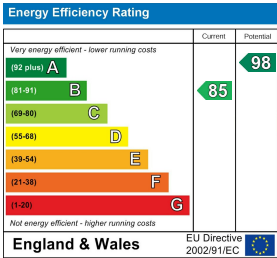
Floor Plan



Area Map



Energy Efficiency Graph



These particulars, whilst believed to be accurate are set out as a general outline only for guidance and do not constitute any part of an offer or contract. Intending purchasers should not rely on them as statements of representation of fact, but must satisfy themselves by inspection or otherwise as to their accuracy. No person in this firms employment has the authority to make or give any representation or warranty in respect of the property.