

Prices  
*from*  
**£68,125**

# Bishops Green

GUARDSMAN COURT, MCDOWELL STREET, BISHOPS STORTFORD, HERTFORDSHIRE

A brand-new development of 1 & 2 bed apartments

**////** ParadigmLiving

£ Prices from **£68,125 (25% share)**

% Share available **25%-75%**

🛏 1 & 2 bed apartments

Paradigm is delighted to present a collection of 9 brand-new homes available to purchase through the Shared Ownership Scheme.

These thoughtfully designed 1 and 2-bedroom apartments are nestled in a charming countryside setting, offering a perfect blend of rural tranquillity and modern convenience.

Located just a short drive from the vibrant market town of **Bishop's Stortford**, residents will enjoy access to a wide range of amenities including shops, supermarkets, pubs, and restaurants. The town also boasts excellent transport links, with a direct rail service to **London in under an hour**—ideal for commuters and city explorers alike.

Whether you're a first-time buyer or looking to downsize, these homes offer an exceptional opportunity to step onto the property ladder in a desirable location.



## KEY FEATURES

White bathroom suite with thermostatic shower

Carpet throughout living areas

Vinyl flooring in kitchen & bathroom

Gas central heating

Allocated parking

Fitted kitchen with integrated oven and hob, washer dryer, fridge freezer & dishwasher

These particulars do not constitute any part of an offer or contract. Any intended purchasers must satisfy themselves as to the correctness of each of the statements contained in these particulars. All floor layouts may be subject to changes. The dimensions given on the plan are subject to minor variations intended for guidance only and are not to be used for carpets, appliances or items of furniture.

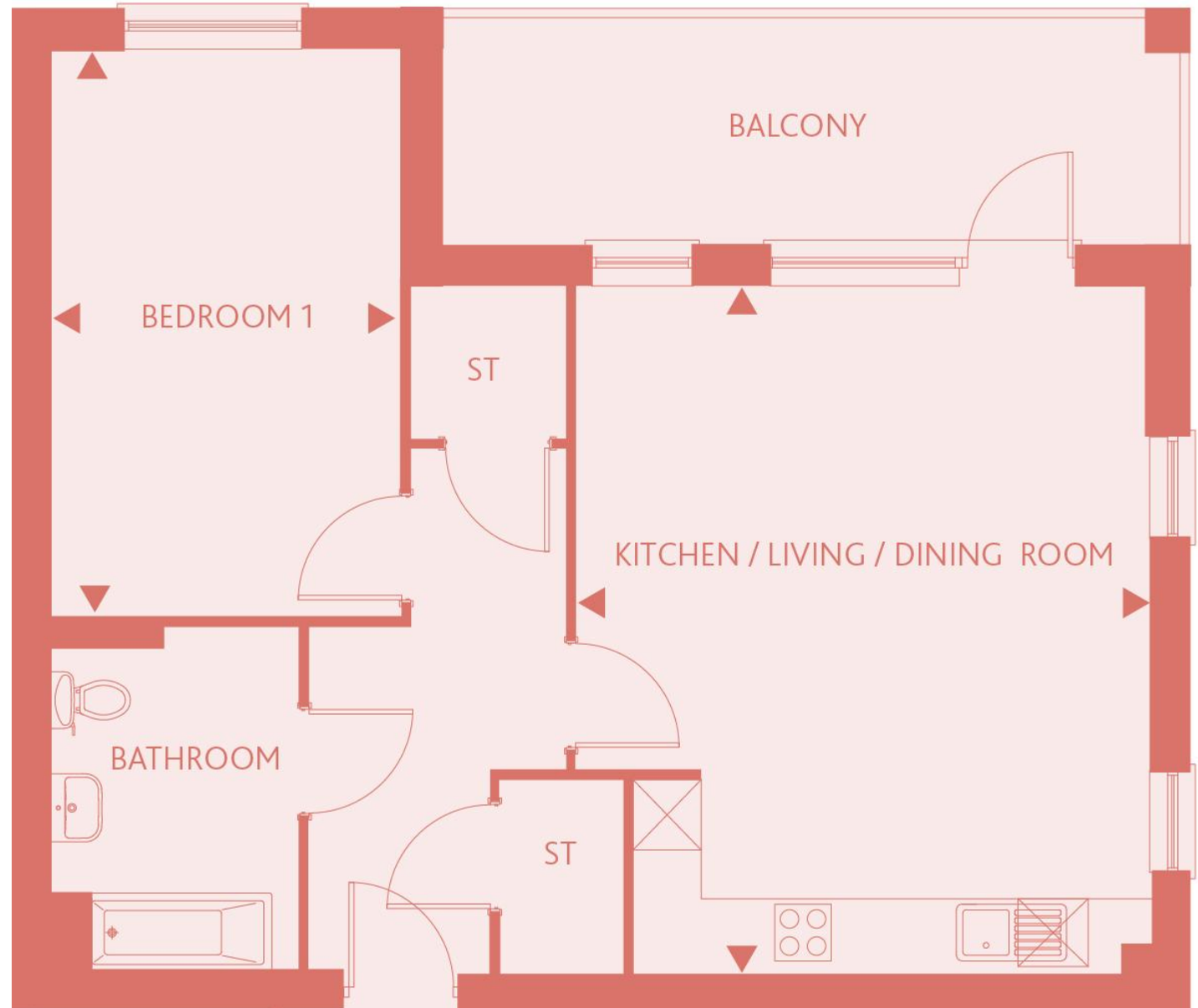


## 1 Bedroom Apartment

Plots 73, 76 & 79

**KITCHEN/LIVING/DINING ROOM**  
20'0" x 16'8" 6.10m x 5.10m

**BEDROOM 1**  
16'6" x 10'3" 5.05m x 3.14m



These particulars do not constitute any part of an offer or contract. Any intended purchasers must satisfy themselves as to the correctness of each of the statements contained in these particulars. All floor layouts maybe subject to changes. The dimensions given on the plan are subject to minor variations intended for guidance only and are not be used for carpets, appliances or items of furniture.





## 1 Bedroom Apartment

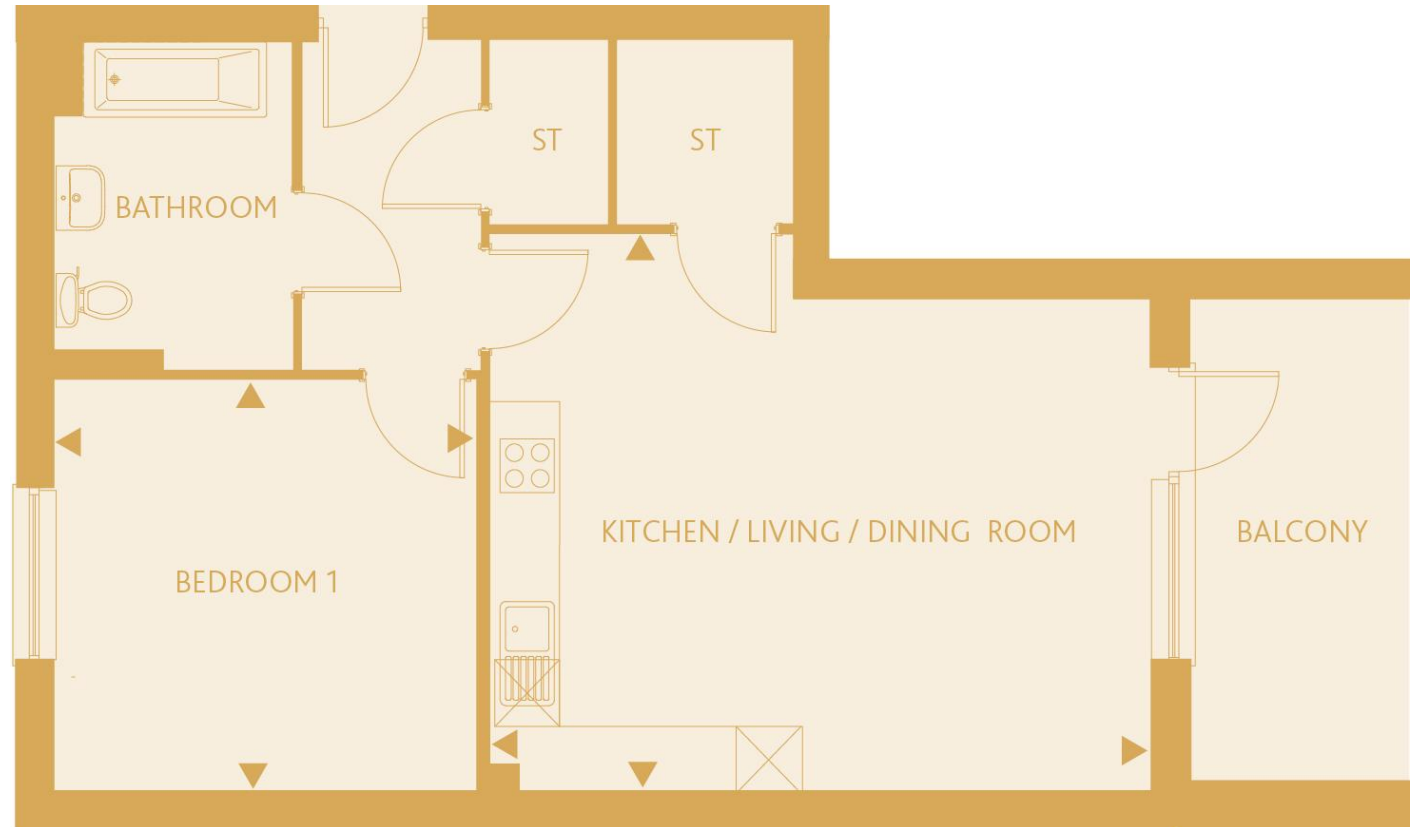
Plots 74, 77 & 80

### KITCHEN/LIVING ROOM

17'1" x 20'3" 5.21m x 6.18m

### BEDROOM 1

12'7" x 12'11" 3.86m x 3.94m



\*Note: The boiler is in the bathroom for Plot 74, all remaining plots are in the kitchen

These particulars do not constitute any part of an offer or contract. Any intended purchasers must satisfy themselves as to the correctness of each of the statements contained in these particulars. All floor layouts may be subject to changes. The dimensions given on the plan are subject to minor variations intended for guidance only and are not be used for carpets, appliances or items of furniture.





## 2 Bedroom Apartment

Plots 72, 75 & 78

### KITCHEN/LIVING ROOM

20'0" x 15'10" 6.10m x 4.85m

### BEDROOM 1

15'7" x 10'3" 4.77m x 3.14m

### BEDROOM 2

11'11" x 7'8" 3.65m x 2.36m



These particulars do not constitute any part of an offer or contract. Any intended purchasers must satisfy themselves as to the correctness of each of the statements contained in these particulars. All floor layouts may be subject to changes. The dimensions given on the plan are subject to minor variations intended for guidance only and are not to be used for carpets, appliances or items of furniture.





# SITE PLAN

Key:



Rented properties



EV Charge Points

These particulars do not constitute any part of an offer or contract. Any intended purchasers must satisfy themselves as to the correctness of each of the statements contained in these particulars. All floor layouts may be subject to changes. The dimensions given on the plan are subject to minor variations intended for guidance only and are not to be used for carpets, appliances or items of furniture.





For more information

0300 303 8046

[www.paradigmliving.co.uk](http://www.paradigmliving.co.uk)

These particulars do not constitute any part of an offer or contract. Any intended purchasers must satisfy themselves as to the correctness of each of the statements contained in these particulars. All floor layouts maybe subject to changes. The dimensions given on the plan are subject to minor variations intended for guidance only and are not be used for carpets, appliances or items of furniture.

